

FOREST LAW ENFORCEMENT, GOVERNANCE & TRADE PROGRAMME

TFLET
FOREST LAW ENFORCEMENT,
GOVERNANCE &
TRADE PROGRAMME

Strengthens forest law compliance and governance by improving transparency and supporting effective management practices in the trade of legally produced tropical timber.

Enhances international cooperation in forest law enforcement and governance through robust partnerships.

Builds community capacity to actively promote and implement the principles of sustainable forest management (SFM).

**ENHANCING
CAPACITY &
STRENGTHENING
EFFECTIVE
GOVERNANCE
IN TROPICAL
FOREST
COUNTRIES.**

*A log yard in Northern Congo.
Photo: Monica Börner*



WHY IS FOREST LAW ENFORCEMENT, GOVERNANCE & TRADE NEEDED?

ITTO'S WORK IMPROVES FOREST GOVERNANCE ALONG THE ENTIRE VALUE CHAIN FROM LOCAL COMMUNITIES & INDUSTRIES, TO NATIONAL GOVERNMENTS & INTERNATIONAL CONSUMERS BY PROMOTING LEADERSHIP & ENHANCING TRANSPARENCY.



Local transport on the Dzanga River, Republic of Congo.
Photo: Intu Boedhiharto

PROGRAMME OVERVIEW

ITTO's Forest Law Enforcement, Governance and Trade (TFLET) Programme supports member countries in responding to illegal timber production by enhancing processes and policies that uphold forest law compliance and strengthening governance within the tropical forestry sector. Through an inclusive and participatory approach, ITTO facilitates cooperation along the entire value chain helping to improve transparency, build capacity and create strong public-private partnerships to prevent illegal logging and encourage sustainable forest management.

Supported by a streamlined and effective funding process, forest communities, civil society organisations, government agencies, donors and the private sector are invited to submit project proposals that are aligned with the goals of the TFLET Programme. Proposals are then assessed and prioritized to determine those that will create dynamic partnerships among stakeholders.

Studies by organisations such as the World Bank show that tropical countries have lost billions of dollars in potential revenue due to illegal logging and associated trade.¹ Not only do such activities contribute to deforestation and environmental degradation, but they also undermine social and economic development within forest communities and disrupt efforts to reduce poverty. As a result, countries lose the benefits that forests provide such as food, income and employment.

A number of factors contribute to the prevalence of illegal logging. These include poor forest governance and enforcement capacity, policy and legal frameworks that fail to promote sustainable trade, and insufficient data about forest resources and illegal operations.

CASE STUDY: REPUBLIC OF CONGO

With roughly 60% of its territory covered in forest, the Republic of Congo has a significant timber export trade that provides a vital source of income to many forest-based communities. One of the challenges facing the country is a lack of data regarding forest companies and harvesting areas, which impedes the government's ability to enforce forest law and stop illegal logging. Not only does this result in negative environmental impacts, but a lack of information also creates challenges for timber producers who are increasingly required by the international market to demonstrate that the source of their timber is legal and sustainable.

In response to this challenge, ITTO, in collaboration with the World Resources Institute (WRI) and the Congolese Ministry of Forest Economy, helped establish a system for collecting accurate geographic data on forests and developed stakeholders' capacity to use this information to improve forest law enforcement. The system identified forest concessions engaged in illegal logging practices and provided the Republic of Congo with powerful tools and qualified technical personnel trained to oversee the country's forest operations. Ultimately, the project contributed to improved sustainable forest management (SFM) and encouraged the systematic application of forest law.

¹ Marilyne Pereira Goncalves et al., *Justice for Forests*, World Bank series; R67.

TFLET'S PROJECTS & ACTIVITIES FOCUS ON

4

KEY AREAS

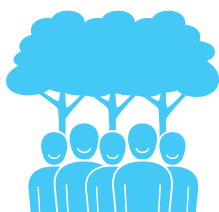
- 1) **Improving Forest Law Compliance and Governance.**
 - Enhance national policy and legal frameworks to create more effective enforcement mechanisms and strengthen cooperation among stakeholders.
- 2) **Increasing Trade in Legally Produced Tropical Timber.**
 - Foster greater transparency and more effective management of supply chains.
 - Improve production through industry training programs and marketing workshops for community-based enterprises.
- 3) **Enhancing Sustainable Livelihoods Through Sustainable Forest Management.**
 - Strengthen the capacity of small and medium-sized community enterprises (SMFEs) to develop forest certification and use their forests sustainably.
- 4) **Strengthening International Cooperation.**
 - Increase international and regional cooperation in forest law enforcement and governance to mitigate forest degradation and enhance economic opportunities for community enterprises.



Timber tracking in Guyana. Photo: Pradeepa Bholanath

THE FOREST LAW ENFORCEMENT, GOVERNANCE AND TRADE (TFLET) PROGRAMME DELIVERS BENEFITS FOR:

FOREST DEPENDENT COMMUNITIES



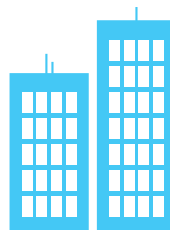
IMPACT: Enhances skills in SFM and increases transparency resulting in poverty reduction and a more equal distribution of forest benefits.

GOVERNMENT & THE PUBLIC SECTOR



IMPACT: Improves opportunities for sustainable employment and income and supports informed decision-making contributing to more effective policy and legal frameworks.

THE PRIVATE SECTOR



IMPACT: Enhances competitiveness of legally produced tropical timber through improved supply chain management, and market information and knowledge.

THE ENVIRONMENT



IMPACT: Decreases carbon dioxide emissions through reduced deforestation and degradation, helps protect habitats and species, and improves biodiversity and water conservation.

WHAT WE CAN **ACHIEVE**

The Forest Law Enforcement, Governance and Trade (TFLET) Programme presents a vitally important opportunity to assist tropical countries in developing and implementing local, regional, sub-national and national forest management policies that encourage effective leadership, improve accountability and reduce illegal logging.

Increasingly, tropical timber markets are demanding greater transparency on the legality and sustainability of forest products to provide assurance for buyers and consumers. While this is a positive step, it can be challenging for small and medium-sized forest enterprises (SFMEs) to meet market requirements and successfully access these growing opportunities. The TFLET Programme develops strategies to enhance the capacity of communities and SFMEs to sustainably manage timber-producing forests and strengthens cooperation along the entire value chain, helping to ensure a legal and sustainable tropical timber trade from source to consumer.

*Forest of central San Luis.
Photo: A. Bellusi & N. Kingman*

International Tropical Timber Organization (ITTO)

International Organizations Centre, 5F
Pacifico-Yokohama 1-1-1 Minato-Mirai,
Nishi-ku Yokohama, 220-0012 Japan

T +81-45-223-1110
F +81-45-223-1111
E itto@itto.int



PARTNER WITH US

To successfully deliver the Forest Law Enforcement, Governance and Trade (TFLET) Programme over the next three years, ITTO requires an additional US\$5.75 million per year. This will result in significant improvements in national forest law enforcement and governance in Africa, Asia and Latin America by enhancing and diversifying international trade in tropical timber from sustainably managed forests.

The TFLET Programme is just one of ITTO's key areas of work and we need your support to deliver it successfully. Download our Strategic Action Plan for 2013-2018 at www.itto.int/publicity_materials, which outlines ITTO's programmes of work and opportunities for donor support. For more information please contact tp@itto.int.

By partnering together, we can help sustain the world's tropical forests. Our work over the last 30 years has reduced illegal logging, delivered improved governance systems and created more resilient livelihoods but there is still much to achieve. To learn more about ITTO, the Forest Law Enforcement, Governance and Trade Programme and how to support our projects, visit us at www.itto.int.

WHY ITTO TO IMPROVE FOREST LAW AND GOVERNANCE?

ITTO has a long-standing track record of successfully implementing projects and capacity building activities that have delivered significant gains for forest law enforcement and governance.

As a shared global forum for tropical timber producers and consumers, we are unparalleled in our ability to increase political awareness on the importance of tackling illegal logging and illegal timber trade among our members. We facilitate discussion on the need to put law enforcement policies into practice and lessons learned in effective governance. This places ITTO in a strong position to deliver results through the TFLET Programme by linking improved governance with trade-related initiatives. In addition, our multilateral approach puts tropical timber producers and consumers on an equal footing to achieve the most effective outcomes for tropical forests and their stakeholders.