



ELEMENTS FOR THE BIENNIAL REVIEW AND ASSESSMENT OF THE WORLD TIMBER SITUATION 2015-2016

Frances Maplesden



Content

- Joint Forest Sector Questionnaire 2015-2016
 - Responses, data quality, developments
- Tropical wood products production and trade
 - Primary wood products
- Global market trends and drivers
 - Market risks and uncertainties



JOINT FOREST SECTOR QUESTIONNAIRE 2016





Data responses

In total, **43 out of 72** ITTO member countries returned the 2016 questionnaire, either fully or partially completed:

28 consumer countries (75%); 9 JFSQs missing

15 producer countries (42%); 20 JFSQs missing.

We have **full information** (production, trade, directions of trade, secondary trade, 2016 estimates, trade in tropical species, forest sector questionnaire) for **only 10 countries**



Data Quality

Production data is difficult to collect (% of data points)

	1990-2016	2012-2016
Questionnaire, Partner Organizations, official publications	52%	42%
Estimated	33%	15%
Repeated	15%	43%

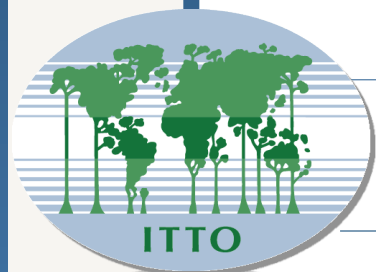
Trade data is easier to collect (% of data points)

	1990-2016	2012-2016
Questionnaire, Partner Organizations, UN COMTRADE, WTA	62%	55%
Estimated (e.g. converted from weight to m ³)	36%	34%
Repeated	2%	11%



Database developments

- ❑ Upgrade of SPWP database platform
 - ❑ More comprehensive cross-referencing and cleaning of data
 - ❑ Extended information on SPWPs
- ❑ Price trends for primary wood products; price indices
- ❑ Review of conversion factors



Conversion factors

- Standardised data is required for aggregations and comparisons
- Current conversion factors may be inaccurate given changes in technology and wood resource
- Trade data available is often not standardised and requires unit conversion (e.g. weight to volume)
- ITTO particularly requires more up-to-date country estimates of (1) weight to volume (kg/m^3) for logs, sawnwood, veneer and plywood and (2) average conversion efficiencies ($\text{m}^3 \text{RWE}/\text{m}^3$ product output) for sawnwood, veneer and plywood producers
- ITTO/FAO/UNECE questionnaire on conversion factors



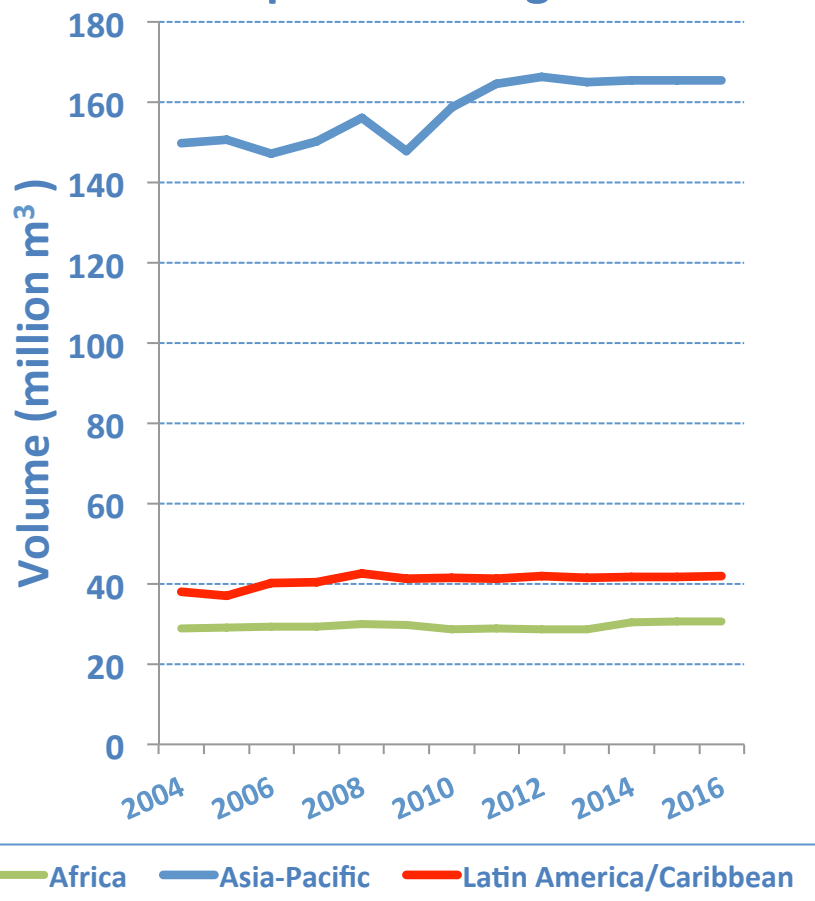
PRODUCTION AND TRADE TRENDS PRIMARY WOOD PRODUCTS



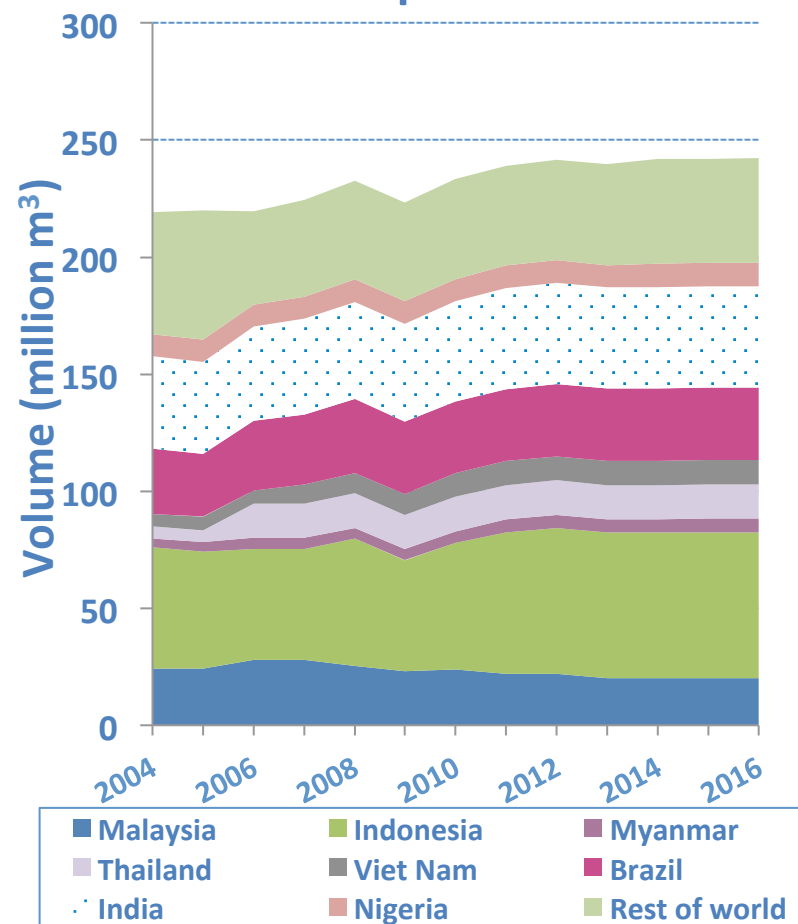


Production of tropical industrial roundwood (logs)

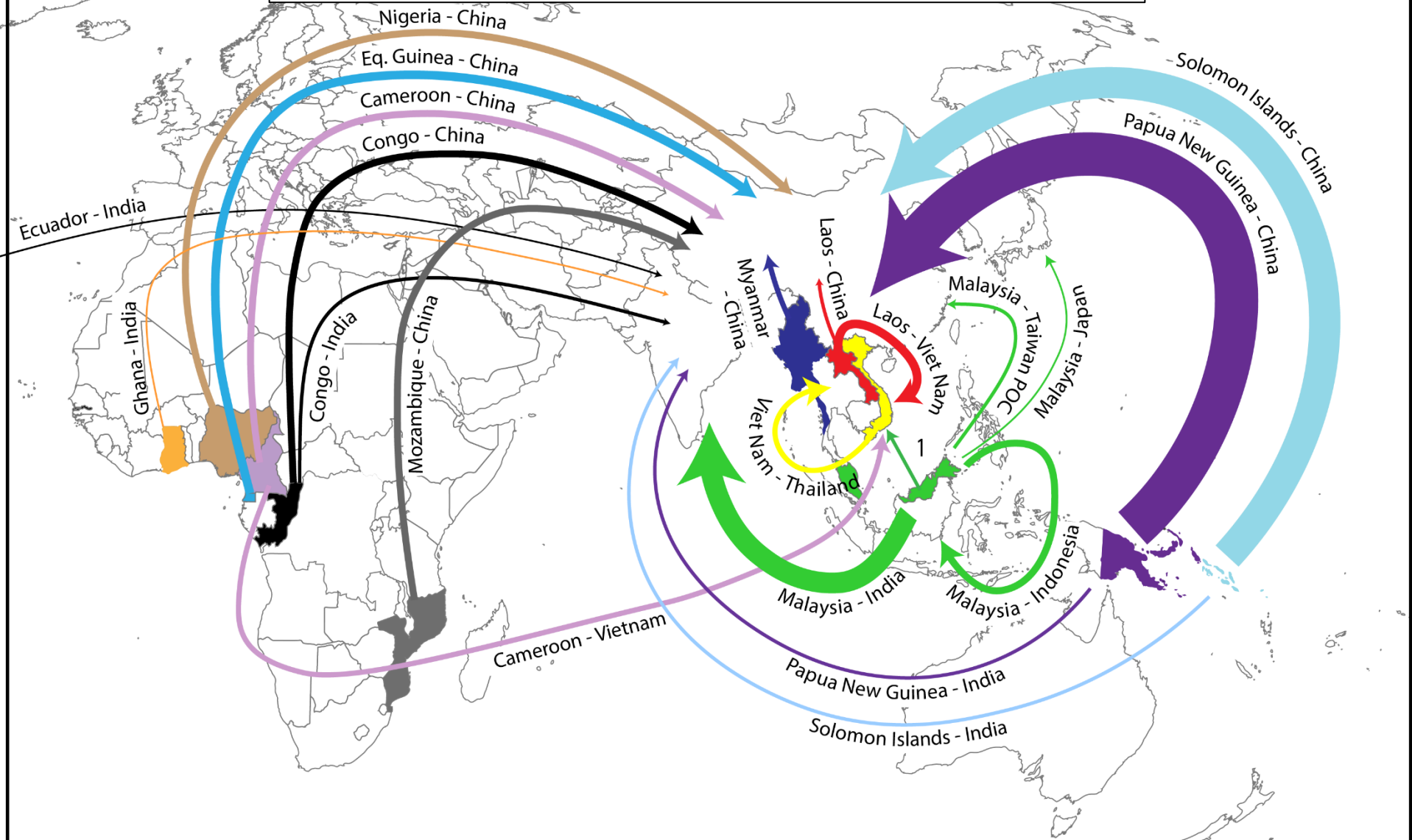
Tropical log production, ITTO producer regions



Tropical log production, major ITTO producers



MAJOR TRADE FLOWS 2015: TROPICAL LOGS

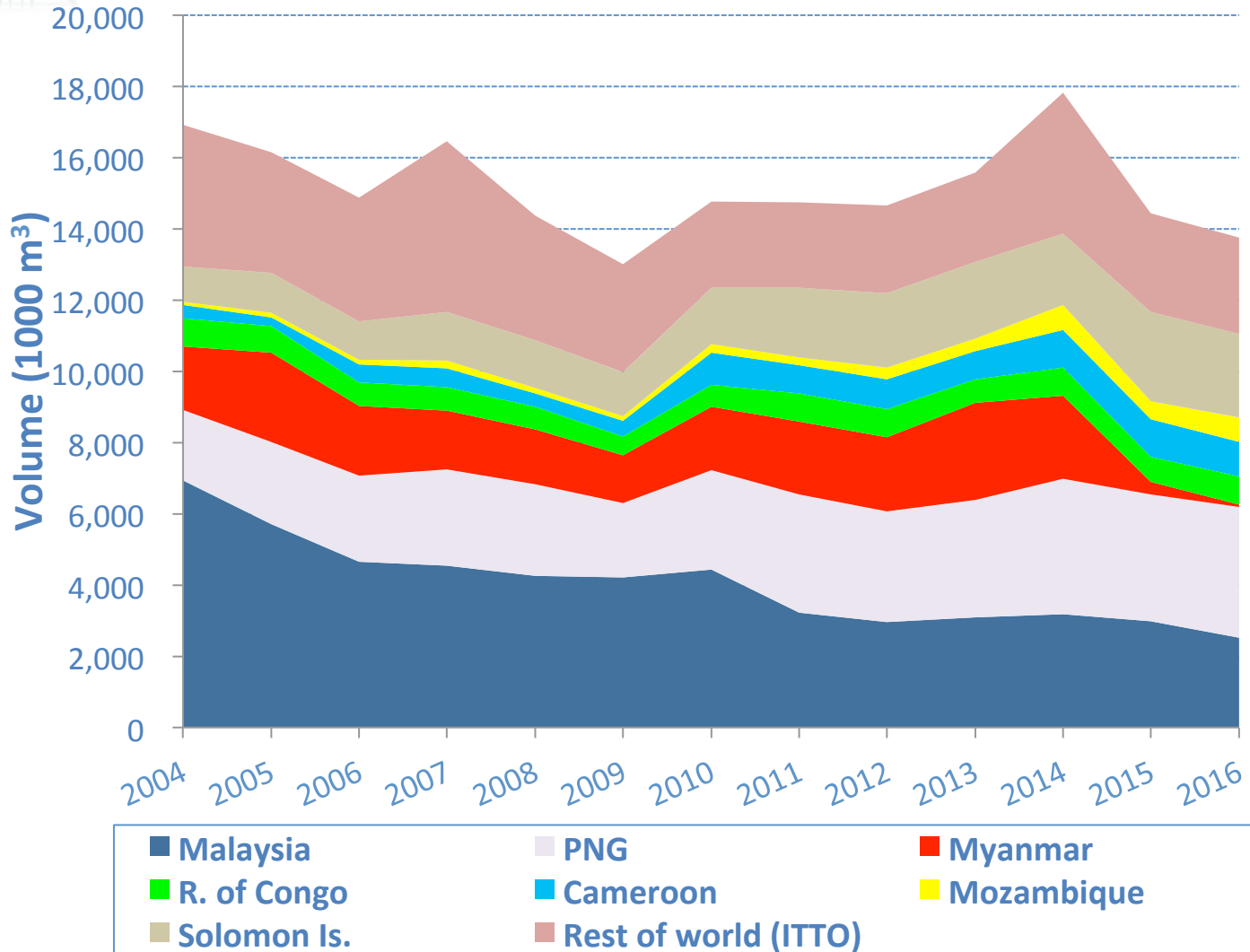


WIDTH SCALE: Papua New Guinea - China = 3.2 mill. m³

1 Malaysia - Viet Nam

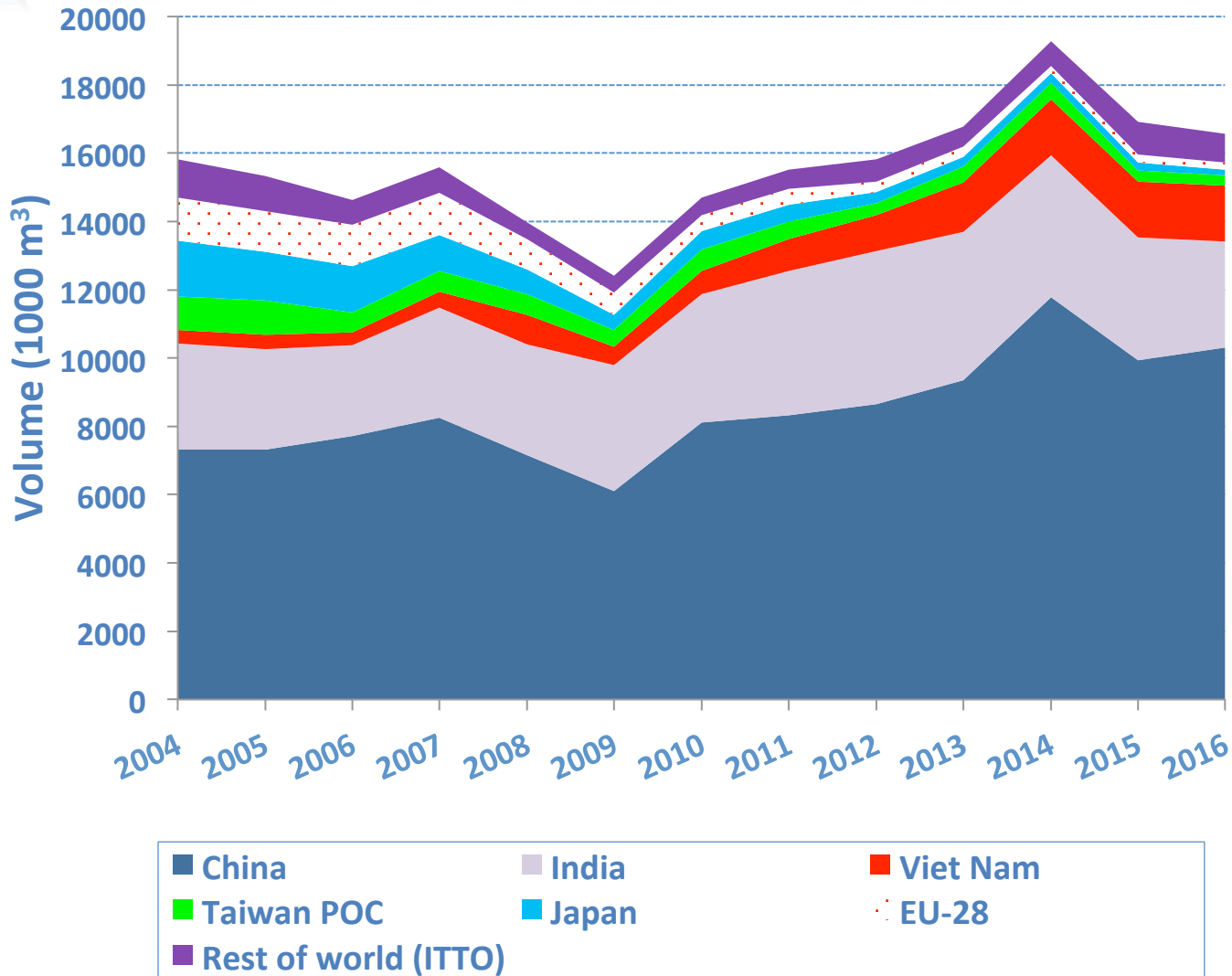


Major exporters of tropical logs





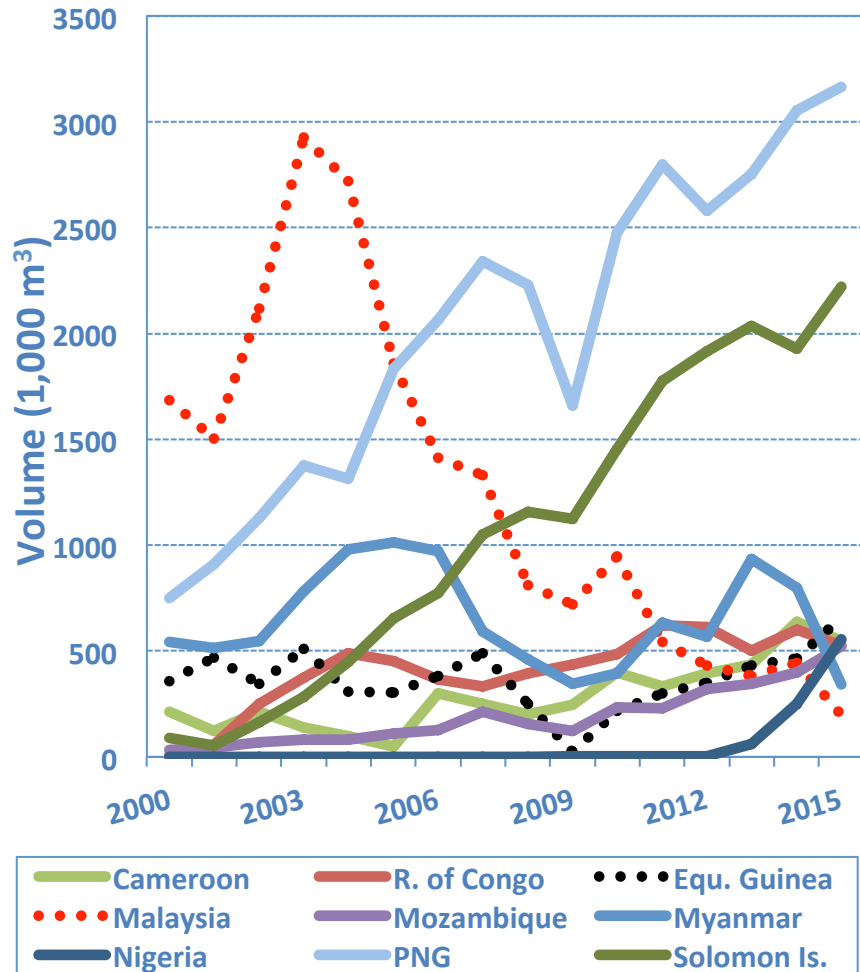
Major importers of tropical logs



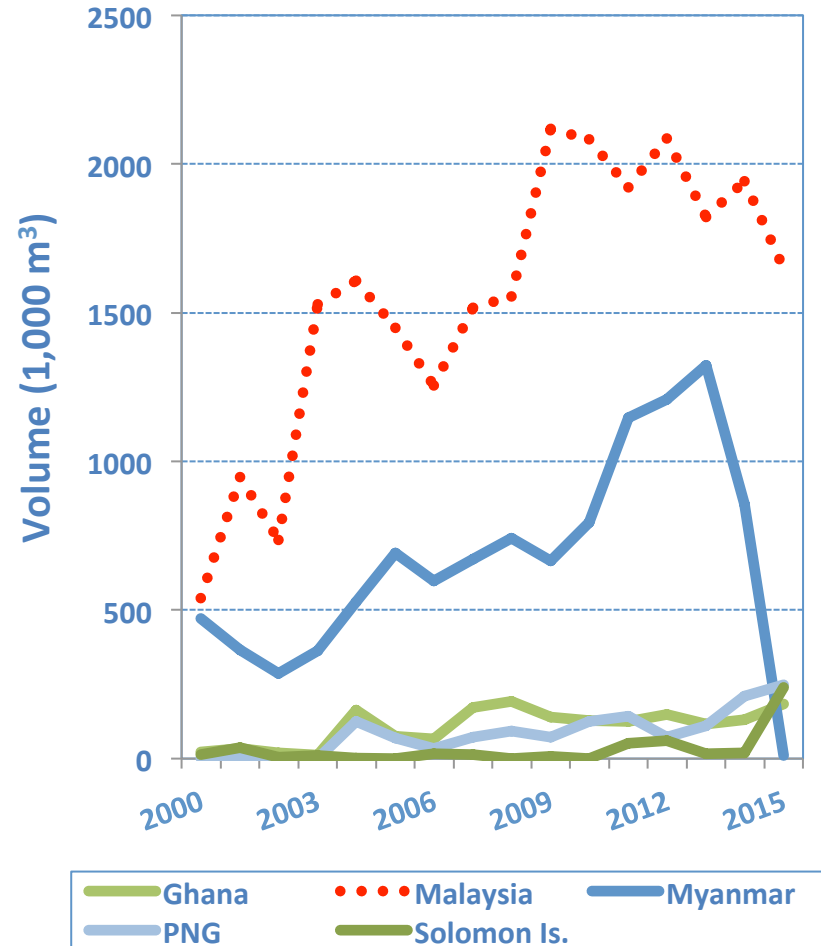


China and India: Imports of tropical logs, 2000-2015

China: Tropical log imports

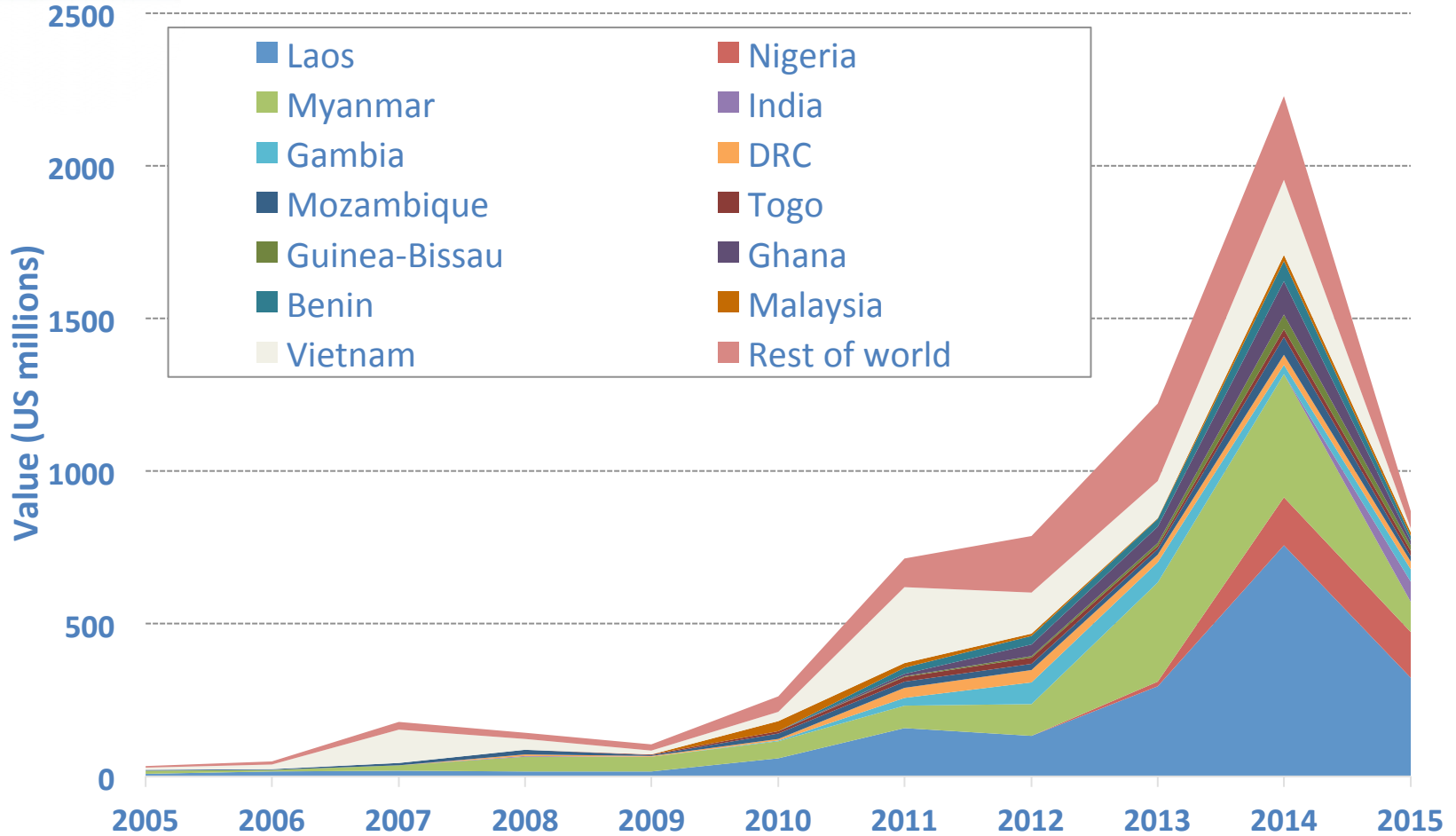


India: Tropical log imports





China imports of “rosewood” logs, 2005-2015

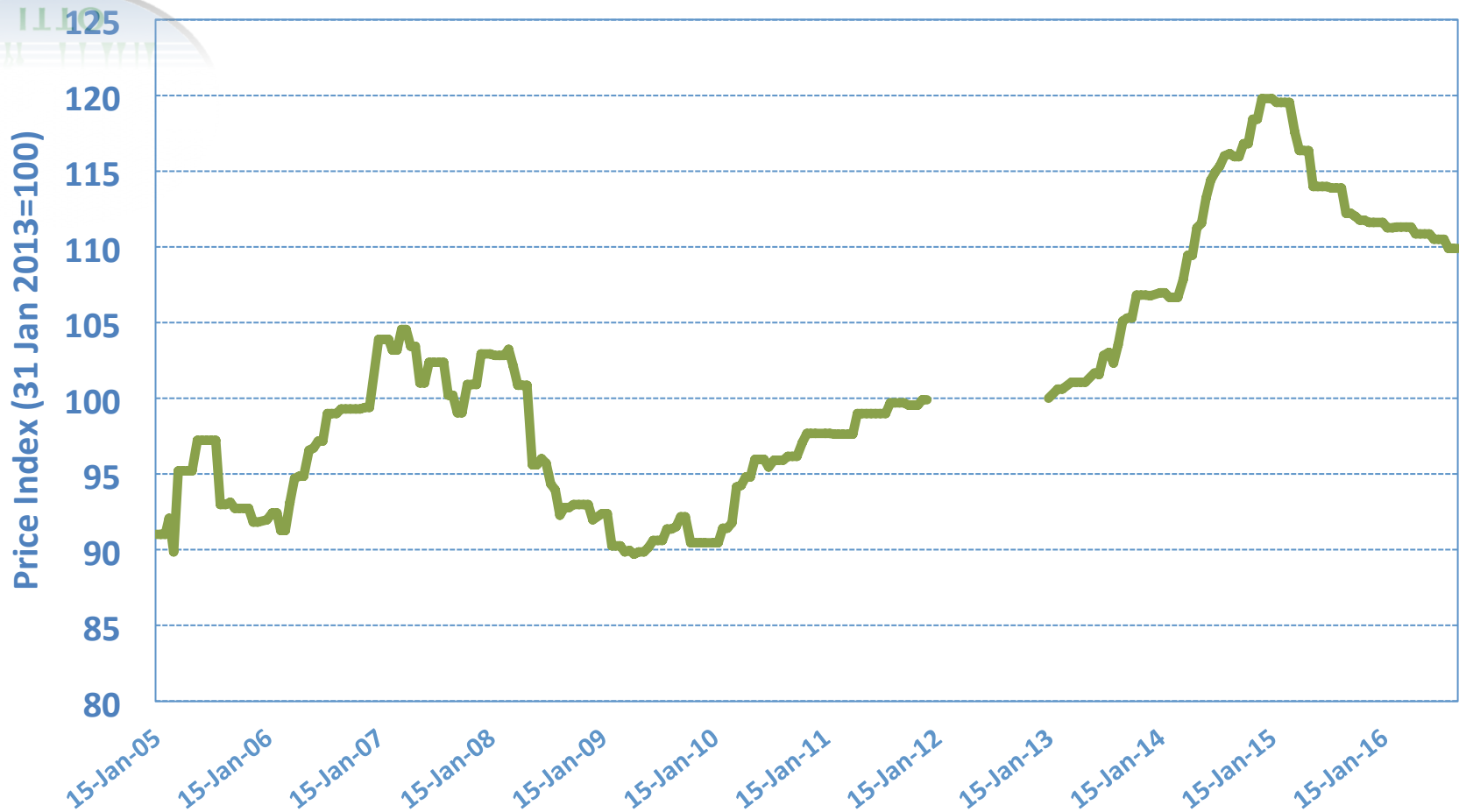


Source: World Trade Atlas

Note: “Rosewood” log figures include all imports classified in HS code 44039930, which include a number of species within the genera *Dalbergia*, *Pterocarpus*, *Millettia*, *Cassius* and *Diospyrus*.



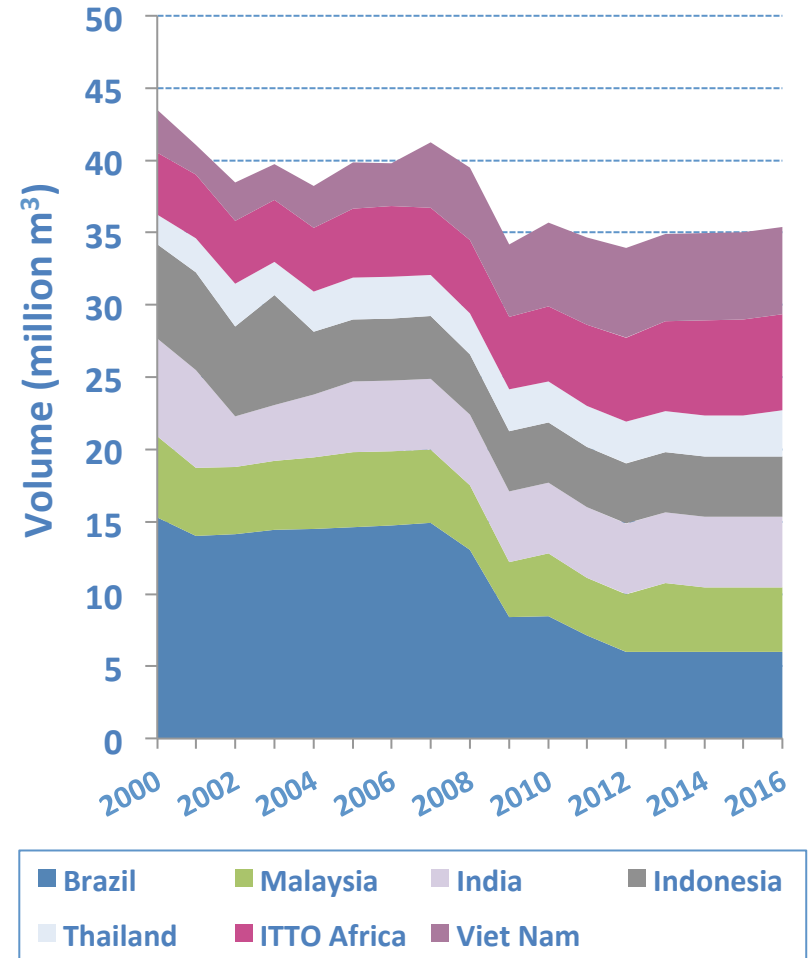
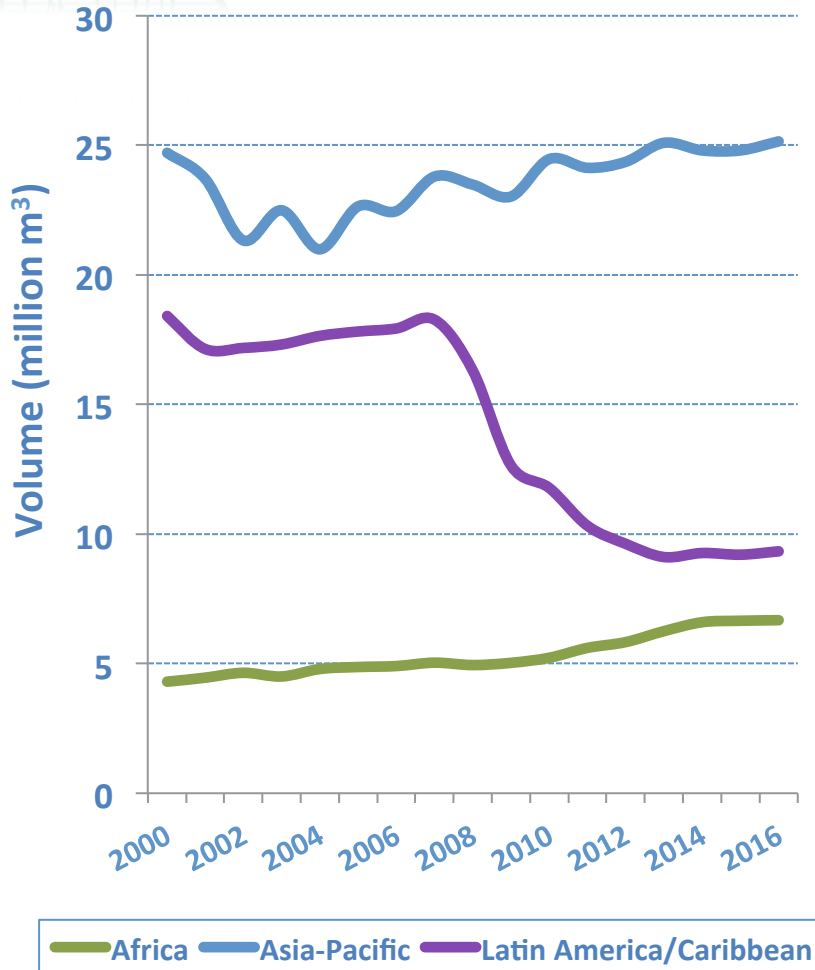
West Africa Log Export Price Index



Note: This index is based on two-weekly nominal euro prices/m³ of selected West African species
Source: ITTO Tropical Timber Market Report, various issues. Data unavailable for 2012.



Production of tropical sawnwood, by region and major ITTO producers, 2000-2016



MAJOR TRADE FLOWS 2015: TROPICAL SAWNWOOD

Brazil - USA

Cameroon - Belgium

Cameroon - Italy

Cameroon - China

Gabon - China

Thailand - China

1

2

3

4

5

1

2

3

4

5

1

2

3

4

5

1

2

3

4

5

1

1 Laos - Thailand

2 Laos - Viet Nam

3 Malaysia - Singapore

4 Malaysia - Thailand

5 Cambodia - Viet Nam

Philippines - China

Malaysia - Philippines

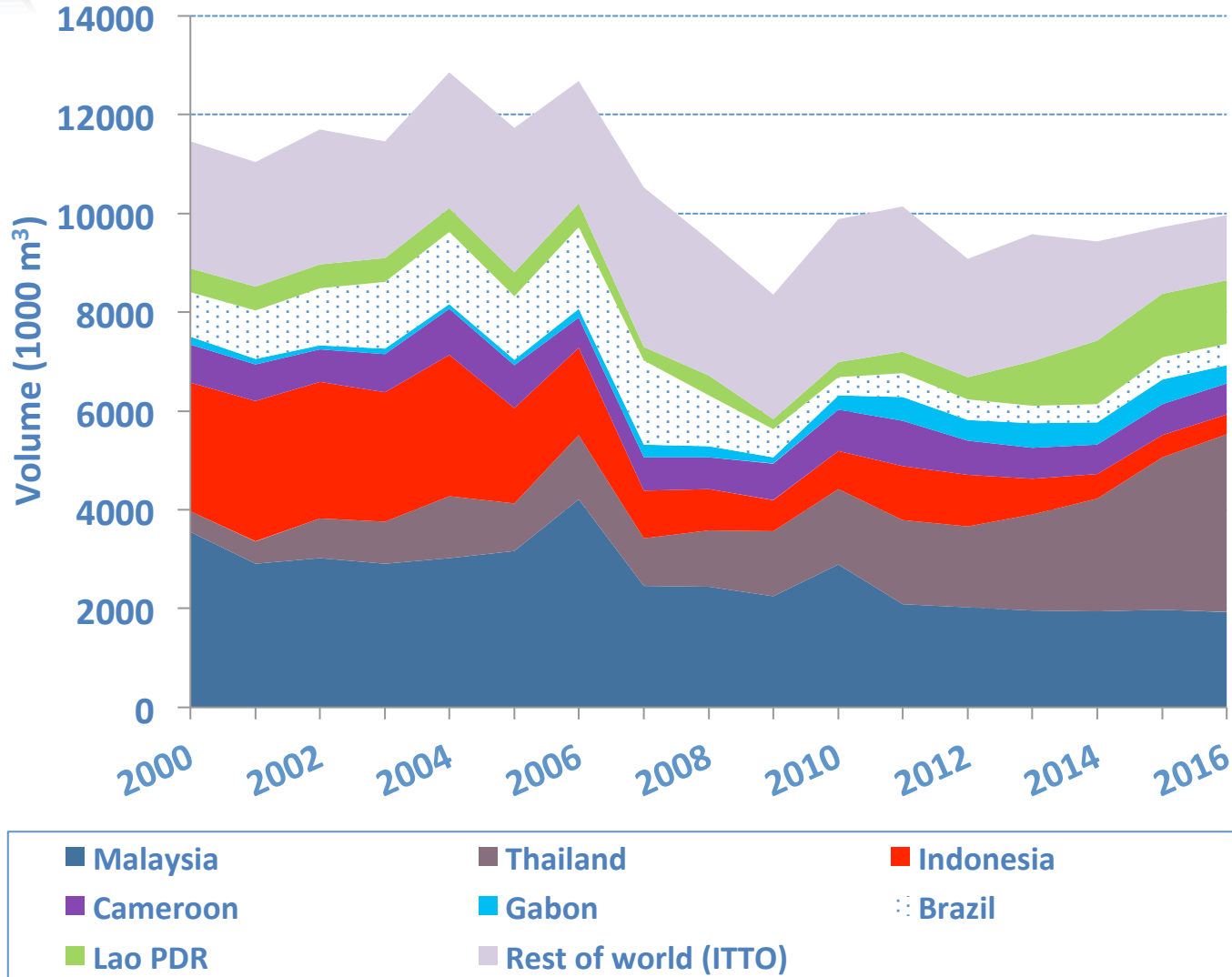
Indonesia - China

Malaysia - UAE

WIDTH SCALE: Thailand - China = 3.1 mill. m³

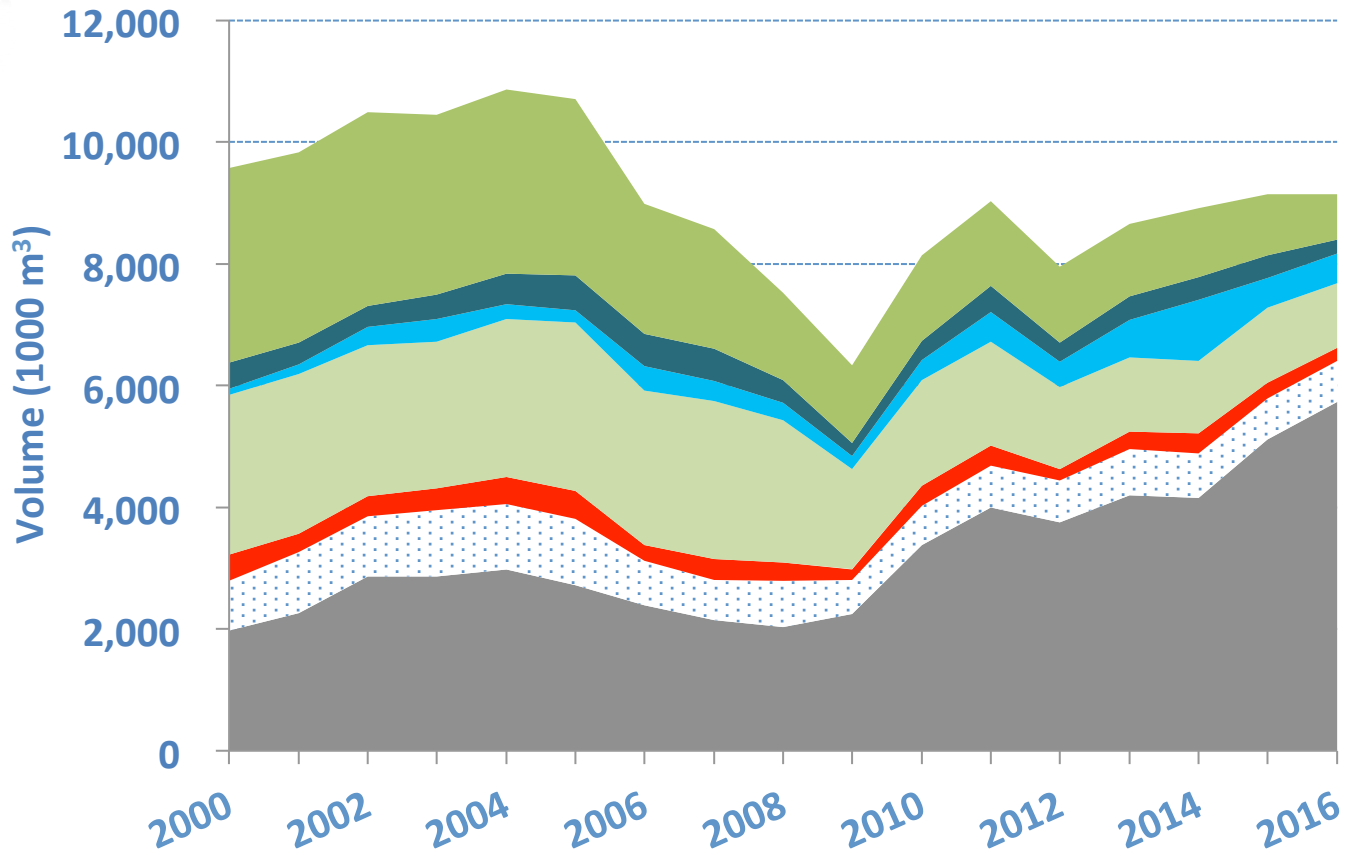


Tropical sawnwood exports, major tropical countries, 2000-2016





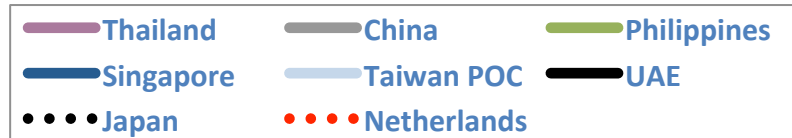
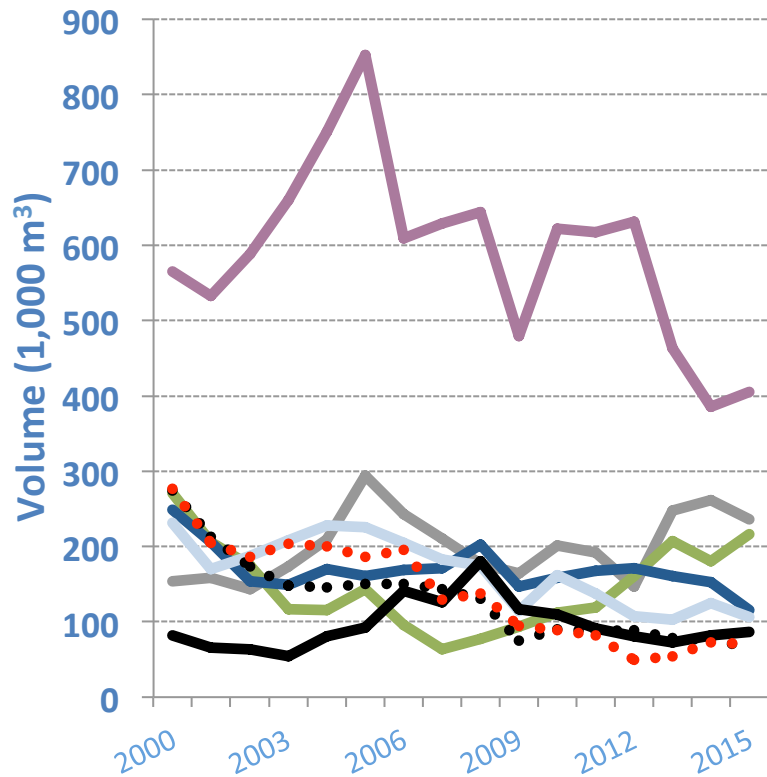
Tropical sawnwood imports, major ITTO countries 2000-2016



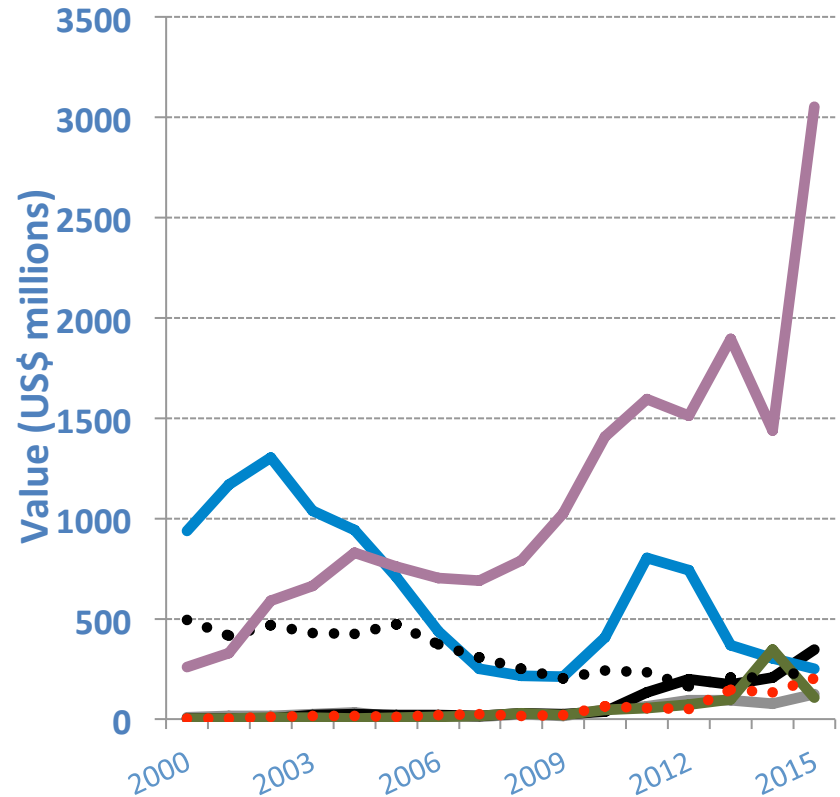


Tropical sawnwood trade, major countries, 2000-2015

Malaysia: Exports of tropical sawnwood

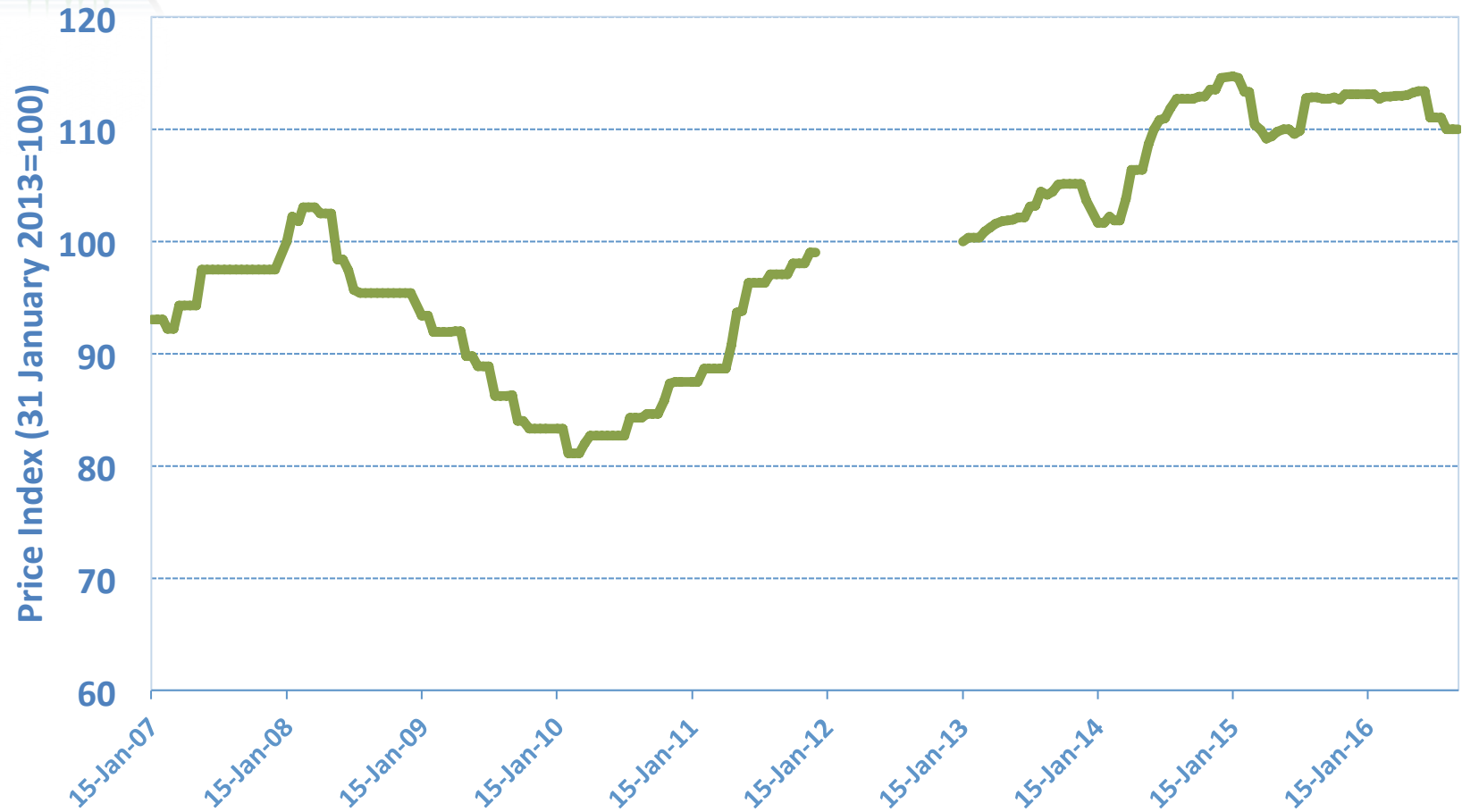


China: Imports of tropical sawnwood





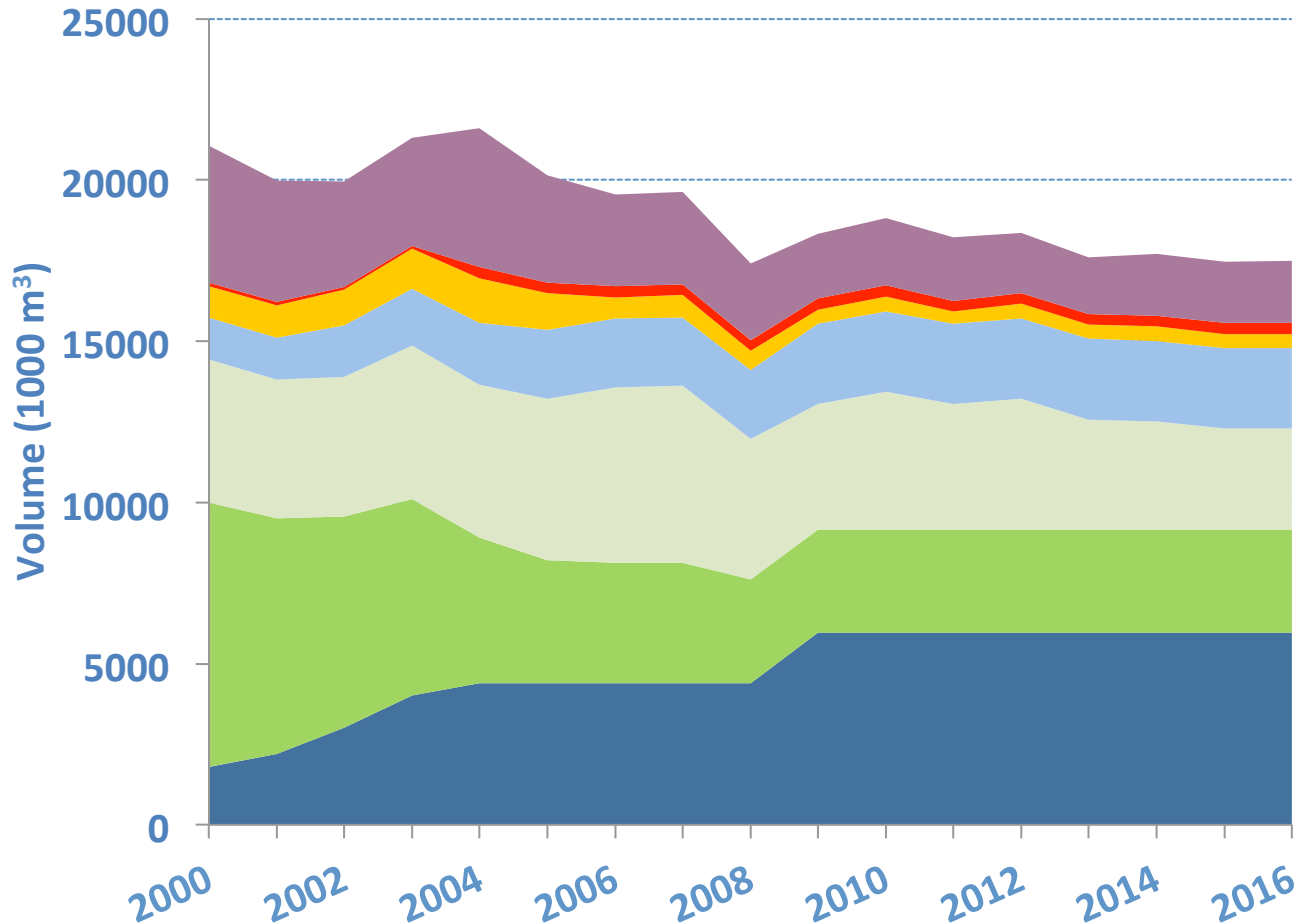
West Africa Sawnwood Export Price Index



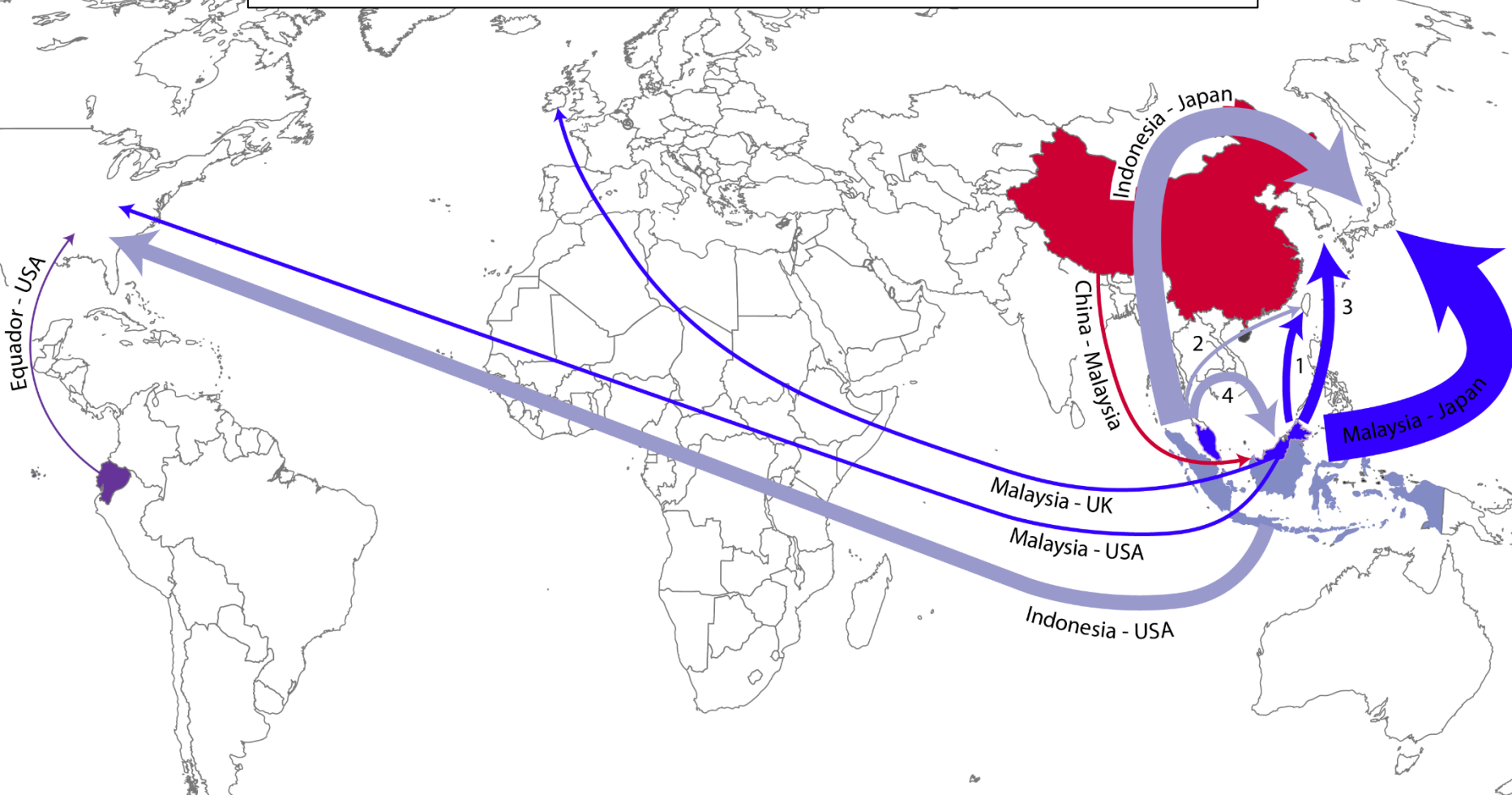
Note: This index is based on two-weekly nominal euro prices/m³ of selected West African sawnwood species.
Source: ITTO Tropical Timber Market Report, various issues. Data unavailable for 2012.



Production of tropical plywood, major ITTO countries



MAJOR TRADE FLOWS 2015: TROPICAL PLYWOOD

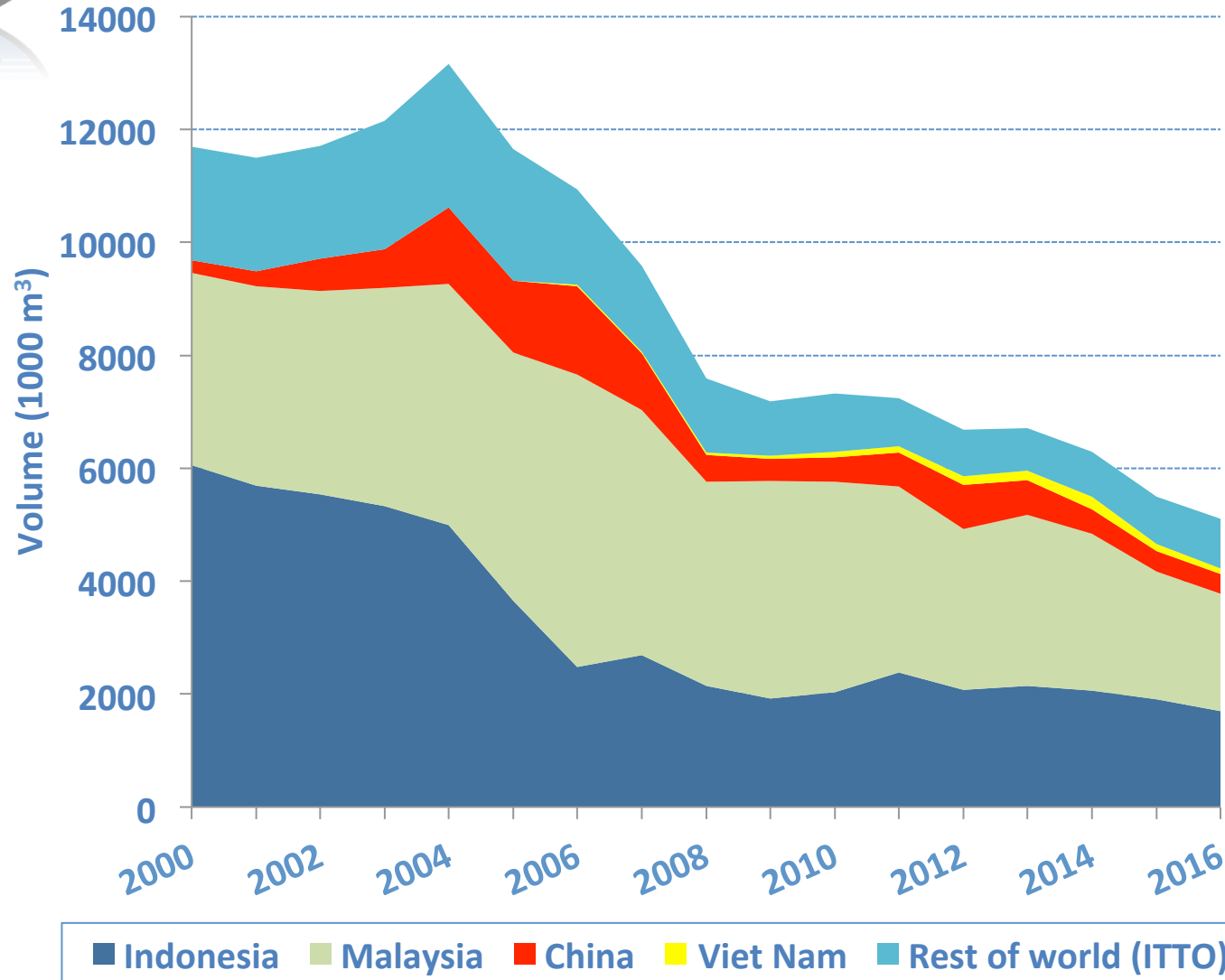


- 1 Malaysia - Taiwan POC
- 2 Indonesia - Taiwan POC
- 3 Malaysia - R. of Korea
- 4 Indonesia - Malaysia

WIDTH SCALE: Malaysia - Japan = 1.1 mill. m³

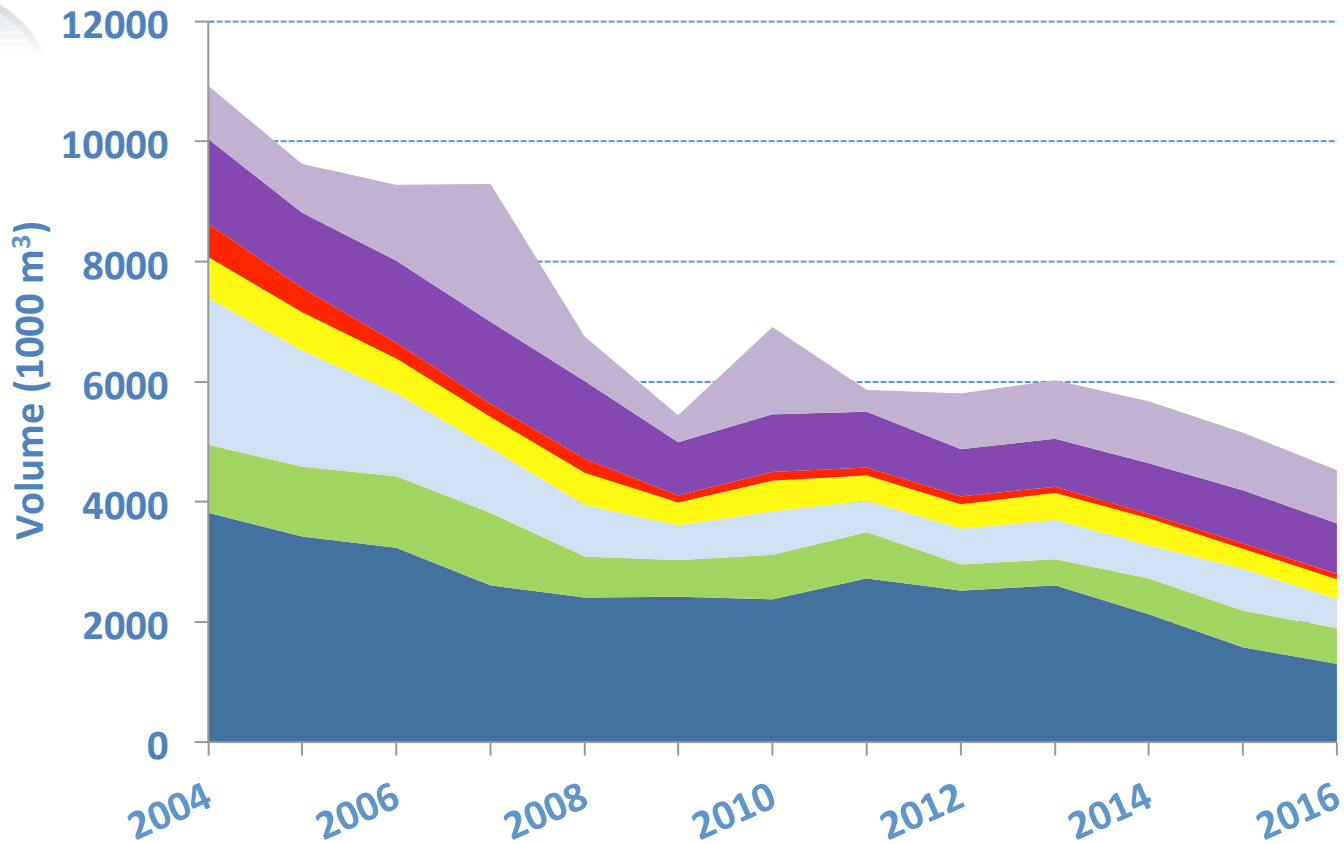


Major exporters of tropical plywood



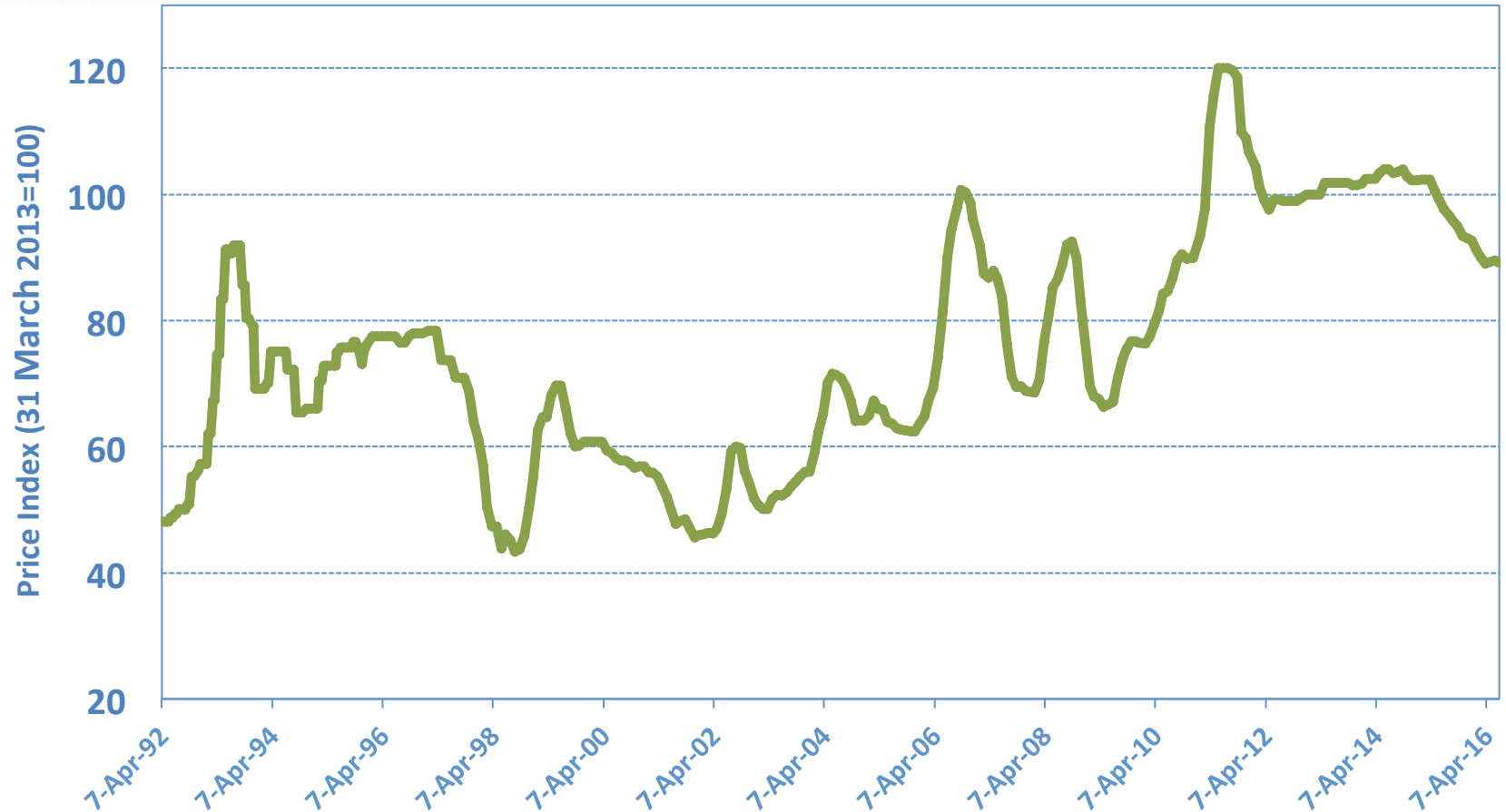


Major importers of tropical plywood





Japan Plywood Import Price Index



Note: This index is based on two-weekly nominal dollar prices/m³ of Indonesian panels for concrete formwork (12 mm 3'X6' JAS C&F), Indonesian floor bases (3'x6' JAS C&F) and Indonesian thin panels (3'x6' JAS C&F).

Source: Japan Lumber Reports, various issues.



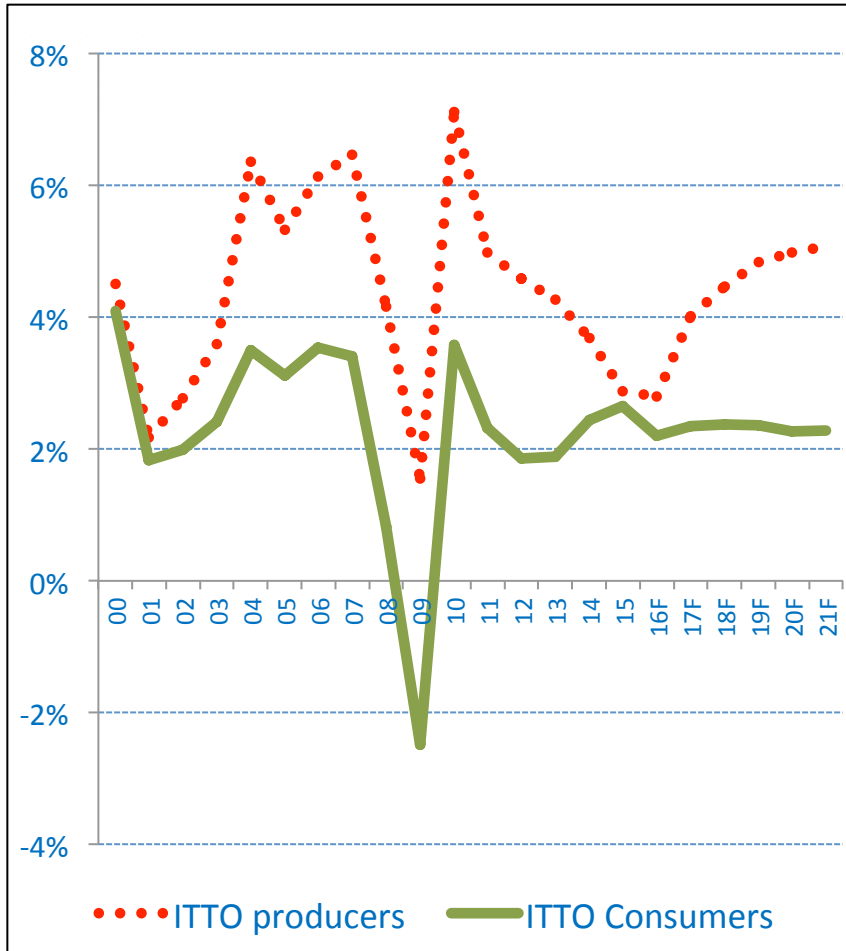
MARKET ISSUES



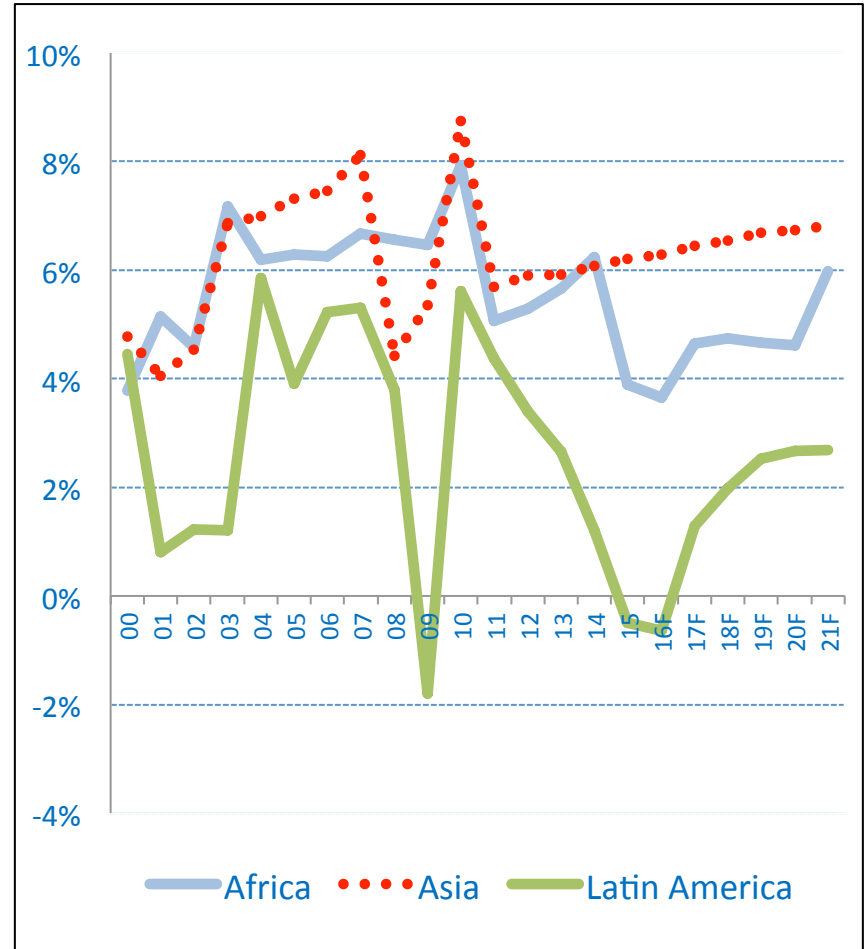


Real GDP growth, 2000-2021

ITTO Producers and Consumers



ITTO Producer Regions



Source: IMF Outlook Database October 2016 (F=Forecast)

Source: IMF Outlook Database October 2016 (F=Forecast)



Other market issues

- China economic growth and demand levels
- Contagion effects of China downturn on tropical wood products trade
- Brexit; threats and opportunities
- Impact of new preferential trade agreements on wood products trade
- Relative market competitiveness of competing wood and non-wood products
- Decline in tropical hardwood availability and quality
- Design trends and consumer preferences
- Product innovation and building trends
- Energy prices
- Climate change; effectiveness of policies
- Elimination of illegally logged wood from supply chains in major tropical wood processing countries.



ITTO Biennial Review and Assessment of the World Timber Situation 2015-2016

Available at www.itto.int



itto-stats@itto.int