

INTERNATIONAL TROPICAL TIMBER ORGANIZATION

ITTO

PROJECT PROPOSAL

TITLE	THE ESTABLISHMENT OF THE DATABASE OF TROPICAL INDUSTRIAL LESSER USED WOOD SPECIES
SERIAL NUMBER	PD 58/97 Rev.1 (I)
PERMANENT COMMITTEE	FOREST INDUSTRY
SUBMITTED BY	GOVERNMENT OF JAPAN
ORIGINAL LANGUAGE	ENGLISH

SUMMARY

A number of projects aimed at introducing Lesser Used Species (LUS) to the national and international markets have been implemented by local, national, regional and international institutions including projects financed by ITTO. As a result, a large amount of knowledge have been accumulated and kept in stock. However, in practice, there are some difficulties in utilizing these outputs intended for relevant officials, private sectors and other interested parties because of the lack of an integrated and holistic database.

In this respect, this project seeks to make a comprehensive database of the tropical timber species available, especially LUS, for all interested parties by compiling existing data and relevant information collected within projects funded by ITTO but also other national/international schemes.

EXECUTING AGENCY	ITTO	
COOPERATING GOVERNMENTS	ALL ITTO MEMBER COUNTRIES	
DURATION	24 MONTHS	
APPROXIMATE STARTING DATE	TO BE DETERMINED	
BUDGET AND PROPOSED SOURCES OF FINANCE	Source	Contribution In US\$
	ITTO Contribution	US\$502,033.00
	TOTAL	US\$502,033.00

Table of Contents

PART I : CONTEXT

- A. Relevance to ITTO
 - 1. Compliance of ITTO Objectives
 - 2. Compliance of ITTO Criteria
 - 3. Relationship to ITTO Action Plan and Priorities
- B. Relevance to National Policies
 - 1. Relationship to sectorial policies affecting tropical timber
 - 2. Relationship to aims and programmes
 - 3. Institutional and legal framework

PART II : THE PROJECT

- 1. Origin
- 2. Project Objectives
 - 2.1 Development Objective
 - 2.2 Specific Objectives
- 3. Project Justification
 - 3.1 Problems to be addressed
 - 3.2 Characteristics of the region or area where the project will be located
 - 3.3 Other relevant aspects of the "pre-project situation"
 - 3.4 Intended situation after project completion
 - 3.5 Target Beneficiaries
 - 3.6 Project Strategy
 - 3.6.1 Reasons for selection
 - 3.6.2 Lessons from past evaluation
 - 3.6.3 Technical and Scientific aspects
 - 3.6.4 Economic aspects
 - 3.6.5 Environmental aspects
 - 3.6.6 Social aspects
 - 3.6.7 Managerial aspects
 - 3.7 Reasons for ITTO support
 - 3.7.1 ITTO Aspects
 - 3.7.2 Relationship to relevant actions supported by other donors
 - 3.8 Risks
- 4. Outputs
- 5. Activities and inputs for the output
- 6. Logical Framework Worksheets
- 7. Work Plan

8. Institutional arrangement for execution and operation
- 8.1 Management Structure
- 8.2 Future operation and maintenance
- 8.3 Key staff
9. Prior Obligation and prerequisites
10. Possible future actions

PART III: MONITORING, REPORTING AND EVALUATION

1. Project progress reports
2. Project completion report
3. Monitoring, reviews and Steering Committee
4. Evaluation

PART IV: BUDGET

PART I CONTEXT

A. Relevance to ITTO

1. Compliance of ITTO Objectives

The project has a direct relationship with the ITTO objectives described in (e) and (h) of Article 1, ITTA, 1994. They can be read:

- (e) To promote the expansion and diversification of international trade in tropical timber from sustainable sources by improving the structural conditions in international markets, by taking into account, on the one hand, a long-term increase in consumption and continuity of supplies, and on the other, prices which reflect the costs of sustainable forest management and which are remunerative and equitable for members, and the improvement of market access;
- (h) To improve market intelligence with a view to ensuring greater transparency in the international timber market, including the gathering, compilation, and dissemination of trade related data, including data related to species being traded.

2. Compliance of ITTO Criteria

The project is also consistent with each of the seven criteria laid out in Article 25 of the ITTA, 1994 as shown below.

- (a) Their relevance to the objectives of this Agreement;

The Project is consistent with the objectives as indicated above.

- (b) Their environmental and social effects;

Any negative direct effects are not foreseen since the Project is to compile the results of former projects.

- (c) The desirability of maintaining an appropriate geographical balance;

The Project contributes to all producing countries through the production of the comprehensive database of LUS.

- (d) The interests and characteristics of each of the developing producing regions;

Promotion of use of LUS is one of the most interesting issue for all of producing countries. It provide their forests an additional value through creating or expanding demand of LUS.

- (e) The desirability of equitable distribution of resources among the fields referred to paragraph 1 of this article;

The Industry division is represented in project work.

(Each project should not be evaluated from this point which refers the balance of the field.)

- (f) Their cost - effectiveness;

The economic effect of the Project would be significant through the improvement of the access to information on LUS, and consequent increased economic effects. On the other hand, the cost of the

Project is calculated reasonably.

- (g) The need to avoid duplication of efforts.
No similar activity has been carried out so far.

3. Relationship to ITTO Action Plan and Priorities

The project is subject to c) in the field of Forest Industry of Strategies and Action Plan, which is expressed as "Promotion of new species and products and the use of tropical timber in construction".

And also it is directly linked with g) of "Marketing" in Forest Industry in "Elements of a Programme of Work", which indicates "Publish promotional materials such as catalogues on new species, technical sheets etc."

B. Relevance to National Policies

1. Relationship to sectoral policies affecting tropical timber

The Government of Japan has continuously supported ITTO and its activities since its founding, both to ensure the source of the timber as a consuming country and to tackle the tropical forest issue through facilitating the achievement of the sustainable management of the tropical forests. The project is proposed along this context of the policy.

2. Relationship to sub-sectoral aims and programmes

The government of Japan recognises promotion of the use of LUS as one of the key subjects to decrease the conversion of the forests into other land use through adding more value to the forest and continuously supporting the activities in this field.

3. Institutional and legal framework

ITTO has carried out projects on enhancing LUS utilisation. Since the main activity of the project is to compile the outputs of the number of projects implemented by diverse agencies through ITTO, ITTO is the most appropriate executing agency to conduct the project activities. Since work has been carried out by both Forest Industry and Market Intelligence division, consideration will be required to integrate all project outputs.

PART II THE PROJECT

1. Origin

The project is a kind of comprehensive reviewing activity of LUS studies and projects financed by ITTO and implemented by other relevant institutions (Annex 1).

2. Project Objectives

2.1 Development Objective

To promote the utilisation of Lesser Used Species (LUS) in tropical countries, and their wider acceptance in timber markets.

2.2 Specific Objectives

To facilitate the access to the data and information on various aspect of Lesser Used Species (LUS) for government officials, forest industries, timber traders and other interested parties.

3. Project Justification

3.1 Problems to be addressed

There are common recognition and understandings that the promotion for utilisation of LUS is an essential issue in terms of achieving sustainable tropical forest management. That increases the value of the tropical forests which are species-rich and complicated structural ecosystem. However, economic circumstances and motivation often forces tropical forests to convert into other land use such as farmland or pastures, and not to retain as sustainable sources from which benefits are continuously derived . In this respect many and various efforts aiming at promotion of use of LUS have been taken by ITTO member countries and various institutes and agencies.

However these individual outputs are seldom linked closely, and the available data and relevant information of Lesser Used Species (LUS) are scattered individually. Therefore it is difficult for interested parties to utilise timely and effectively.

3.2 Characteristics of the region or area where the project will be located

This project aims at the tropical forest regions as a whole.

3.3 Other relevant aspects of the "pre-project situation"

The situation of the copyright of the references and literature produced by institutions and agencies *which implemented ITTO projects, such as OFI (PROSPECT) and CTFT, as well as* out of ITTO scheme is uncertain at this stage. In the process of the collection of the data on LUS, it should be clarified.

3.4 Intended situation after project completion

As the outputs of the project, the database of LUS in CD-ROM with manuals and printed materials would be produced and disseminated to all member countries and interested parties. But necessary cost for another duplications should be borne by those whom would hope for distribution. It is also necessary for ITTO or an appropriate institution to control and maintain the outputs.

The information including physical characteristics, current growing stock estimated, latest price and present and potential usage compiled in the database would assist making strategy for officials in producing countries to facilitate the utilisation of LUS. It would also make users and traders aware of new and cheaper materials both in producing countries and consuming countries.

In addition, anyone who is interested in the LUS will be able to access the information compiled at ITTO's homepage via world wide web. Feed backs from users' would facilitate the improvement of the database.

3.5 Target Beneficiaries

The target users of the database would be officials of all member countries and all intended private parties including forest industries, timber traders, wholesalers, retailers and consumers. In addition, they might be valuable and efficient references for scientific or academic activities since this kind of comprehensive and updated database on the subject of tropical timber, especially on LUS, has been rarely provided for.

3.6 Project Strategy

3.6.1 Reasons for selection

The concept of the proposal is to make prior results of the LUS-related projects efficient through creating integrated database. This is quite cost efficient because no further primary data collection would be required.

3.6.2 Lessons from past evaluation

A number of projects aimed at introducing LUS to national and international market, were or have been implemented by local, national, regional and international institutions, and several projects have been financed by ITTO (see Annex 1). An assessment of these outputs shows a lack of unity in their formats and languages making it difficult to search for something through the whole results.

Therefore, there is a necessity of compiling existing available data and relevant information on the subject of tropical timber including LUS in the same format and language in convenient media.

3.6.3 Technical and Scientific aspects

The lack of the comprehensive and integrated database of LUS has frequently caused problems in scientific research to grasp their distribution and distributed countries, or current stock. In addition, the absence of sufficient information is a barrier to develop processing technique and know-how, and to understand characteristics or regeneration status. This project contributes to solve these constraints with the comprehensive database.

3.6.4 Economic aspects

The promotion of LUS utilisation increases the value of the tropical forests which are species-rich and complicated structural ecosystem. However, economic circumstances and motivation often forces tropical forests to convert into other land use such as farmland, and not to retain as sustainable resources from which benefits are continuously derived. At the same time, the database contributes to increasing the profit earned from existing Permanent Forest Reserves through generating additional value of the concessions. In addition, information of potential of forests including availability of LUS might facilitate accurate guidance for investment to the forest industries.

3.6.5 Environmental aspects

There are no direct influences of the project to environment since the project activities would not include any field activity. However indirect negative effect might be identified if appropriate policies and conducts would not be realised. That is over logging caused by additional value generated from promotion of using LUS. Therefore the development of proper policies and conducts (as per ITTO's Guidelines) would be required to control logging activities.

The database would be expected to contribute to the conservation of the biological diversity of wood species through provision and systematic compilation of information on tropical tree species and by preventing extensive on few species.

3.6.6 Social aspects

Any direct participation of local community would not be expected since this project does not include any field activities. However an opportunity would be provided to take part in the activity of the process for NGOs (e.g. World Conservation Monitoring Centre : WCMC) through the expert meeting.

3.6.7 Managerial aspects

ITTO would have responsibility to all aspects of project management. The reasons of the selection of this structure are as follows:

- this project is reviewing activity of LUS related projects carried out by number of bodies within ITTO scheme, and therefore ITTO is most appropriate body in conjunction with copy rights; and
- all of the member countries of ITTO are expected as target beneficiaries.

3.7 Reasons for ITTO support

3.7.1 ITTO Aspects

The project has a direct relationship with the ITTO objectives described in (e) and (h) of Article 1, ITTA, 1994. The development and promotion for utilisation of LUS is one of ITTO's important roles to contribute to sustainable tropical forest management.

3.7.2 Relationship to relevant actions supported by other donors

Although any direct partnership with the other institutes will not be expected, since the database should be comprehensive, efforts would be taken to include existing information on LUS as much as possible including developed by other institutes or agencies.

3.8 Risks

There are two potential risks for implementing this project. First of all, there is a possibility not to be able to access existing available data and relevant information on the subject of tropical timber focused on LUS compiled out of ITTO, because of copyright considerations. Secondly, there exists a possibility that ITTO member countries would lose their interests of promoting LUS utilisation.

4. Output

Database on tropical tree species including LUS in CD - ROM and printed materials

5. Activities and inputs for the output

Activities		Inputs
Activities for Output		
Database on LUS in CD - ROM and printed materials		
1	Identification and collection of information on related materials and literature	Consulting service for 3 months and ITTO
2	<i>Coordination and arrangement of copy rights with relevant institutions</i>	<i>Consulting service for 2 months and ITTO</i>
3	Creation of the first draft of the format	Consulting service for 2 months and ITTO
4	Invitation and compilation of the comments on the first draft of the format for member countries	Consulting service for 2 months and ITTO
5	Creation of the second draft of the format with taking into account of the comments	Consulting service for 1 months and ITTO
6	Convening the expert meeting to finalise the format	Consulting service for 1 month, 12 experts for 3days and ITTO
7	Development of the database system for CD-ROM	Sub contract and consulting service for 2 months
8	Input of the data and information collected into the format in original languages	Sub contract
9	Translation of the database into English	Sub contract and consulting service for 4 months
10	Checking and improving the database system and the text	Sub contract and consulting service for 3 months

- | | | |
|----|--|--|
| 11 | Printing CD - ROM and hard copies | Sub contract |
| 12 | Distribution of the CD-ROM and hard copies of the database produced | Communication fee and ITTO |
| 13 | <i>Establishment of the electronic version of the database in the ITTO's Internet homepage</i> | <i>Sub contract and ITTO</i> |
| 14 | Preparation of a final report | Consulting service for 3 months and ITTO |

6. **Logical Framework Worksheets**

See Annex 2

7. **Work Plan**

See Annex 3

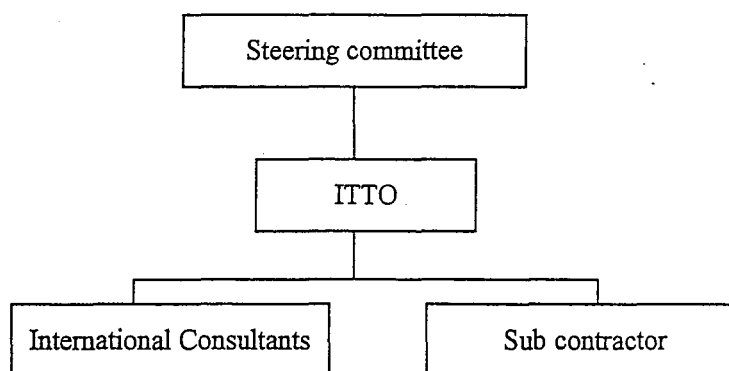
8. **Institutional arrangement for execution and operation**

ITTO has responsibility for all aspects of the project. As consulting service will be appointed for the core activities.

8.1 **Management structure**

Management structure is as indicated below. The steering committee consists of ITTO, international consultants and representative(s) of donor(s).

Management Structure



Steering committee meeting will be convened at least twice a year.

8.2 Future operation and maintenance

The ITTO Secretariat will be responsible for future operation and maintenance. As the outputs of the project, the database of LUS in CD-ROM with Users' Manuals and printed materials would be produced and disseminated to all member countries and relevant parties free of charge. However, after that, necessary duplication cost should be borne by recipients demanding additional copies. It is also essential for ITTO and an appropriate institution contracted with ITTO, to manage and maintain the CD-ROM database and to make necessary amendments as new / additional data become available. *In addition, the database will be presented in the ITTO home page on the World Wide Web for wider dissemination, and it will be an opportunity to receive comments from users for further improvements.*

These outputs will be beneficial for ITTO to fulfil ITTO's mandate through making update, reliable information on LUS available for all potential users in the integrated database which is convenient for search.

8.3 Key staff

The success of this project will depend on a consultant who have to implement core activities including drafting the format and coordination and arrangement of copyright for the materials produced by institutions outside of ITTO.

Capable sub-contractors will be another key to the success of the project.

All of these key staff will be appointed after the proposal is approved and financed.

9. Prior obligation and prerequisites

Prior to the start of this project, securing the copyright which will be generated within the implementation of the project would be required. Since the project outputs include the data collected / created by other activities, careful attention should be paid.

10. Possible future actions

Additional copies would be produced when all of stock will be distributed. The cost of the printing should be borne by the sales of the CD-ROM and printed materials.

When the information on tropical tree species including LUS will be further accumulated in the future, the database should be updated, possibly through a future project.

PART III MONITORING, REPORTING AND EVALUATION

1. Arrangement for reporting

Progress reports will be submitted to the ITTO and the Committee every 6 months starting from commencement date of project implementation.

A final report will also be submitted to the ITTO for final completion appraisal. *These reports will be prepared by the consultant(s), with input from ITTO Secretariat.*

2. Arrangements for ITTO monitoring and review

Periodic Steering Committee meetings will be convened to review and monitor project activities. The meetings will create opportunities for the international consultants to receive consultation from the ITTO Secretariat and donor countries in the interests of effective project implementation.

3. Evaluation

ITTO's independent evaluation of project performance, management, and progress will be carried out after significant outputs have been achieved. Provisionally, independent evaluation will be scheduled to be conducted 12 months after commencement of implementation.

PART IV. BUDGET

10. Project personnel

Consulting service 12,000\$/MM x 1 man x 24 months	288,000
Component total	288,000

20. Sub-contract

Development of database system	10,000
Data input	30,000
Translation	40,000
Checking and improving the database system and the text	10,000
Printing CD-ROM, a manual and hard copy	12,000
CD-ROM with users' manual	200 copies x 20\$
Hard copies	200 copies x 40\$
<i>Establishment of the electronic version of the database in the ITTO's Internet homepage</i>	<i>12,000</i>
Component total	114,000

30. Duty travel

31.	Daily substance allowance	200\$/D x 3days x 12 persons	7,200
32.	Transport cost	3,000\$/M x 13 persons	39,000
		including travel cost for the consultant	
	Component total		46,200
40.	<u>Capital items</u>		-
50.	<u>Consumable items</u>		
51.	Communication		1,000
52.	Office supply		2,000
	Component total		3,000
60.	<u>Miscellaneous</u>		
61.	Sundry	(Communication)	2,000
	Component total		2,000
	Sub-total		453,200
70.	<u>ITTO monitoring, evaluation and administration</u>		
71.	Monitoring and evaluation	5% x Costs above	22,660
72.	Administrative costs	5.5% x Costs above	26,173
	Component total		48,833
99.	Grand total		502,033

CONSOLIDATED YEARLY PROJECT BUDGET (US\$ 1,000)

CONSOLIDATED FISCAL PROJECT BUDGET (US\$ 1,000)				
ANNUAL DISBURSEMENTS		Total	1998	1999
BUDGET COMPONENTS				
10.	Project personnel	288	144	144
20.	Sub-contracts	102	10	92
30.	Duty travel	46	46	-
40.	Capital items	-	-	-
50.	Consumable items	3	1	2
60.	Miscellaneous	2	1	1
70.	ITTO Monitoring/ evaluation, and administration	48	48	-
99.	Grand total	489	250	239

OVERALL PROJECT BUDGET BY ACTIVITY

OUTPUTS/ACTIVITIES	BUDGET COMPORNENTS						
	PROJECT PERSONEL	SUB-CONTRACTS	DUTY TRAVEL	CONSUMABLE ITEMS	MISCELANIOUS	MONIT./EVA. AND ADMIN.	GRAND TOTAL
Output - Database on LUS in CD-ROM and printed materials							
Activities:							
1 Identification and collection of information on related materials and literature	24,000						24,000
2 <i>Coordination and arrangement of copyrights</i>	24,000						24,000
3 Creation of the first draft of the format	24,000						24,000
4 Invitation and compilation of the comments on the first draft of the format	24,000						24,000
5 Creation of the second draft of the format	12,000						12,000
6 Convening the expert meeting to finalise the format	12,000		46,200	2,000			60,200
7 Development of database system	24,000	10,000					54,000
8 Input the data and information collected into the format in original languages		30,000					20,000
9 Translation of the database into English	48,000	40,000					68,000
10 Checking and improving the database system and the text	60,000	10,000					80,000
11 Printing CD-ROM and hard copies		12,000					12,000
12 Distribution of CD-ROM and hard copies				1,000			1,000
13 Preparation of a final report	36,000						36,000
GRAND TOTAL	288,000	102,000	46,200	3,000	2,000	47,540	488,740

**LIST OF ITTO PUBLICATIONS AND SOFTWARE
FOR THE PROMOTION OF PROCESSING, UTILIZATION
AND TRADE OF LESSER USED SPECIES**

Publications

- "Amazonian Timbers for the International Market", Brazilian Institute for Environment and Renewable Natural Resources, 1989.
- "Identification, Properties and Uses of Some Southeast Asian Woods", Research Institute of Wood Industry, Chinese Academy of Forestry, 1991. [PD 41/88(I)] (available in English and Chinese)
- "Tropical Timber Atlas of Latin America", Centre Technique Forestier Tropical (CTFT) and Association Technique International des Bois Tropical (ATIBT), 1990.
- "Technical Sheets: New Marketable Species in South America", CTFT, 1990
- "Technical Sheets: New Marketable Species in Africa", CTFT, 1990.
- "PROSEA: Plant Resources of South-East Asia 5(1) Timber Trees: Major Commercial Timbers", Wageningen Agricultural University, 1994.
- "PROSEA: Plant Resources of South-East Asia 5(2) Timber Trees: Minor Commercial Timbers", Wageningen Agricultural University, 1995.
- "Industrial Utilization of New Forest Species in Peru". Camara Nacional Forestal (INRENA), 1996. [PD 37/88 Rev.3(I)] (available in Spanish only)
- "Tropical Timber of the African Region", Research Institute of Wood Industry, Chinese Academy of Forestry, 1996. [PD 20/92 Rev.1(I)] (available in Chinese only).
- "Identification Manual of Forest Species from the Andean Subregion", National Institute for Agrarian Research (INIA), 1996. [PD 150/91 Rev.1(I)] (available in Spanish only).

Software

- "MoreLKS: Database of End-Uses for Lesser Known Species", Version 1.51, Wageningen Agricultural University, 1992.
- "Prospect Ver. 1.1 and User's Guide - Lesser Known Tropical Wood Species - Data Base Software", Oxford Forestry Institute, 1993.

6. THE LOGICAL FRAMEWORK MATRIX

PROJECT ELEMENTS	OBJECTIVELY VERIFIABLE INDICATORS	MEANS OF VERIFICATION	IMPORTANT ASSUMPTIONS
<u>Development Objective:</u> To promote the utilisation of Lesser Used Species (LUS) in tropics.	Volume of LUS traded	Tropical Timber Situation published by ITTO	
<u>Specific Objective:</u> To facilitate the access to the data and information on LUS for government officials and other interested parties	<ul style="list-style-type: none"> Officials in charge of timber trade in member countries can use the database materials. Interested party be able to access the database with certain amount of charge. 	Project report	<ul style="list-style-type: none"> Officials recognise the importance of the LUS continuously. Private parties have interest on LUS.
<u>Output:</u> Database on tropical tree species including LUS in CD - ROM and printed materials	<ul style="list-style-type: none"> Production of CD-ROM and printing materials on database of LUS. 	CD-ROM and printed materials Project report	<ul style="list-style-type: none"> Intellectual property rights for the information on LUS owned by agencies or institutes be cleared up.
<u>Activities for Output:</u>			
1 Identification and collection of information on related materials and literature	<ul style="list-style-type: none"> Consulting service for 3 months ITTO 	Project personnel	
2 Coordination and arrangement of copy rights	<ul style="list-style-type: none"> Consulting service for 2 months ITTO 	Project personnel	
3 Creation of the first draft of the format	<ul style="list-style-type: none"> Consulting service for 2 months 	Project personnel	
4 Invitation and compilation of the comments on the first draft of the format	<ul style="list-style-type: none"> Consulting service for 2 months ITTO 	Miscellaneous	
5 Creation of the second draft of the format with taking into account of the comments	<ul style="list-style-type: none"> Consulting service for 1 month ITTO 	Project personnel	
6 Convening the expert meeting to finalise the format and to determine coverage of the existing information identified	<ul style="list-style-type: none"> Consulting service for 1 month 12 experts for 3days ITTO Office supply 	Project personnel Duty travel Consumable items	
7 Development of database system for CD	<ul style="list-style-type: none"> Sub contract Consulting service for 2 month 		
8 Input the data and information collected	<ul style="list-style-type: none"> Sub contract 	Sub contract	
9 Translation of the database into English	<ul style="list-style-type: none"> Sub contract Consulting service for 4 month 	Sub contract	
10 Checking and improving the database system and the text	<ul style="list-style-type: none"> Sub contract Consulting service for 5 months 	Sub contract	
11 Printing CD - ROM and printed materials	<ul style="list-style-type: none"> Sub contract 	Sub contract	
12 Distribution of the materials of the database	<ul style="list-style-type: none"> Communication fee ITTO 	Miscellaneous	
13 Preparation of a final report of the Project	<ul style="list-style-type: none"> Consulting service for 3 months ITTO Office supply 	Project personnel Consumable items	

7. WORK PLAN

OUTPUTS/ACTIVITIES	RESPONSIBLE PARTY	SCHEDULE (in months)																							
		1	2	3	4	5	6	7	8	9	10	11	12	13	14	15	16	17	18	19	20	21	22	23	24
Output - Database on LUS in CD-ROM and printed materials																									
Activities:																									
1 Identification and collection of information on related materials and literature	Consulting service ITTO																								
2 Coordination and arrangement of copyrights	Consulting service ITTO																								
3 Creation of the first draft of the format	Consulting service ITTO																								
4 Invitation and compilation of the comments on the first draft of the format	Consulting service ITTO																								
5 Creation of the second draft of the format	Consulting service ITTO																								
6 Convening the expert meeting to finalise the format	Consulting service ITTO 12 Experts																								
7 Development of database system	Sub contract Consulting service																								
8 Input the data and information collected	Sub contract																								
9 Translation of the database into English	Sub contract Consulting service																								
10 Checking and improving the database system and the text	Sub contract Consulting service																								
11 Printing CD-ROM and hard copies	Sub contract																								
12 Distribution of CD-ROM and hard copies	ITTO																								
13 Preparation of the final report	Consulting service ITTO																								

Annex 4 Members and Terms and Reference of the Expert Meeting

Members of the Meeting

- 3 from producer countries
- 3 from consumer countries
- 3 from executing agencies of previous ITTO projects
- 1 from other relevant institution
- 1 from environmental NGO
- 1 from industrial *Association*

Terms of Reference of the Expert Meeting

- Decision of CD-ROM contents, required items and its format;
- Provision of future directions of activities

Annex 5 Terms of Reference of the consulting service

Terms of reference of the consulting service are:

- to identify and collect the information on Lesser Used Species in and outside of ITTO activities;
- to create the first draft of the format of the database;
- to revise the second draft taking into account of the comments from the member countries and relevant parties;
- to assist ITTO to organise the expert meeting and attend the meeting;
- to coordinate and arrange the copyrights of the references and literature on LUS;
- to develop the database system together with the sub-contractor;
- to translate the database into English together with the sub-contractor;
- to check and improve the database system and the text together with the sub-contractor;
- *to prepare and submit the progress reports and final report with input from ITTO; and*
- to have a responsibility with the technical and legal aspects of the project activities together with the ITTO secretariat.

Note of revision

Points of the comments by the Panel	Points revised
ITTO may explore the possibilities of information dissemination over the Internet.	<p>The best way of dissemination of the database through Internet might be a presentation on the homepage of the ITTO. However, volume of the database will be huge and it is not sure whether its maintenance would be within the capacity of the Secretariat at this stage.</p> <p>Therefore, upon the completion of the project, the dissemination strategy of this project through Internet should be considered in the context of the Council Decision 8(XXI). See 3.4 <i>"Intended situation after project completion"</i>.</p>
Given the possibility that some duplication of earlier work (CTFT, PROSPECT databases) may occur.	Since this project aims at compiling these previous works to provide a comprehensive and holistic database based on these previous work, duplication in the output of the project and contents of the previous work should not be a problem.
It was suggested that any output products (CD-ROM, publications) should mention previous work (to avoid problems of property rights).	Copyright issues related to previous ITTO work and other institution will be properly recognised and coordinated within Activity 2, which was originally Activity 6. See also 3.3 <i>"Other relevant aspects of the "pre-project situation"</i> .
The project should note the benefits that ITTO would gain by supporting activities mentioned in section 8.2 "Future operation and maintenance".	<p>Benefit for ITTO is to fulfil ITTO's mandate through providing update, reliable information on LUS available for all potential users in the integrated database which is convenient for search.</p> <p>See 8.2 <i>"Future operation and maintenance"</i>.</p>
Clarify the membership of the steering committee.	The steering committee is consisted of the consultant(s), ITTO and donor(s). It is stated originally in 8.1 <i>"Management Structure"</i> .
Indicate the agency responsible for submission of the progress reports.	They will be prepared by the project consultant, with input from the ITTO Secretariat. See 1. <i>"Arrangement for reporting"</i> .