

# INTERNATIONAL TROPICAL TIMBER ORGANIZATION

## ITTO

### PRE-PROJECT PROPOSAL

|                   |                                                                                                        |
|-------------------|--------------------------------------------------------------------------------------------------------|
| TITLE             | RESTORATION AND SUSTAINABLE MANAGEMENT OF GALLERY FORESTS IN THE MONO DELTA BIOSPHERE RESERVE IN BENIN |
| SERIAL NUMBER     | PPD 206/25 <b>Rev.1</b> (F)                                                                            |
| COMMITTEE         | REFORESTATION AND FOREST MANAGEMENT                                                                    |
| SUBMITTED BY      | GOVERNMENT OF THE REPUBLIC OF BENIN                                                                    |
| ORIGINAL LANGUAGE | FRENCH                                                                                                 |

#### SUMMARY

The Mono Delta Biosphere Reserve (MDBR) is part of the newly protected areas in Benin and is in line with the basic principles of the International Union for the Conservation of Nature (IUCN) governing the national process for establishing protected areas. The significance of the MDBR lies specifically in its exceptional biodiversity; the maintenance of forest connectivity in the western part of Southern Benin; the maintenance of ecological services, including hydrological services and carbon stocking; and the preservation of resources used by neighbouring communities. The MDBR is an integral part of the RAMSAR 1017 site. As such the MDBR is a wetland of international importance which is part of the Mono River basin at the border between Benin and Togo. Gallery forests (GF) with wildlife and flora species listed in the IUCN Red List are found in this ecological area. The area is now highly degraded as a result of anthropogenic pressures (human settlements, uncontrolled land clearing for farming, overharvesting of fish and resources, etc.). It is therefore urgent to establish a management and protection system for gallery forests. To address this issue, this pre-project was developed in order to collect information required to conduct an assessment of the state of forest galleries with a view to developing a full project proposal for the restoration and sustainable management of gallery forests. The main expected outputs are: (i) baseline information on the MDBR gallery is available; and (ii) a support project for the sustainable management of the MDBR is developed and submitted to ITTO. **The pre-project can serve as a model for the restoration of MDBR-neighbouring forests through the management of biosphere reserves, while ensuring a balance between conservation and socio-economic goals.**

EXECUTING AGENCY                      GENERAL DIRECTORATE OF WATER, FORESTS AND HUNTING  
(*DIRECTION GÉNÉRALE DES EAUX, FORÊTS ET CHASSE—DGEFC*)

COLLABORATING AGENCY              NATIONAL CENTER FOR THE MANAGEMENT OF WILDLIFE  
RESERVES (*CENTRE NATIONAL DE GESTION DES RÉSERVES DE  
FAUNE—CENAGREF*)

DURATION                                  10 MONTHS

APPROXIMATE STARTING  
DATE                                          TO BE DETERMINED

| BUDGET AND PROPOSED SOURCES<br>OF FUNDING | Source        | Contribution<br>in US\$ | Equivalent in<br>Local Currency |
|-------------------------------------------|---------------|-------------------------|---------------------------------|
|                                           | <b>ITTO</b>   | <b>69 440</b>           |                                 |
|                                           | BENIN (DGFEC) | 23 200                  |                                 |
|                                           | <b>TOTAL</b>  | <b>92 640</b>           |                                 |

## Table of contents

|           |                                                                                                                                             |                  |
|-----------|---------------------------------------------------------------------------------------------------------------------------------------------|------------------|
| <b>1.</b> | <b>PART 1: PRE-PROJECT CONTEXT</b>                                                                                                          | <b>4</b>         |
| 1.1.      | Origin                                                                                                                                      | 4                |
| 1.2.      | Pre-project relevance                                                                                                                       | 4                |
| 1.2.1.    | Conformity with ITTO objectives and priorities                                                                                              | 4                |
| 1.2.2.    | Relevance to submitting country's policies                                                                                                  | 5                |
| <b>2.</b> | <b>PART 2: RATIONALE</b>                                                                                                                    | <b>7</b>         |
| 2.1.      | Objectives                                                                                                                                  | 7                |
| 2.1.1.    | Development objective                                                                                                                       | 7                |
| 2.1.2.    | Specific objective                                                                                                                          | 7                |
| 2.2.      | Problem analysis                                                                                                                            | 7                |
| <b>3.</b> | <b>PART 3: DESCRIPTION OF PRE-PROJECT INTERVENTIONS</b>                                                                                     | <b>9</b>         |
| 3.1.      | Outputs                                                                                                                                     | 9                |
| 3.2.      | Activities                                                                                                                                  | 9                |
| 3.3.      | Approaches and methods                                                                                                                      | 9                |
| 3.3.1.    | Collecting baseline information and data on gallery forests in the MDBR area                                                                | 9                |
| 3.3.1.1.  | Inventory of gallery forest resources                                                                                                       | 9                |
| 3.3.1.2.  | Conducting stakeholder consultations and assessment of management capacities                                                                | 10               |
| 3.3.2.    | Developing a project for the restoration and sustainable management of gallery forests in the MDBR                                          | 10               |
| 3.4.      | Work plan                                                                                                                                   | 12               |
| 3.5.      | Master budget schedule                                                                                                                      | 13               |
| <b>4.</b> | <b>PART 4: IMPLEMENTATION ARRANGEMENTS</b>                                                                                                  | <b>18</b>        |
| 4.1.      | Executing Agency and organizational structure                                                                                               | 18               |
| 4.2.      | Monitoring and reporting                                                                                                                    | 18               |
|           | ANNEX 1: Profile of the Executing Agency                                                                                                    | 19               |
|           | ANNEX 2: CVs of key personnel provided by the Executing Agency                                                                              | 22               |
|           | ANNEX 3: Terms of Reference of personnel and consultants funded by ITTO                                                                     | 26               |
|           | <b>ANNEX 4: Assessment by the combined 60<sup>th</sup> and 61<sup>st</sup> Expert Panels</b>                                                | <b>26</b>        |
|           | <b><u>ANNEX 5: Overall assessment and specific recommendations by the combined 60th and 61st Expert Panels and resulting amendments</u></b> | <b><u>27</u></b> |

## ABBREVIATIONS AND ACRONYMS

|                    |                                                                                                                                                                                        |
|--------------------|----------------------------------------------------------------------------------------------------------------------------------------------------------------------------------------|
| <b><u>ACCB</u></b> | <b><u>Community Biodiversity Conservation Area (<i>Aire de Conservation communautaire de la biodiversité</i>)</u></b>                                                                  |
| <b><u>AMP</u></b>  | <b><u>Protected Marine Area</u></b>                                                                                                                                                    |
| CENAGREF           | National Centre for the Management of Wildlife Reserves ( <i>Centre National de Gestion des Réserves de Faune</i> )                                                                    |
| CHM                | : Clearing-House Mechanism (information exchange platform of the Convention on Biological Diversity)                                                                                   |
| DGEFC              | : General Directorate of Water, Forests and Hunting ( <i>Direction Générale des Eaux, Forêts et Chasse</i> )                                                                           |
| EA                 | : Executing agency                                                                                                                                                                     |
| GF                 | : Gallery Forest                                                                                                                                                                       |
| GIS                | : Geographic Information System                                                                                                                                                        |
| ha                 | : Hectare                                                                                                                                                                              |
| IGA                | : Income-Generating Activity                                                                                                                                                           |
| ITTA               | : International Tropical Timber Agreement                                                                                                                                              |
| ITTO               | : International Tropical Timber Organization                                                                                                                                           |
| IUCN               | : International Union for Nature Conservation                                                                                                                                          |
| MCVDD              | : Ministry of the Living Environment and Transportation in charge of Sustainable Development ( <i>Ministère du Cadre de Vie et des Transports en charge du Développement Durable</i> ) |
| MDBR               | : Mono Delta Biosphere Reserve ( <i>Réserve de Biosphère du Delta du Mono</i> )                                                                                                        |
| <b><u>NE</u></b>   | <b><u>National expert</u></b>                                                                                                                                                          |
| NGO                | : Non-governmental organization                                                                                                                                                        |
| PAE                | : Environmental Action Plan ( <i>Plan d'Action Environnemental</i> )                                                                                                                   |
| PAG                | : Government Action Plan (Plan action du Gouvernement)                                                                                                                                 |
| PAGEFCOM           | : Municipality Forest Management Support Project ( <i>Projet d'Appui à la Gestion des Forêts Communales</i> )                                                                          |
| PEFC               | : Water, Forests and Hunting Program ( <i>Programme Eaux, Forêts et Chasse</i> )                                                                                                       |
| PGFTR-FA           | : Forests and Adjacent Land Management Program ( <i>Programme de Gestion des Forêts et Terroirs Riverains</i> )                                                                        |
| PRI                | : Intensive Reforestation Program ( <i>Programme de Reboisement Intensif</i> )                                                                                                         |
| PSBE-GAZ           | : Project for the Substitution of Wood Energy by Gas ( <i>Projet de Substitution du Bois Énergie par le Gaz</i> )                                                                      |
| <b><u>PT</u></b>   | <b><u>Project Team</u></b>                                                                                                                                                             |
| SCRP               | : Growth strategy for Poverty Alleviation ( <i>Stratégie de Croissance pour la Réduction de la Pauvreté</i> )                                                                          |
| SH                 | : Stakeholders                                                                                                                                                                         |
| SPANB              | : National Strategy and Action Plan for Biodiversity Conservation ( <i>Stratégies et Plan d'Action National pour la Conservation de la Biodiversité</i> )                              |
| ToR                | : Terms of Reference                                                                                                                                                                   |

## PART 1. PRE-PROJECT CONTEXT

### 1.1. Origin

The Mono Delta Biosphere Reserve (MDBR) extends over a large area and is an integral part of the RAMSAR 1017 site. It is located in a wetland of international importance created by the Mono River which borders Benin and Togo. The MDBR is also a coastal marine area with strong potential for ecotourism (cultural and religious features) and is very popular with the populations of Porto-Novo, Cotonou, Ouidah and the neighbouring city of Lomé.

In addition, the MDBR features a diversity of landscapes which are not part of the current network of protected areas in Benin, in particular the coastal areas, the wetlands (Ramsar site 1017), the Guinean savannahs, the alluvial plains of the Mono River, the vertisol depression of Tchi, the peninsulas and islets of sacred forests. These different landscapes are characterized by ecosystems typical of the Dahomean furrow (Dahomey Gap) across plains, plateaus and marine and coastal environment of the Atlantic Ocean (mangroves, swamp meadows, swamp forests, riparian forests, etc.). The different ecosystems are home to a diversity of flora and fauna, some of which are threatened in Benin and Africa and internationally (mangrove tree species, sea turtles, African manatee, hippopotamus, Palearctic migratory birds, red-bellied monkey, pangolin, etc.). In other words, the MDBR harbours threatened ecosystems and endangered species of international importance and its conservation is therefore an urgent need.

The degradation of the MDBR ecosystems represents a major threat for biological diversity and the life of local communities highly dependent on their resources. Despite their socio-economic and ecological importance, these unique ecosystems have long been neglected. Available knowledge on these areas is very sketchy and scattered. The botanical, ecological, wildlife, socioeconomic and cartographic studies on gallery forests (GF) are very limited. This lack of information hinders all effective actions for the conservation and sustainable management of these resources. In order to address the situation, the pre-project plans to conduct an inventory of the potential of forest islands to collect baseline data with a view to developing an appropriate sustainable management program.

The DGEFC supports the participatory management of ecosystems and natural resources and will work in collaboration with municipal administrations, traditional authorities, and local stakeholders for the conservation and management of gallery forest ecosystems of the MDBR.

The pre-project was developed on the basis of survey data on the area. During this identification phase, consultation sessions were held with a number of stakeholder groups. Following these exchanges, local people expressed their desire to rehabilitate the gallery forests.

### 1.2. Pre-project relevance

#### 1.2.1. Conformity with ITTO objectives and priorities

The ITTO is one of the main international organizations concerned with the conservation and sustainable management of forests. This pre-project meets the ITTO objectives listed in ITTA, 2006, Article 1. These objectives are listed **in subparagraphs c, f, and j.**

**c. Contributing to sustainable development and to poverty alleviation—**This pre-project aims to contribute to the sustainable management of gallery forests and to improve the standard of living of local people. In practical terms, the pre-project will contribute to developing simplified plans for the development and participatory management of gallery forests, and will identify the opportunities for developing income-generating activities to reduce the pressure on gallery forests. The pre-project will also contribute to the training and capacity building of stakeholders involved directly in the sustainable management of those forests.

**f. Promoting and supporting research and development with a view to improving forest management and efficiency of wood utilization and the competitiveness of wood products relative to other materials, as well as increasing the capacity to conserve and enhance other forest values in timber producing tropical forests—** The pre-project will undertake awareness-raising activities on gallery forests located in the Ramsar 1017 site in South Benin. In addition, it will facilitate the establishment of a local network for the publication and dissemination of information on gallery forests. A diagnosis and zoning of gallery forests will be conducted, and a monitoring and evaluation system will be implemented managing the forest management series.

**j. Encouraging members to support and develop tropical timber reforestation, as well as rehabilitation and restoration of degraded forest land, with due regard for the interests of local communities dependent on forest resources**—The pre-project will consider the possibility of establishing buffer zones and of planting fast-growing species for fuelwood, medicinal plants and indigenous timber species desired by local communities.

In addition, the pre-project is in line with the *ITTO/IUCN Guidelines for the Conservation and Sustainable Use of Biodiversity in Tropical Timber Production Forests*, in particular Principle 9: Biodiversity considerations at the forest management unit level which states “An effective forest management planning process, in which economic, social and environmental objectives are balanced in accordance with societal needs and priorities, is essential for setting and achieving biodiversity conservation and sustainable use goals”.

### **1.2.2. Relevance with the submitting country's policies**

This pre-project is in line with the national and international policies of Benin.

#### **From a national perspective:**

The pre-project is in line with Benin's Forestry Policy for 2021-2030 whose vision is as follows: «By 2030, Benin will be a green country where natural and forest resources are managed in a sustained and sustainable manner to ensure biodiversity conservation, poverty alleviation, and addressing climate change and desertification».

The pre-project proposal is in accordance with Law No. 93-009 of July 2, 1993 establishing the forest regime in the Republic of Benin which stipulates that the forest management plan developed with the participation of local communities shall define the objectives assigned to forests and the means to achieve them: It is based on the principles of conservatory management and sustained production. The framework law on the environment in the Republic of Benin (Law N° 98-030 of February 1, 1999) stipulates in Articles 55 and 56 that forests, whether public or private, are part of the national heritage which shall be managed while keeping in mind environmental concerns so that the protective functions of forests are not undermined by economic, social or recreational uses. In addition, Article 56 states that forests shall be protected against all forms of degradation, pollution or destruction resulting in particular from overlogging, grazing and excessive clearings, as well as fire, burning, diseases or the introduction of unsuitable species.

The pre-project is in line with the priorities defined in the Government Action Plan whereby the Government undertakes to reverse the trend of forest cover degradation by strengthening the legislative and regulatory framework in this area; and improving the management of fragile systems (wetlands, coastlines and marginal ecosystems). In addition, the pre-project is in line with the Priority Action Program of the Growth Strategy for Poverty Alleviation (SCRIP) defining the National Program for the Sustainable Management of Natural Resources which aims, among other things, to: i) promote alternative energies in order to meet domestic energy needs in urban centres; ii) support municipalities and grassroots communities for the sustainable management of forests and nature reserves with high wildlife potential, through the process of developing and implementing participatory management plans; iii) ensure an equitable distribution of income derived from forest resources; v) strengthen the legislative and regulatory framework for the promotion of natural resources sustainable management by the municipalities and the private sector; vi) ensure the establishment and sustainable management of community biological reserves in wetlands, in particular Lakes Nokoué and Ahémé, and the valleys of the Ouémé and Mono Rivers; and vii) develop and implement a national reforestation program taking into account the specificities of the different forest categories and agro-ecological zones.

The pre-project is also in line with the sectoral strategies and policies of the Ministry of the Living Environment and Transportation in charge of Sustainable Development (MCVT), and in particular the National Strategy and Action Plan for Biodiversity Conservation (SPANB 2011-2020); the National Strategy for the Implementation of the United Nations Framework Convention on Climate Change; the Environmental Action Plan; and the forestry policy document which aims to contribute to the sustainable management of forest resources in wetlands with a view to improving local community income and living conditions.

#### **From an international perspective:**

Benin is a signatory to a number of international conventions and agreements, including the Convention on International Trade in Endangered Species of Wild Fauna and Flora (CITES); the RAMSAR Convention on Wetlands; the Convention on Biological Diversity (CBD), the United Nations Framework Convention on Climate Change (UNFCCC), and in particular the International Tropical Timber

Agreement (ITTA, 2006). Pre-project implementation will help to collect information on Ramsar sites 1017 and 1018, and to secure the necessary funds for undertaking actions in relation to sustainable forest management, efforts that will all contribute to fulfilling these international commitments.

## **PART 2. RATIONALE**

### **2.1 Objectives**

#### **2.1.1 Development objective**

To contribute to the conservation and sustainable management of the Mono Delta Biosphere Reserve by building the capacities of local people with a view to improving their living conditions.

#### **2.1.2 Specific objective**

To assess the potential of gallery forests in the Mono Delta Biosphere Reserve, with a view to developing a project proposal for their sustainable management.

### **2.2 Problem analysis**

Forests hold an important place in the life of local people in Benin, and essentially fulfil three functions, as follows:

- ecological function (protect water sources, protect soil against erosion, serve as habitat for animals and plants),
- religious function (sheltering deities, places of worship, rituals and other ceremonies),
- socio-economic and cultural function (timber harvesting, medicinal and food plants and other non-timber forest products, places of initiation, etc.).

The small size and the level of degradation in the Mono Delta gallery forests is an issue to ensure their management. Their dwindling size hinders the development of large-scale efforts.

Ecosystem degradation poses a significant threat to the livelihoods of communities. Following a brief investigation and consultations with stakeholders, it emerged that the key problem of Benin's wetlands is linked to the fact that forest resources are not sustainably managed. The main causes of this problem are threefold, namely:

1. Baseline information on gallery forests is lacking in Benin.

The lack of information on the potential of gallery forests is one of the causes of neglect and underestimation of their role in the functioning of the ecosystem.

2. Low capacity of gallery forest managers

The absence of regulations, consultation mechanisms and tools for the sustainable management of gallery forests has fostered the uncontrolled utilization of resources.

The above issues resulted in:

- The rapid degradation of ecosystems in gallery forests;
- The decrease in livelihoods for local communities.

The development of the pre-project is justified by the lack of information, which precludes directly developing a full project proposal. The lack of reliable and recent data on gallery forests combined with the unavailability of material and financial resources constitute major handicaps. To be able to develop a full project proposal requires the availability of reliable data from sound studies. The pre-project will also make it possible to define strategies to ensure consistency and generate synergies among all actions underway in gallery forests under the system of protected areas and the support project for forest management.

Ecosystem degradation is a major threat to the sustainability of community livelihoods. The investigations carried out revealed that the fundamental problem of the MDBR gallery forests is that they are not managed sustainably. This inevitably leads to their disappearance. The main causes of this problem are threefold:

- ✓ Overutilization of gallery forest resources;
- ✓ Low income generated from gallery forests;
- ✓ Lack of formal framework for protection gallery forests.

1. Overutilization of gallery forest resources

The high population density in southern Benin has had a negative impact on forest resources, both on the land and in the gallery forests. The need for timber products, which used to be met from local resources, has now spread to gallery forests. This situation has led to the overharvesting of available resources and consequently to the degradation of gallery forests. The existing potential of these forests is not known. The development of management tools (simple management development plans),

improved cultivation techniques and the development of reforestation will help to reduce pressure on gallery forests.

2. Low income generated from gallery forests

People living near gallery forests derive their main income from farming and forestry resources. Limited knowledge of the possibilities for developing gallery forest resources, and the lack of means for exploiting their potential, keep local populations in a vicious circle of poverty, resulting in increased degradation and deforestation of gallery forests.

3. Lack of formal framework for protection gallery forests

Unlike gazetted forests, there is no formal protection framework for gallery forests. As a result of the weakening of dignitaries' traditional powers, and despite their determination to preserve them, sacred forests are no longer able to withstand the various anthropic pressures they are subject to. In addition, the absence of consultation mechanisms between the stakeholders responsible for gallery forest management has also contributed to their degradation and destruction.

As a result, gallery forests are deteriorating and disappearing, with a loss of biodiversity and a reduction in the livelihoods of local communities.

Pre-project implementation will make it possible to resolve the above-mentioned issues in order to halt degradation in gallery forests and initiate their sustainable management.



## **PART 3. DESCRIPTION OF PRE-PROJECT INTERVENTIONS**

### **3.1 Outputs**

Two main outputs are expected from pre-project implementation.

**Output 1:** Baseline information on the potential of gallery forests in the Mono Delta Biosphere Reserve is available.

**Output 2:** A support project for the restoration and sustainable management of gallery forests in the Mono Delta Biosphere Reserve is developed and submitted to the ITTO for approval.

### **3.2 Activities**

The following activities will be implemented to achieve above outputs:

**Output 1:** Baseline information on the potential of gallery forests in the Mono Delta Biosphere Reserve is available

**Activity 1.1:** Establish and operationalize the pre-project steering unit;

**Activity 1.2:** Conduct an inventory survey of gallery forests in the Mono Delta Biosphere Reserve

**Activity 1.3:** Conduct a socio-economic survey of gallery forests in the Mono Delta Biosphere Reserve

**Activity 1.4:** Hold awareness-raising sessions for stakeholders;

**Activity 1.5:** Hold a feedback workshop for reporting survey findings to stakeholders;

**Output 2:** A project for the restoration and sustainable management of gallery forests in the Mono Delta Biosphere Reserve is developed and submitted to ITTO for approval

**Activity 2.1:** Develop a full project proposal for the sustainable management of gallery forests in the Mono Delta Biosphere Reserve;

**Activity 2.2:** Validate and submit the project proposal to the ITTO for funding;

### **3.3 Approaches and methods**

Pre-project implementation will be conducted by a multidisciplinary team made up of foresters, socio-economist geographer/cartographer and specialists in the integrated management of wetlands with the participation of local people. The specific surveys will involve consultations. The pre-project will be implemented in two main stages: Collect baseline data; and develop a sustainable management program for gallery forests. A select committee comprising dignitaries and municipal authorities will be established to provide guidance and participate in pre-project implementation and project development.

The studies to be carried out will be based on elements of the *ITTO Environmental and Social Management Guidelines* relevant for the socio-economic study to be carried out as part of pre-project implementation.

#### **3.3.1 Collecting baseline information and data on gallery forests in the MDBR area**

##### **3.3.1.1 Inventory of gallery forest resources**

Surveys will be conducted to inventory the different plant and animal species and all other important resources, their condition and their interests for the communities in targeted municipalities. Field visits and discussions with stakeholders will be held in order to inventory local resources and their uses, as well as to identify anthropogenic activities that have impacts, or none, on these ecosystems. Questionnaires will be used to discuss the potential for conservation and development in these areas.

The pre-project implementation team will also carry out a summary assessment of the current state of gallery forest resources. This assessment will include: (1) defining threats to forests; (2) biological resources in gallery forests (including threatened and rare species); and (3) the real contribution of GFs to the preservation of biodiversity and the livelihoods of local people.

Based on the information collected and desktop review, the pre-project team will establish a mapping of sites and GFs. The survey and mapping will include the geographic coordinates of targeted areas and information on the groups and communities/villages using these areas. The methodological approach used for mapping of forests in the targeted areas will be based on the Geographic Information System (GIS) combined with remote sensing. The first step will be to research and collect all planimetric documents relating to the study area. Existing maps, aerial photographs and satellite images (if feasible) will be documented. Secondly, chart bases (topography, infrastructure, hydrographic network, type of

soil, locality, administrative boundaries, etc.) will be recovered from existing maps. Digital or visual classifications will be made from satellite images or existing aerial photos to produce raw maps. The raw maps will then be validated after field verification using GPS. Additional information (land use, human activities, soil condition, state of vegetation, etc.) will be integrated and the development map of formations in the targeted areas will be produced. Mapping work will be performed using *Arcview* software.

### **3.3.1.2 Conducting stakeholder consultations and assessment of management capacities**

Several stakeholder consultations will be carried out to foster local and national ownership of actions with a view to consolidating community management in these areas. Target stakeholders will include representatives of the General Directorate of Water, Forests and Hunting, the Ministry of Agriculture, Livestock and Fisheries, municipal authorities, NGOs, civil society organizations, community leaders, religious and cultural leaders and neighbouring communities (women and young people in particular). A detailed analysis of stakeholders will be carried out to define their respective roles.

Collected data will be used to analyse the conditions conducive to resource restoration and improved use. The main hurdles hindering the actions proposed by the pre-project will be addressed as well as the potential obstacles to cooperation between involved groups.

Field surveys will be carried out based on participatory evaluation groups. Surveys will collect information on:

- population data in the pre-project area;
- users of products from the pre-project area and all other development partners involved in the conservation, restoration and sustainable management of gallery forest biodiversity in the area;
- main economic activities in the area, and needs and income of local communities;
- conditions of access to land ownership and land-use rights for people as well as their involvement in natural resource use-related activities, while taking into account gender issues;
- techniques for resource utilization, production, restoration and development, including existing traditional development and management techniques;
- income-generating activities (IGAs) that could be carried out in combination with the conservation and sustainable management of natural resources while proposing concrete actions for capacity building;
- perception of communities towards forest conservation and environmental protection, while testing their acceptance towards the introduction of innovations in the sustainable management of gallery forests.

The activity aimed at stakeholder involvement will yield the following results:

- Matrix of stakeholders;
- Plan for stakeholder involvement and capacity building;
- Identification of income-generating activities to be implemented, and of resources of economic and cultural importance which could be sustainably harvested and integrated into conservation activities.

The capacity of local committees and managers will be analysed to determine areas where support will be required to strengthen sustainable participation in community-based management.

### **3.3.2 Developing a project for the restoration and sustainable management of gallery forests in the MDBR**

The development of a project for the rehabilitation and sustainable management of GFs will therefore depend on the benefits that respective local communities derive from these ecosystems and on the potential importance at the national level of conserving such environments. An awareness-raising and information meeting will therefore be held with the communities in targeted areas where urgent actions for ecosystem conservation and development are needed. The people will describe the benefits of these ecosystems in their respective environments (interests, causes and consequences of their degradation, and solutions they recommend). A consensus will be found together for their sustainable development.

Project costs will be evaluated on the basis of above-mentioned steps, and its monitoring and evaluation plan defined. It will include the analysis of:

- Benin's wetland management system and its applicability to the management of gallery forests and buffer zones.

- Obstacles to the implementation of effective management of gallery forests in the Mono Delta Reserve in Benin
- Costs of expected results and outputs, sources of co-funding;
- Desired local, national and global environmental benefits;
- Comprehensive risk assessment to be conducted and planned mitigating measures. Climate change will likely be included in the risk analysis (and analysis will be based on current data).
- Costs-benefits to identify more efficient project alternatives.
- Social, institutional, economic and financial sustainability of planned project activities.
- Project monitoring and evaluation plan, with baseline levels, impact indicators and objectives required to monitor the progress and effectiveness of the project.

### 3.4 Work plan

| Outputs/Activities                                                                                                                                         | Party in charge/<br>Collaborator | MONTH |   |   |   |   |   |   |   |   |    |
|------------------------------------------------------------------------------------------------------------------------------------------------------------|----------------------------------|-------|---|---|---|---|---|---|---|---|----|
|                                                                                                                                                            |                                  | 1     | 2 | 3 | 4 | 5 | 6 | 7 | 8 | 9 | 10 |
| Output 1: Baseline information on the potential of gallery forests in the Mono Delta Biosphere Reserve is available                                        |                                  |       |   |   |   |   |   |   |   |   |    |
| Activity 1.1: Establish and operationalize the pre-project steering unit                                                                                   | DGEFC/<br><u>CENAGREF</u>        |       |   |   |   |   |   |   |   |   |    |
| Activity 1.2: Conduct an inventory survey of gallery forests in the Mono Delta Biosphere Reserve                                                           | PT/DGEFC/SH                      |       |   |   |   |   |   |   |   |   |    |
| Activity 1.3: Conduct a socio-economic survey of gallery forests in the Mono Delta Biosphere Reserve                                                       | PT/DGEFC/SH                      |       |   |   |   |   |   |   |   |   |    |
| Activity 1.4: Hold awareness-raising sessions for stakeholders                                                                                             | PT/DGEFC                         |       |   |   |   |   |   |   |   |   |    |
| Activity 1.5: Hold feedback workshop for reporting survey findings to stakeholders                                                                         | PT/DGEFC/<br><u>CENAGREF</u>     |       |   |   |   |   |   |   |   |   |    |
| Output 2: A project for the restoration and sustainable management of the Mono Delta Biosphere Reserve is developed and submitted to the ITTO for approval |                                  |       |   |   |   |   |   |   |   |   |    |
| Activity 2.1: Develop a full project proposal for the sustainable management of gallery forests in the Mono Delta Biosphere Reserve                        | PT/DGEFC/<br><u>CENAGREF</u>     |       |   |   |   |   |   |   |   |   |    |
| Activity 2.2: Validate and submit the project proposal to the ITTO for funding                                                                             | PT/DGEFC/<br><u>CENAGREF</u>     |       |   |   |   |   |   |   |   |   |    |
| Activity 2.3: Produce the pre-project final report                                                                                                         | DGEFC                            |       |   |   |   |   |   |   |   |   |    |

**CENAGREF: National Centre for the Management of Wildlife Reserves**

**DGEFC:** General Directorate of Water, Forests and Hunting

**PT:** Project Team

**SH:** Stakeholders

### 3.5 Master budget schedule

The pre-project budget is shown in the master budget schedule below. It provides a breakdown of the costs of the activities, indicating the quantities, unit costs, the total and distribution per funding source.

| Outputs/<br>Activities | Description                                                                                                                                                                  | Budget<br>component | Quantity         | Unit            | Unit<br>cost<br>(\$EU) | Total<br>cost<br>(\$EU) | ITTO               | EA    |
|------------------------|------------------------------------------------------------------------------------------------------------------------------------------------------------------------------|---------------------|------------------|-----------------|------------------------|-------------------------|--------------------|-------|
| <b>Output 1</b>        | Baseline information on the potential of gallery forests in the Mono Delta Biosphere Reserve is available                                                                    |                     |                  |                 |                        |                         |                    |       |
| <b>A 1.1:</b>          | Establish and operationalize the pre-project steering unit                                                                                                                   |                     |                  |                 |                        |                         |                    |       |
|                        | 1 Pre-project coordinator                                                                                                                                                    | 11                  | 10               | p-m             | 1500                   | 15000                   |                    | 15000 |
|                        | 1 Pre-Project monitoring and evaluation assistant                                                                                                                            | 12.1                | 10               | p-m             | 1000                   | 10000                   | 10000              |       |
|                        | 1 Administrative & finance secretary                                                                                                                                         | 12.3                | 10               | p-m             | 750                    | 7500                    | 7500               |       |
|                        | 1 Driver for courier vehicle                                                                                                                                                 | 12.4                | 10               | p-m             | 250                    | 2000                    |                    | 2000  |
|                        | <b><u>Duty travel</u></b>                                                                                                                                                    | <b><u>31</u></b>    | <b><u>10</u></b> | <b><u>m</u></b> | <b><u>350</u></b>      | <b><u>3500</u></b>      | <b><u>3500</u></b> |       |
|                        | Office supplies                                                                                                                                                              | 54                  | 10               | m               | 250                    | 2500                    | 2500               |       |
|                        | Networks and utilities                                                                                                                                                       | 53                  | 10               | m               | 150                    | 1500                    |                    | 1500  |
|                        | Office rental                                                                                                                                                                | 62                  | 10               | m               | 300                    | 3000                    |                    | 3000  |
| <b>A 1.2</b>           | Conduct an inventory survey of gallery forests in the Mono Delta Biosphere Reserve                                                                                           |                     |                  |                 |                        |                         |                    |       |
|                        | National consultant in forest inventory                                                                                                                                      | 20                  | 4                | m               | 3000                   | 12000                   | 12000              |       |
| <b>A 1.3</b>           | Conduct a socio-economic survey of gallery forests in the Mono Delta Biosphere Reserve                                                                                       |                     |                  |                 |                        |                         |                    |       |
|                        | National consultant in socio-economics                                                                                                                                       | 21                  | 2.5              | m               | 3000                   | 7500                    | 7500               |       |
| <b>A 1.4</b>           | Hold awareness-raising sessions for stakeholders                                                                                                                             |                     |                  |                 |                        |                         |                    |       |
|                        | 10 day-Mission, 4 participants                                                                                                                                               | 30                  | 40               | p-d             | 80                     | 3200                    | 3200               |       |
| <b>A 1.5</b>           | Validate conducted surveys                                                                                                                                                   |                     |                  |                 |                        |                         |                    |       |
|                        | Hold a feedback workshop for reporting survey findings to stakeholders (30 participants x 1 day)                                                                             | 63                  | 50               | p-d             | 50                     | 2400                    | 2400               |       |
| <b>Output 2:</b>       | A project proposal for the restoration and sustainable management of gallery forests in the Mono Delta Biosphere Reserve is developed and submitted to the ITTO for approval |                     |                  |                 |                        |                         |                    |       |
| <b>A .2.1</b>          | Submit a project proposal on gallery forests to ITTO for funding                                                                                                             |                     |                  |                 |                        |                         |                    |       |
|                        | 1 Expert for project proposal development                                                                                                                                    | 24                  | 2                | p-m             | 3000                   | 6000                    | 6000               |       |
|                        | Project validation workshop for stakeholders (30 participants)                                                                                                               | 63                  | 80               | p-d             | 30                     | 2400                    | 2400               |       |
|                        | Audit                                                                                                                                                                        | 64.                 |                  |                 |                        | 3000                    | 3000               |       |
|                        | <b>ITTO monitoring and review costs</b>                                                                                                                                      | <b>81</b>           |                  |                 |                        | <b>3000</b>             | <b>3000</b>        |       |
|                        | ITTO support program costs (12% on 10-82 above items)                                                                                                                        | 80                  |                  |                 |                        | <b>7440</b>             | <b>7440</b>        |       |

EA = Executing Agency

**Consolidated budget by component (US\$)**

| Budget component | Description                                                                            | Total        | Month       |              |              |             |             |             |             |             |             |             |
|------------------|----------------------------------------------------------------------------------------|--------------|-------------|--------------|--------------|-------------|-------------|-------------|-------------|-------------|-------------|-------------|
|                  |                                                                                        |              | 1           | 2            | 3            | 4           | 5           | 6           | 7           | 8           | 9           | 10          |
| 10               | Personnel                                                                              |              |             |              |              |             |             |             |             |             |             |             |
|                  | 11.1 Pre-project coordinator                                                           | 15000        | 1500        | 1500         | 1500         | 1500        | 1500        | 1500        | 1500        | 1500        | 1500        | 1500        |
|                  | 12.1 Project monitoring and evaluation assistant                                       | 10000        | 1000        | 1000         | 1000         | 1000        | 1000        | 1000        | 1000        | 1000        | 1000        | 1000        |
|                  | 12.3 Administrative & finance secretary                                                | 7500         | 750         | 750          | 750          | 750         | 750         | 750         | 750         | 750         | 750         | 750         |
|                  | 12.4. Driver for courier vehicle                                                       | 4000         | 400         | 400          | 400          | 400         | 400         | 400         | 400         | 400         | 400         | 400         |
|                  | <b>19. Component total</b>                                                             | <b>36500</b> | <b>3650</b> | <b>3650</b>  | <b>3650</b>  | <b>3650</b> | <b>3650</b> | <b>3650</b> | <b>3650</b> | <b>3650</b> | <b>3650</b> | <b>3650</b> |
| 20               | <i>Subcontracting</i>                                                                  |              |             |              |              |             |             |             |             |             |             |             |
|                  | 21. Conduct an inventory survey of gallery forests in the Mono Delta Biosphere Reserve | 10000        |             | 10000        |              |             |             |             |             |             |             |             |
|                  | 22. Conduct a socio-economic survey of gallery forests in the MDBR                     | 7500         |             | 3000         | 3000         | 1500        |             |             |             |             |             |             |
|                  | 23. Conduct awareness-raising sessions for stakeholders                                | 3200         | 1600        | 1600         |              |             |             |             |             |             |             |             |
|                  | 24. Develop the project document                                                       | 7500         |             |              |              |             |             | 3750        | 3750        |             |             |             |
|                  | <b>29. Component total</b>                                                             | <b>45200</b> | <b>4600</b> | <b>13600</b> | <b>12000</b> | <b>7500</b> | <b>0</b>    | <b>3750</b> | <b>3750</b> | <b>0</b>    | <b>0</b>    | <b>0</b>    |
| <b>30</b>        | <b><i>Duty travel</i></b>                                                              | -            | -           | -            | -            | -           | -           | -           | -           | -           | -           | -           |
| -                | <b>31. Travel costs</b>                                                                | <b>3500</b>  | <b>350</b>  | <b>350</b>   | <b>350</b>   | <b>350</b>  | <b>350</b>  | <b>350</b>  | <b>350</b>  | <b>350</b>  | <b>350</b>  | <b>350</b>  |
| -                | <b>39. Component total</b>                                                             | <b>3500</b>  | <b>350</b>  | <b>350</b>   | <b>350</b>   | <b>350</b>  | <b>350</b>  | <b>350</b>  | <b>350</b>  | <b>350</b>  | <b>350</b>  | <b>350</b>  |
| 50               | <i>Consumable items</i>                                                                |              |             |              |              |             |             |             |             |             |             |             |
|                  | 53. Networks and utilities                                                             | 1500         | 150         | 150          | 150          | 150         | 150         | 150         | 150         | 150         | 150         | 150         |
|                  | 54. Office supplies                                                                    | 2000         | 2000        |              |              |             |             |             |             |             |             |             |

| Budget component | Description                                                         | Total | Month |     |     |     |      |     |     |      |     |      |
|------------------|---------------------------------------------------------------------|-------|-------|-----|-----|-----|------|-----|-----|------|-----|------|
|                  |                                                                     |       | 1     | 2   | 3   | 4   | 5    | 6   | 7   | 8    | 9   | 10   |
|                  | 59. Component total                                                 | 7000  | 4300  | 300 | 300 | 300 | 300  | 300 | 300 | 300  | 300 | 300  |
| 60.              | Miscellaneous                                                       |       |       |     |     |     |      |     |     |      |     |      |
|                  | 61. Feedback workshop for reporting survey findings to stakeholders | 2400  |       |     |     |     | 2400 |     |     |      |     |      |
|                  | 62. Office rental                                                   | 3000  | 300   | 300 | 300 | 300 | 300  | 300 | 300 | 300  | 300 | 300  |
|                  | 63. Project validation workshop (30 participants)                   | 2400  |       |     |     |     |      |     |     | 2400 |     |      |
|                  | 64. Audit                                                           | 3000  |       |     |     |     |      |     |     |      |     | 3000 |
|                  | 69. Component total                                                 | 13500 | 300   | 300 | 300 | 300 | 2800 | 300 | 300 | 5300 | 300 | 3300 |
| 80               | Project monitoring and administration                               |       |       |     |     |     |      |     |     |      |     |      |
|                  | 81. Monitoring and review costs                                     | 3000  |       |     |     |     |      |     |     |      |     |      |
|                  | Subtotal (10-82)                                                    | 62000 |       |     |     |     |      |     |     |      |     |      |
|                  | ITTO support program costs (12% on 10-82 above items)               | 7440  |       |     |     |     |      |     |     |      |     |      |
|                  | Component total                                                     | 10440 |       |     |     |     |      |     |     |      |     |      |
| 100              | GRAND TOTAL                                                         |       |       |     |     |     |      |     |     |      |     |      |

## Budget contribution - ITTO

| Budget component | Description                                                                                | Total        |
|------------------|--------------------------------------------------------------------------------------------|--------------|
| 10.              | Personnel                                                                                  |              |
|                  | 12. Project monitoring and evaluation assistant                                            | 10000        |
|                  | 12.3 Administrative & finance secretary                                                    | 7500         |
|                  | 19. Component total                                                                        | 17500        |
| 20.              | <i>Subcontracting</i>                                                                      |              |
|                  | 21. Conduct an inventory survey of gallery forests in the Mono Delta Biosphere Reserve     | 10000        |
|                  | 22. Conduct a socio-economic survey of gallery forests in the Mono Delta Biosphere Reserve | 7500         |
|                  | 23. Conduct awareness-raising sessions for stakeholders                                    | 3200         |
|                  | 24. Develop project document                                                               | 7500         |
|                  | 29. Component total                                                                        | 28200        |
| <b>30.</b>       | <b><i>Duty travel</i></b>                                                                  | -            |
| -                | <b>31. Travel costs</b>                                                                    | <b>3500</b>  |
|                  | <b>39. Component total</b>                                                                 | <b>3500</b>  |
| 50.              | <i>Consumable items</i>                                                                    |              |
|                  | 54. Office supplies                                                                        | 2000         |
|                  | 59. Component total                                                                        | 2000         |
| 60.              | <i>Miscellaneous</i>                                                                       |              |
|                  | 61. Feedback workshop for reporting survey findings to stakeholders                        | 2400         |
|                  | 63. Project validation workshop (30 participants)                                          | 2400         |
|                  | 64. Audit                                                                                  | 3000         |
|                  | 69. Component total                                                                        | 7800         |
| 80.              | <i>Project monitoring and administration</i>                                               |              |
|                  | 81. Monitoring and review costs                                                            | 3000         |
|                  | Subtotal (10-82)                                                                           | <b>62000</b> |
|                  | ITTO support programme costs (12% on 10-82 above items)                                    | <b>7440</b>  |
|                  | Subtotal                                                                                   | <b>10440</b> |
| <b>100.</b>      | <b>GRAND TOTAL</b>                                                                         | <b>69440</b> |



### Budget contribution – Executing Agency

| Budget component | Description                      | Total        |
|------------------|----------------------------------|--------------|
| 10.              | Personnel                        |              |
|                  | 11.1 Project coordinator         | 15000        |
|                  | 12.3. Driver for courier vehicle | 4000         |
|                  | 19. Component total              | 19000        |
| 50.              | <i>Consumable items</i>          |              |
|                  | 53. Networks and utilities       | 1200         |
|                  | 59. Component total              | 1200         |
| 60.              | <i>Miscellaneous</i>             |              |
|                  | 62. Office rental                | 3000         |
|                  | 69. Component total              | 3000         |
| <b>100.</b>      | <b>GRAND TOTAL</b>               | <b>23200</b> |

## **PART 4. IMPLEMENTATION ARRANGEMENTS**

### **4.1 Executing agency and organizational structure**

The General Directorate of Water, Forests and Hunting (DGEFC) is the national institution responsible for the sustainable management of forest resources. It will serve as the pre-project Executing Agency. The DGEFC collects and manages related statistical information. The DGEFC has developed and managed several projects and programs that support its sovereign missions. The DGEFC is supported by several programs/projects and Centres and Offices in the forestry sector.

The Executing Agency will work with all identified partners. The latter will contribute to ensuring successful pre-project implementation. Some of the partners are included in the pre-project's organizational chart.

The DGEFC will make the necessary office facilities and amenities available to the pre-project. It will also make all the forestry officers available to the project to facilitate data collection activities at the level of inspectorates.

#### **Roles and duties of the Collaborating Agency (CENAGREF)**

**The CENAGREF will assume various roles and duties in connection with the pre-project, including participation in and validation of studies to be carried out. In addition, the CENAGREF will be involved in the Pre-Project Steering Committee.**

### **4.2 Monitoring and reporting**

#### **Monitoring and evaluation**

To ensure appropriate pre-project monitoring, a technical support Committee will be established and will be in charge of evaluating reports produced by consultants and the national expert. Meetings of the Technical Support Committee will be convened prior to submitting preliminary reports and meeting minutes will be drafted. The technical support committee will be comprised of:

- one representative of the DGEFC, which serves as the government Focal Point with ITTO (Committee Chairperson);
- **one representative of the CENAGREF;**
- one representative of the Ministry of Agriculture, Husbandry and Fisheries;
- two representatives of the Municipal Authorities; and
- **three** representatives nominated by the gallery forest-neighbouring communities.

#### **Reporting**

The Coordinator will prepare the timetable and progress reports for submission to the ITTO with copies to the DGEFC. Two technical reports will be produced for ITTO, including:

- Progress reports (inception report and mid-term report) will be produced in accordance with ITTO procedures;
- The Pre-project completion report in accordance with the ITTO guidelines, including findings and recommendations. The completion report will also be followed by the pre-project financial audit report.

## ANNEX 1: Profile of the executing agency

Name: General Directorate of Water, Forests and Hunting (*Direction Générale des Eaux, Forêts et Chasse—DGEFC*)

Postal Address: BP: 393 COTONOU (Rep. of BENIN)

Tel.: (229) 21-33-06-62, E-mail: [foretsbenin@yahoo.fr](mailto:foretsbenin@yahoo.fr); [lokossouo@yahoo.fr](mailto:lokossouo@yahoo.fr), [staulysse@gmail.com](mailto:staulysse@gmail.com)

Created by Order No. 2428 of the Governor of French West Africa (AOF) of 23 July 1938, the Directorate of Water, Forests and Hunting became the Directorate General of Forests and Natural Resources (DGFRN) in 2006 by Decree No. 2006-460 of 7 September 2006 establishing Responsibilities, Organization and Operating of the Ministry of Environment and Nature Protection (MEPN), and Directorate General for Water, Forests and Hunting (DGCFE) in June 2015 by Act N° 2015-20 of 19 June 2015 establishing the special status of personnel of public security forces and similar. Its main mission is to ensure the protection, production and enhancement of forest resources (soil, water, flora and fauna) in order to make the forest sector a source of social value and added value to the national economy. At institutional level, the DGEFC ensures the implementation of the national forest policy within the framework of the Program for the Endorsement of Forest Certification (PEFC), which is one of the five major programs of the Ministry of Forestry and the Ministry of the Living Environment and Sustainable Development (MCVDD). As such, it is responsible for exclusive and non-exclusive missions.

Exclusive assignments include:







- development and monitoring of the implementation of forest sector development policies, strategies and programs;
- coordination, planning and monitoring & evaluation within the forest sector;
- developing and monitoring the implementation of statutory and regulatory legislation in the field of forests and wildlife;
- preparation of development plans for the state gazetted forest estate;
- validation of management plans and other tools for the management of protected areas;
- administering and monitoring the implementation of development plans for the state gazetted forests;
- guidance, definition, monitoring and control of public and private stakeholders involved in natural resource management and their roles;
- following-up ratified international and regional forest and wildlife conventions and agreements;
- leading an intersectoral consensus strategy involving all stakeholders in the forestry sector;
- organization and enforcement of the forest police;
- development and monitoring of the implementation of a sustainable financing strategy for the forest sector;
- collection of taxes and charges associated with natural resources in accordance with the provisions of the financial laws and other statutory and regulatory legislation in force;
- execution of all missions related to the specificity of the Water, Forest and Hunting personnel as a component of Forces in charge of Public Safety and Related Forces.

Non-exclusive assignments include:

- implementation of forest sector development policies, strategies and programs;
- establishing, monitoring, preserving and restoring the state protected estate;

- promotion of new and promising timber and non-timber forest product industries;
- assistance to individuals and local authorities in the development and implementation of management plans in the fields of flora and fauna;
- participation in the implementation of works related to water and soil conservation and management;
- implementation of a communication strategy for promoting a change of behaviour in relation to all other authorized structures;
- implementation of ratified international conventions and agreements on forests and wildlife;
- implementation of the sustainable financing strategy for the forest sector;
- promotion of reforestation and advisory support to local authorities and private actors in the areas of sustainable forest, wildlife and natural resource management.

At central level, the DGEFC is based on a General Secretariat, a General Inspectorate of Forest Services (IGSF), a DGEFC Cabinet and six Technical Divisions, namely:

-  Directorate for Stewardship, Materiel and Equipment Services (DSIME);
-  Directorate for Organization and Personnel Training (DOFP);
-  Directorate for Reforestation and Forest Management (DRAF);
-  Directorate for Conservation and Promotion of Natural Resources (DCPRN);
-  Forest Logging Control and Litigation Policy Directorate (DPCEFC);
-  Directorate for Programming and Monitoring-Evaluation (DPSE).

The DGEFC has a staff of 592 water, forestry and hunting officers (paramilitaries) and 178 civil servants at central level, distributed across decentralized structures, government-controlled Projects/Programs, Centres and Offices.

## Annex 1b: Profile of Collaborating Agency (National Centre for the Management of Wildlife Reserves—CENAGREF)

The National Centre for the Management of Wildlife Reserves (CENAGREF) will serve as the pre-project collaborating agency. The CENAGREF is a government institution of a cultural and scientific nature with legal personality and operating under the supervision of the MCVT. The CENAGREF was established in 1996 by Decree No. 96-73 of 2 April 1996 and is currently governed by Decree No. 2022-458 of 27 July 2022 establishing its statutes, and by Law No. 2020-20 of 2 September 2020 governing the establishment, organisation and operation of government undertakings in the Republic of Benin.

### CENAGREF Missions

The conservation and rational management of areas under specific measures for the protection and management of wildlife, including, in particular, strict nature reserves, national parks, wildlife reserves, special reserves or wildlife sanctuaries, hunting areas and their buffer zones, including marine protected areas.

The CENAGREF is a government institution responsible for the conservation and rational management of areas under special wildlife protection and management measures, including, in particular, strict nature reserves, national parks, wildlife reserves, special reserves or wildlife sanctuaries, hunting areas and their buffer zones, including marine protected areas.

### CENAGREF mandate

1. Developing and implementing national strategies for the planning and management of wildlife and their habitat
2. Implementing existing law and regulatory instruments relating to wildlife and their habitat
3. Implementing national policy for the development of protected areas, in accordance with the objectives identified in the government's action programme
4. Coordinating efforts by government and private entities and institutions, NGOs, and PTFs involved in the management of conservation projects
5. Developing and maintaining the national network of protected areas, including MPAs and community or municipal protected areas
6. Conducting technical studies for improving understanding and development of Protected Areas
7. Establishing partnerships with laboratories, research centres and universities for improving knowledge of wildlife and its habitats in protected areas
8. Providing necessary technical support to municipalities and local communities for the establishment/management of Community Wildlife Reserves
9. Providing necessary technical support to private individuals for the promotion of livestock and wildlife ranges
10. Promoting wildlife breeding with the support of local communities and relevant specialized institutions based on proven techniques

### Key challenges

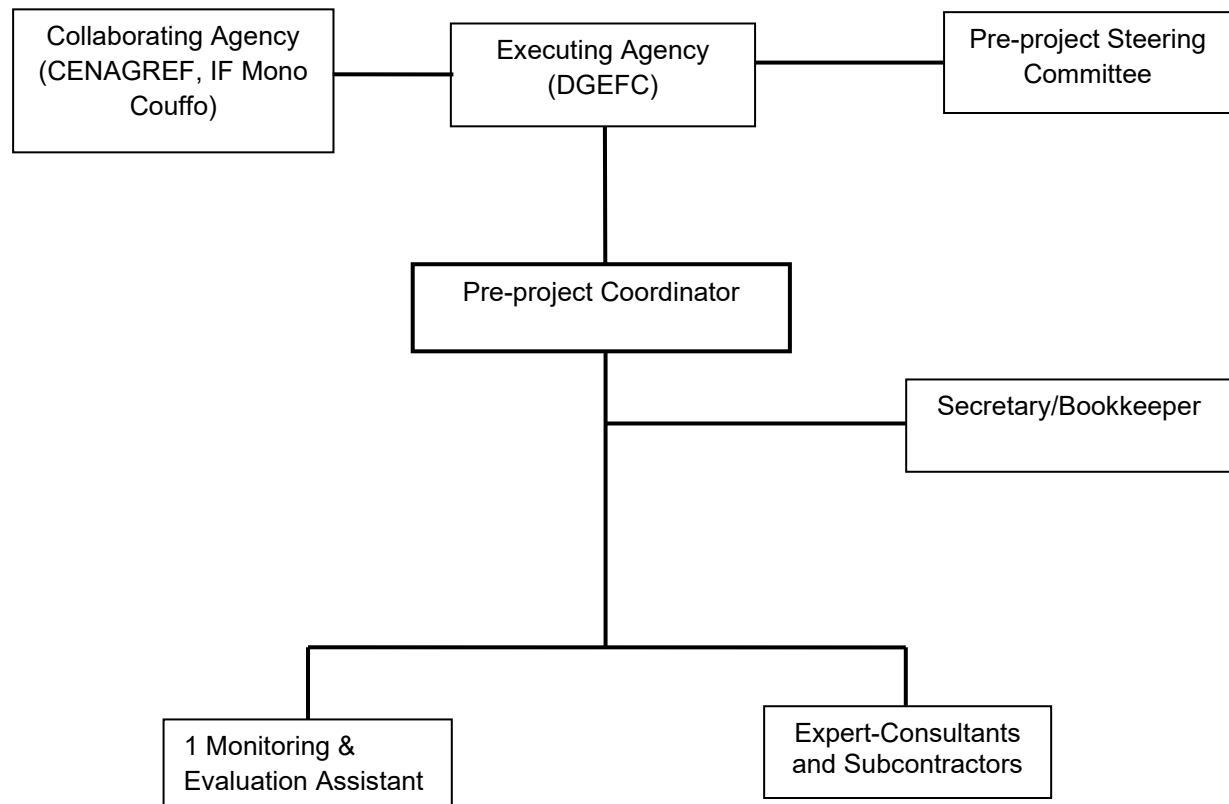
#### Key challenges include:

- Ensuring enhanced protection of wildlife reserves;
- Strong commitment from personnel and institutional support;
- Ensuring effective governance and optimal coordination of conservation efforts;
- Ensuring financial autonomy and sustainability of conservation efforts.

#### Operation areas:

CENAGREF operation areas include W National Park; Pendjari, Wari-Marô Forest Complex; Kouffé Mountains; PAGEFCOM wildlife ranges; the two MPAs; the three Biosphere Reserves; and the ACCBs.

**Pre-project organization chart**



## **ANNEX 2. CVs of key personnel provided by the Executing Agency**

### **CV of Officer responsible for pre-project monitoring and evaluation**

1. **Surname:** LOKOSSOU
2. **Name:** Achille Orphée
3. **Birth date:** 10/12/1970
4. **Adresse :** [lokossouo@yahoo.fr](mailto:lokossouo@yahoo.fr)
5. **Téléphone :** +229 0195450724
6. **Nationality:** Benin
7. **Diplomas:**

| <b>Institution [ Starting/End]</b>                                                                               | <b>Diploma(s):</b>                                                                    |
|------------------------------------------------------------------------------------------------------------------|---------------------------------------------------------------------------------------|
| Faculty of Agronomics (FSA), University of Abomey-Calavi (UAC), 2011-2012                                        | Professional Master's Degree in Natural Resource and Biodiversity Management          |
| Faculty of Sciences, University of Lomé, Togo, 2005-2006                                                         | Master's degree (DESS) in Developmental Biology                                       |
| Faculty of Languages, Humanities, Arts and Social Sciences (FLASH), University of Abomey-Calavi (UAC), 2004-2005 | Master's degree (DEA) in Environment Management, Major in Environment and Development |
| College of Polytechnics (CPU), National University of Benin (UNB)                                                | Operations Engineer's Degree in Environment Management and Protection                 |

8. **Language proficiency:**

| <b>Language</b> | <b>Read</b> | <b>Spoken</b> | <b>Written</b> |
|-----------------|-------------|---------------|----------------|
| French          | Very good   | Very good     | Very good      |
| English         | Good        | Good          | Good           |

9. **Other skills:** (for ex., computer skills, etc.)

- Word processing: Windows (Word, Excel, Powerpoint) software;
- Training in data analysis R software;
- Database management and GIS.

10. **Positions held and main functions in the Forestry Administration**

#### **2024-2025: Forestry Inspection Deputy Chief, Mono and Couffo Prefectures:**

2014-2019: Head of Policy, Research, and Agreement and Convention Monitoring

August 2016-July 2019: Focal Point and Country Operator for Project PD 754/14 (F) "Rehabilitation and Sustainable Management of Sacred Forests in RAMSAR Sites 1017 and 1018 in Benin", funded by the International Tropical Timber Organization (ITTO)

August 2013-December 2016: National Project Coordinator for project PD 678/12 Rev.1 (M) "Establishment of a National Forest Statistics Information and Management System in Benin"

May 2012-2014: Head of Division responsible for Monitoring International Agreements and Conventions under the supervision of the DGEFC

March 2016-August 2017: National Coordinator for outreach project aimed at combating elephant poaching in the W Transfrontier Biosphere Reserve (PSLAB/RBTW), funded by African Elephant Funds

November 2012-December 2013: National Coordinator for the Study of Ivory and Ivory Product Trade Routes between Benin, Burkina Faso, Niger and Togo.

**LOKOSSOU A. Orphée**

### ANNEX 3. Terms of reference of personnel and consultants funded by ITTO

| Experts to be provided                                                           | Tasks and Responsibilities                                                                                                                                                                                                                                                                                                                                                                                                                                                                                                                                                                                                                                                                                                                                                                                                                                                                                                                                                                                                                                                                                                                                                                                                                                                                                                                                                                                                                                                                                                                                                                                                                                                                                                                                                                                                                                                                                                                                                                                                                                                                                                                                                                                                       |
|----------------------------------------------------------------------------------|----------------------------------------------------------------------------------------------------------------------------------------------------------------------------------------------------------------------------------------------------------------------------------------------------------------------------------------------------------------------------------------------------------------------------------------------------------------------------------------------------------------------------------------------------------------------------------------------------------------------------------------------------------------------------------------------------------------------------------------------------------------------------------------------------------------------------------------------------------------------------------------------------------------------------------------------------------------------------------------------------------------------------------------------------------------------------------------------------------------------------------------------------------------------------------------------------------------------------------------------------------------------------------------------------------------------------------------------------------------------------------------------------------------------------------------------------------------------------------------------------------------------------------------------------------------------------------------------------------------------------------------------------------------------------------------------------------------------------------------------------------------------------------------------------------------------------------------------------------------------------------------------------------------------------------------------------------------------------------------------------------------------------------------------------------------------------------------------------------------------------------------------------------------------------------------------------------------------------------|
| Pre-Project assistant responsible for monitoring & evaluation                    | <ul style="list-style-type: none"> <li>• Assist Coordinator with pre-project management tasks;</li> <li>• Produce detailed pre-project plan;</li> <li>• Conduct the monitoring/evaluation of pre-project implementation;</li> <li>• Draft the Terms of Reference and supervise the procurement process;</li> <li>• Monitor the conduct of studies;</li> <li>• Ensure communication with, and awareness-raising of, stakeholders;</li> <li>• Prepare the final pre-project technical report including study summary and developed project proposal attached in an appendix.</li> </ul>                                                                                                                                                                                                                                                                                                                                                                                                                                                                                                                                                                                                                                                                                                                                                                                                                                                                                                                                                                                                                                                                                                                                                                                                                                                                                                                                                                                                                                                                                                                                                                                                                                            |
| Secretary/bookkeeper                                                             | <ul style="list-style-type: none"> <li>• Assist Coordinator with secretarial tasks;</li> <li>• Enter, edit, file and store pre-project-related documents;</li> <li>• Field Coordinator's phone calls;</li> <li>• Manage the work schedule of Coordinator;</li> <li>• Edit the minutes of meetings chaired by the Coordinator;</li> <li>• Design the media for recording pre-project accounting and financial transactions;</li> <li>• Record all pre-project accounting operations;</li> <li>• Develop the pre-project cashflow plan;</li> <li>• Prepare all documents required for auditing the project accounts.</li> </ul>                                                                                                                                                                                                                                                                                                                                                                                                                                                                                                                                                                                                                                                                                                                                                                                                                                                                                                                                                                                                                                                                                                                                                                                                                                                                                                                                                                                                                                                                                                                                                                                                    |
| National Consultant in charge of inventory survey on gallery forests in the MDBR | <ul style="list-style-type: none"> <li>• Compile and analyse existing data on gallery forests in the MDBR;</li> <li>• Identify and map MDBR gallery forests, and habitats in the target area, using vegetation maps, aerial and satellite photographs, and verification on the ground;</li> <li>• Analyse the status of land-use planning and use in the target area;</li> <li>• Describe and map habitats under various types of pressures where rare/threatened species or plant combinations of particular scientific or cultural interest are found, and describe the biodiversity found in these habitats;</li> <li>• Assess the potential of resource multiple use by communities;</li> <li>• Conduct a quick inventory of and describe the main forest formations as well as all other related formations in the study area;</li> <li>• Inventory biodiversity in MDBR forests;</li> <li>• Produce the map of vegetation and estimate land areas covered by each plan mapped formation;</li> <li>• Produce, if feasible, the list of endemic flora and wildlife species, rare/threatened/endangered species in the pre-project area;</li> <li>• Identify all human activities conducted in the area and their impacts on the conservation and sustainable management of MDBR gallery forests;</li> <li>• Produce the land-use map (zoning map);</li> <li>• Identify issues related to the conservation, restoration and sustainable management of MDBR gallery forests;</li> <li>• Identify and evaluate existing reforestation trials (technical procedures, strengths and weaknesses, constraints, etc.);</li> <li>• Assess the potential and constraints for natural regeneration and reforestation;</li> <li>• Conduct an analysis of constraints and opportunities for the conservation, restoration and sustainable management of MDBR gallery forests;</li> <li>• Propose a participatory management model for the conservation, restoration and sustainable management of the MDBR gallery forests in the pre-project area;</li> <li>• Introduce the survey findings in a validation workshop;</li> <li>• Participate in the workshop for validating the project document to be submitted to the ITTO.</li> </ul> |



|                                                                                           |                                                                                                                                                                                                                                                                                                                                                                                                                                                                                                                                                                                                                                                                                                                                                                                                                                                                                                                                                                                                                                                                                                                                                                                                                                                                                                                                                                              |
|-------------------------------------------------------------------------------------------|------------------------------------------------------------------------------------------------------------------------------------------------------------------------------------------------------------------------------------------------------------------------------------------------------------------------------------------------------------------------------------------------------------------------------------------------------------------------------------------------------------------------------------------------------------------------------------------------------------------------------------------------------------------------------------------------------------------------------------------------------------------------------------------------------------------------------------------------------------------------------------------------------------------------------------------------------------------------------------------------------------------------------------------------------------------------------------------------------------------------------------------------------------------------------------------------------------------------------------------------------------------------------------------------------------------------------------------------------------------------------|
| <p>National consultant in charge socio-economic survey of gallery forests in the MDBR</p> | <p>Based on ITTO guidelines for stakeholder involvement in project cycle:</p> <ul style="list-style-type: none"> <li>• Identify stakeholders in the future project;</li> <li>• Study the social structure, socio-politic relations between communities and local social groups (conflicts, competition, cooperation);</li> <li>• Conduct a socio-economic survey to collect baseline data on the socio-economic context and resource use;</li> <li>• Research data on current use of natural resources in the region and produce projections for the future;</li> <li>• Research information on traditional rights of access to forest resources;</li> <li>• Research relevant information on local knowledge relevant for biodiversity management;</li> <li>• Research information on the perception of local communities towards management and conservation objectives of sacred forests;</li> <li>• Identify potential IGAs to be implemented in this project to support local communities with the sustainable management of MDBR gallery forests;</li> <li>• Propose orientations for the appropriate participation of stakeholders in planned project implementation;</li> <li>• Introduce the survey's findings in a validation workshop;</li> <li>• Participate in the workshop for validating the project document to be submitted to ITTO for funding.</li> </ul> |
| <p>National Consultant in charge of project document development</p>                      | <p>Based on the various studies conducted in the area and on the recommendations of the validation workshop, and in accordance with ITTO procedures for project formulation:</p> <ul style="list-style-type: none"> <li>• Develop the draft project proposal for validation by a workshop including project key stakeholders;</li> <li>• Finalize the project proposal while reflecting amendments and recommendations formulated by the validation workshop;</li> <li>• Remain available to integrate amendments formulated by stakeholders and later by the ITTO Expert Panel.</li> </ul>                                                                                                                                                                                                                                                                                                                                                                                                                                                                                                                                                                                                                                                                                                                                                                                  |

#### **ANNEX 4. Assessment by the combined 60<sup>th</sup> and 61<sup>st</sup> Expert Panels**

**PPD 206/25 (F)**

#### **Restoration and Sustainable Management of Gallery Forests in the Mono Delta Biosphere Reserve in Benin**

##### Assessment by the combined Sixtieth and Sixty-first Panels

##### **A) Overall Assessment**

The Panel recognized the importance of this pre-project proposal which could contribute through the future intended project to the conservation and sustainable management of the Mono Delta Biosphere Reserve by building the capacities of local people with a view to improving their living conditions. The project to be developed from the implementation of this pre-project will specifically aim to assessing the potential of gallery forests in the Mono Delta Biosphere Reserve, with a view to developing an appropriate approach for their sustainable management.

The Panel noted that the pre-project is overall proposing a pre-project development assessment and stakeholder engagement process, which will deliver an analysis of the current state of gallery forests within the Mono Delta Biosphere Reserve, a diagnosis of the current factors contributing to the degradation of these gallery forests, as well as suite of recommended actions in the body of a full project proposal to ITTO. The Panel also noted that the pre-project proposal still needs some amendments for its improvement in relation to the specific recommendations listed here below.

##### **B) Specific Recommendations**

The proposal should be revised taking into account the overall assessment **and** the following specific recommendations:

1. Amend Section 1.2 (Pre-project relevance) of the pre-project proposal by reducing the number of ITTO objectives to those which are closely correlated to the identified key problem that the future intended project will contribute to address during its implementation.
2. Amend Section 3.4 (Work plan) by appropriately assigning responsibilities to the collaborating agency (CENTRE NATIONAL DE GESTION DES RÉSERVES DE FAUNE—CENAGREF) in the table 3.4.
3. Improve Section 4.1 (Executing agency and organizational structure) by adding relevant information on the collaborating agency (CENTRE NATIONAL DE GESTION DES RÉSERVES DE FAUNE—CENAGREF), as well as describing its roles and responsibilities in the pre-project implementation, while adding an organizational chart.
4. Add in Annex 1 the Profile of the collaborating agency (CENTRE NATIONAL DE GESTION DES RÉSERVES DE FAUNE—CENAGREF).
5. Include an Annex that shows the overall assessment and specific recommendations of the combined 60<sup>th</sup> and 61<sup>st</sup> Expert Panels and respective modifications in tabular form. Modifications should also be highlighted (**bold and underline**) in the text.

##### **C) Conclusion**

Category 1: The Panel concluded that the proposal could be commended to the Committee with incorporation of amendments.

Category C on the Environmental and Social Management Guidelines (ESM) checklist

**ANNEX 5. Overall assessment and specific recommendations of the combined 60<sup>th</sup> and 61<sup>st</sup> Expert Panels and resulting amendments**

| <b>Assessment by the 60<sup>th</sup> and 61<sup>st</sup> Expert Panels</b>                                                                                                                                                                                                                                                                                                                                                                                                                                                                                                                                                                                                                                                                                                                                                                                                                                                                                                                                                                                                                                                                                                                                                            | <b>Amendments</b>                                                                                                                                                 |
|---------------------------------------------------------------------------------------------------------------------------------------------------------------------------------------------------------------------------------------------------------------------------------------------------------------------------------------------------------------------------------------------------------------------------------------------------------------------------------------------------------------------------------------------------------------------------------------------------------------------------------------------------------------------------------------------------------------------------------------------------------------------------------------------------------------------------------------------------------------------------------------------------------------------------------------------------------------------------------------------------------------------------------------------------------------------------------------------------------------------------------------------------------------------------------------------------------------------------------------|-------------------------------------------------------------------------------------------------------------------------------------------------------------------|
| <p>A) Overall Assessment</p> <p>The Panel recognized the importance of this pre-project proposal which could contribute through the future intended project to the conservation and sustainable management of the Mono Delta Biosphere Reserve by building the capacities of local people with a view to improving their living conditions. The project to be developed from the implementation of this pre-project will specifically aim to assessing the potential of gallery forests in the Mono Delta Biosphere Reserve, with a view to developing an appropriate approach for their sustainable management.</p> <p>The Panel noted that the pre-project is overall proposing a pre-project development assessment and stakeholder engagement process, which will deliver an analysis of the current state of gallery forests within the Mono Delta Biosphere Reserve, a diagnosis of the current factors contributing to the degradation of these gallery forests, as well as suite of recommended actions in the body of a full project proposal to ITTO. The Panel also noted that the pre-project proposal still needs some amendments for its improvement in relation to the specific recommendations listed here below.</p> | <p>The required changes have been reflected in the Pre-project document (all parts highlighted in bold and underlined in the corresponding pages).</p>            |
| <p>B) <u>Specific Recommendations</u></p> <p>1. Amend Section 1.2 (Pre-project relevance) of the pre-project proposal by reducing the number of ITTO objectives to those which are closely correlated to the identified key problem that the future intended project will contribute to address during its implementation</p>                                                                                                                                                                                                                                                                                                                                                                                                                                                                                                                                                                                                                                                                                                                                                                                                                                                                                                         | <p>ITTO objective <b>q.</b> was deleted. See page <b>5</b>.</p>                                                                                                   |
| <p>2. Amend Section 3.4 (Work plan) by appropriately assigning responsibilities to the collaborating agency (CENTRE NATIONAL DE GESTION DES RÉSERVES DE FAUNE—CENAGREF) in the table 3.4.</p>                                                                                                                                                                                                                                                                                                                                                                                                                                                                                                                                                                                                                                                                                                                                                                                                                                                                                                                                                                                                                                         | <p>The responsibilities of the collaborating agency have been assigned in Section 3.4 (Work Plan). See page 11 and 12.</p>                                        |
| <p>3. Improve Section 4.1 (Executing agency and organizational structure) by adding relevant information on the collaborating agency (CENTRE NATIONAL DE GESTION DES RÉSERVES DE FAUNE—CENAGREF), as well as describing its roles and responsibilities in the pre-project implementation, while adding an organizational chart.</p>                                                                                                                                                                                                                                                                                                                                                                                                                                                                                                                                                                                                                                                                                                                                                                                                                                                                                                   | <p>Section 4.1 was improved by adding relevant information on the collaborating agency. See page 18.</p> <p>The Organizational Chart was inserted in page 22.</p> |
| <p>4. Add in Annex 1 the Profile of the collaborating agency (CENTRE NATIONAL DE GESTION DES RÉSERVES DE FAUNE—CENAGREF).</p>                                                                                                                                                                                                                                                                                                                                                                                                                                                                                                                                                                                                                                                                                                                                                                                                                                                                                                                                                                                                                                                                                                         | <p>The Profile of the collaborating agency was added in Annex 1. See pages 20-21.</p>                                                                             |
| <p>5. Include an Annex that shows the overall assessment and specific recommendations of the combined 60<sup>th</sup> and 61<sup>st</sup> Expert Panels and respective modifications in tabular form. Modifications should also be highlighted (<b><u>bold and underline</u></b>) in the text.</p>                                                                                                                                                                                                                                                                                                                                                                                                                                                                                                                                                                                                                                                                                                                                                                                                                                                                                                                                    | <p><b>See annex 5, page 27.</b></p>                                                                                                                               |