

# International Conference on Sustainable Management of Tropical Forests

Hilton Kuching,  
Sarawak, Malaysia

6 - 7  
March

20  
24

Organised by:



In collaboration with:



With support from:



**ITTO**  
INTERNATIONAL TROPICAL  
TIMBER ORGANISATION

# Table Of Content

---

- 1.** Introduction
- 2.** Objectives
- 3.** Message from Advisors
  - Dato Henry Lau, Chairman of Sarawak Timber Association
  - Dato Haji Hamden Bin Haji Mohammad, Director of Forests Sarawak
  - Tan Sri Abdul Wahid Omar, Chairman of WWF-Malaysia
- 4.** Foreword from Ms Sheam Satkuru, Executive Director of International Tropical Timber Organization (ITTO)
- 5.** Programme
- 6.** Keynote Address
- 7.** Sessions' Moderators and Speakers
- 8.** Brief Information on Reduced Impact Logging (RIL) Handbooks
- 9.** Brief Information on High Conservation Value (HCV) Training Modules
- 10.** Get to Know Your Souvenirs
- 11.** Organising Committee



## INTRODUCTION

Malaysia's unwavering commitment to addressing climate change concerns has been evident since it pledged at the Earth Summit in 1992 to maintain 50% of land area under permanent forest cover. The state of Sarawak, with at least 62% of land under forest cover, aims to set aside 6 million ha or 48.8% of land, as Permanent Forest Estate and 1 million ha or 8.1% of the land as Totally Protected Area. This pledge not only underscores Sarawak's dedication to conserving its natural and forested landscapes, but also strengthens the significant role Sarawak plays as the largest contributor to our nation's forest cover and permanent forest reserves.

Malaysia has proactively championed the cause of sustainable forest management (SFM) practices which involves a holistic approach that balances ecological, economic and social consideration, ensuring not only the long-term viability of forests but also their invaluable contribution to carbon reduction, thereby advancing the global fight against climate change. Acknowledging the importance of sustainably managing our forests, Sarawak has made forest management certification mandatory. The journey to have all production areas certified by 2025 may be tedious, but certain if all forest management units put in their concerted efforts with strong support from Government and all stakeholders.

Over time, land has become scarcer as more areas are needed for development and population expansion. This puts pressure on our resources, including our forests. Our journey towards securing more areas as permanent forests is still on-going and we cannot lose sight of the 6 million ha target. The functions of forests have evolved beyond solely providing timber resources for forestry economic activities to encompass crucial roles such as serving as habitats for wildlife, providing ecosystem services, and regulating climate, while ensuring that forests maintain their economic functions.

Recognising that forests are complex ecosystems with intricate interdependencies, shifting the paradigm on forest resource utilisation and effective sustainable management require collective efforts from all. In conjunction with the International Day of Forests 2024, this Conference, organised by Sarawak Timber Association in collaboration with Forest Department Sarawak and WWF-Malaysia and supported by International Tropical Timber Organization, serves as a timely and significant platform. It brings together experts, practitioners, policymakers and stakeholders to explore the crucial nexus between forestry and sustainable development towards establishing a holistic strategy that is key to conserving the long term vitality of tropical forests.



## OBJECTIVES:

- ▶ Advocate for the continuous conservation of existing forests and revitalise the once significantly valued Permanent Forest Estates (PFEs) by shifting the paradigm in sustainable forest management (SFM).
- ▶ Explore financing support or investment as part of a holistic strategy towards implementing SFM that have positive environmental, social and economic impacts.
- ▶ Promote SFM as a crucial strategy for environmental conservation, offering a multifaceted approach that not only promotes the responsible harvesting of timber but also nurtures ecological health and fosters social well-being.

By addressing these critical aspects, the Conference aims to encourage the establishment of partnerships to harness the potential of responsible forest management in the fight against climate change.





## Sarawak Timber Association (STA)

is a key institution actively fostering collaboration between its members, the government and international organisations to advance the timber industry, ensuring policy alignment, market compliance, and sustainability across both upstream and downstream activities in Sarawak.

In line with our recognition of tropical forests' crucial role in climate mitigation and biodiversity conservation, promoting sustainable forest management (SFM) has become an inherent mission of STA. STA has committed significant efforts to promote sustainable practices and responsible resource management, aiming to ensure the well-being of our forests in the long term. Combined with a shared global concern for forest conservation and environmental challenges, the organisation of this International Conference is therefore timely. Against this backdrop, I warmly welcome all participants to contribute to this crucial undertaking.

The Conference is a vital platform for collaboration among policymakers, industry experts, and other stakeholders to emphasise the importance of SFM for promoting good governance, environmental conservation and social responsibilities. It covers diverse topics such as tropical forest management, bioeconomy, net-zero initiatives, global market trends, insights from various forest concessions, reduced impact logging, climate-smart practices and challenges in the timber industry. It will also explore various green financing options to support SFM practices, marking a significant milestone in bringing together expertise and fostering a call to action.

Our goal is to explore effective strategies for encouraging more permanent forests with sustainable tenure through a paradigm shift in SFM supported by transparency and good governance in licensing and reporting. For government bodies, environmentalists, socialists, non-governmental organisations, timber industry or media alike, transparent consultation is key to achieving a balanced win-win outcome that incorporate pragmatic measures.

With that, on behalf of STA I extend my heartfelt appreciation to participants, speakers, moderators, and partners for their invaluable contributions that have been instrumental in ensuring the success of the Conference.

**MESSAGE FROM  
DATO HENRY LAU**  
*CHAIRMAN OF SARAWAK TIMBER ASSOCIATION*



*With great pleasure  
and enthusiasm,*

I extend a warm welcome to all distinguished guests, speakers, and delegates to the International Conference on Sustainable Management of Tropical Forests. I am honoured to be a part of this significant event that brings together experts, researchers, and practitioners from across the globe to delve into the critical issues surrounding the sustainable management of our precious tropical forests.

Forest Department Sarawak takes immense pride in being the key implementing agency dedicated to the conservation and sustainable use of our state's rich forest resources. Through strategic initiatives, innovative policies, and collaborative efforts, we strive to strike a delicate balance between meeting

the growing demands for resources and ensuring long-term health and resilience. This conference serves as a pivotal platform for exchanging knowledge, ideas, and best practices among global thought leaders in tropical forest management. In an era marked by unprecedented environmental challenges, the importance of collaborative knowledge-sharing cannot be overstated. The diverse perspectives and experiences brought forth by our esteemed speakers will undoubtedly contribute to the development of holistic and effective solutions that transcend geographical boundaries.

As we engage in fruitful discussions and forge new connections, let us collectively reaffirm our commitment to the sustainable management of tropical forests. By fostering cooperation and mutual learning, we can amplify our impact and work towards a future where the delicate balance between human needs and ecological preservation is maintained. May our collective efforts pave the way for a more sustainable and resilient future for our tropical forests.

**MESSAGE FROM**  
**DATU HAJI HAMDEN BIN HAJI MOHAMMAD**  
**DIRECTOR OF FORESTS SARAWAK**





## WWF-Malaysia

has always been on a conservation agenda for the benefit of people and nature. The Sarawak Conservation Programme strategy is developed with inputs from partners and stakeholders from government agencies, private sectors, academia and local communities.

The conservation of forests is one of our key targets, and is aligned with the government's policy to set aside 6 million ha Permanent Forest Estates and 1 million ha Totally Protected Areas.

One of our key work is helping the government to identify priority conservation areas, as a reference for sustainable land use planning which include the conservation of forests. Other work include the promotion and capacity building on High Conservation Values, wildlife surveys inside forest management units, and engagement with and

empowerment of local communities. Community empowerment can equip affected stakeholders such as the communities, with the necessary and right knowledge to participate in sustainable forest management.

Conservation of forests and our natural resources require strong partnerships among all sectors. This international conference comes at the right time when efforts must intensify as we progress towards the 2030 Sustainable Development Goals and 2050 Net Zero target.

The vast forests of Sarawak have crucial roles in Malaysia's climate and biodiversity commitments, and I echo the efforts made by the Sarawak Government in keeping these forests.

Forests that are sustainably managed can bring in economic, social and ecological benefits. Above all, the function of forests in mitigating climate change impacts is of utmost importance. Therefore, all parties should adopt multifaceted and innovative approaches in the conservation of forests, aligned to these commitments, and to work ever more closely together.

As a member of the organising committee, WWF-Malaysia welcomes all speakers and participants to the conference and I wish you a fruitful engagement over the next two days.

**MESSAGE FROM**  
**TAN SRI ABDUL WAHID OMAR**  
**CHAIRMAN OF WWF-MALAYSIA**





## *International collaborative partnerships*

are exemplified by efforts like this International Conference on Sustainable Management of Tropical Forests, a joint effort between the International Tropical Timber Organization (ITTO), the Sarawak Timber Association, the Forest Department Sarawak and WWF-Malaysia.

It is undisputable that sustainable forest management (SFM) and associated legal and sustainable timber supply chains are vital for ensuring the longevity of tropical forests, addressing both conservation and responsible consumption. This lies at the core of the ITTO: the Organization's dual – and mutually reinforcing – goals are to promote SFM and legal and sustainable timber trade. As a Malaysian national and the ITTO's Executive Director, I am proud that my country has made great strides towards achieving them and for my organization to have supported Malaysia in its sustainability journey. ITTO has funded 44 projects in Malaysia since

1989, valued at over USD 24 million. Currently, there are two ongoing projects in Sarawak's Upper Baram Forest Area.

Dispelling the misconception that sustainable timber harvesting equates to deforestation is critical. Legal and sustainable timber is recognized as an environmentally friendly, renewable, carbon-storing and recyclable material – a cornerstone of sustainability. To fully achieve the myriad benefits of forest conservation and sustainable use, much more investment, coupled with sustainable financial mechanisms, is urgently needed. I hope this conference will highlight this, while strengthening strategic partnerships between governments, the private sector and civil society.

SFM and legal and sustainable supply chains make significant contributions to climate-change mitigation and adaptation and several Sustainable Development Goals (SDGs), including SDG 1 (no poverty), SDG 3 (good health and wellbeing), SDG 8 (decent work and economic growth), SDG 11 (sustainable cities and communities), SDG 15 (life on land) and SDG 17 (partnerships for the goals).

I am confident that this conference will further guide us towards a future in which SFM is a universal reality. Thank you for your dedication and commitment to building a sustainable future together.

**FOREWORD FROM  
MS SHEAM SATKURU  
EXECUTIVE DIRECTOR OF INTERNATIONAL  
TROPICAL TIMBER ORGANIZATION**

# PROGRAMME

6<sup>th</sup> - 7<sup>th</sup> March 2024

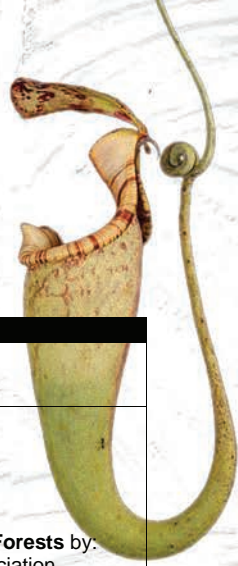


DAY

1

# PROGRAMME

6<sup>th</sup> March 2024



<i>Time</i>	<i>Agenda</i>
8:30 am	<b>Arrival and registration of participants</b>
9:30 am	<p><b>National &amp; State Anthem</b></p> <p><b>Doa Recitation</b></p> <p><b>Setting the Scene on Collective Action for Sustainable Forests</b> by:</p> <ul style="list-style-type: none"> <li>• Dato Henry Lau, Chairman of Sarawak Timber Association</li> <li>• Datu Haji Hamden Bin Haji Mohammad, Director of Forests Sarawak, Forest Department Sarawak</li> <li>• Tan Sri Abdul Wahid Omar, Chairman of WWF-Malaysia</li> </ul>
	<p><b>Keynote Address</b> by Ms Sheam Satkuru, Executive Director, International Tropical Timber Organization</p> <p><i>Sustainable tropical forestry, supply chains and investment – a pathway for a sustainable future</i></p>
	<ul style="list-style-type: none"> <li>• <b>Video Presentation</b> by Forest Department Sarawak</li> <li>• <b>Launching of Reduced Impact Logging (RIL) Guidelines for Ground-Based Timber Harvesting in the State of Sarawak Handbooks</b> <ul style="list-style-type: none"> <li>– joint project between Forest Department Sarawak and Sarawak Timber Association</li> </ul> </li> <li>• <b>Launching of High Conservation Value Training Modules</b> <ul style="list-style-type: none"> <li>– joint project of WWF-Malaysia, Sarawak Timber Association, Forest Department Sarawak and Sarawak Forestry Corporation</li> </ul> </li> <li>• <b>Group Photo</b></li> </ul>
12.00 pm	Lunch

DAY

1

# PROGRAMME

6<sup>th</sup> March 2024



Time	Agenda
01:30 pm – 02:50 pm	<p><b>Session 1: Valuing our Forest - Future Directions and Policies</b></p> <p>This session will explore the intricate balance required to ensure the continued health and prosperity of our invaluable forested landscapes by examining the inherent value of our forests through the multifaceted contributions they make to our ecosystems, economies, and overall well-being, and the myriad challenges that pose threats to the conservation and sustainable management of these vital natural resources.</p> <ul style="list-style-type: none"> <li>• Creating and enhancing values of our forests, adopting SFM that benefits people, biodiversity and business.</li> <li>• Multifaceted challenges faced by forestry, ranging from issues such as market access and demand for sustainable products, resistance from local community, poor economic scale and many more.</li> <li>• Global trends in SFM and creating demand for sustainable tropical timber.</li> </ul> <p><u>Moderator:</u> Mr Yong Teng Koon</p> <p><u>Speakers:</u></p> <ul style="list-style-type: none"> <li>• <b>Dr. Lyndall Bull</b> (online speaker) Forestry Officer, Food and Agriculture Organization (FAO) <i>The importance of innovation to support sustainable supply and demand of forest products in a growing bioeconomy</i></li> <li>• <b>Prof. Emeritus Dr. Kanehiro Kitayama</b> <i>Internalising ecosystem services in sustainable forestry by mapping biodiversity and carbon in production forests</i></li> <li>• <b>Mr Rupert Oliver</b> Environmental Policy Director, American Hardwood Export Council (AHEC) <i>Demonstrating the sustainability of hardwood products in global markets: New challenges and innovative solutions</i></li> <li>• <b>Dr. Alain Karsenty</b> (online speaker) Senior Scientist, French Agricultural Research Centre for International Development (CIRAD) <i>Using direct fiscal incentives for sustainable forest management</i></li> </ul>
02:50 pm – 03:05 pm	Question & Answer
03:05 pm – 03:30 pm	Tea Break

DAY

1

# PROGRAMME

6<sup>th</sup> March 2024

Time	Agenda
3:30 pm – 5:10 pm	<p><b>Session 2: Climate-smart SFM - What Are The Options?</b></p> <p>This session will delve into the contentious relationship between tropical forest activities and their impacts on climate, and how alternative or best practices can be prescribed.</p> <ul style="list-style-type: none"> <li>• Comparative analysis of greenhouse gas emission sources</li> <li>• Putting forestry-related emissions into perspective and highlighting the role of forestry and its contribution in GHG emissions.</li> <li>• Malaysia's net zero direction and the forestry sector: how are we heading there?</li> </ul> <p><u>Moderator:</u> Ms Sheam Satkuru, Executive Director of International Tropical Timber Organization</p> <p><u>Speakers:</u></p> <ul style="list-style-type: none"> <li>• <b>Dr. Gary William Theseira</b> Advisor, Malaysian Green Technology and Climate Change Corporation (MGTC) <i>Net-zero commitments and their impact on the forestry sector</i></li> <li>• <b>Mr Dave Sivaprasad (online speaker)</b> Managing Director, Boston Consultant Group <i>Nature in Forestry</i></li> <li>• <b>Prof. Dr. Francis Edward Putz</b> Research Professor, Forest Research Institute, University of the Sunshine Coast (UniSc) <i>Transforming logging into forest management</i></li> <li>• <b>Mr Richard Laity</b> Manager, Programme for the Enforcement of Forest Certification (PEFC) Asia Pacific <i>PEFC's climate-smart Sustainable Forest Management (SFM)</i></li> <li>• <b>Ms Charmaine Chee</b> Country Director, Forest Stewardship Council (FSC) Malaysia <i>Advancing climate-smart forestry with the Forest Stewardship Council</i></li> </ul>
5:10 pm – 5:40pm	Question & Answer
5:40 pm	End of Day 1

DAY

2

# PROGRAMME

7<sup>th</sup> March 2024



Time	Agenda
09:00 am – 10:20am	<p><b>Session 3: Finance, Market and Branding - Building Opportunities</b></p> <p>This session aims to catalyse discussions on how financial innovation can be harnessed to advance the cause of SFM.</p> <ul style="list-style-type: none"> <li>• Green finance instruments for responsible forest concessions, including the roles of international agencies in providing financial support and technical assistance for SFM initiatives.</li> <li>• Fostering sustainable forestry practices and insights into the collaboration between NGOs and the private sector in financing these initiatives.</li> <li>• Securing buyers' support for SFM costs and financing for forestry activities from financial institutions, and creating a branding for tropical timber.</li> </ul> <p><u>Moderator:</u> Mr Lawrence Chia, Chief Executive Officer, Samling Group</p> <p><u>Speakers:</u></p> <ul style="list-style-type: none"> <li>• <b>Dr. Yuan Bing</b> Chairman, Global Forest Products Green Supply Chain (Macau) Federation <i>Green Finance for Sustainable Forest Management in Asia</i></li> <li>• <b>Ms Francoise Van De Ven</b> President, International Technical Association of Tropical Timber (ATIBT) <i>Managing the forests to ensure sustainability for future generations and maintain a key position for tropical timber on the markets</i></li> <li>• <b>Dr. Kevin Grace</b> Director, Global Forestry Services (GFS) <i>Sustainable forest &amp; timber resource management</i></li> <li>• <b>Prof. Dr. Claudia Romero</b> Professor of Tropical Forestry, University of the Sunshine Coast (UniSC) <i>Improve Forest Management Opportunities to Reduce Tropical Forest Degradation &amp; Mitigate Climate Change</i></li> </ul>
10:20 am – 10:35 am	Question & Answer
10:35am – 10:45 am	Tea Break

DAY

2

# PROGRAMME

7<sup>th</sup> March 2024

Time	Agenda
10:45 am – 11:45 am	<p><b>Session 4: Collaboration and Partnership - Research, Risk and Safeguards</b></p> <p>Building upon valuable insights gained from earlier sessions that explored the integral role of forests in mitigating climate change as well as green financing, this session aims to aid in the understanding of SFM and foster collaborative initiatives that resonate with the broader objectives of environmental sustainability and community well-being.</p> <ul style="list-style-type: none"> <li>• Highlight how global conservation perspective integrates with SFM strategies, contributing to broader environmental objectives</li> <li>• Importance of community involvement and cooperation in SFM</li> <li>• Is there a foolproof approach in preventing conflicting uses and claims, or are safeguards necessary?</li> </ul> <p><u>Moderator:</u> Dr. Jason Hon, Associate Director, Sarawak and Conservation Science, WWF-Malaysia</p> <p><u>Speakers:</u></p> <ul style="list-style-type: none"> <li>• <b>Mr Andrew Heald</b> Co-founder and Chief Operating Officer, iNovaland <i>Restoring landscapes for people and planet</i></li> <li>• <b>Mr Bounyadeth Phouangmala</b> Country Director, Regional Community Forestry Training Center for Asia and the Pacific (RECOFTC) <i>RECOFTC experience in capacity building and rolling out Free, Prior and Informed Consent (FPIC) processes in village forest in Laos</i></li> <li>• <b>Ms Evelyn Jugi</b> Senior Researcher, Forest Department Sarawak (FDS) <i>Sustainable forest management (SFM) practices in Sarawak – Local communities awareness and participation</i></li> </ul>
11:45 am – 12:15 pm	Question & Answer
12:15 pm – 01:00 pm	Conclusion & Closing by Mr Yong Teng Koon
01:00 pm – 02:00 pm	Lunch
	End of Conference



# KEYNOTE ADDRESS

---

*Ms Sheam Satkuru*  
*Executive Director,*  
*International Tropical Timber Organization*

## SUSTAINABLE TROPICAL FORESTRY, SUPPLY CHAINS AND INVESTMENT – A PATHWAY FOR A SUSTAINABLE FUTURE

---

The relevance of forests, especially tropical forests, in facing global challenges from poverty to climate change cannot be overstated. The effective implementation of sustainable forest management (SFM) in the tropics has never been more pressing. Sustainably managed tropical forests and associated legal and sustainable timber supply chains are vital for ensuring the longevity of tropical forests while addressing both conservation and responsible production and consumption. Timber is one of the most environmentally friendly materials that exists. It is critical to dispel the misconception that harvesting in a tropical forest leads or contributes to deforestation. Timber, when sourced, processed and used legally and sustainably, is a renewable, carbon-storing and recyclable material – a cornerstone of sustainability.

Sustainable timber harvesting provides forest owners with revenue to maintain their forests. However, further efforts are needed to place robust, verifiable information on the legality and sustainability of tropical wood and tropical wood products in the marketplace to enable consumers to support and reward the efforts of timber suppliers who are managing their forests legally and sustainably. Such valuable resources also generate employment for local people, including local communities and indigenous people. Malaysia, for one, has tremendous experience in how much benefits can be derived from value-adding and processing of wood resources. Further investments accompanied by appropriate fiscal and non-fiscal incentives are urgently needed to realize the full potential of tropical forests and wood industries to provide efficient and cost-effective nature-based solutions for a sustainable future.

My keynote address will highlight major global changes in tropical wood production, consumption and trade in the last three decades, and their impacts on SFM. It will also showcase examples and other initiatives that illustrate the potential of sustainable tropical forestry to uplift livelihoods, conserve forests and provide multiple benefits worth replicating and escalating across the tropics, which in turn, will greatly contribute to global sustainable development.



## MODERATOR

### Mr Yong Teng Koon

served the Malaysian Timber Certification Council (MTCC) for 20 years from November 2001 to July 2021. He joined MTCC as Manager in-charge of forest management certification, promoted to Senior Manager (Forest Management) in September 2006 and further promoted to Chief Executive Officer in January 2013. He retired from MTCC in July 2021. Prior to joining MTCC, he was attached to the Forest Management Unit of the Forestry Department Peninsular Malaysia Headquarters for 17 years from 1984 to 2001. He holds a Bachelor Degree in Forestry from Universiti Putra Malaysia (1984) and a Master Degree in Forest Management from University of British Columbia, Canada (1996).



## SPEAKER

### Dr. Lyndall Bull

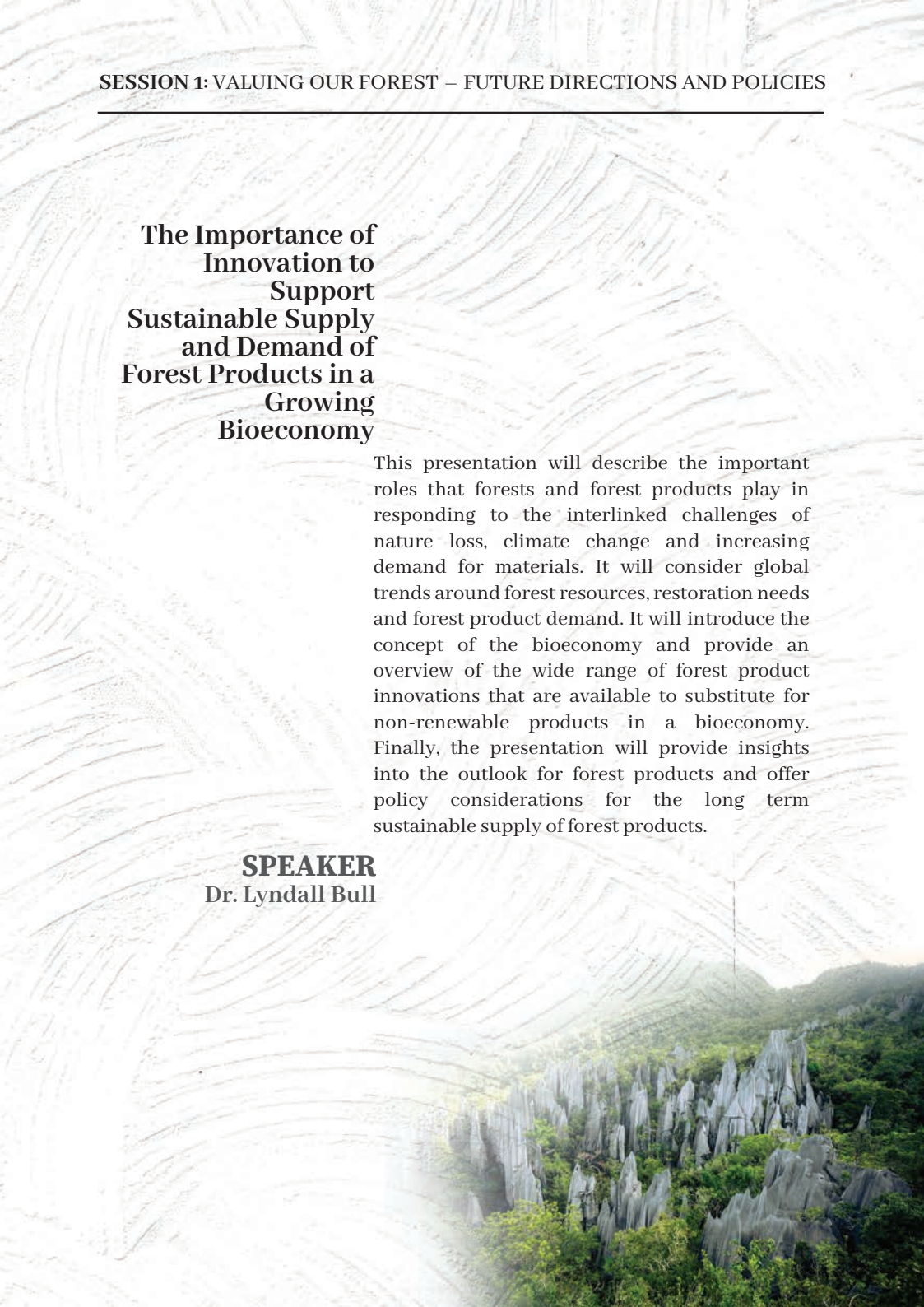
is a Forestry Officer at the Food and Agriculture Organization (FAO) of the United Nations. In her work at FAO, she focuses on innovation in the forest sector and the development of a sustainable forest-based bioeconomy. She has extensive experience across the global forest sector including in forest product innovation development and management, policy and research. She has worked in a senior capacity in the government, private and education sectors. She has a PhD in innovation in the forest sector from the University of Melbourne. Prior to joining FAO, she was the founder of a consulting business providing services to the global forest sector and was a Non-Executive Director for two of Australia's largest forest owners.



**The Importance of  
Innovation to  
Support  
Sustainable Supply  
and Demand of  
Forest Products in a  
Growing  
Bioeconomy**

This presentation will describe the important roles that forests and forest products play in responding to the interlinked challenges of nature loss, climate change and increasing demand for materials. It will consider global trends around forest resources, restoration needs and forest product demand. It will introduce the concept of the bioeconomy and provide an overview of the wide range of forest product innovations that are available to substitute for non-renewable products in a bioeconomy. Finally, the presentation will provide insights into the outlook for forest products and offer policy considerations for the long term sustainable supply of forest products.

**SPEAKER**  
**Dr. Lyndall Bull**



## **SPEAKER**

**Prof. Emeritus Dr. Kanehiro Kitayama**



received his PhD from Botany Department, University of Hawaii at Manoa in 1992. He was Professor of Forest Ecology at the Kyoto University, Japan, until his retirement in March 2023. For his contribution to research and science in academia, he was awarded the title of Emeritus Professor by the university. He has been involved in research pertaining to tropical forest ecology with four decades of experience. His main research concerns include topics in plant – soil – nutrient dynamics and incorporating that into sustainable forestry. He is the author of more than 170 papers published in international journals. His main research site is in Sabah, particularly in the tropical montane forest on Mount Kinabalu and in the lowland forests of Deramakot Forest Reserve. He intends to continue contributing to the growth of research on forest ecology, management, and conservation in Malaysia through shared knowledge and collaboration with relevant agencies.



## **Internalising Ecosystem Services in Sustainable Forestry by Mapping Biodiversity and Carbon in Production Forests**

### **SPEAKER**

**Prof. Emeritus  
Dr. Kanehiro Kitayama**

Conservation of ecosystem services is increasingly being sought in production forests in tropical countries. Foresters are required to verify environmental safeguards for conserving ecosystems services in their management units. On the other hand, if environmental safeguards are verified with quantitative indicators and reported in a transparent way, it will invite a wide array of supports from various stakeholders, which will eventually improve the market access of produced timber with added values. However, until recently, there was no reliable method to quantitatively evaluate spatial and temporal changes of ecosystem services in production forests. I and colleagues developed a new method, “biodiversity observation for land and ecosystem health (BOLEH)”, to simultaneously evaluate biodiversity and carbon density on a landscape scale in production forests in Sabah. In this method, forest intactness as a surrogate of biodiversity as well as carbon density are simultaneously mapped with 30x30m pixels over the entire area of a management unit (in the order of 100,000 ha). We tested the applicability of our method in nine forest management units in Sabah, Sarawak and East Kalimantan. Further, our method was used for MRV (measuring, reporting and verifying) of the new FSC institution “Ecosystem Services Certification” in the concession of PT Ratah Timber, East Kalimantan, and the company successfully received an ecosystem-service certification for biodiversity in 2020. I will briefly introduce the procedure of this method and discuss the benefits of internalizing ecosystem services in forest management.



**SPEAKER**

**Mr Rupert Oliver**



is an Environmental Policy Director for the American Hardwood Export Council, the leading international trade association for the American hardwood industry, representing the committed exporters among U.S. hardwood companies, who now market and sell their products in significant volumes all around the world. He has over 30 years' experience in the international forest products sector specialising in hardwood market intelligence and trade analysis, marketing and promotion, international trade issues, forest policy and sustainability, life cycle assessment and other environmental issues. Between 2014 and 2021, he was lead technical consultant to the Forest Law Enforcement, Governance and Trade (FLEGT) Independent Market Monitoring project, hosted by the ITTO where he was responsible for assessing the market impact of FLEGT licensing systems implemented under the terms of Voluntary Partnership Agreements between the EU and tropical timber supplying countries. He has a Masters degree in Forest Business Administration from Aberdeen University and Honours Degree from Oxford University.

## Demonstrating The Sustainability Of Hardwood Products In Global Markets: New Challenges And Innovative Solutions

Rupert Oliver will speak on the theme “Demonstrating the sustainability of hardwood products in global markets: new challenges and innovative solutions”. Drawing on 30 years of experience, he will demonstrate that the policy environment around sustainable forest management and the international hardwood trade has entered a radical new phase. New challenges and opportunities are emerging in the wake of the COVID pandemic and with a rapidly

evolving geopolitical environment, rising concern for climate change, and a critical need to shift to more sustainable forms of consumption. In the EU, the forest policy focus has shifted away from FLEG and timber legality verification with rising concern for the carbon emissions of “forest-risk” products and the requirement that these be tracked to deforestation-free harvest geolocations. Elsewhere, national governments and the private sector are clamouring for a renewed focus on national sustainable forest programs and for greater consistency in policy making and the demands placed on the forest products trade. Lack of such consistency will create new trade barriers, particularly for smallholders, small and medium enterprises (SMEs) and manufacturers of composite products, for which supply chains are more complex. The good news is that there is growing awareness that the causes of deforestation lie outside the hardwood sector and that sustainably managed hardwood products offer significant environmental advantages compared to competing materials. Furthermore, innovative new approaches to sustainability verification in the forest products sector, drawing on the latest technology and a better understanding of the causes of deforestation, can be more cost-effective, accurate and equitable.

**SPEAKER**  
**Mr Rupert Oliver**

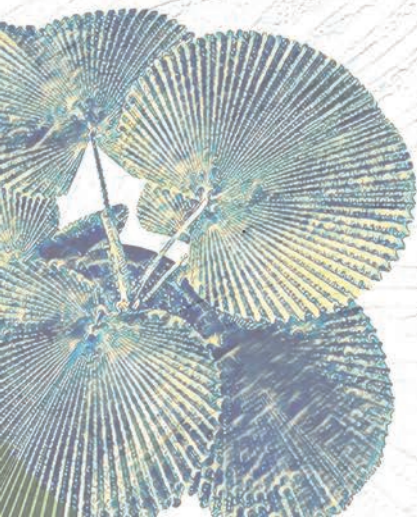


## **SPEAKER**

**Dr. Alain Karsenty**



an environmental economist, is Senior Scientist at French Agricultural Research Centre for International Development (CIRAD) (Montpellier, France) since 1992. His research and expertise areas cover most of the economic instruments for the environment, including ecological taxation, Payments for Environmental Services and REDD+. He has an extensive knowledge of land tenure, concessions, forest policies and practices in West & Central Africa and Madagascar. As an international consultant for International Tropical Timber Organization, the World Bank, the European Union, Food and Agriculture Organization, etc., he participated in several policy and economic reforms processes with national teams in Africa. He is the authors of dozens of scientific articles, and co-authored several books and special issues. He was, for 10 years, member of the scientific board of the French GEF, he is an advisor for the L'Oréal Fund for Nature Regeneration, and member of the Board of Directors of Association Technique Internationale des Bois Tropicaux (ATIBT).



## Using Direct Fiscal Incentives for Sustainable Forest Management

“Feebates” (for fees and rebates) is an ecological mechanism that combines an increase in taxes (the malus) applied to the production or purchase of unsustainable management practices with a reduction in taxes for those deemed sustainable. In such a mechanism, the reduction in tax on sustainable management practices (i.e., the bonus) is financed by an increase in tax on non-sustainable ones (i.e. the malus). A bonus-malus mechanism aims for tax neutrality (in which tax

increases and decreases are balanced each year). The most appropriate solution is to use forest management certifications (FSC or PEFC) to grant bonuses. In this way, a distinction would be made between certified and non-certified timber, with the former benefiting from a bonus (lower taxes) financed by the malus (higher taxes for non-certified wood).

Several countries already apply fiscal/economic incentives based on independent certification. Peru and Brazil grant tax reductions to FSC-certified concessions. Since 2020, Gabon has had three different area tax rates (SFM certified, certified legal, non-certified). The difficulty with such a mechanism is that it is difficult to predict the extent to which producers will be sensitive to the tax differential created by the bonus-malus system, and thus modify their behavior (which is the objective) from one year to the next. This may make it difficult to achieve budget neutrality (i.e. the guarantee that the bonus paid to certified producers is fully financed by the malus), and needs periodical adjustments.

**SPEAKER**  
**Dr. Alain Karsenty**







### **MODERATOR**

#### **Ms Sheam Satkuru**

Executive Director,  
International Tropical  
Timber Organization

Ms Sheam Satkuru was appointed as ITTO's first female Executive Director at the 57th session of the International Tropical Timber Council in December 2021. She has nearly 30 years of experience in tropical forest policy and the wood products industry. She is a specialist in international trade regulations, with strong skills and experience in international negotiations, legal and policy analysis, communications and public affairs. She has served as a technical expert, adviser and board member in several capacities. She holds a Master in Corporate and Commercial Law degree from King's College, the University of London and was called to the English Bar in 1993.

A citizen of Malaysia, Ms Satkuru was ITTO Director of Operations between October 2017 and January 2022 and was based in Europe for Malaysia prior to joining the ITTO. Throughout her career, she has focused very much on sustainable tropical forestry, linking the private sector and communities, international policies and legal and sustainable international trade in forest products/industries.



### **SPEAKER**

#### **Mr. Dave Sivaprasad**

is a Managing Director and Partner in Boston Consulting Group's (BCG) climate and sustainability, energy, public sector and social impact practices. He works with private and public sector clients on climate and sustainability and energy transition. With more than 20 years of experience in the energy sector, he leads the climate and sustainability practice for BCG in Southeast Asia and the climate adaptation and resilience topic for BCG in the Asia Pacific. He has overseen numerous impactful projects, including net-zero strategies, socio-economic impact studies, and climate transition financing initiatives. Prior to joining BCG, he was a Vice President in Schlumberger Business Consulting and an Engagement Manager in McKinsey & Company. He has also worked in an NGO supporting refugees from the Middle East and North Africa. He holds a Master of Engineering in Chemical Engineering from the University of Cambridge.



## Nature in Forestry

**SPEAKER**  
**Mr. Dave Sivaprasad**

This presentation focuses on the urgency for conservation as deforestation drives steep ecological decline - impacting biodiversity, climate, and societal well-being. Global shift towards environmental sustainability and driving increasing private and public sector action. Businesses must adopt a nature-positive agenda, weaving it into their operations to curtail deforestation and promote a nature-positive agenda. There are emerging trends such as new economic instruments like Forestry Biodiversity Credits that may help support action.



### **SPEAKER**

#### **Dr. Gary William Theseira**



is a director and council member at Climate Governance Malaysia, an adjunct faculty member at the Asia School of Business, serves on the board of the Centre for Environment, Technology and Development Malaysia, and is advisor to the Malaysian Green Technology and Climate Change Corporation. Following his tenure at the Forest Research Institute of Malaysia, where he conducted forest carbon quantification, supported the National Clean Development Mechanism programme, and led the development of the biodiversity clearing house mechanism, he was seconded to the Ministry of Natural Resources and Environment (NRE) as Deputy Undersecretary for Climate Change and negotiated for Malaysia at

fourteen UN Climate Change Conferences (COPs). In 2012, the G-77 and China appointed him to coordinate negotiations leading to the 2015 Paris Agreement, and in 2018, he was appointed by the Minister of Energy, Science, Technology, Environment and Climate Change, YB Yeo Bee Yin, as Special Functions Officer on Environment and Climate Change.

He currently assists the Joint Committee on Climate Change on the development of the National Climate Data Catalogue and serves in the Selangor State Action Council on Climate Change as a subject matter expert. Dr. Theseira has B.Sc. and M.Sc. degrees in Agriculture from Southern Illinois University, received his PhD in Agronomy from Mississippi State University, and conducted Post Doctoral Research at the University of Minnesota.



## Net-Zero Commitments And Their Impact On The Forestry Sector

### **SPEAKER**

**Dr. Gary William Theseira**

According to the Sixth Assessment Report of the Intergovernmental Panel on Climate Change (IPCC AR6), to stay within the 1.5-degree temperature boundary, emissions cannot exceed 340 to 400 Gg. This means that global greenhouse gas emissions need to halve by 2030 and reach zero by 2040. Regrettably, however, global net-zero pledges are falling very much short of that target as too many of the large developed-country emitters are only planning on achieving net-zero emissions by 2050. Net-zero emissions pledges have been made at National, Subnational (state/city), as well as at the Corporation level. These pledges are governed by different accounting, compliance, and reporting frameworks, some mandatory, and others, voluntary, and therefore have differing implications. Regardless, these entities are all seeking supplies of credible and verified emissions offsets at the lowest possible cost. In

response to this demand, numerous emissions reduction and greenhouse gas removal projects have been initiated with the expressed purpose of generating verified emissions reductions. These are supported by an ecosystem of assessors, validators, standards, verifiers, and auditors. A recent report, however, cast serious doubt on the veracity of forest-sourced carbon offsets, claiming that credits were being generated for 'protecting' forests that were not threatened or that credits were being issued for tracts of forest, previously monetized for the same purpose. These alleged violations of the principles of additionality, permanence and 'no double counting' have given rise to organizations dedicated to ensuring the environmental integrity of sources of carbon credits as well as the integrity of credit consumer entities. These allegations have also driven governmental regulatory agencies to formulate principles and guidance aimed at preventing and eliminating such practices. This presentation provides a summary of these developments and updates stakeholders on the various methodologies, guidance, and initiatives being tabled at various fora aimed at resolving these issues and delivering a consistent supply of verified nature-based offsets to meet growing demand.



## **SPEAKER**

### **Prof. Dr. Francis Edward Putz**



is a Research Professor in the Forest Research Institute at the University of the Sunshine Coast in Queensland and a Distinguished Professor at the University of Florida. He started his research career in 1973 under the supervision of Tang Hon Tat and Francis S.P. Ng at the Forest Research Institute of Malaysia in Kepong. His goal as a

scientist is to improve the fates of tropical forests through implementation of silvicultural practices that reduce the deleterious impacts of selective logging and increase the sustainability of timber yields without undue losses in biodiversity or ecosystem functions. To this end, he has long been involved in forest certification and in forest carbon marketing. Although his RIL-Sabah project, which started in 1993, was ground-breaking in its approach, no RIL-based carbon credits have yet been sold (but policies are now aligned for such sales to happen). While he has published hundreds of scientific papers that have been cited by other scientists thousands of times, he admits that the impacts of his research on the fates of forests have been extremely modest. Despite these failures, his efforts on behalf of forests and forestry remain undiminished.

## Transforming Logging Into Forest Management

**SPEAKER**  
**Prof.Dr. Francis Edward Putz**

Tropical forestry fares poorly economically, ecologically, or politically while sustainability remains an often misunderstood, elusive, but attainable goal. While carbon financing could help in the much-needed transformation from timber exploitation to forest management, carbon marketing opportunities are impeded by the sector's bad reputation; too many influential people equate any sort of forest intervention with degradation. This denigration of forestry can lead to market closures and harvest bans. In this talk, two carbon-positive and cost-effective alternatives to business-as-usual forestry practices are explored.

A long-promoted first step away from forest exploitation to forest management is employment of reduced-impact logging (RIL) practices. Use of the 'RIL-C Protocol', a standardized and efficient way to assess the stand damage and carbon

emissions from selective logging, an overview of the status of reduced-impact logging in the tropics. As-yet unpublished data from 25 logging concessions across the Indonesian archipelago show considerable variation in the effectiveness of RIL implementation, no apparent benefits of forest certification, and an overall score of 40% effectiveness.

Lianas (=climbers) are increasingly impeding tropical forest recovery after selective logging, particularly where the logging was not careful, overly intense, or too frequent. By liberating liana-encumbered future crop trees (FCTs) from lianas, timber volume increments and rates of carbon sequestration can double. Applied to 5 FCTs per hectare, an additional 3.3 MgCO<sub>2</sub>ha<sup>-1</sup> is sequestered at a cost of <\$2US per Mg. This carbon-positive, leakage-free, and totally additional intervention is biodiversity friendly and ready to implement.

As indicated by 30-years of failed efforts to market forest carbon from RIL, using carbon financing to cut lianas or otherwise improve tropical forestry is fraught with challenges. Meeting these challenges will be greatly aided by endorsement and full participation of forest industries.



## SPEAKER

Mr. Richard Laity



is a third-generation forester who has been involved in a range of forestry operations and projects since the early 2000s. He brings a wealth of knowledge facilitating stakeholder engagement, as well as technical and managerial experience in running a commercial agroforestry syndicate in Southeast Australia and Laos. Over the last 15 years, he has held various positions in a range of organizations throughout the Asia-Pacific region, focusing on sustainable forestry and trade. For the last nine (9) years, he has managed PEFC International's South East Asia programme. He is committed to developing feasible certification processes for forestry, especially for smallholders, to meet international market requirements.



## PEFC's Climate-Smart Sustainable Forest Management

### **SPEAKER**

**Mr. Richard Laity**

Climate smart forestry serves as the foundational pillar for achieving sustainable forest management. Such as wood working industries, manufacturing pulp, paper and other fibre-based products. Bio-energy industry with a total turnover of over 520 billion euros (around 18% of the bioeconomy). Certified wood products under experienced and international frameworks should be celebrated on their ability to sequester CO<sub>2</sub> by forest growth, Storage of the carbon of harvested circular Forest-Based products and substitution replacing carbon-intensive and fossil-based materials and energy with Forest-Based materials.

Founded on stakeholder consensus decision making, especially for smallholders, PEFC International is known for its bottom-up approach to developing and endorsing national forestry systems. PEFC services 48 national members and is the leading

forestry certification system globally, with 290 million hectares and over 20,000 companies certified.

For PEFC, an inclusive approach is critical in developing international standards that balance the three pillars of sustainability (environmentally sound, economically viable and socially just) without excluding national and international systems respecting countries sovereign capabilities. Through standards that are tailored to national operating standards and become integrated into the carbon cycle.

This presentation will cover both compliance and voluntary markets and their multiple mechanisms for synchronisation with the ecosystem markets for continuous improvement to meet stakeholders' needs and expectations implement sustainable forestry and provide access to trade for its many global members.





**SPEAKER**

Ms Charmaine Chee



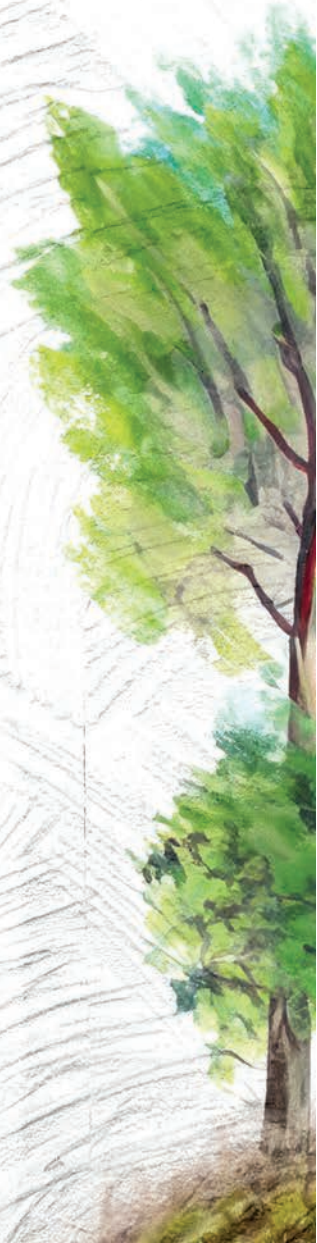
is a passionate advocate for a nature+ world, committed to protecting the environment and promoting responsible business practices. With over a decade of experience in the financial services sector, she decided to pivot her career towards sustainability. She served as a team member in the Corporate Governance & Sustainability department of Bursa Malaysia, CSR department of a conglomerate, and World Wide Fund for Nature (WWF) Asia Sustainable Finance team before joining FSC Malaysia in October 2020. In her current role, Ms Chee works towards implementing FSC's global strategy at the national level. She believes that sustainably sourced forest-based products, particularly those certified by the FSC, can play a critical role in creating resilient value chains, economy.



## Advancing Climate-smart Forestry with the Forest Stewardship Council

**SPEAKER**  
Ms Charmaine Chee

Sustainable forest management is a fundamental component of climate-smart forestry, as it provides the framework for balancing environmental, social, and economic objectives while mitigating climate change impacts and biodiversity loss. Overall, sustainable forest management is essential for achieving climate-smart forestry objectives by enhancing carbon sequestration, reducing emissions, conserving biodiversity, supporting local communities, and promoting effective governance of forest resources. By integrating sustainable practices into forest management, stakeholders can contribute to climate change mitigation efforts while promoting environmental, social, and economic sustainability.



## **MODERATOR**

### **Mr Lawrence Chia**

is currently the CEO of the Samling Group which has businesses in automobiles, properties, timber, infrastructure and oil palm with operations in a number of countries globally and has more than 15,000 employees. Since joining Samling 7 years ago, he has embarked on transforming the various businesses embedding ESG and Sustainability initiatives. Prior to joining Samling, Lawrence was the CEO of Deloitte China, and was a member of Deloitte Touche Tohmatsu Limited (DTTL) Executive Committee based in New York and DTTL Asia Pacific Executive Committee based in Hong Kong. He is a Chartered Accountant of the Institute of the Chartered Accountants in England and Wales, member of the Hong Kong Institute of Certified Public Accountants and also a member of the Malaysia Institute of Accountants.



## **SPEAKER**

### **Dr. Yuan Bing**

holds an MBA from the Chia Tai School of Management in Thailand and a PhD in clinical medicine from the Catholic University of San Antonio in Murcia, Spain. A multifaceted professional, he is a member of the China National High-tech Zone Upgrade Assessment Expert Group and an International Arbitration Mediator for the China Council for the Promotion of International Trade. He is also recognised as an IFM International Senior Financial Manager with fund practitioner qualifications registered with the Asset Management Association of China. In addition to these roles, he assumes key positions, serving as the Chairman of the Global Forest Products Green Supply Chain (Macau) Federation and a Consulting Researcher at the Department of International Cooperation of the National Development and Reform Commission. He is the Director of the National Risk Research Centre at the University of International Business and Economics and holds the title of Special Assistant to the President of the World Digital Economy Organisation (USA). He also serves as the Chairman of the Ejinhor Indonesia International Research Institute and holds the position of Deputy Director General at the International Cooperation and Development Agency of the Kingdom of



Cambodia. With extensive experience in country risk research, international economic cooperation mechanism research, and project management, he has led major national research groups and authored numerous papers and monographs, showcasing his commitment to advancing knowledge in his field.



## Green Finance for Sustainable Forest Management in Asia

### **SPEAKER** **Dr. Yuan Bing**

"Green Finance for Sustainable Forest Management in Asia" highlights the urgent need for more green finance to support forestry, particularly the private sector, so as to enable entrepreneurs, smallholders, indigenous communities, and other stakeholders to be compensated for their external costs and better incentivize their participation in sustainable forest management initiatives, thereby achieving the United Nations Sustainable Development Goals. The Global Green Supply Chain of Forest Products (Macao) Federation has put forward the concept "Green Finance for Green Supply Chain" at Global Legal and Sustainable Timber Forum 2023, and in an effort to promoting the construction of green supply chains among Africa, China and Europe, it's now exploring cooperation with financial institutions, ITTO, CAFI, and other organizations.

At present, co-ordination mechanisms have been established among upstream and downstream industrial clusters of the Africa-China timber supply chain, laying the groundwork for further efforts to introduce green finance to promote sustainable development of the supply chain. Based on these explorations and efforts, the Chairman of the Macao Federation will offer thoughts and suggestions on promoting sustainable forest management in Asia through green finance.





## **Managing the Forests to Ensure Sustainability for Future Generations and Maintain a Key Position for Tropical Timber on the Markets**

### **SPEAKER**

#### **Ms Françoise Van De Ven**

was elected on 28 January 2022 as President of ATIBT – International Technical Association of Tropical Timber. She was recently reappointed for a new 2-year term. She has a vast experience in the forest-timber sector, in business management as well as in national associations, before her election as President of ATIBT. During her nearly 20 years in Belgium and 25 years in Africa (Democratic Republic of Congo and Gabon), she built up an extensive international network and her knowledge of the countries of the Congo Basin, make her a contact person for stakeholders. From 1995 to 1997, she was also the Secretary General of the Belgian-Malaysian Chamber of Commerce.

Sustainable forest management and certification not only meet market needs, but also sustainable development for countries and their people. Wood is, unlike any other natural resource, the one that is renewable, and is considered in the coming years as the basic material for buildings and housing because of its contribution to the fight against global warming. How to manage the forest, reassure its sustainability but also the viability of this sustainable management while meeting the demands of the markets which are only increasing.





**SPEAKER**  
**Dr. Kevin Grace**

established and manages Global Forestry Services (GFS) group of companies since 2004. GFS is based in Malaysia and USA and has conducted forestry projects throughout East Asia, South America, Africa and South Pacific Islands. GFS is a professional forestry consulting services company that supports development of sustainable forest management systems, certification and legal verification of the forest and timber industries, forest investment systems, forest conservation and carbon projects, training for forest management and chain of custody systems. GFS is an auditor for the Sarawak Timber Legality Verification System (STLVS) and monitors the Sabah Timber Legality Assurance System (TLAS) in Malaysia and is currently developing the Lao TLAS system. He graduated from the University of Hawaii in 1995 with a PhD in Forest Ecology & Agroforestry, after completing his Masters Degree from Sul Ross State University in 1983 and Bachelors in Forestry from Stephen F Austin in 1980.

## **Sustainable Forest & Timber Resource Management**

Sustainability in management of forests and timber resources is the cornerstone to sustainability of the Forest & Timber Industries. Has the natural forests been managed sustainably? If not why and what is the result? Sustainability has many facets that must be addressed by both government regulations and the private sector managing and utilizing the forest resources. Sustainability goes well beyond timber but includes all aspects of forest services that relates to environmental and social needs including timber industry and employment. Discussion on sustainability of both the forest resources and the timber industry is critical in tackling current issues in managing land use that includes natural forests, timber plantations, social demands for agriculture and demands for timber products.





## **SPEAKER**

### **Prof. Dr. Claudia Romero**

has a foundation in tropical ecology with emphasis on applied interdisciplinary research. Her major research focus is on conservation and development tradeoffs related to land-use change and natural resource management. She has in-depth knowledge with extensive first-hand experience in Latin America, southern Africa, Indonesia, Australia, and Malaysia, with long-standing relationships with key actors in forest conservation. She has expertise in the evaluation of conservation interventions informed by familiarity with regional and national policies as well as with regulatory issues including measures designed to tackle illegal resource use. She has additional experience in coordinating multi-disciplinary research on the evaluation of incentives to enhance tropical forest conservation, improve local livelihoods, and minimize climate change threats.



## **Improve Forest Management Opportunities to Reduce Tropical Forest Degradation & Mitigate Climate Change**

**SPEAKER**  
**Prof. Dr. Claudia Romero**

Renewed attention to the roles that tropical forests can play to contribute to climate change mitigation needs to be met with decisive efforts to improve forestry practices on the ground. Forest degradation, which frequently results from even low-intensity selective logging, can be reduced but many challenges remain along the way.

This presentation outlines five well-established forestry practices as part of a nature-based solutions portfolio that through high-quality adoption, could deliver improved carbon benefits in demonstrable ways. We focus on two main results: reduced emissions from timber harvesting and other forest management activities and improved carbon removals. We use a theory-of-change framework to discuss assumptions underlying each of the practices and the institutional, policy, and technical aspects that could enable or limit their adoption.

As part of these analyses, special emphasis is given to the importance of clarifying legal regimes regarding carbon credits' ownership, identifying a set of conditions that could incentivise forestry sector actors to become engaged in carbon-based mechanisms for improved forestry, setting-up systems to guarantee the quality and credibility of the carbon credits resulting from practices' adoption, and setting in motion strategies to build long-lasting capacity of all involved so that there is increased likelihood that climate benefits will be realised and durable.





**MODERATOR**  
**Dr. Jason Hon**



received his doctorate degree from the Graduate School of Global Environmental Studies, Kyoto University, Japan and his MSc in Ecology from Aberdeen University, Scotland. He has worked in the field of conservation for almost 20 years. He has carried out camera trapping activities in various localities in Sarawak, including inside logging areas and oil palm plantations. Currently, he holds the position of Associate Director of Sarawak and Conservation Science, WWF-Malaysia. He oversees and coordinates the design and implementation of WWF-Malaysia's conservation strategies in Sarawak. He is a member of the WWF-Malaysia Management Team; and heads the Conservation GIS Unit. He provides support to civil societies and nature-based conservation bodies on project proposal development and technical

report writing; and conducts public talks and lectures on conservation related subject matters. He has served as a member of the Standards Review Committee of Malaysian Timber Certification Scheme; and RSPO Peatland Working Group; and is presently a member of the SDG CSO-Alliance Sarawak Chapter and also a Board member of FSC Malaysia.

**SPEAKER**  
**Mr Andrew Heald**



is the co-founder and Chief Operating Officer of iNovaland, an international company which restores and regenerates degraded forests and landscapes for the benefit of people, nature and the climate. He is also a member of the UK Government's "Expert Committee on Forest Science" and advises the University of Edinburgh on their Forests and Peatlands programme. He is based in Edinburgh, Scotland. He has over 25 years' experience in sustainable forest management and has worked across the UK, and in Finland, Uruguay and Ghana, and combines senior management experience with a solid grounding in practical forestry management. He is a Member of the Institute of Chartered Foresters, and spends far too much time on X/Twitter - @andyheald.

**Restoring Landscapes for  
People and Planet**

To tackle the nature and climate crises, there has to be a transition to a lower carbon bioeconomy. This will require more forests of all types contributing to replace high carbon non-renewable materials. Resilient forest landscapes of the future must include a mix of timber plantations, — community managed forests and natural forests to help tackle the nature and climate crises.

The presentation will explore how this transition can be achieved and just, by using blended finance to develop large scale forest landscape restoration projects which have communities at their centre. It will include practical examples from iNovaland's portfolio in Ghana, Brazil and Chile, and also the use of social learning to share knowledge and improve project outcomes.

iNovaland's mission is to restore and regenerate degraded forests and landscapes for the benefit of people, nature and the climate. We channel investments into innovative landscape restoration and nature-positive solutions, collaborating with a wide range of partners and putting communities at the heart of our work. Currently, we manage landscape restoration funds worth €20 million supporting forest and landscape restoration projects in West Africa and South America.

## **SPEAKER**

### **Mr Bounyadeth Phouangmala**



With nearly 30 years of experience, Mr Bounyadeth Phouangmala has navigated diverse roles from Project Assistant to Country Director at organisations like Australian Agency for International Development, United Nations Office on Drugs and Crime, World Bank, and currently the Regional Community Forestry Training Centre for Asia and the Pacific (RECOFTC). His expertise lies in sustainable environment management, community development, and social safeguards, engaging with stakeholders ranging from government agencies to private sectors. His commitment centres on successfully implementing policies and regulations, enhancing local communities' capacity, and improving livelihoods, especially for women and ethnic groups. Throughout his tenure at RECOFTC, he has effectively

managed projects, fostering partnerships between local authorities, communities, and private sectors. This includes initiatives like bamboo handicraft and teak plantation, contributing to national legislation development such as forest laws and guidelines. His focus remains on translating policies to local levels, empowering communities to responsibly manage natural resources and elevate their well-being.

### **RECOFTC Experience in Capacity Building and Rolling Out Free, Prior and Informed Consent (FPIC) Processes in Village Forest in Laos**

The presentation will cover first a brief on RECOFTC Lao PDR, then followed by the Lao country context and forestry background, then very brief on what is FPIC and why is it important for the sustainable forest projects including the REDD+ initiatives, what are the challenges. Then it will be followed by RECOFTC Laos's experiences and practices within the Lao context. This will cover the capacity building session run by RECOFTC for the key stakeholders involved, the preparation and implementation of the field works and working with local communities. Then the challenges and lesson learned before the last part - the summary, conclusion and recommendations.

**SESSION 4: COLLABORATION AND PARTNERSHIP  
– RESEARCH, RISK AND SAFEGUARDS**

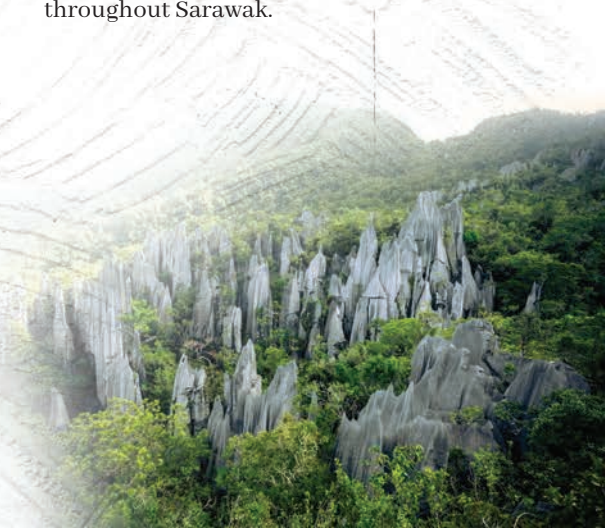
---

**SPEAKER**  
**Ms Evelyn Jugi**



is a Senior Researcher attached to the Forest Department Sarawak's International Affairs Division. She holds a Bachelor's Degree in Agriculture Science from the

Universiti Putra Malaysia. She has been involved in Sustainable Forest Management and Forest Management Certification since 1996 while working as a Site and Soil Classification counterpart on the GTZ-FOMISS project until 2000. She was later attached to the Forest Research Division as a Forest Soil surveyor until 2002. She joined Sarawak Forestry Corporation (SFC) (2003 - 2019). While in SFC, she performed various tasks as a Tree Breeding Manager, Forest Landscape Restoration Manager, Person in charge of the Research Division Strategic Planning and Forest Certification Coordinator. She has extensive experience in social engagement, particularly with forest-dependent communities throughout Sarawak.



## **Sustainable Forest Management (SFM) Practices in Sarawak - Local Communities Awareness and Participation**

**SPEAKER**  
**Ms Evelyn Jugi**

Sarawak has embraced and practised SFM since the early 1990s. The state commitment to SFM was duly enhanced with the implementation of the Forest Management Certification policy in 2019, making it mandatory for all long-term forest timber licence areas to get certified. Relevant stringent guidelines and procedures were developed, including a conflict resolution guideline and a multi-stakeholder consultation framework for a systematic and transparent approach to handling forest operation matters, particularly regarding social issues related to local communities. However, despite the available procedures and proper systems, challenges persist in the effective participation of local communities in SFM, particularly land tenure issues. Moreover, evolving environmental policies and the requirement for transparent and inclusive collaboration between local communities and governmental bodies

underscore the complexity of achieving sustainable forest management, especially in Sarawak, with a multi-racial population and diverse social setting. There is a need for a sustainable and equitable approach resonating with the diverse perspectives of local communities. Conflict resolution within a multi-stakeholder consultation framework is deemed crucial, addressing potential conflicts arising from differences in land-use priorities, economic aspirations, and conservation beliefs among diverse ethnic groups. Based on a random survey conducted by FDS in collaboration with the University Malaysia Sarawak (UNIMAS) on the Level of Awareness towards SFM and Forest Management Certification, the results showed that most of the area surveyed scored below 50% level of awareness. The results of the study will be discussed further in this paper. This paper also highlighted the multifaceted social dynamics, addressing issues such as cultural variations in land-use practices, differing conservation beliefs, and the impact of historical and socioeconomic factors on community engagement and participation, as well as sharing insights from the Forest Department's efforts and experiences towards achieving SFM practices in Sarawak, amid the abovementioned challenges and obstacles.

## Reduced Impact Logging (RIL) Guidelines for Ground-Based Timber Harvesting in the State of Sarawak Handbooks

The Reduced Impact Logging (RIL) is among the core activities driving Sustainable Forest Management in Sarawak. RIL is a carefully controlled, systematic process for timber harvesting operations that support sustainable forest management. It aims to minimise forest damage and adverse environmental and social impacts while promoting economic viability and efficiency. The RIL Guidelines practiced in Sarawak have undergone technical review and gap assessment through a collaboration project between the Food and Agriculture Organization (FAO) of the United Nations, supported by the EU-FLEGT Programme, and the Forest Department Sarawak (FDS).

To facilitate ground crews in carrying out specific tasks related to the implementation of RIL, FDS and Sarawak Timber Association have collaboratively produced seven (7) Handbooks. These Handbooks are derived from the RIL Guidelines for Ground-based Timber harvesting in the State of Sarawak.

Each handbook is available in English, and translated into Malay and Chinese, making the handbook multi-lingual and ensuring accessibility for a wider audience.



## High Conservation Value (HCV) Training Modules

The HCV Training Modules is produced through the collaboration of WWF-Malaysia, Forest Department Sarawak, Sarawak Forestry Corporation, and Sarawak Timber Association, with valuable inputs from the forest managers.

The training modules are tailored for use by Forest Management Units (FMUs), with contents suited to the context of Sarawak. Its goal is to enhance the HCV processes, concentrating on assessment, management, and monitoring. The production took about five years, and included consultation sessions, field testings, and reviews, with the final version completed in 2022.

With the launch of this document, Sarawak now has a practical guide for HCV processes. The document will be made widely available for use by HCV practitioners especially for FMUs.





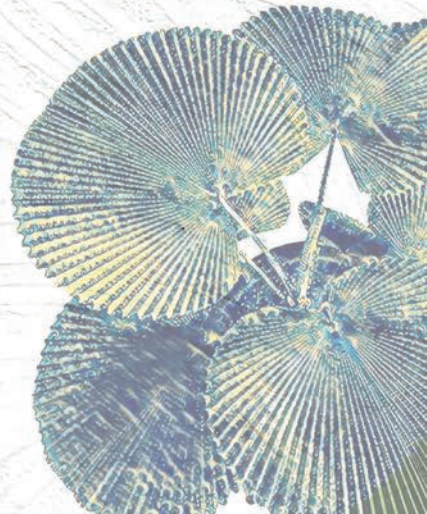
## Together Possible

Two simple words that fully encompass the work of WWF-Malaysia. We work hard to prove that a future in which people live in harmony with nature is not utopian, but actually achievable.

Colourful traditional handicrafts and organic agro-products from local communities, whom WWF-Malaysia have long term collaborations with, are making their appearances as souvenirs in this conference.

Watch out for the tags that accompany your souvenirs to know more of their background stories!

*Another thing! As part of WWF-Malaysia's 3R initiative, we would like to ask for your support by returning name tag holders (only) post-Conference at the registration table. The lanyard is souvenir for all to keep. Thank you in advance!*



## ORGANISING COMMITTEE

---

### **Advisors:**

Dato Henry Lau, Chairman of Sarawak Timber Association  
Datu Haji Hamden Bin Haji Mohammad, Director of Forests Sarawak  
Tan Sri Abdul Wahid Omar, Chairman of WWF-Malaysia

### **Chairperson:**

Ms Annie Ting, Chief Executive Officer of Sarawak Timber Association

### **Co-chairmen:**

Tuan Semilan Ripot, Deputy Director of Forests (Forest Management),  
Forest Department Sarawak  
Dr. Jason Hon, Associate Director, Sarawak and Conservation Science,  
WWF-Malaysia

### **Committee members:**

#### **Forest Department Sarawak:**

1. Mr. Ricky Jonathan Alek
2. Ms. Evelyn Jugi
3. Ms. Wilhelmina Cluny
4. Ms. Santey Berikom
5. Mr. Mohamad Hazrie Bin Siri
6. Mr. Wira Azizi Bin Kader
7. Mr. Vincent Wong Thian Fook
8. Ms. Angel Kho
9. Mr. Mohammad Ridzuan Bin Abdul Gapar
10. Mr. Afreene Cecilia Binti Tuah

#### **Sarawak Timber Association:**

11. Ms. Jaime Chan
12. Ms. Yii Yien Yien
13. Ms. Freda Emmanuel
14. Ms. Peggy Chew
15. Dr. Suzie Adee
16. Ms. Tchin Boon Ling
17. Mr. Law Hui Chau

#### **WWF-Malaysia**

18. Ms. Belinda Lip
19. Ms. Bessy Kho
20. Ms. Zora Chan
21. Ms. Esther Mawan
22. Mr. Jackshaman Ahed

### **Secretariat Contact:**

Dr. Suzie Adee : +60 10 969 9968  
Ms Santey Berikom : +60 13 372 0461  
Ms Bessy Kho : +60 16 882 5272



*We appreciate your participation  
in the proceedings. The  
international conference holds  
the potential to stimulate  
significant collaboration and  
proactive measures aimed at  
fostering sustainable  
management of tropical forests  
on a global scale.*



