



International
Tropical
Timber
Organization



ITTO

ITTO - An introduction

Steve Johnson, ITTO

The ITTO mandate



An intergovernmental organization promoting sustainable development through trade, conservation and best-practice management of tropical forests

ITTO's core priority

- Timber and NTFP production remains the biggest source of income from most tropical forests
- Promoting sustainable timber and NTFP production and sustainable domestic forest products industries is ITTO's core priority

The International Tropical Timber Organization (ITTO)

- Created by the **ITTA**, 1983 (1986-96)
- Continued under the **ITTA**, **1994** (1996-2011). Latest agreement **ITTA 2006** in force from Dec 2011
- A secretariat of 30 people based in Yokohama, Japan
- Member of Collaborative Partnership on Forests



The International Tropical Timber Council (ITTC)

- is the Organization's governing body
- meets annually to discuss policy issues and to set the project program



- active participation of NGOs (trade - TAG & environment- CSAG) is encouraged

Membership

- brings together tropical timber producers and consumers as equal partners in decision-making
- currently has 73 members (38 consumers, 35 producers)

ITTO membership represents:

- Almost all of world tropical timber trade
- Majority of the world's tropical forests

Objectives

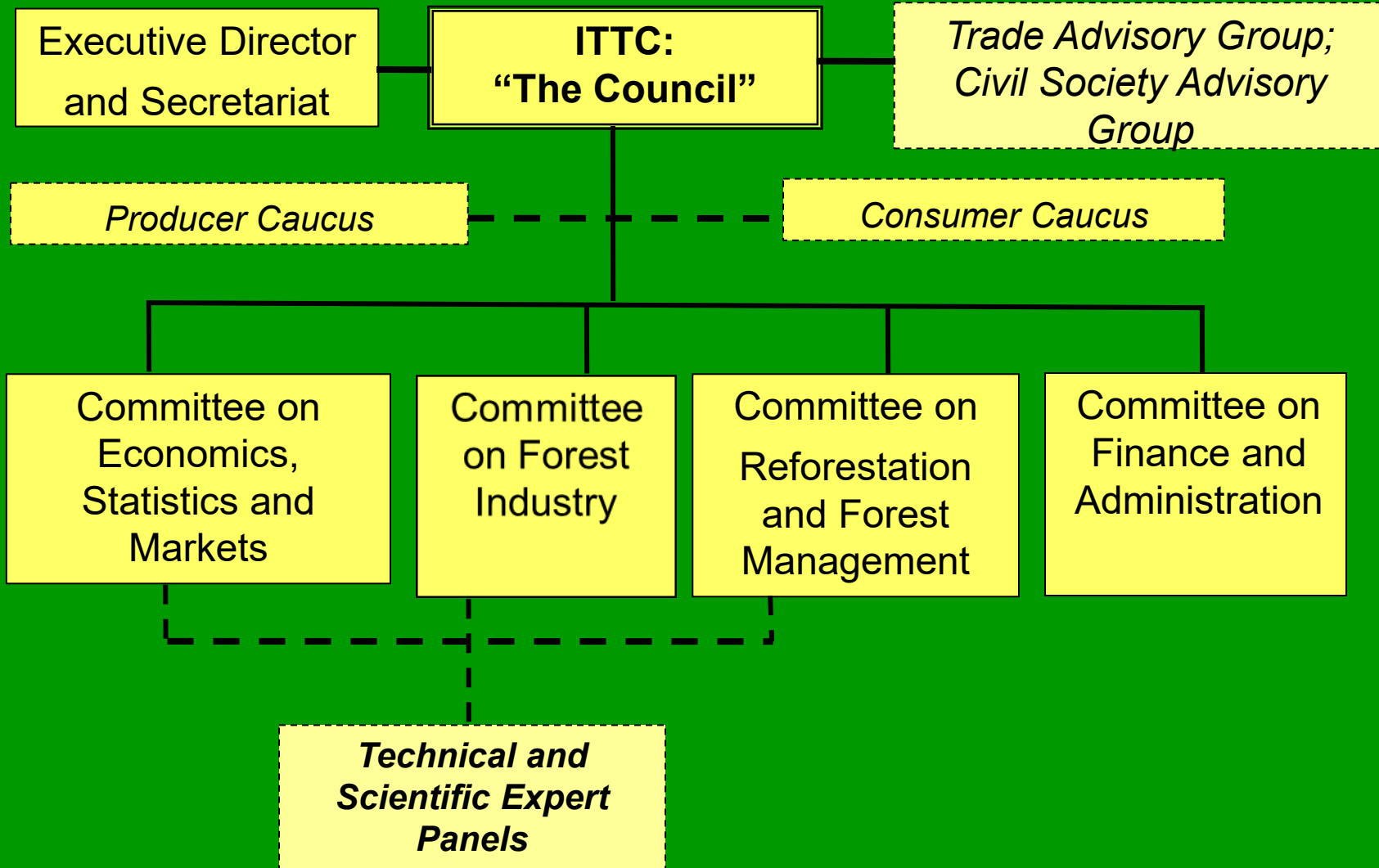
ITTA objectives are focused on:

- providing framework for dialogue on the forest products trade between members
- contributing to sustainable development through conservation and sustainable use
- achieving exports of tropical timber from sustainably managed sources

International
Tropical
Timber
Organization



ORGANIZATIONAL CHART



Funding

- Membership fees (to administrative account)
- Voluntary contributions made by any country or organization.

Top donors:

- Japan (60%)
- Switzerland (15%)
- USA (10%)

Others: EU, Norway, Germany, Netherlands, Korea, Australia, NZ, Finland, Sweden, UK, private sector

Resource use

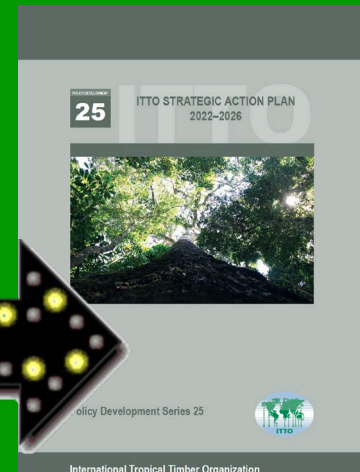
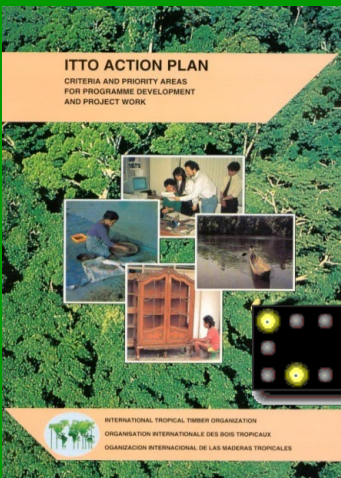
ITTO resources are used to:

- implement sustainable tropical forest management
- train the forest, industry and conservation workforces
- develop conservation reserves
- support community forest management
- improve trade transparency
- promote a sustainable tropical timber trade

ITTO Action Plans

Designed to provide guidance on the overall direction of Organization

- Yokohama Action Plan 2002-2007
- Libreville Action Plan 2008-2012
- Strategic Action Plan 2013-2018 (extended to 2021)
- Strategic Action Plan 2022-2026



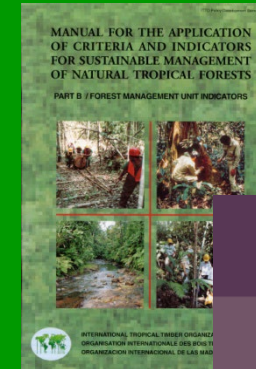
Policy Work: Development of Norms....

- Guidelines for the sustainable management of natural tropical forests (1990)
- Criteria for the measurement of sustainable tropical forest management (1992)
- Guidelines for sustainable management of tropical plantations (1993)
- Guidelines for conserving biodiversity in production forests (1993)
- Guidelines on fire management in tropical forests (1998)



... Policy Work: ...Development of Norms

- Criteria and indicators for sustainable management of natural tropical forests (1998)
- Manual for applying C&I (1999)
- Guidelines for the management of secondary tropical forests, tropical forest restoration and the rehabilitation of degraded forest lands (2002, revised in 2020)
- Criteria and indicators ATO-ITTO (2002)
- Revised criteria and indicators for the sustainable management of tropical forests (2005)
- Revised ITTO-IUCN biodiversity guidelines (2010)
- Revised ITTO SFM guidelines (2014)
- Revised ITTO C&I (2016)
- ITTO policy guidelines on gender equality and empowering women (2018)
- ITTO ESM guidelines (2020)
- ITTO C&I for African forests (2023)



The three working areas of ITTO

International
Tropical
Timber
Organization



Projects and Policy Work

Reforestation and Forest Management

- Forest mgmt. planning
- Reduced impact logging
- Silviculture
- Forest conservation
- Biodiversity conservation
- Forest restoration
- Reforestation
- Community forestry
- SFM demonstration areas
- C&I implementation
- Forests and climate change/REDD+



International
Tropical
Timber
Organization



Forest Industry

- Secondary and tertiary wood transformation
- Promotion of lesser known species
- Technology transfer
- Industrial planning
- Transformation of NTFP
- Forest bio-energy
- Environmental product declarations



Economics, Statistics and Markets

- Timber and forest products statistics
- Market transparency
- Forest statistics information systems in the countries
- Research on trade barriers, market access, timber flows, etc
- Studies on markets and trends
- Studies on illegal trade of timber and forest products
- Annual review of the world's timber situation
- Forest carbon/ecosystem services markets



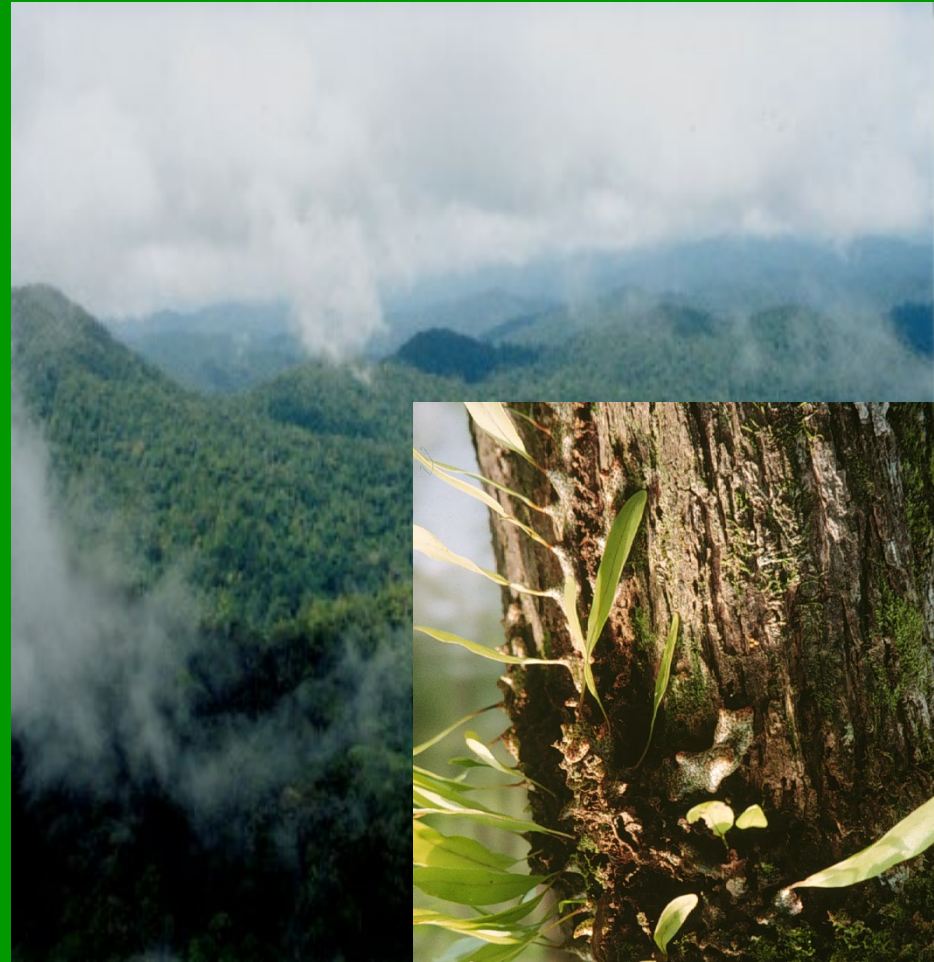
ITTO project portfolio today

- ITTO has provided grants worth over US\$400 million
- Over 1000 projects and activities funded
- About 30 projects/activities currently under way
- Projects employ many full-time professionals in the tropics

International
Tropical
Timber
Organization



ITTO



Year 2000 Objective

- Enshrined in ITTA, 1994 – ‘enhance capacity of members to implement strategy for achieving exports from sustainably managed forests by 2000’

→ **Not achieved so far....**

Progress made...

- New policies, strategies and institutional arrangements in many member countries
- Permanent Forest Estate (Committed forest) concept in most of ITTO member countries
- Improved participation of stakeholders/communities at local and regional level
- Extension of the area of community owned forests
- Extension of forest protected areas
- Use of C&I in nearly all member countries
- Standards for monitoring and auditing of forest management
- Forest management certification
- Increased forest products transformation in member countries



Unsolved problems

- Few changes in the forests
- Insufficient human and financial resources made available/competing land uses more attractive
- Insufficient implementation of guidelines and scientific knowledge
- Insufficient implementation of laws and regulations
- Problems with tenure, especially for communities and indigenous people
- Deficiencies in laws and policies, inconsistencies in policies in between sectors (e.g. forest/agri/economy)
- Lack of interest and motivation to make changes

Special Initiative: Criteria and indicators

- Contribution to the international dialogue on monitoring and assessment of forests
- ITTO C&I training program
- Harmonization process on C&I, e.g. ATO, ITTO, Tarapoto Process in the Amazon



Special Initiative: Certification

- Emergence of certification an additional reason for monitoring market constraints
- Overwhelming majority of certified forests in developed countries
- **Phased (Modular) Approaches**
- Four ITTO *International Workshops on Certification* – 2002 to 2005
- Country projects as follow-up
- Global studies of implementation
- Market access



Special Initiatives: Illegal logging

- SFM and forest conservation undermined by illegal logging and illegal trade
- Cooperation between members needed
- ITTO can provide assistance to national and local authorities through:
 - ✓ Information
 - ✓ Analyses
 - ✓ Recommendations
- Assistance to put recommendations in place
- Assistance to local communities
- Workshops and projects on FLE (including CITES)

International
Tropical
Timber
Organization



Special Initiative: Forest conservation

- Starting point for sustainable timber trade is an adequate land-use strategy
- Totally protected areas a key element of land-use strategy
- TPAs therefore at the heart of ITTO's mandate
- Establishing/managing transboundary and other conservation reserves through ITTO projects is a key part of the Organization's role

ITTO's transboundary conservation program (funded)

Region	Countries	Area
Lanjak-Entimau/ Betung Kerihun	Malaysia/Indonesia	0.98 m ha
Condor Range	Peru/Ecuador	2.42 m ha
Tambopata/ Madidi	Peru/Bolivia	2.85 m ha
Phatam	Thailand/Cambodia	0.13 m ha
Kayan Mentarang	Indonesia/Malaysia	1.40 m ha
Northern Congo	Congo/Cameroon/ CAR	1.70 m ha
Mengamé	Cameroon/Gabon	0.13 m ha
Total		9.61 m ha

Special Initiatives: Ecosystem Services

- Increasingly clear that SFM is technically feasible but revenues from timber alone are insufficient
- One of ITTO's tasks: to find new ways of complementing timber revenues with payments for global ecosystem services
- Forest mitigation options, in particular REDD+ and forest carbon sequestration (A/R and Forest restoration)



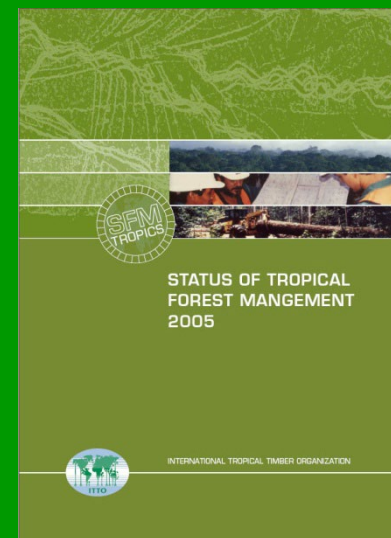
Special Initiatives: Program approach in member countries

Diagnostic visits to countries:

- ✓ Identify bottlenecks in achieving the Year 2000 objective
- ✓ Define adequate actions to achieve the Year 2000 objective
- ✓ Establish Year 2000/ITTO Boards

→ STATUS OF TROPICAL
FOREST MANAGEMENT REPORTS 2005
and 2011

International
Tropical
Timber
Organization



Special Initiatives: Secondary Forest Management and Forest Restoration

- Guidelines
- Field Manual
- Training
- Pilot projects

International
Tropical
Timber
Organization



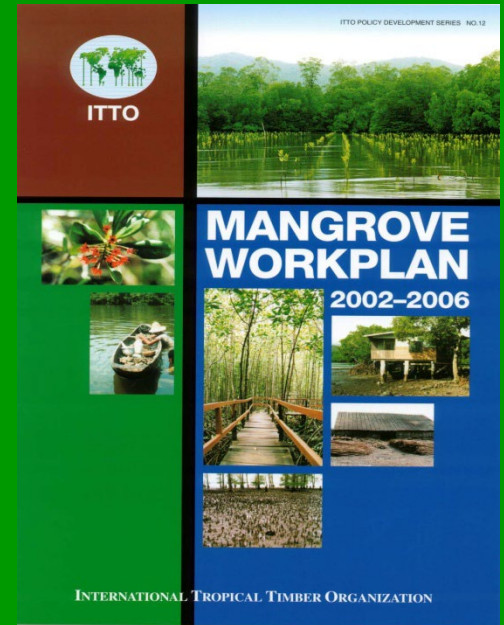
Special Initiatives

Mangrove Forests

Mangrove workplan;
focuses on conservation,
rehabilitation and
sustainable use of
mangrove ecosystems

Mangrove atlas

International
Tropical
Timber
Organization
ITTO



Other activities and initiatives

ITTO Fellowship Programme

- since 1990
- short to medium term training and education
- selection committee every 6 months
- short to medium term training and education
- up to 10,000 US\$ per fellowship
- total funding up to now more than 3.5 million US\$
- over 700 people benefited from ITTO fellowships





International
Tropical
Timber
Organization



ITTO

www.itto.int

[**johnson@itto.int**](mailto:johnson@itto.int)