



# ITTO: Activities 2020 & post-ITTC56

---

APEC EGILAT 19  
New Zealand  
19-20 February 2022

Sheam Satkuru  
Director/D1 Operations



SUSTAINABLE DEVELOPMENT GOALS  
17 GOALS TO TRANSFORM OUR WORLD



— GLOBAL —  
FOREST  
— GOALS —

INTERNATIONAL TROPICAL TIMBER ORGANIZATION (ITTO)

# Outcomes of ITTC-56



- Publication of **ITTO Guidelines on Forest Landscape Restoration in the Tropics** (CPF joint initiative: CIFOR, FAO, GEF, IUCN, IUFRO, UN-Environment, AFoCO, WeForest and WRI). See [www.itto.int/guidelines/](http://www.itto.int/guidelines/)
- **Decision on Implementation of ITTO's new Financing Architecture Phase II & Adoption of 4 Programmatic Lines\***
- **Approval of new Biennial Work Programme 2021-2022\***
- **Approved donor funding for 9 projects in 2020, 8 new projects in 2021 and 11 approved projects pending finance**
- **20 new Fellowships awarded, 45% women**

\*See: [www.itto.int/council\\_committees/decisions/](http://www.itto.int/council_committees/decisions/)

# Programme Lines and their goals approved at ITTC56

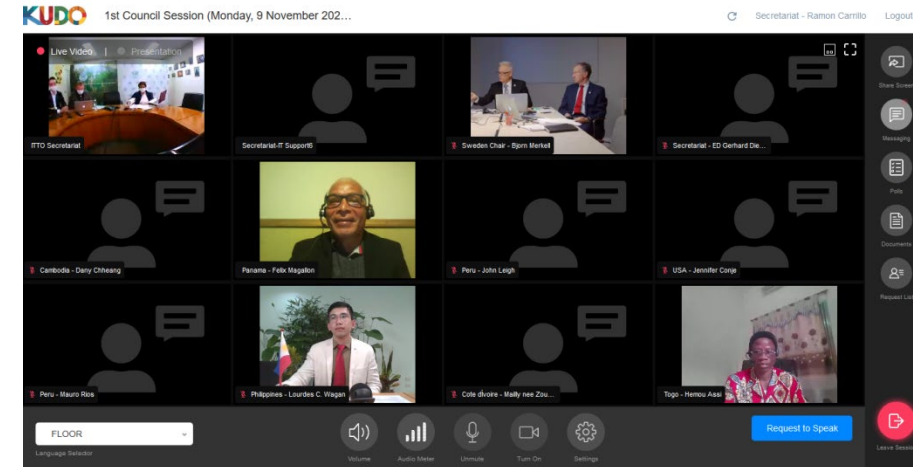


- 1. Legal & Sustainable Supply Chains (LSSC):** To enhance capacity in tropical timber supply chains to meet increasing demand for sustainability and assurance that products are from legal sources.
- 2. Conservation of Biodiversity and Ecosystem Services:** Maintain and/or enhance biodiversity and ecosystem services of tropical forests and forest landscapes, while maintaining the sustainable production of timber and other products and services.
- 3. Forest Landscape Restoration and Resilient Livelihoods:** Scale up the area of forest landscapes restored and increase the provision of goods and services from planted and restored forests, thereby generating opportunities for local employment.
- 4. Emerging Issues and Innovation:** Address emerging/urgent issues and innovation focused on achieving ITTA objectives that are not covered under the other programmatic lines.

# Impact of COVID-19 on ITTO in 2020



- **Virtual work:**
  - 56th Session of the International Tropical Timber Council [www.itto.int/ittc-56/](http://www.itto.int/ittc-56/)
  - Virtual Ad-hoc working groups: New ITTO financial architecture; Expert panels for technical appraisal of project proposals; Fellowship Selection Panel
  - Project steering committees (in some cases)
- **Delays in the implementation** of field work due to travel restrictions & social distancing
- International conferences/workshops/events **postponed**
- **Continued governance focus** – successful internal and external audits conducted



# Impact of COVID-19 on ITTO in 2020



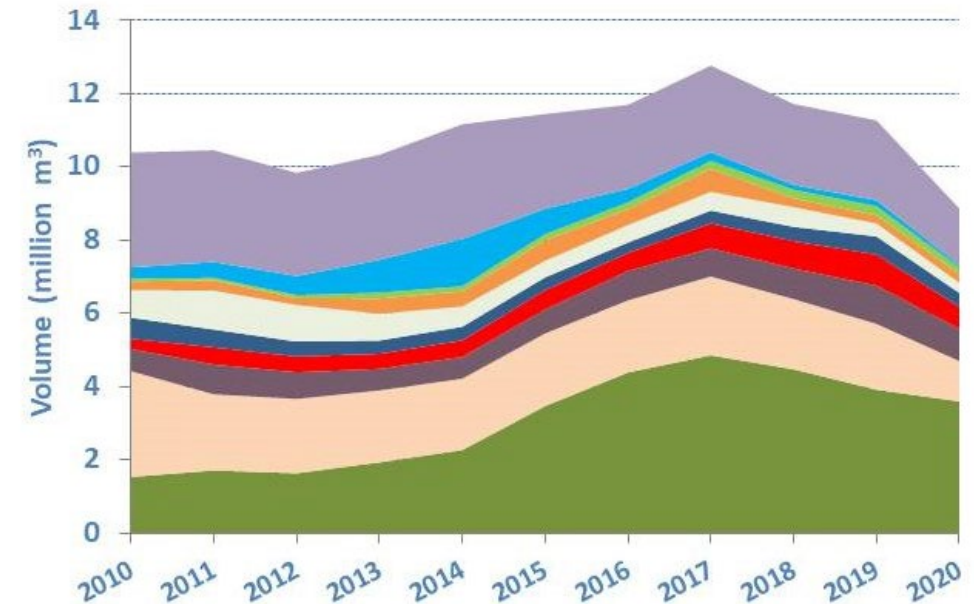
- **Regular activities continued:**
  - **Market Information Service** [www.itto.int/market information service/](http://www.itto.int/market_information_service/)
  - **Strong focus on communications and outreach:** constant updates on relevant news for the tropical timber sector and on reports from ITTO's field work:
    - ITTO's website [www.itto.int/news/](http://www.itto.int/news/)
    - Tropical Forest Update newsletter [www.itto.int/tropical forest update/](http://www.itto.int/tropical_forest_update/)
    - Publications:
      - Guidelines (FLR, Environmental and Social Management)
      - Technical reports (Forest product conversion factors, report of the International Forum: Together Towards Global Green Supply Chains)
    - Social media:
      - Facebook [www.facebook.com/International-Tropical-Timber-Organization-ITTO-761704093944532/](https://www.facebook.com/International-Tropical-Timber-Organization-ITTO-761704093944532/)
      - Instagram [www.instagram.com/itto\\_sfm/](https://www.instagram.com/itto_sfm/)
      - YouTube [www.youtube.com/user/ittosfm/videos](https://www.youtube.com/user/ittosfm/videos)
      - LinkedIn [www.linkedin.com/company/itto-sfm](https://www.linkedin.com/company/itto-sfm)
  - **Projects reported completed:**
    - Myanmar's national capacity in biodiversity conservation
    - Biodiversity conservation and SFM in Benin's sacred forest
    - Piloting a timber tracking system in Panama's Bayano and Darién regions
    - Mangrove conservation and SFM in Guatemala
    - Development of a national forest stock monitoring system in the Philippines

# Impact of COVID-19 on the tropical timber sector in 2020



- Drastic hit on tropical timber trade VS 2019:
  - Logs exports ↓ by 28%
  - Sawnwood ↓ by 16%
  - tropical plywood ↓ by 8%
- Major tropical exporters of secondary processed wood products except Viet Nam suffered double-digit declines (by value)
- Recovery to pre-crisis levels most likely to happen only by 2026
- Latin America has been most affected by the crisis, followed by Southeast Asia.

Tropical sawnwood exports, major tropical countries, 2010-2020



More details: [www.itto.int/ittc-56/day5/](http://www.itto.int/ittc-56/day5/)

[www.itto.int/news/2020/11/05/itto\\_modelling\\_examines\\_recovery\\_timeframe\\_in\\_tropical\\_timber\\_sector/](http://www.itto.int/news/2020/11/05/itto_modelling_examines_recovery_timeframe_in_tropical_timber_sector/)

[www.itto.int/top\\_stories/2020/05/08/survey\\_shines\\_light\\_on\\_covid\\_19\\_impacts\\_on\\_tropical\\_timber\\_sector/](http://www.itto.int/top_stories/2020/05/08/survey_shines_light_on_covid_19_impacts_on_tropical_timber_sector/)

# Activity Focus LSSC Programme



Enhance tropical timber supply and value chains, from the forests to the market, to achieve legality and sustainability:

- contributing to a bio-based circular economy, the SGDs and climate goals,
- meeting market requirements, and providing end-users with assurance that products are from legal and sustainable sources.



# Some concrete Outputs of PL1 LSSC



- Capacities of legal and sustainable supply chain enhanced and business collaboration and networking facilitated
- Tracking mechanisms to promote market transparency demonstrated and applied
- Incentive mechanisms for private sector identified

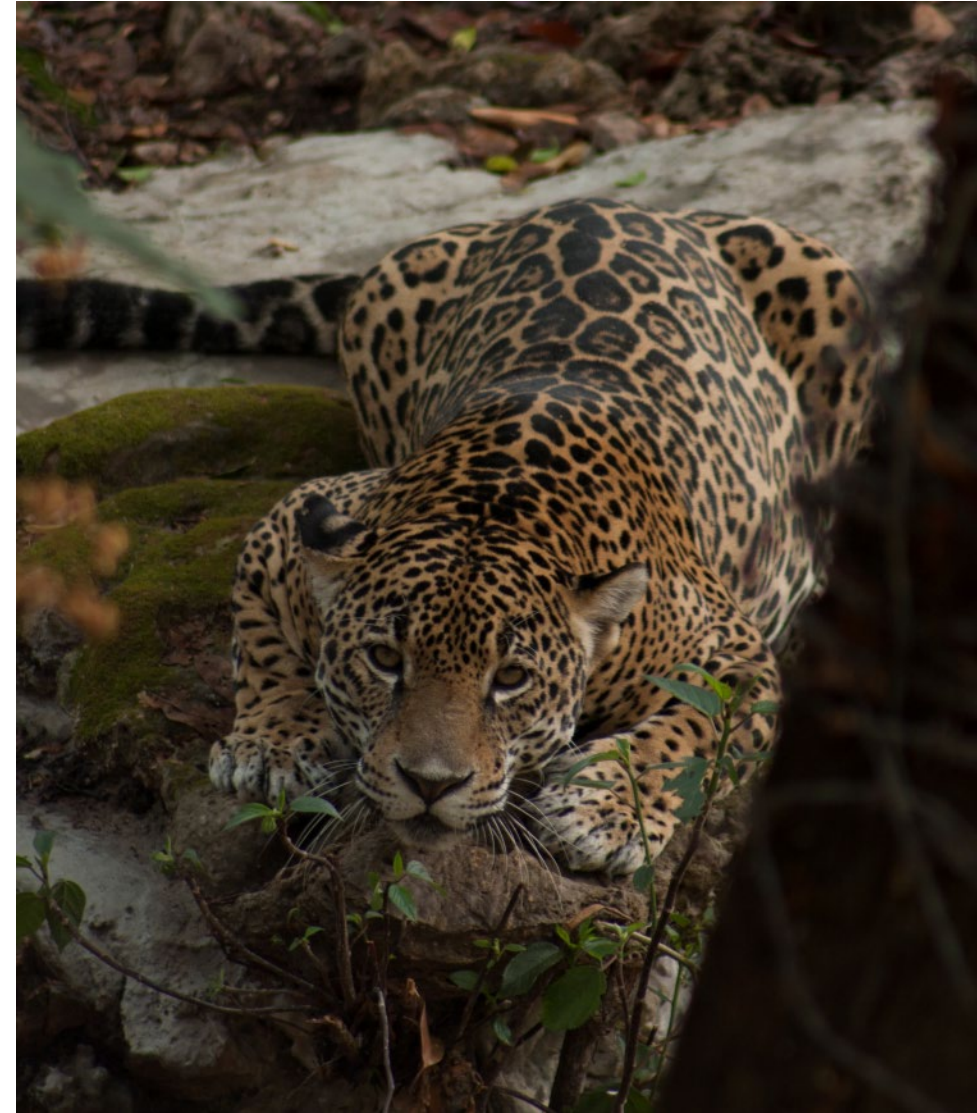




# PL2 Conservation of Biodiversity and the Provision of Ecosystem Services in Productive Forests



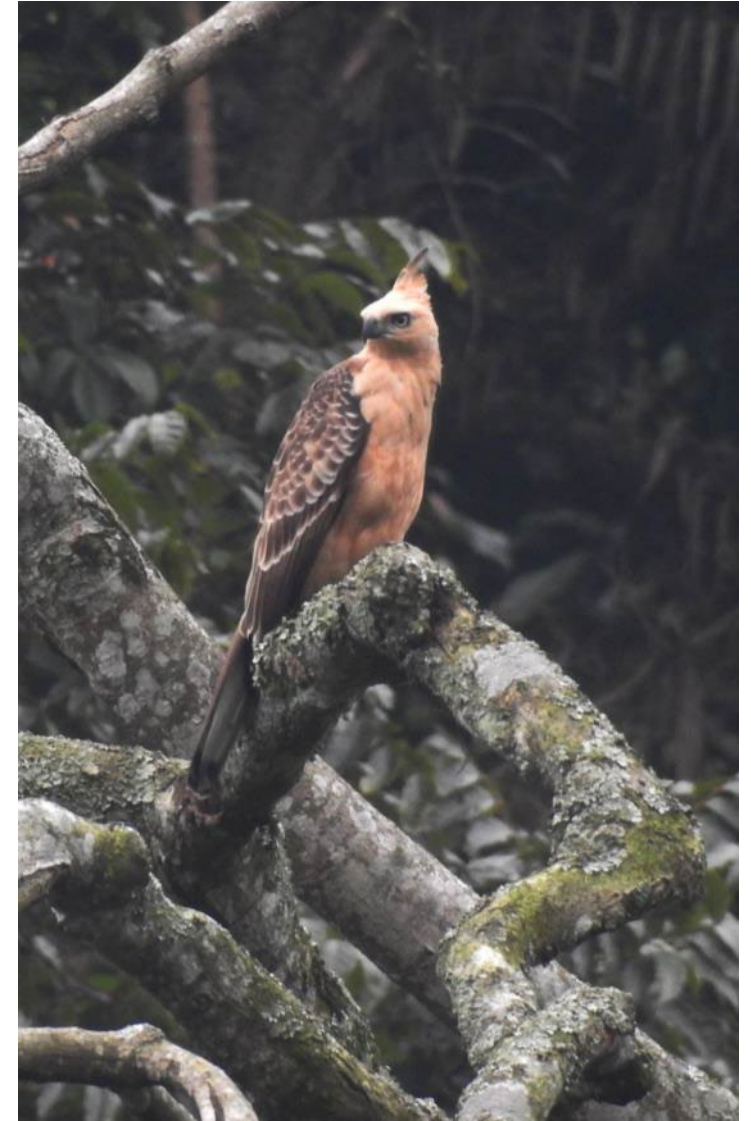
Strengthen the capacity of tropical timber-producing countries to conserve biodiversity in productive forests and landscapes while maintaining the sustainable production of timber and other products and services.



# Concrete Outputs – PL2 Conservation of Biodiversity and the Provision of Ecosystem Services ...



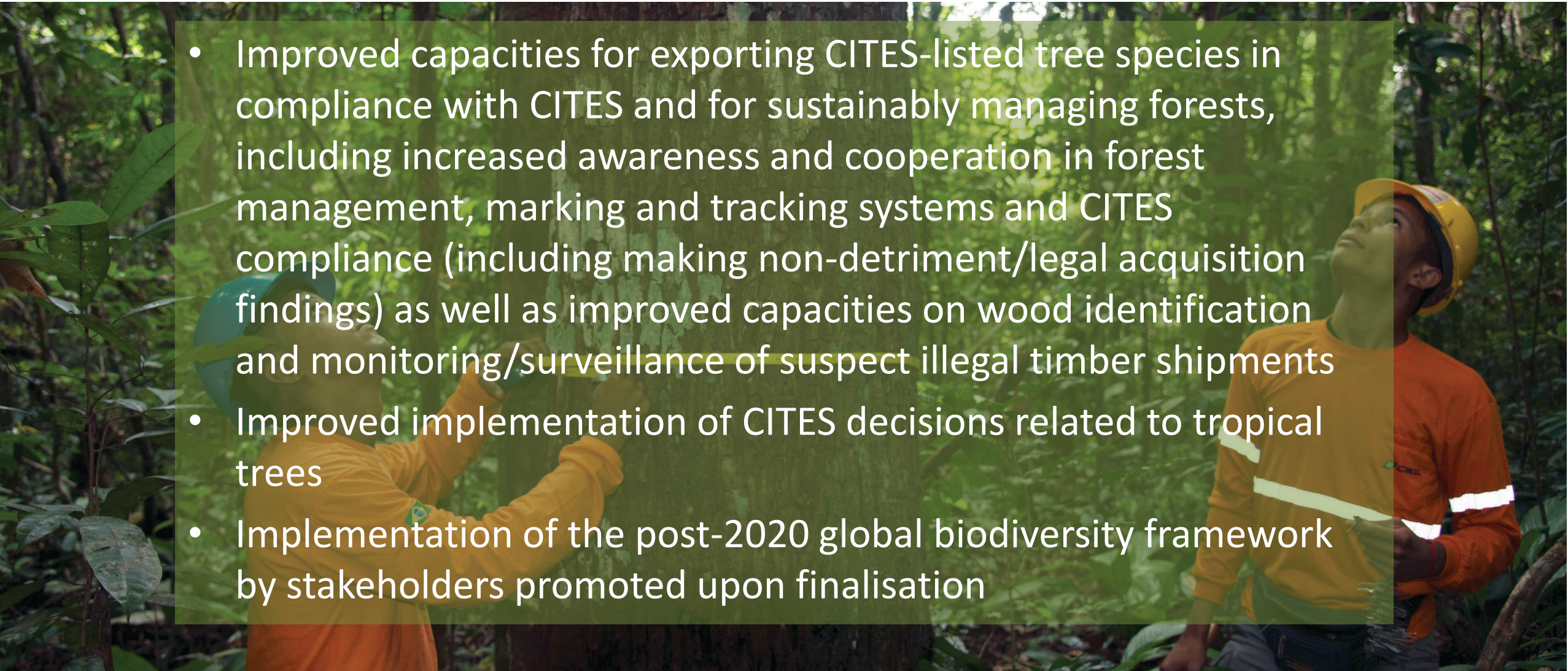
- Renewed collaboration between CBD and ITTO to 2025 [www.itto.int/news/2021/02/05/itto\\_and\\_biodiversity\\_convention\\_renew\\_collaboration\\_to\\_2025/](http://www.itto.int/news/2021/02/05/itto_and_biodiversity_convention_renew_collaboration_to_2025/)
- Enabled transboundary cooperation on the management of the Emerald Triangle between Cambodia and Thailand
- Improved cooperation and livelihoods for the conservation and sustainable management of the Tacaná Volcano area between Mexico and Guatemala and part of the Mesoamerican Biodiversity Corridor [www.itto.int/tfu/id=5907](http://www.itto.int/tfu/id=5907)
- Improved management of the Lanjak Entimau and Pulong Tau national parks between Indonesia and Malaysia [www.itto.int/tfu/id=5907](http://www.itto.int/tfu/id=5907)



# Concrete examples of the Conservation of Biodiversity and the Provision of Ecosystem Services in Productive Forests



- Improved capacities for exporting CITES-listed tree species in compliance with CITES and for sustainably managing forests, including increased awareness and cooperation in forest management, marking and tracking systems and CITES compliance (including making non-detriment/legal acquisition findings) as well as improved capacities on wood identification and monitoring/surveillance of suspect illegal timber shipments
- Improved implementation of CITES decisions related to tropical trees
- Implementation of the post-2020 global biodiversity framework by stakeholders promoted upon finalisation



# PL3 FLR and Resilient Livelihoods

---



Scale up the area subject to FLR and increase the provision of goods and services from planted and restored forests in line with the needs of local communities.

# Concrete Outputs – PL3 FLR and Resilient Livelihoods



- Improved capacity for implementation of REDD+ linked to local livelihoods in Cambodia and Ghana [www.itto.int/tfu/2020/07/24/when\\_communities\\_and\\_governments\\_collaborate/](http://www.itto.int/tfu/2020/07/24/when_communities_and_governments_collaborate/) [www.itto.int/tfu/2020/12/24/looking\\_for\\_the\\_positives/](http://www.itto.int/tfu/2020/12/24/looking_for_the_positives/)
- Plantation of teak in the savannahs of PNG by farmers
- Increased awareness of the importance of dry tropical forest in Peru [www.itto.int/tfu/2020/10/09/from\\_liability\\_to\\_asset/](http://www.itto.int/tfu/2020/10/09/from_liability_to_asset/)
- Restoration of Ecuador's Chimbo River Basin led by women <https://youtu.be/dEEDBDw9DAU>
- Addressing the sustainable use and conservation of Benin's sacred forests [www.itto.int/tfu/2020/07/24/when\\_communities\\_and\\_governments\\_collaborate/](http://www.itto.int/tfu/2020/07/24/when_communities_and_governments_collaborate/)

# Concrete Outputs – PL4 Emerging Issues



- New ITTO projects funded to support forest fire management in Indonesia and Peru:
  - Use of integrated, participatory approaches to build capacity in fire prevention and management and help improve early-warning systems and increased public awareness of fire management.
  - Both projects, with a combined value of USD 2.2 million, are being funded as part of the Japanese Government's emergency assistance



# ITTO in the international arena



Continued active engagement with the Collaborative Partnership on Forests (CPF):

- Work with FAO & CIFOR: **SW4SW Joint Initiative**
- Work with FAO and IUFRO: **Forest Education Initiative**
- Work with CBD: **Joint ITTO/CBD Collaborative Initiative for Tropical Forest Biodiversity**
- CITES: **CITES Tree Species Programme**
- World Bank: **Incentives and Fiscal Mechanisms for a Sustainable Forest Sector**
- CIFOR, FAO, GEF, IUCN, IUFRO, UN-Environment, AFoCO, WeForest and WRI: **Guidelines for Forest Landscape Restoration in the Tropics**
- All CPF members: Wangari Maathai 'Forest Champions' Award and Joint statement "Towards sustainability: forest solutions in response to the COVID-19 pandemic"





<http://www.youtube.com/user/it>



@itto\_sfm



itto\_sfm



International Tropical Timber Organization

[www.itto.int](http://www.itto.int)  
[satkuru@itto.int](mailto:satkuru@itto.int)