

*Webinar FAO Food and Agriculture
Organization of the United Nations
24th June 2020*

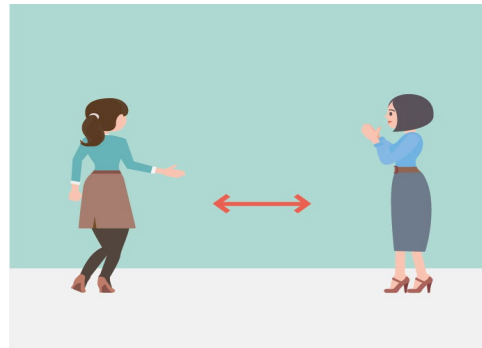
*The global forest sector & COVID
19 : navigating a sustainable
future in an economically &
socially constrained world
BUILD BACK BETTER*

Congo Basin - Gabon



PRESENTATION :

1. Impact COVID 19 – Congo Basin
2. Impact COVID 19 – Gabon
3. Short, medium and long term approach by private sector and stakeholders



Impact COVID 19 – Congo Basin



COUNTRY	BORDERS CLOSED	FOREST SECTOR IN ACTIVITY	EXPORTS	Technical leave and/or dismissal
D.R. Congo	Yes	No	Decreased	Yes
R. Congo	Yes	Yes	Decreased	Yes
Cameroun	Yes	Yes	Decreased	Yes
Gabon	Yes	Yes	Decreased	Yes



There will be a “before” and “after” COVID

Impact COVID 19 – Congo Basin

Main problems :

- Transport
- Logistics
- Important protection/prevention measures to be put in place
- Lac of protection/prevention material (masks, thermo-flash, hand-sanitizer gel)
- Availability/minimum service of forest administration/customs
- The negative effects of COVID-19 and the considerable economical repercussions on the private sector (cancellation of existing contracts, no new contracts, low prices, etc.)



Impact COVID 19 – Gabon

- Companies are operating with many difficulties, mainly logistics are a problem.
- After a total containment of 15 days, return to partial confinement with a reminder of the protection/ prevention barriers (social distancing, hand washing and compulsory wearing of masks).
- Concerning exports, lack of empty containers and ships cancelling calls
- timber industry companies are ensuring the adoption of barrier measures for their employes forest sites, the life bases, factories as well as assisting the local administrations and NGOs upon demand



Short, medium- and long-term approach by private sector and stakeholders

Due to the economical crises it is difficult to determine which are the short, medium and long term approaches. Every approach seems urgent, important and most of all needed

- Assist professional associations and companies with continued support to sustainable forest management plans, especially now that ***second rotations are at the horizon*** (2026 in Gabon)
- Take into consideration that projects need to be executed on the field and should not be crippled by quarterly, bi-annual and yearly reports. ***Administrative tasks are taking too much time*** and the effectiveness of the projects is prejudiced



Short, medium- and long-term approach by private sector and stakeholders

- Maintain continued support and assistance *to coach companies towards Sustainable Forest certification* (FSC and PEFC)
- Sustainable Forest Management is more and more demanding, costs are *rising but this does not reflect in the price* as customers are not aware of high costs
- *Markets must be maintained for sustainable and legally logged African timber* in order to secure jobs in the timber sector in producing countries *avoiding more economic refugees*
- *Recognition of private SFM certification schemes in the EUTR* (APV FLEGT agreements) as it will facilitate the procedures to be put in place



Short, medium- and long-term approach by private sector and stakeholders

- Assist private and public sector putting in place ***PPP projects to Manage wood waste (developing sustainable forest-based bio economies)***
- ***Edit model/blueprint for projects for private sector initiatives in connection with climate change and SDGs,*** (easily adaptable, taking into consideration country, area and size of the forest permit)
- In a complementary way, ***better integration into the SW4SW program by associating Private sector through their associations*** in the panel of initiatives that SW4SW intends to develop, example “FAIR & PRECIOUS”, umbrella brand of ATIBT



Françoise Van de Ven
Chairmain/UFIGA

Email :
f.vandeven@ufiga.org

Website :
www.ufiga.org



Thank you!

