



GTTN

Global Timber  
Tracking Network

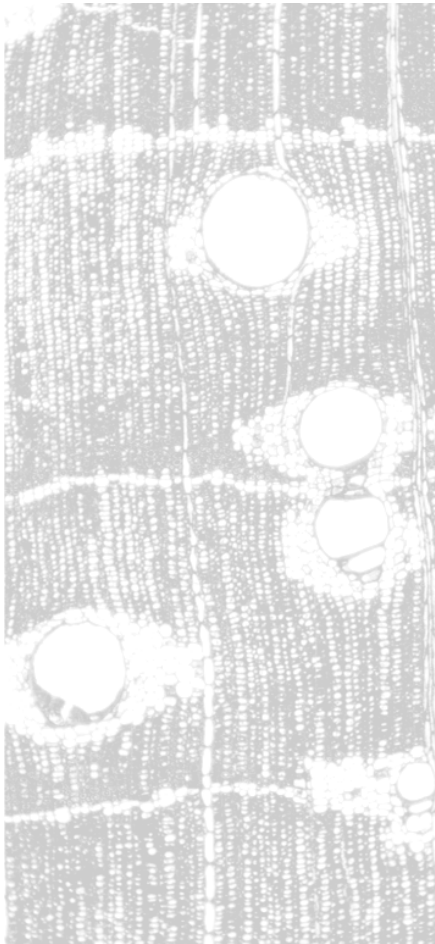
Wood Identification  
Technology: tools to  
support legal trade

GTTN at ITTC 55 – Trade and markets  
3 December 2019- Lomé, Togo

Jo Van Brusselen, Jose Bolaños, Nele  
Schmitz, Yitagesu Tekle, GTTN  
Secretariat

[www.globaltimbertrackingnetwork.org](http://www.globaltimbertrackingnetwork.org)

# GTTN in a nutshell



- Started in 2013 coordinated by Bioversity International
- Network of 200+ researchers, labs and authorities worldwide
- Advancing **innovative science-based approaches to verify trade claims of wood-based products**



## Two key end-user groups



- law enforcement, customs, CITES authorities, competent authorities, judiciary;



- due diligence: economic operators' own due diligence systems; SFM and CoC due diligence certifiers;

# Be sure a trade claim is correct?



## Product type



## Trade claim: geographical origin and tree species

Bill of Lading Template

### Bill of Lading Short Form

Carrier: \_\_\_\_\_ Date: \_\_\_\_\_  
 Bill of Lading #: \_\_\_\_\_ PO #: \_\_\_\_\_  
 Order #: \_\_\_\_\_  
 Shipper/Consignor: \_\_\_\_\_  
 Consignee: \_\_\_\_\_  
 Instructions: \_\_\_\_\_

Item Code	Details	Quantity	Weight (Unit)

Annex 2 Standard CITES form

**CONVENTION ON INTERNATIONAL TRADE IN ENDANGERED SPECIES OF WILD FAUNA AND FLORA**

A. Importer (name and address): \_\_\_\_\_

B. Country of import: \_\_\_\_\_

C. Special conditions: \_\_\_\_\_

For the purposes of control of methods to verify that the transport conditions comply with the 3rd, 4th, 5th, 6th, 7th, 8th, 9th, 10th, 11th, 12th, 13th, 14th, 15th, 16th, 17th, 18th, 19th, 20th, 21st, 22nd, 23rd, 24th, 25th, 26th, 27th, 28th, 29th, 30th, 31st, 32nd, 33rd, 34th, 35th, 36th, 37th, 38th, 39th, 40th, 41st, 42nd, 43rd, 44th, 45th, 46th, 47th, 48th, 49th, 50th, 51st, 52nd, 53rd, 54th, 55th, 56th, 57th, 58th, 59th, 60th, 61st, 62nd, 63rd, 64th, 65th, 66th, 67th, 68th, 69th, 70th, 71st, 72nd, 73rd, 74th, 75th, 76th, 77th, 78th, 79th, 80th, 81st, 82nd, 83rd, 84th, 85th, 86th, 87th, 88th, 89th, 90th, 91st, 92nd, 93rd, 94th, 95th, 96th, 97th, 98th, 99th, 100th, 101st, 102nd, 103rd, 104th, 105th, 106th, 107th, 108th, 109th, 110th, 111th, 112th, 113th, 114th, 115th, 116th, 117th, 118th, 119th, 120th, 121st, 122nd, 123rd, 124th, 125th, 126th, 127th, 128th, 129th, 130th, 131st, 132nd, 133rd, 134th, 135th, 136th, 137th, 138th, 139th, 140th, 141st, 142nd, 143rd, 144th, 145th, 146th, 147th, 148th, 149th, 150th, 151st, 152nd, 153rd, 154th, 155th, 156th, 157th, 158th, 159th, 160th, 161st, 162nd, 163rd, 164th, 165th, 166th, 167th, 168th, 169th, 170th, 171st, 172nd, 173rd, 174th, 175th, 176th, 177th, 178th, 179th, 180th, 181st, 182nd, 183rd, 184th, 185th, 186th, 187th, 188th, 189th, 190th, 191st, 192nd, 193rd, 194th, 195th, 196th, 197th, 198th, 199th, 200th, 201st, 202nd, 203rd, 204th, 205th, 206th, 207th, 208th, 209th, 210th, 211st, 212nd, 213th, 214th, 215th, 216th, 217th, 218th, 219th, 220th, 221st, 222nd, 223rd, 224th, 225th, 226th, 227th, 228th, 229th, 230th, 231st, 232nd, 233rd, 234th, 235th, 236th, 237th, 238th, 239th, 240th, 241st, 242nd, 243rd, 244th, 245th, 246th, 247th, 248th, 249th, 250th, 251st, 252nd, 253rd, 254th, 255th, 256th, 257th, 258th, 259th, 260th, 261st, 262nd, 263rd, 264th, 265th, 266th, 267th, 268th, 269th, 270th, 271st, 272nd, 273rd, 274th, 275th, 276th, 277th, 278th, 279th, 280th, 281st, 282nd, 283rd, 284th, 285th, 286th, 287th, 288th, 289th, 290th, 291st, 292nd, 293rd, 294th, 295th, 296th, 297th, 298th, 299th, 300th, 301st, 302nd, 303rd, 304th, 305th, 306th, 307th, 308th, 309th, 310th, 311st, 312nd, 313th, 314th, 315th, 316th, 317th, 318th, 319th, 320th, 321st, 322nd, 323rd, 324th, 325th, 326th, 327th, 328th, 329th, 330th, 331st, 332nd, 333rd, 334th, 335th, 336th, 337th, 338th, 339th, 340th, 341st, 342nd, 343rd, 344th, 345th, 346th, 347th, 348th, 349th, 350th, 351st, 352nd, 353rd, 354th, 355th, 356th, 357th, 358th, 359th, 360th, 361st, 362nd, 363rd, 364th, 365th, 366th, 367th, 368th, 369th, 370th, 371st, 372nd, 373rd, 374th, 375th, 376th, 377th, 378th, 379th, 380th, 381st, 382nd, 383rd, 384th, 385th, 386th, 387th, 388th, 389th, 390th, 391st, 392nd, 393rd, 394th, 395th, 396th, 397th, 398th, 399th, 400th, 401st, 402nd, 403rd, 404th, 405th, 406th, 407th, 408th, 409th, 410th, 411st, 412nd, 413th, 414th, 415th, 416th, 417th, 418th, 419th, 420th, 421st, 422nd, 423rd, 424th, 425th, 426th, 427th, 428th, 429th, 430th, 431st, 432nd, 433rd, 434th, 435th, 436th, 437th, 438th, 439th, 440th, 441st, 442nd, 443rd, 444th, 445th, 446th, 447th, 448th, 449th, 450th, 451st, 452nd, 453rd, 454th, 455th, 456th, 457th, 458th, 459th, 460th, 461st, 462nd, 463rd, 464th, 465th, 466th, 467th, 468th, 469th, 470th, 471st, 472nd, 473rd, 474th, 475th, 476th, 477th, 478th, 479th, 480th, 481st, 482nd, 483rd, 484th, 485th, 486th, 487th, 488th, 489th, 490th, 491st, 492nd, 493rd, 494th, 495th, 496th, 497th, 498th, 499th, 500th, 501st, 502nd, 503rd, 504th, 505th, 506th, 507th, 508th, 509th, 510th, 511st, 512nd, 513th, 514th, 515th, 516th, 517th, 518th, 519th, 520th, 521st, 522nd, 523rd, 524th, 525th, 526th, 527th, 528th, 529th, 530th, 531st, 532nd, 533rd, 534th, 535th, 536th, 537th, 538th, 539th, 540th, 541st, 542nd, 543rd, 544th, 545th, 546th, 547th, 548th, 549th, 550th, 551st, 552nd, 553rd, 554th, 555th, 556th, 557th, 558th, 559th, 560th, 561st, 562nd, 563rd, 564th, 565th, 566th, 567th, 568th, 569th, 570th, 571st, 572nd, 573rd, 574th, 575th, 576th, 577th, 578th, 579th, 580th, 581st, 582nd, 583rd, 584th, 585th, 586th, 587th, 588th, 589th, 590th, 591st, 592nd, 593rd, 594th, 595th, 596th, 597th, 598th, 599th, 600th, 601st, 602nd, 603rd, 604th, 605th, 606th, 607th, 608th, 609th, 610th, 611st, 612nd, 613th, 614th, 615th, 616th, 617th, 618th, 619th, 620th, 621st, 622nd, 623rd, 624th, 625th, 626th, 627th, 628th, 629th, 630th, 631st, 632nd, 633rd, 634th, 635th, 636th, 637th, 638th, 639th, 640th, 641st, 642nd, 643rd, 644th, 645th, 646th, 647th, 648th, 649th, 650th, 651st, 652nd, 653rd, 654th, 655th, 656th, 657th, 658th, 659th, 660th, 661st, 662nd, 663rd, 664th, 665th, 666th, 667th, 668th, 669th, 670th, 671st, 672nd, 673rd, 674th, 675th, 676th, 677th, 678th, 679th, 680th, 681st, 682nd, 683rd, 684th, 685th, 686th, 687th, 688th, 689th, 690th, 691st, 692nd, 693rd, 694th, 695th, 696th, 697th, 698th, 699th, 700th, 701st, 702nd, 703rd, 704th, 705th, 706th, 707th, 708th, 709th, 710th, 711st, 712nd, 713th, 714th, 715th, 716th, 717th, 718th, 719th, 720th, 721st, 722nd, 723rd, 724th, 725th, 726th, 727th, 728th, 729th, 730th, 731st, 732nd, 733rd, 734th, 735th, 736th, 737th, 738th, 739th, 740th, 741st, 742nd, 743rd, 744th, 745th, 746th, 747th, 748th, 749th, 750th, 751st, 752nd, 753rd, 754th, 755th, 756th, 757th, 758th, 759th, 760th, 761st, 762nd, 763rd, 764th, 765th, 766th, 767th, 768th, 769th, 770th, 771st, 772nd, 773rd, 774th, 775th, 776th, 777th, 778th, 779th, 780th, 781st, 782nd, 783rd, 784th, 785th, 786th, 787th, 788th, 789th, 790th, 791st, 792nd, 793rd, 794th, 795th, 796th, 797th, 798th, 799th, 800th, 801st, 802nd, 803rd, 804th, 805th, 806th, 807th, 808th, 809th, 810th, 811st, 812nd, 813th, 814th, 815th, 816th, 817th, 818th, 819th, 820th, 821st, 822nd, 823rd, 824th, 825th, 826th, 827th, 828th, 829th, 830th, 831st, 832nd, 833rd, 834th, 835th, 836th, 837th, 838th, 839th, 840th, 841st, 842nd, 843rd, 844th, 845th, 846th, 847th, 848th, 849th, 850th, 851st, 852nd, 853rd, 854th, 855th, 856th, 857th, 858th, 859th, 860th, 861st, 862nd, 863rd, 864th, 865th, 866th, 867th, 868th, 869th, 870th, 871st, 872nd, 873rd, 874th, 875th, 876th, 877th, 878th, 879th, 880th, 881st, 882nd, 883rd, 884th, 885th, 886th, 887th, 888th, 889th, 890th, 891st, 892nd, 893rd, 894th, 895th, 896th, 897th, 898th, 899th, 900th, 901st, 902nd, 903rd, 904th, 905th, 906th, 907th, 908th, 909th, 910th, 911st, 912nd, 913th, 914th, 915th, 916th, 917th, 918th, 919th, 920th, 921st, 922nd, 923rd, 924th, 925th, 926th, 927th, 928th, 929th, 930th, 931st, 932nd, 933rd, 934th, 935th, 936th, 937th, 938th, 939th, 940th, 941st, 942nd, 943rd, 944th, 945th, 946th, 947th, 948th, 949th, 950th, 951st, 952nd, 953rd, 954th, 955th, 956th, 957th, 958th, 959th, 960th, 961st, 962nd, 963rd, 964th, 965th, 966th, 967th, 968th, 969th, 970th, 971st, 972nd, 973rd, 974th, 975th, 976th, 977th, 978th, 979th, 980th, 981st, 982nd, 983rd, 984th, 985th, 986th, 987th, 988th, 989th, 990th, 991st, 992nd, 993rd, 994th, 995th, 996th, 997th, 998th, 999th, 1000th

D. Number of the transaction (add receipt): \_\_\_\_\_ E. Security stamp(s): \_\_\_\_\_

PERMIT/CERTIFICATE No. \_\_\_\_\_ Original

1. Valid until: \_\_\_\_\_

2. Valid until: \_\_\_\_\_

3. Expiry date: \_\_\_\_\_

4. Expiry date: \_\_\_\_\_

5. Name, address, routing instructions and country of management authority: \_\_\_\_\_

<p>1 Issuing authority Name: _____ Address: _____ Authority registration number: _____</p>	<p>2 Importer Name: _____ Address: _____ Country of destination and ISO Code: _____ Part of exchange: _____ Issue date: _____</p>
<p>3 Issuing licence number: _____</p>	<p>4 Date of expiry: _____</p>
<p>5 Country of export: _____</p>	<p>6 Means of transport: _____</p>
<p>7 ISS State: _____</p>	<p>8 ISSP Number: N/A. Tax Paper Number: _____</p>

# Seeking a holistic approach



## Authentication question

Taxonomic identity of a specimen

Geographic origin of a specimen

## Analysis requirements

On site identification

Time-frame for identification

Resolution of geographic origin

Cost per specimen

## Test specimen characteristics

Type of test specimen

Minimal test specimen size

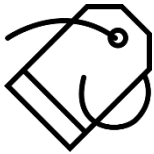
# GTTN work programme



Service Provider Directory



Reference database



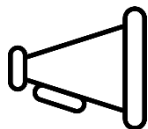
Guidelines, standardization



Market assessment



Priority species list



Communication, advocacy



## How to find required expertise ?



The **Service Provider Directory (SPD)** will provide information on available scientific methods and tools to verify declared tree species and / or geographic origin

Development so far with inputs from USFS-common names database, WRI, Traffic, IAWA



# GTTN Reference Database



## For participating laboratories:

- Query existing reference data
- For any wood-ID method
- Data holders define access condition

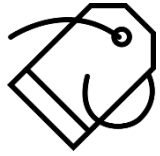
## Data repository

- Metadata in one secure location
- Central and distributed data

- Exploring cooperation with TreeGenesdb.org
- Fulfills design requirements – not only DNA!
- TreeGenes systems architecture allows for a separate GTTN platform to be developed



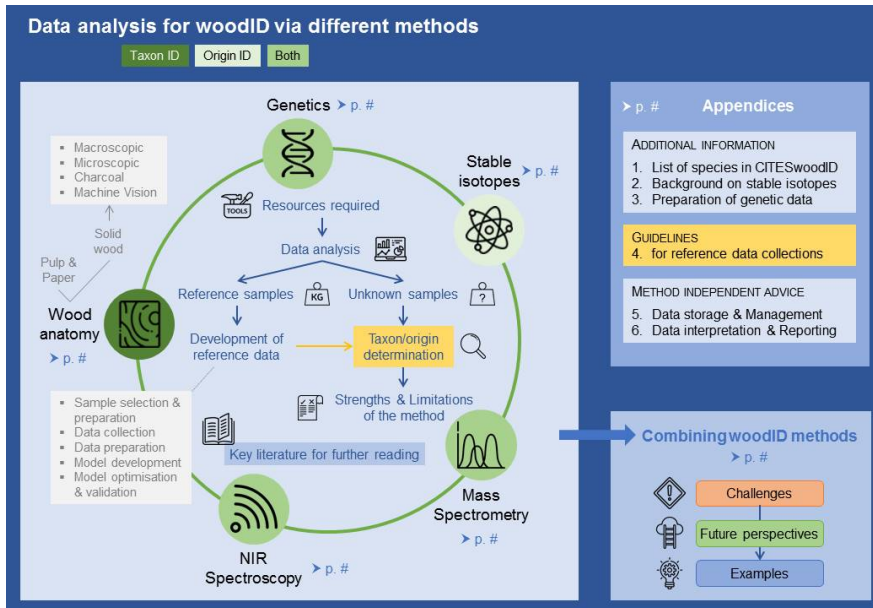




# Standardization, Harmonization



- General sampling guide
- Timber Tracking Tool Infogram
- Data analysis guidelines (work in progress)
- Lab quality indicators



**GTTN**  
Global Timber Tracking Network

**The Timber Tracking Tool Infogram**  
Overview of wood identification methods' capacity

April 2019

[www.globaltimbertrackingnetwork.org](http://www.globaltimbertrackingnetwork.org)

**GTTN**  
Global Timber Tracking Network

**General sampling guide**

Task 2: Development of international standards and GTTN database

Activity 2.1: International standards

Deliverable 2.1.1: Reviewed GTTN guidelines on sampling of reference material

Date: 7 February 2019

**EFI** Federal Ministry of Food and Agriculture

The following document is an output from GTTN, which is coordinated by the European Forest Institute (EFI) and funded by the German Federal Ministry for Food and Agriculture (BMFSFJ).



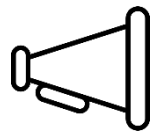
# Species prioritization



DOI: 10.13140/RG.2.2.10132.04483

An updated list was needed to reflect:

- CITES updated priority species
- Infractions /e.g. prosecutions data
- Lesser known timber species are being traded in increasing volumes
- Markets changing due to legislation, demography, developing economies etc.
- Species priorities can reduce when reference data are created.



# Communication, networking, outreach



- Meetings: Working Groups, Task Forces and Regional Workshops

Yaoundé, 2018



Lima, 2018



Beijing, 2019





# Research stories from around the world



Government organisation



NGO



University



Research Institute



Freelancer

Company



# Media outreach

 Nature News and Comment   
7. April · 


Scientists are optimistic that innovative techniques can pinpoint the true origin of timber.



Toby Smith/EIA

NATURE.COM

**Tree sleuths are using DNA tests and machine vision to crack timber crimes**

 **EARTH FOCUS**

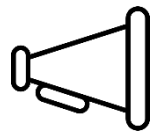


**Building a Future: Scientists Build Lumber Library to Identify Poached Wood**



**With genetic identification, they can even tell which country the timber comes from**





# Communication, networking, outreach



[www.globaltimbertrackingnetwork.org](http://www.globaltimbertrackingnetwork.org)

ResearchGate, @GTTNetwork on Twitter  
Newsletter



HOME ABOUT US ▾ PROJECTS ▾ RESOURCES ▾ NEWS EVENTS GET INVOLVED ▾ GTTN DATABASE

**WELCOME  
TO JOIN  
GTTN !**

**About us**

GTTN (Global Timber Tracking Network) is an open, informal network of scientists and other stakeholders who are working on technologies and policies to reduce illegal logging and associated trade worldwide

[Read more +](#)

ABOUT US PROJECTS NETWORKING DATABASE RESOURCES



For further info, please contact:

[jo.vanbrusselen@efi.int](mailto:jo.vanbrusselen@efi.int), GTTN coordinator & advocacy topics  
[nele.schmitz@thuenen.de](mailto:nele.schmitz@thuenen.de), WG1, standardisation topics manager  
[simo.varis@efi.int](mailto:simo.varis@efi.int), WG2, information systems developer  
[jose.bolanos@efi.int](mailto:jose.bolanos@efi.int), WG3, communications and events manager



With support from



Federal Ministry  
of Food  
and Agriculture

by decision of the  
German Bundestag

The objective of the Global Timber Tracking Network (GTTN) is to promote the operationalization of innovative tools for wood identification and origin determination, to assist the fight against illegal logging and related trade around the globe.

GTTN is an open alliance that cooperates along a joint vision and the network activities are financed through an open multi-donor approach. GTTN phase 2 coordination (2017-2019) is financed by the German Federal Ministry of Food and Agriculture (BMEL).