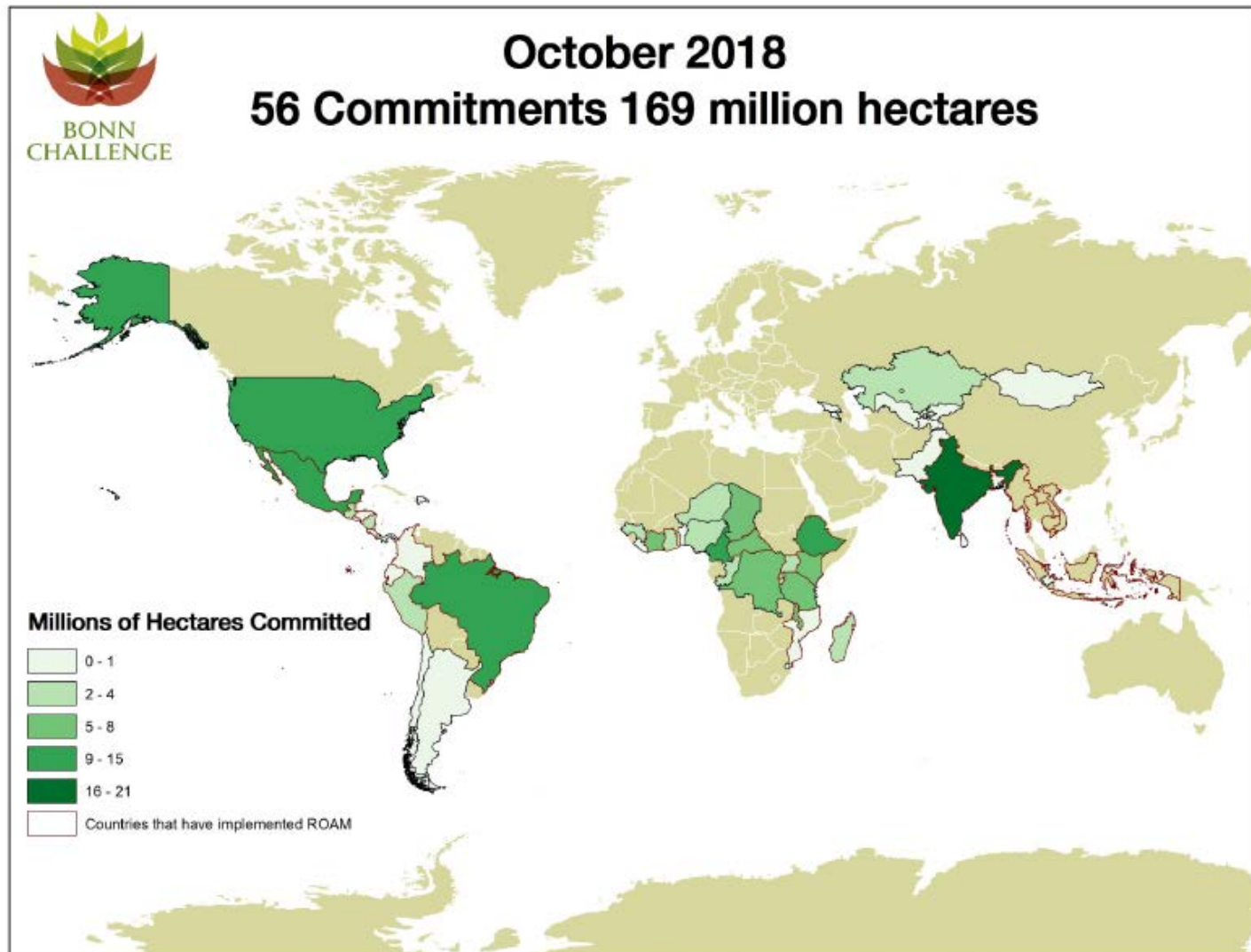


The image is a composite illustration on a brown desk background. On the left is a large world map titled 'FOREST AND LANDSCAPE RESTORATION OPPORTUNITIES'. The map uses a color-coded system to show areas suitable for different types of restoration. Below the map is a legend with two columns: 'FOREST AND LANDSCAPE RESTORATION OPPORTUNITIES' and 'OTHER AREAS'. The first column includes 'Wide-scale restoration' (dark green), 'Mosaic restoration' (light green), and 'Remote restoration' (yellow). The second column includes 'Agricultural lands' (orange), 'Recent tropical deforestation' (red), 'Urban areas' (grey), and 'Forest without restoration needs' (white). Above the legend are five circular icons representing different ecosystems: a tree, two fish, a house, a cow, and wheat stalks. To the right of the map is a book cover for 'A guide to the Restoration Opportunities Assessment Methodology (ROAM)'. The cover features the IUCN and World Resources Institute logos, a 'ROAD-TO-TEST EDITION' seal, and an illustration of four people sitting around a table, reviewing documents. Below the illustration, it says 'Assessing forest landscape restoration opportunities at the national or sub-national level'. To the right of the book are several desk items: a green-rimmed coffee cup, a black calculator, and two pens (one blue, one silver). At the bottom of the book cover, there are logos for IUCN, World Resources Institute, South Dakota State University, and others.

Bonn Challenge



Moving from pledges to actions



168
million ha
already
pledged
to the
Bonn
Challenge

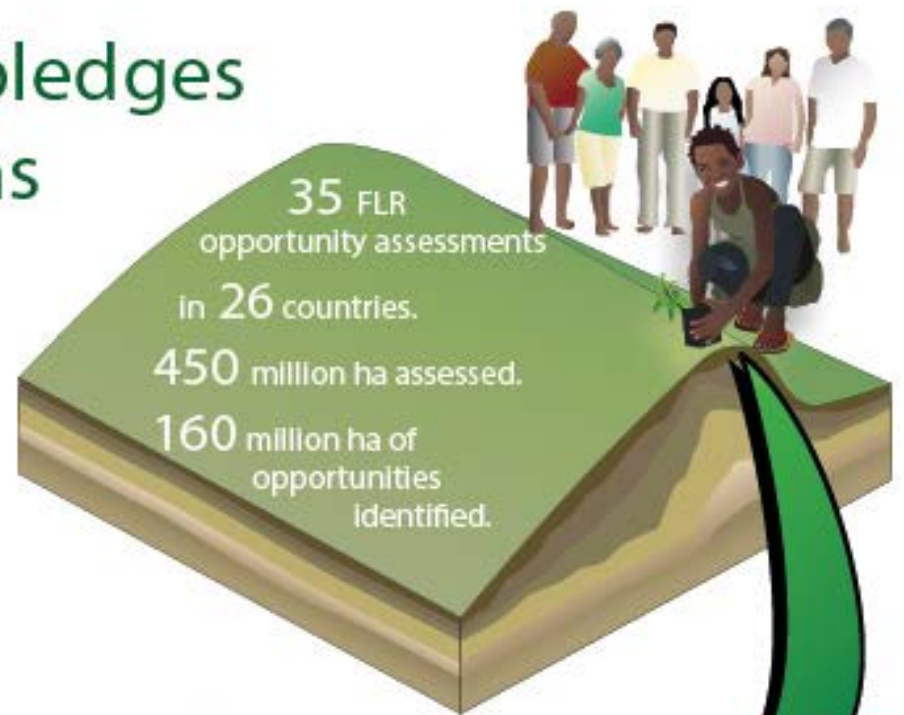


FLR in international commitments:
UNFCCC Nationally Determined Contributions
CBD biodiversity targets

27 jurisdictions with FLR opportunity
assessment-inspired strategies /policies

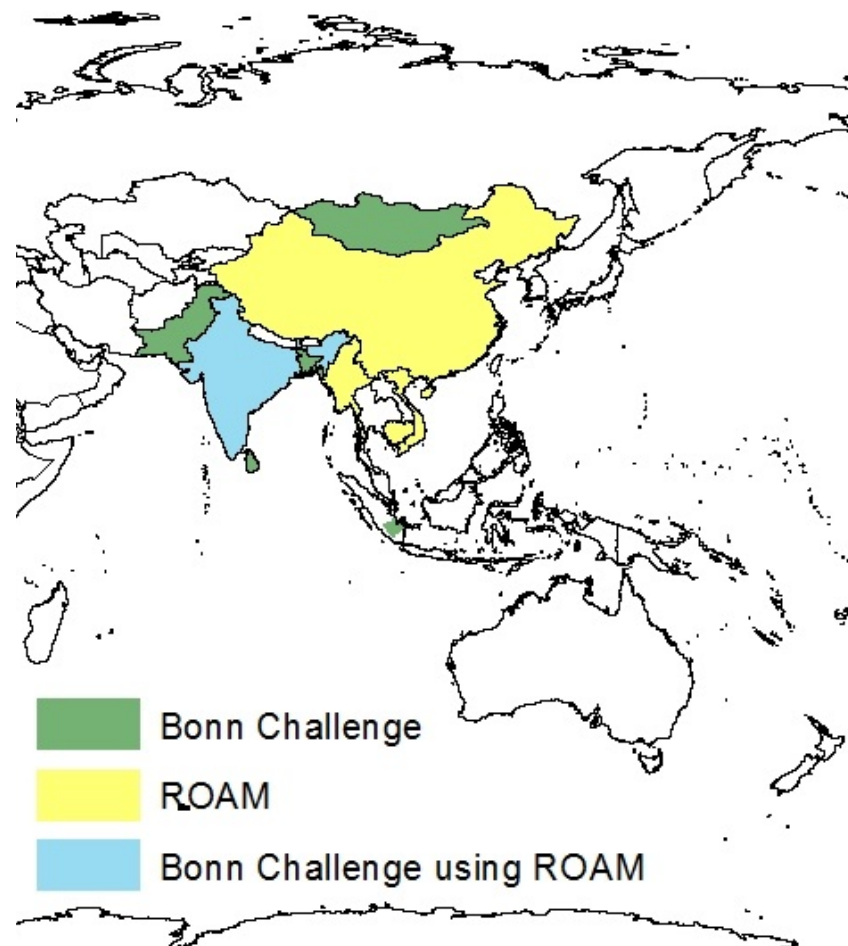


Financial doors opening to
mobilise FLR investment



FLR and ROAM in Asia

- **Five** countries committed **24** million ha restoration target to Bonn Challenge
- At least **six** have completed ROAM to prioritize actions and investment for landscape restoration: Cambodia, China, India, Indonesia, Myanmar, Vietnam.

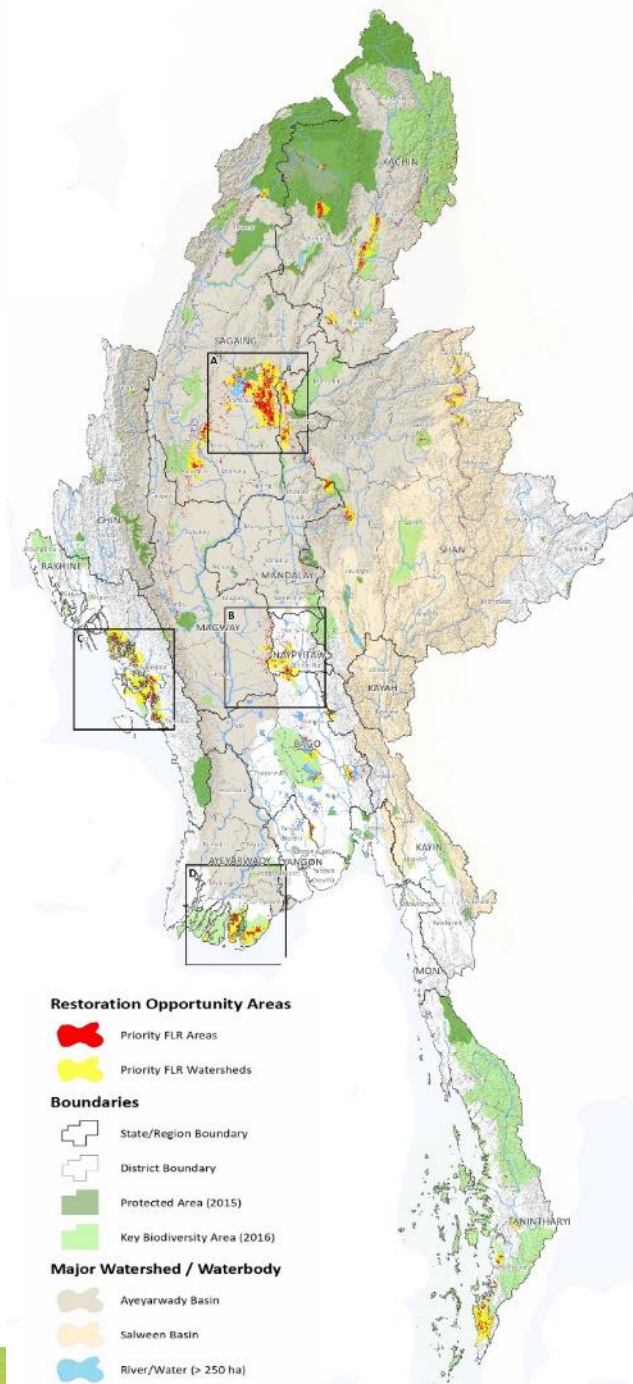


	Vietnam	Myanmar	Cambodia	India	Indonesia	China
Area (ha)	473,630	66,976,025	3,704,738	5,348,300	5000	4,800,000
Scale	provincial	national	provincial	provincial	local	multiple
Population (thousands)	623 k (2016)	52,890 k (2016)	1,698 k (2008)	10,086 k (2011)	128 k (2010)	20,000 k (2016)
FLR Priority area (ha)	54,000	713,000	271,000		2493	



The Myanmar ROAM process identifies ...

- Up to **2.5 million hectares** in Myanmar as FLR opportunity areas
- **713,000 ha** as priority FLR areas, or 1,9 million hectares watershed areas if taking the river basin boundaries;
- Benefits include for watershed protection (key for sustainable agriculture development and drinking water security), biodiversity conservation and reversing forest loss.



The Indonesia ROAM process found...

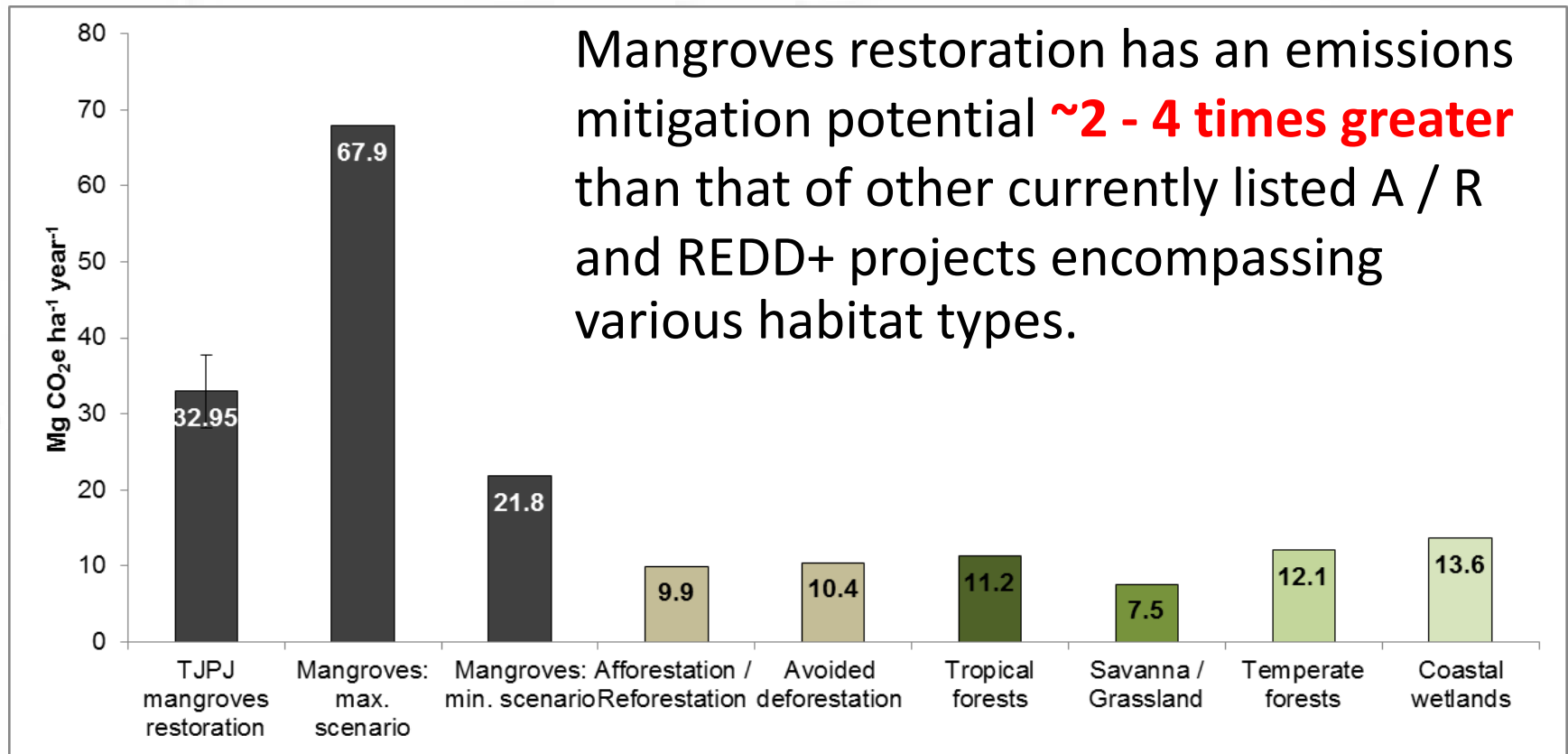
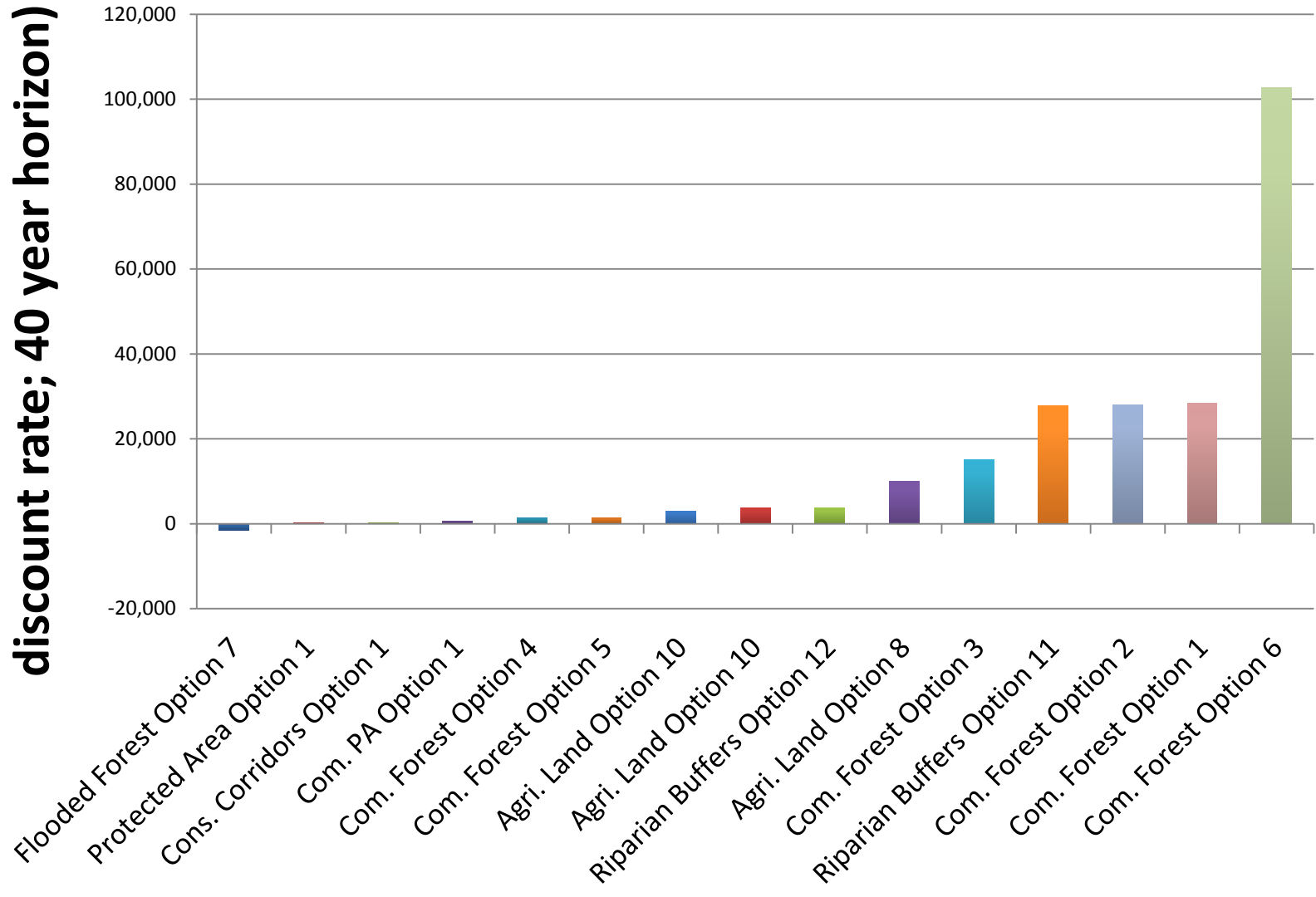


Figure: Comparison of potential net ERR resultant from mangrove restoration of aquaculture ponds at Tanjung Panjang with other A / R and REDD+ projects
(Cameron, in press)

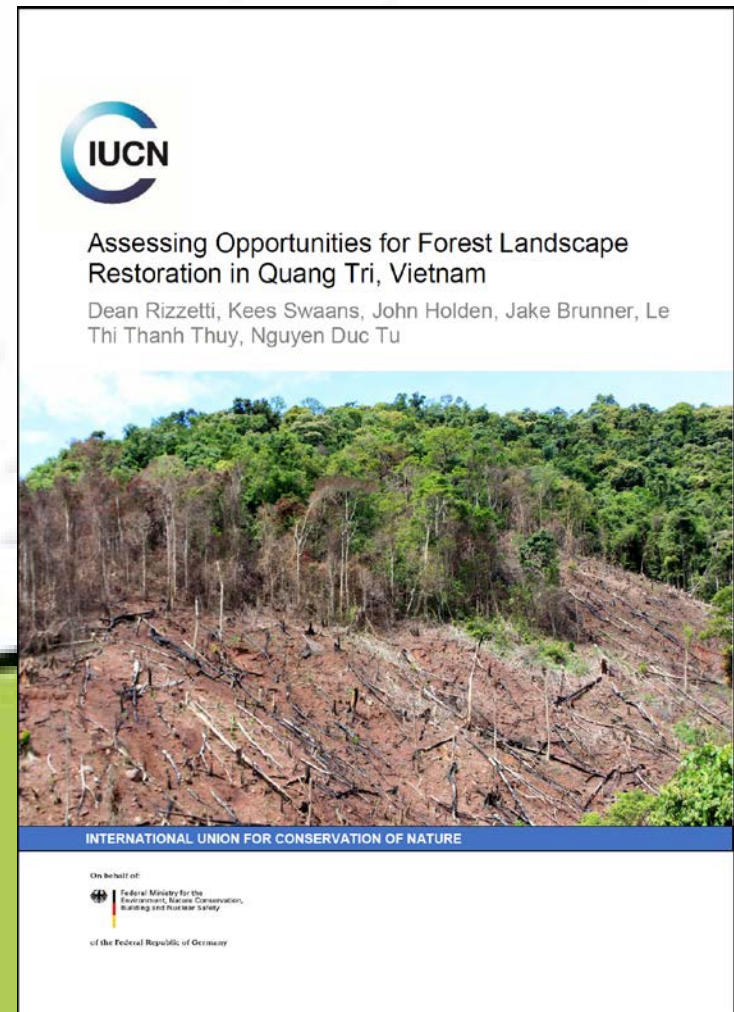
The Cambodia ROAM found most FLR options are cost effective

Net Present Value (USD/ha; 5% discount rate; 40 year horizon)



Vietnam ROAM identifies forestry industry upgrade is urgently needed

- **New vision and policy** that adopts a landscape approach And reorienting plantations to produce certified timber over longer rotations for the domestic
- **Innovative financing**
- **Improved extension**



Summary of key findings

- Diversity and scale-flexibility
- stakeholder-driven spatial analysis on degradation drivers and restoration potentials – a powerful way to engage
- The key barriers - insufficient restoration funding and the lack of well-established fundable restoration models.



Application of Restoration Opportunities Assessment Methodology (ROAM) in Asia

Summary of findings from the first Asia Regional ROAM Learning Exchange



Summary of key findings

- **Insufficient technical capacity** continues to hinder the uptake of FLR.
- In landscapes that are more advanced in FLR implementation, **local heads of the government, especially line agencies and government representation outside of the traditional forest sector**, play a crucial role.



Application of Restoration Opportunities Assessment Methodology (ROAM) in Asia

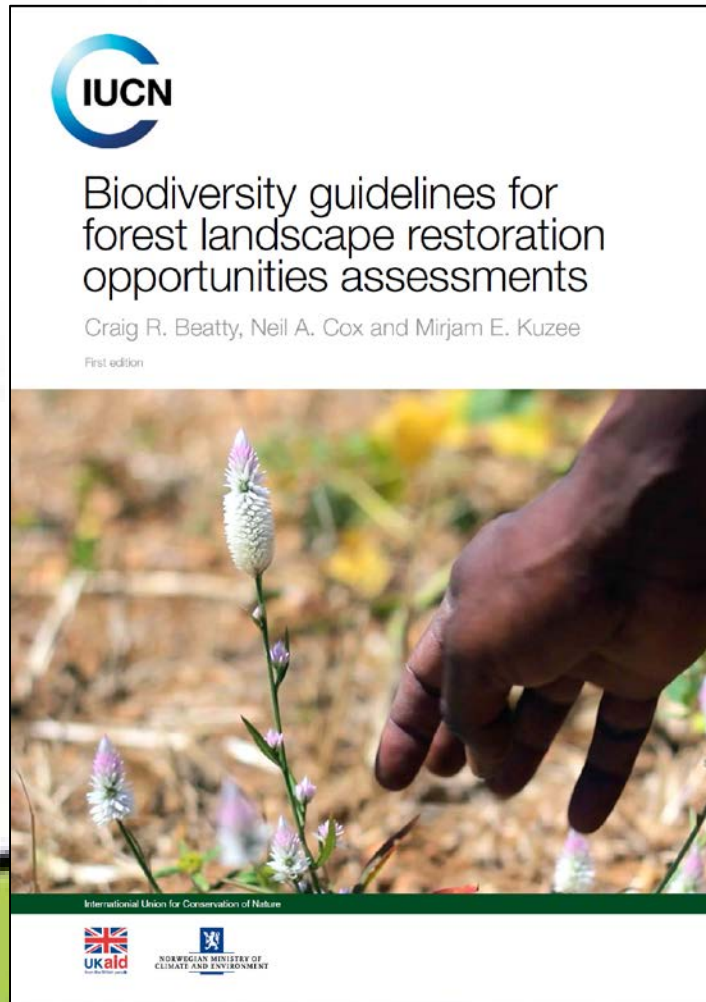
Summary of findings from the first Asia Regional ROAM Learning Exchange



ROAM in multiple languages



Additional ROAM guidelines

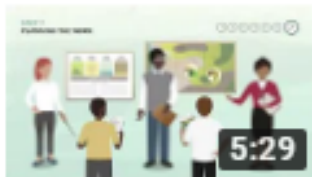


Learning materials



IUCN's Restoration Assessment Methodology (ROAM) - an overview

IUCN, International Union for Conservation of Nature



ROAM - Phase 1 - Preparation and Planning

IUCN, International Union for Conservation of Nature



ROAM – Phase 2 – Data Collection and Analysis

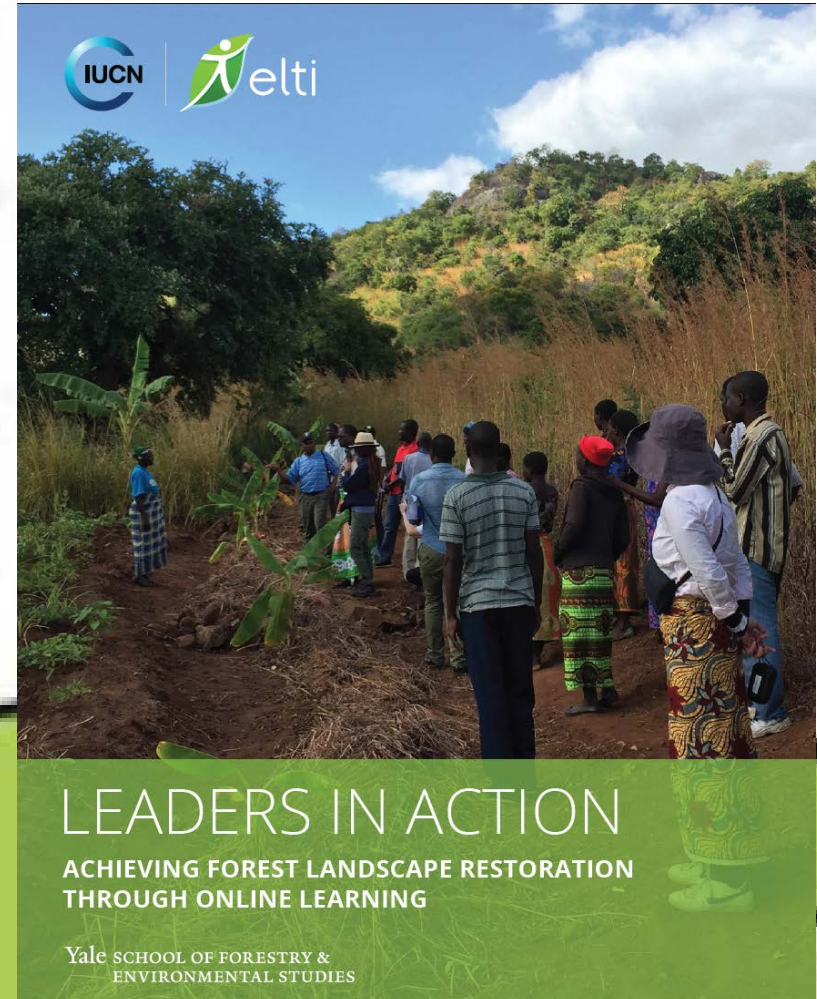
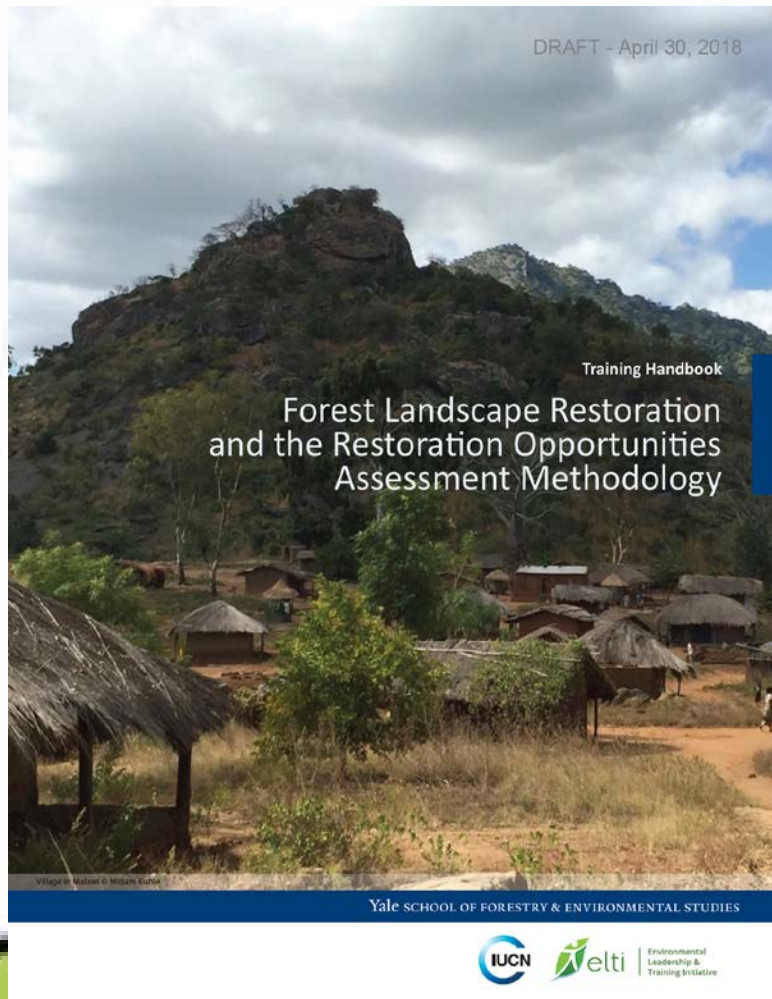
IUCN, International Union for Conservation of Nature



ROAM – Phase 3 – Results to Recommendations

IUCN, International Union for Conservation of Nature

Learning materials



Country reports



Bonn Challenge and India

Progress on restoration efforts across states and landscapes



INTERNATIONAL UNION FOR CONSERVATION OF NATURE



Assessing Opportunities for Forest Landscape Restoration in Quang Tri, Vietnam

Dean Rizzetti, Kees Swaans, John Holden, Jake Brunner, Le Thi Thanh Thuy, Nguyen Duc Tu



INTERNATIONAL UNION FOR CONSERVATION OF NATURE

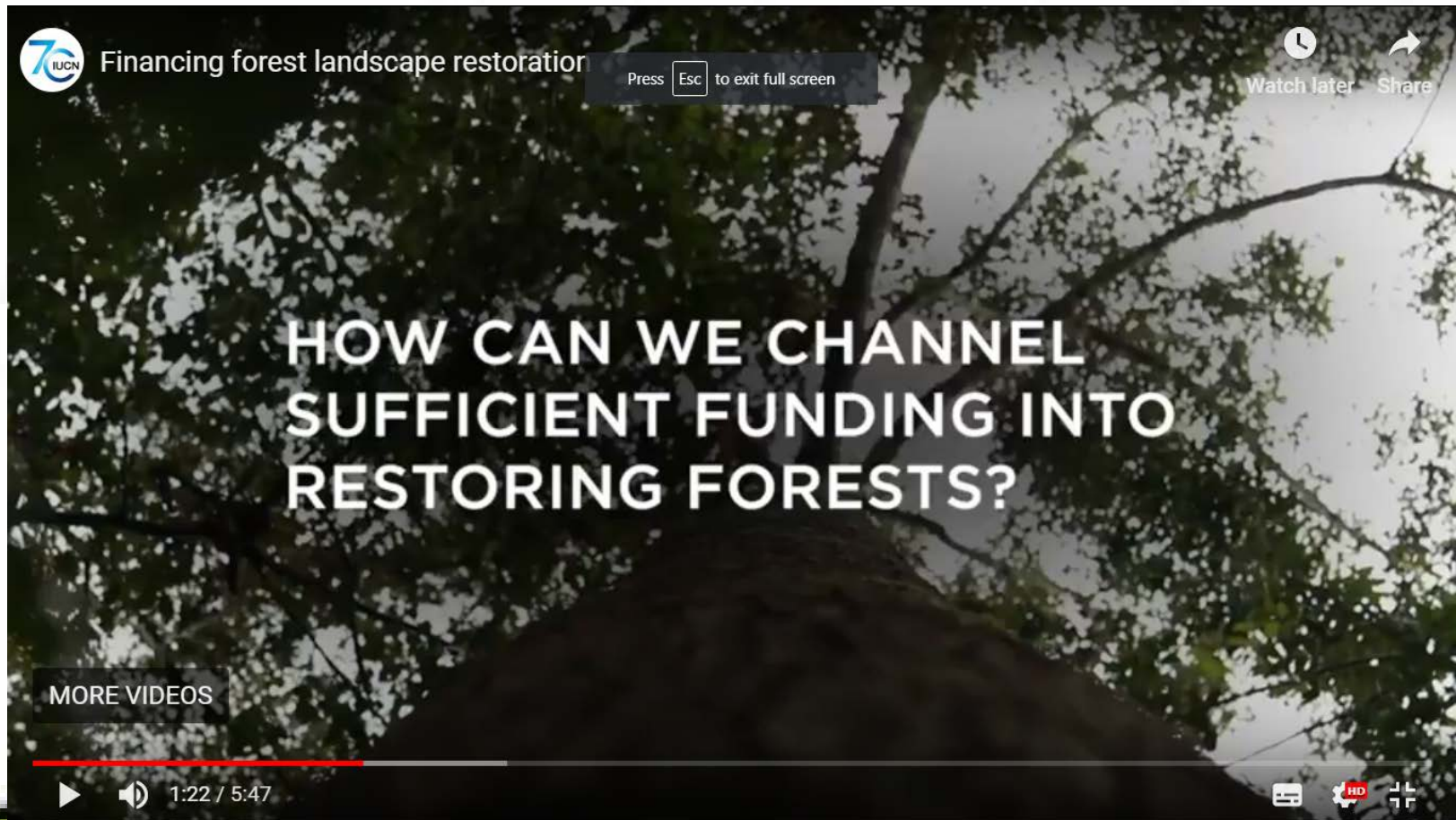
On behalf of:



Federal Ministry for the Environment, Nature Conservation, Building and Nuclear Safety

of the Federal Republic of Germany

Other Knowledge products

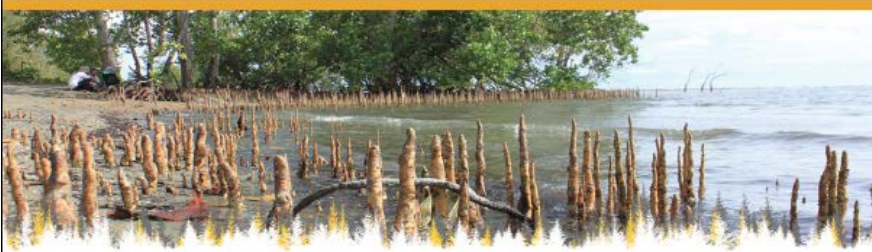


Brochures and maps



FORESTBRIEF

No. 17, April 2017



Asia

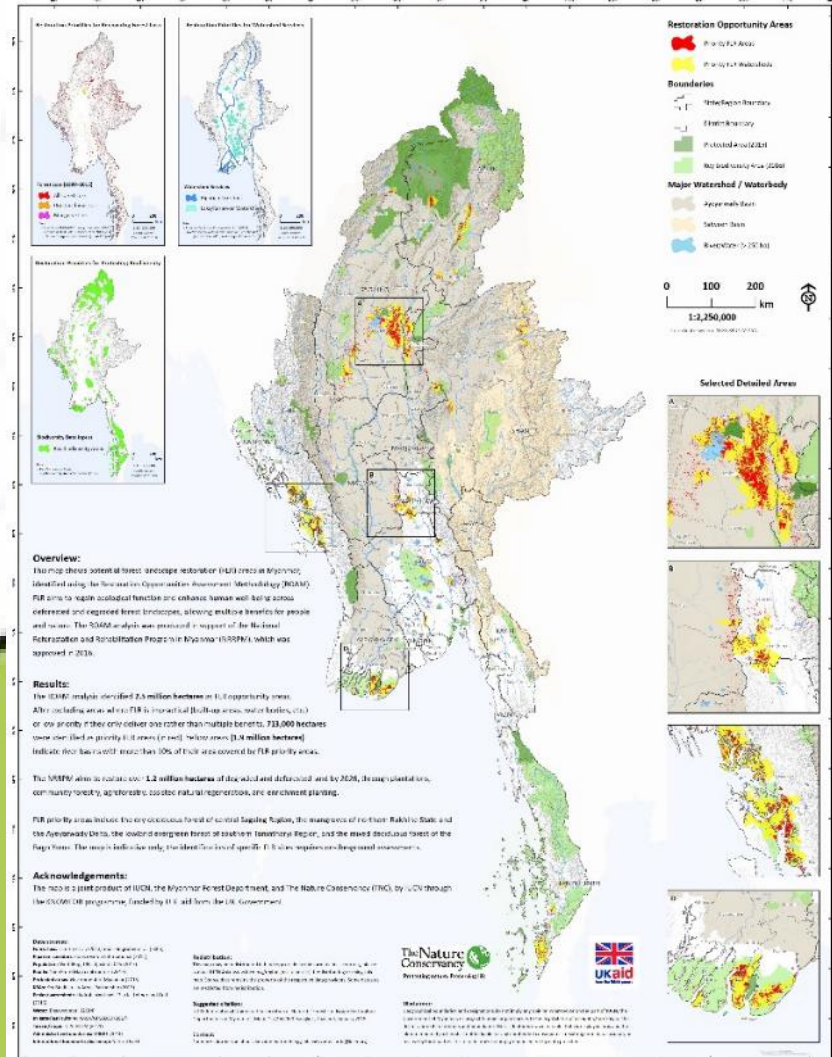


The Bonn Challenge in Asia: Driving leadership on forest landscape restoration

Asia is home to more than half of the world's population, and the pressure is on forests to provide incomes, food and water, as well as deliver solutions to climate risks and land-use needs. Countries in Asia are looking to the restoration of their degraded and deforested lands to generate these important benefits, with a focus on poverty alleviation, climate-smart agriculture and reversing deforestation.



Forest Landscape Restoration Opportunities in Myanmar



Summary

- IUCN has been instrumental on conceptualizing FLR and developing tools like ROAM.
- We continue to spearhead on applying FLR and ROAM in more landscape contexts, as well as capturing the lessons learnt.
- We look forward to working with partners on developing strategic frameworks and institutions for FLR, including technical guidance and learning networks.

Thank you!

Li Jia, FLR coordinator
IUCN Asia Regional office
Jia.li@iucn.org

