

U.S. FOREST SERVICE COLLABORATIVE FOREST LANDSCAPE RESTORATION PROGRAM (CFLRP)



John Parrotta & Lindsay Buchanan
US Forest Service, Washington Office

PRESENTATION OUTLINE:

1. Overview and Program Framework
2. Results and Outcomes
3. Lessons Learned



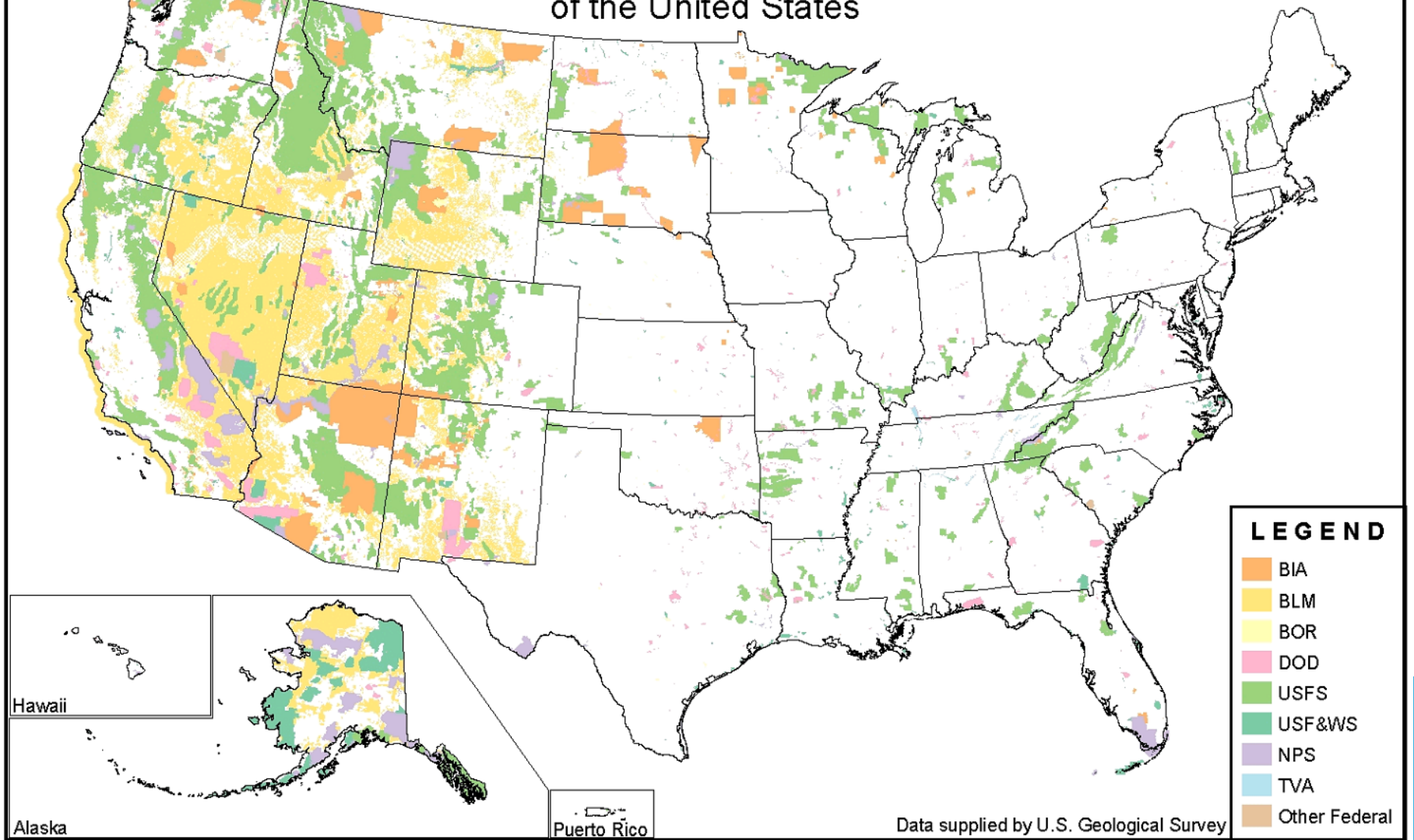
FOREST COVER IN THE U.S.

About 1/3 of the US is forested

Forest ownership: 58% private - 42% public



Federal Lands and Indian Reservations of the United States



US FOREST SERVICE – NATIONAL FOREST SYSTEM

USFS MANAGES ~8.5% OF THE TOTAL LAND (78 MILLION HECTARES)



WHY COLLABORATIVE LANDSCAPE RESTORATION?



EXAMPLES OF COLLABORATIVE LANDSCAPE RESTORATION

- Collaborative Forest Landscape Restoration Program (CFLRP)
- Joint Chiefs' Landscape Restoration Partnership
- Tribal Forest Protection Act
- Many Others



COLLABORATIVE FOREST LANDSCAPE RESTORATION ACT (2009)

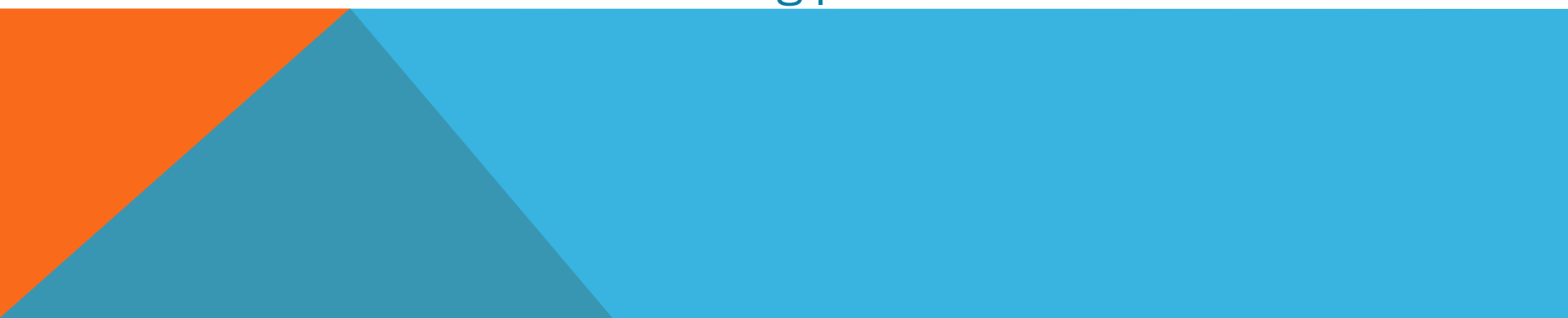
The purpose of CFLRP is to:

- Encourage collaborative, science-based restoration
- Support ecological, economic, and social sustainability
- Leverage local, national, and private resources
- Facilitate the reduction of wildfire management costs and risks, including through reestablishing natural fire regimes
- Demonstrate the degree to which various restoration approaches achieve ecological and watershed health objectives
- Use forest restoration byproducts to offset treatment costs while benefiting local rural economies and improving forest health



COLLABORATIVE FOREST LANDSCAPE RESTORATION ACT

Selection criteria includes:

- Landscapes must be **at least 20,000 hectares** and mostly **National Forest System lands**
 - Proposals developed **through a collaborative process** involving multiple stakeholders
 - Demonstrate **need for restoration** and have a **substantially complete strategy**, including reduction of hazardous fuels, maintenance of old growth, and plans to improve habitat, water quality, invasive species threat
 - Include **investment and funding plans**
- 

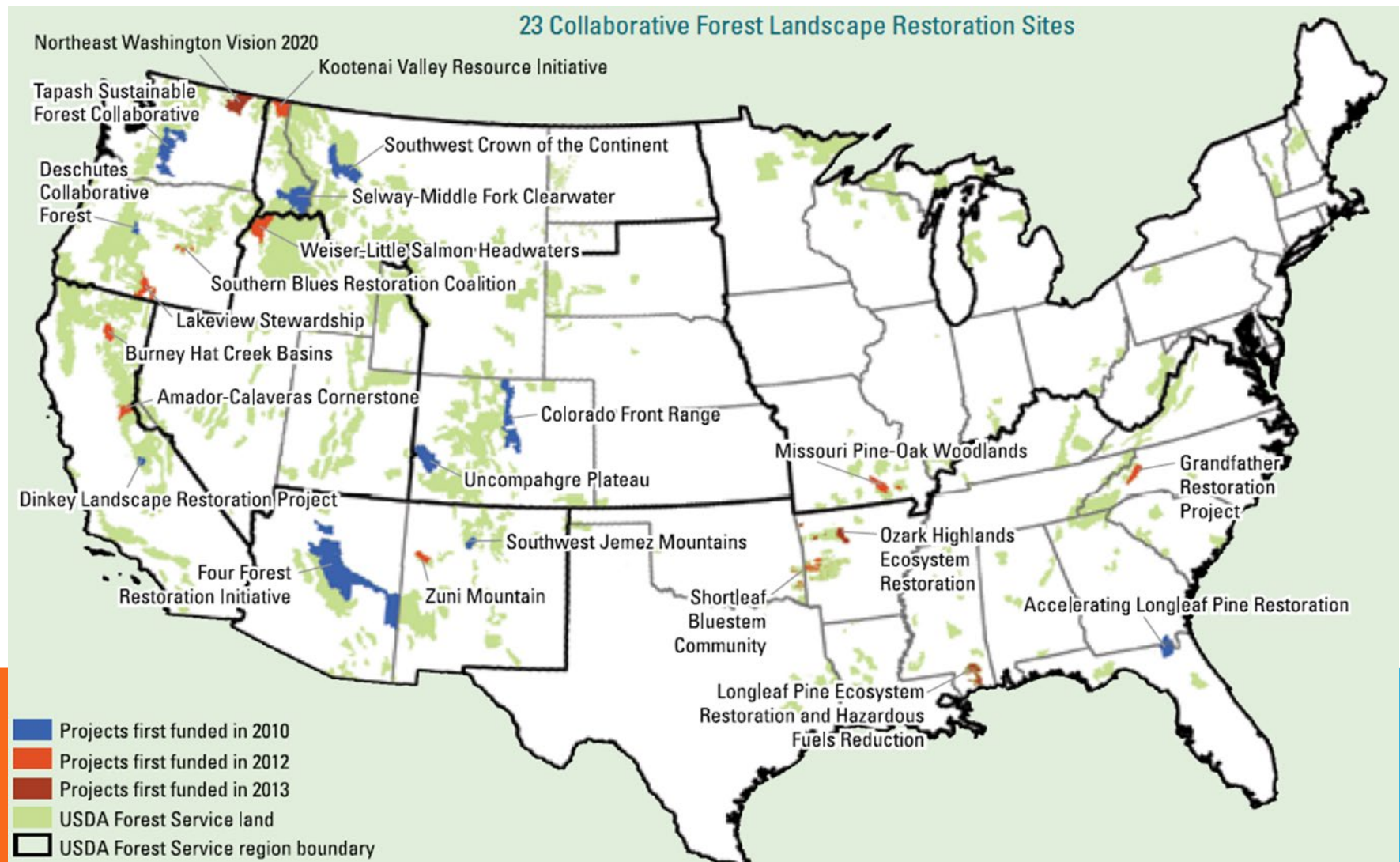
COLLABORATIVE FOREST LANDSCAPE RESTORATION ACT

Funding and Investments:

- Act authorizes funding for implementation and monitoring through 2019
- Each project can receive no more than \$4 million of this authorized funding per year
- Funds can be used to cover up to 50% of the implementation and monitoring costs
- Remainder of costs through matching funds



CFLRP PROJECTS AT A GLANCE



COLLABORATIVE FOREST LANDSCAPE RESTORATION ACT

Multi-Party Monitoring:

- Each project must use a **multi-party monitoring, evaluation, and accountability** process to assess **ecological, social and economic impacts** of implementation
- **No less than 15 years** after project implementation commences



CFLRP NATIONAL INDICATORS

- Economic impacts
- Ecological restoration
- Wildfire risk
- Leveraged funds
- Collaboration



The data to support these indicators comes from a number of sources, including:

- Annual reports
- Treatments for Restoration Economic Analysis Tool
- Ecological Indicator Reports
- Project Surveys
- Project Site Visits
- Third-party research

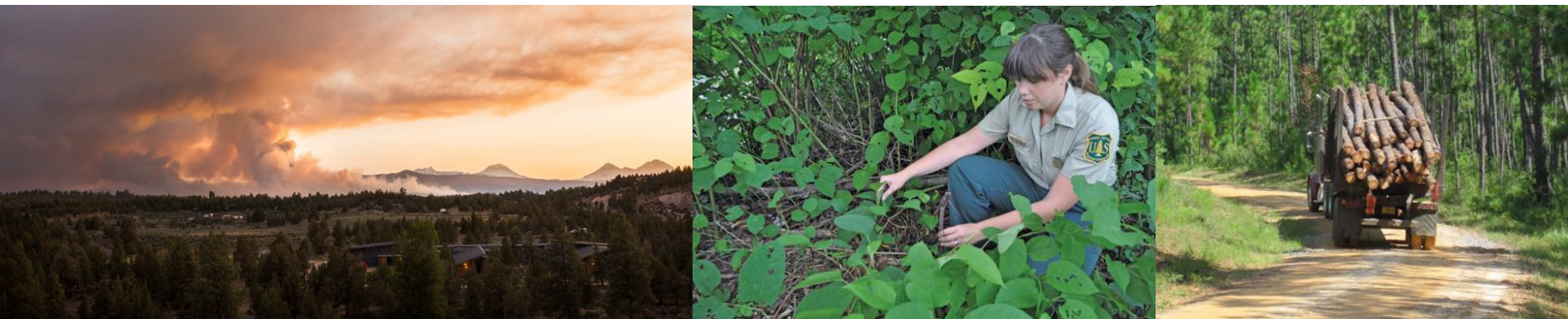
CFLRP RESULTS (2010-2017)

Integrated Outcomes on the Land

- Over 1,170,000 ha treated to **reduce the risk of catastrophic wildfire**
- Over 1,022,000 ha **improved for wildlife habitat**
- Over 55,000 ha **treated for noxious weeds and invasive plants**
- Over 58,000 ha of **forest vegetation established**
- Over 2,000 km of **streams improved**
- Over 2,600 km of **roads decommissioned**

Benefits in the Community

- Over an estimated **\$1.5 billion in local labor income** from a range of project activities from implementation to monitoring and an **average of 5,400 jobs** created or maintained annually



CFLRP RESULTS

Strengthened Partnerships

- Over **\$125 million generated in partner match** funds to support project activities on National Forest System lands and additional leveraged investments to support project objectives and for work on private, state and other federal lands.
- Collaboration creates **long-term support** for project goals and **increases capacity** to get the work done.
- Indication that **more restoration** is happening on the ground as a result of collaboration – and capacity spread **beyond CFLRP**



CFLRP

LESSONS LEARNED

- Multi-year funding and partner matching
- Collaboration in project development & implementation
- Working at the landscape scale promotes integration
- Multi-party monitoring & adaptive management



THANK YOU!

CFLRP Website:

<http://www.fs.fed.us/restoration/CFLRP/index.shtml>

<https://www.fs.fed.us/restoration/CFLRP/resource-library.php>