



Progress Report on the Implementation of the ITTO Thematic Programmes

Item 11 of the Provisional Agenda
Document ITTC(LIV)/7



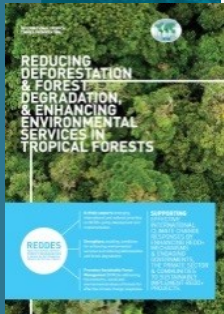
54th Session of the International Tropical Timber Council (ITTC)
5-9 November 2018, Yokohama, Japan





Approved ITTO Thematic Programmes

- Forest Law Enforcement, Governance and Trade (TFLET)
- Reducing Deforestation and Forest Degradation and Enhancing Environmental Services in Tropical Forests (REDDES)
- Trade and Market Transparency (TMT)
- Community Forest Management and Enterprises (CFME)
- Industry Development and Efficiency (IDE)





Projects and Status

79 projects under Thematic Programmes

- TFLET 29
- REDDES 31
- CFME 5
- TMT 14

Implementation Status:

- 67 projects completed (*two in 2018*)
- 5 projects ongoing
- 3 projects terminated (*in accordance with the provisions of Decision 6(LII)*)
- 4 lapsed into 'sunset'

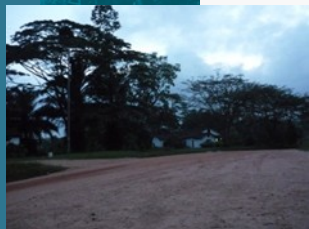


TP Funding



Pledges Pilot Phase						
Donor	Total	TFLET	REDDES	CFME	TMT	IDE
Total*	18,839,932	6,887,209	9,232,742	1,100,000	1,619,981	NIL
<i>*Norway, Netherlands, Japan, Switzerland, USA, UK, EU/CITES, Australia, Finland, Germany, JLIA, New Zealand, Sweden, Korea</i>						
Pledges SAP 2013-2018						
Australia	1,942,098	1,942,098				
EU/CITES	490,632				490,632	
Switzerland	300,000		300,000			
Japan	200,000	200,000				
USA	150,000	50,000			100,000	
Total	3,082,730	2,192,098	300,000		590,632	NIL
Overall Total	21,922,662	9,079,307	9,532,742	1,100,000	2,210,613	NIL

- No new pledges to the TPs since 2014
- Last call for proposals under TMT in Nov 2014





Projects

	Project ID	TFLET	ITTO Funding	Status
Australia	TFL-PD 037/13 Rev. 2 (M)	Implementing a DNA timber tracking system in Indonesia	\$518,833	<i>Ongoing*</i>
Indonesia	TFL-PD 032/13 Rev. 2 (M)	Strengthening the Capacity of Local Institutions to Sustainably Manage community Forestry in Sanggau for Improving Livelihood	\$456,680	Completed 2018
Panama	TFL-PD 044/13 Rev.2 (M)	Strengthening of ANAM's management capacity to reduce illegal logging and trade in the eastern region of Panama (Bayano and Darien) through monitoring and control mechanisms	\$412,556	<i>Ongoing*</i>

	Project ID	REDDES	ITTO Funding	Status
Brazil	RED-PD 029/09 Rev.1 (F)	Monitoring deforestation, logging and land use change in the Pan Amazonian Forest - PANAMAZON II	\$1,124,784	<i>Ongoing*</i>
Ghana	RED-PD 093/12 Rev.3 (F)	Advancing REDD+ in Ghana: preparation of REDD+ pilot schemes in off-reserve forests and agro-forests	\$297,205	Ongoing
Guatemala	RED-SPD 079/12 Rev.1 (F)	Strengthening of governance and sustainable management of mangrove ecosystems in Guatemala as a climate change adaptation measure	\$146,751	<i>Ongoing*</i>
Liberia	RED-SPD 084/12 Rev.1 (F)	Improving efficacy of forestry policies and activities in Liberia through REDD+ demonstration projects	\$149,922	Completed 2018

- *Completion pending final reporting*





ITTO

Strengthening the capacity of local institutions to sustainably manage community forests in Sanggau for improving livelihoods

TFL-PD 032/13 Rev.2 (M)

Improve the capacity of community and small and medium sized enterprises to implement and demonstrate that timber produced and traded comes from legal sources contributing to sustainable livelihoods

- Contributed to the expansion of forest area under community forest management by additional 3850 ha by the Ministry of Environment and Forestry to 5 local communities
- Improvement of local infrastructure (irrigation system, improved roads)
- Enhanced cooperation among government agencies (local-regional-national)

Improving efficacy of forestry policies and activities in Liberia through REDD+ demonstration projects

RED-SPD 084/12 Rev.1 (F)

Reduce forest degradation; Maintain and enhance climate change mitigation and other environmental services of tropical forests; Contribute to the social and economic sustainability and wellbeing of forest-dependent communities by increasing forest values through forest rehabilitation, as well as payments for forest-based environmental services

- Training of forest-dependent communities in Liberia on sustainable forest management
- Empowerment of community based organizations and local civil society groups on forest rights and the principles of REDD+



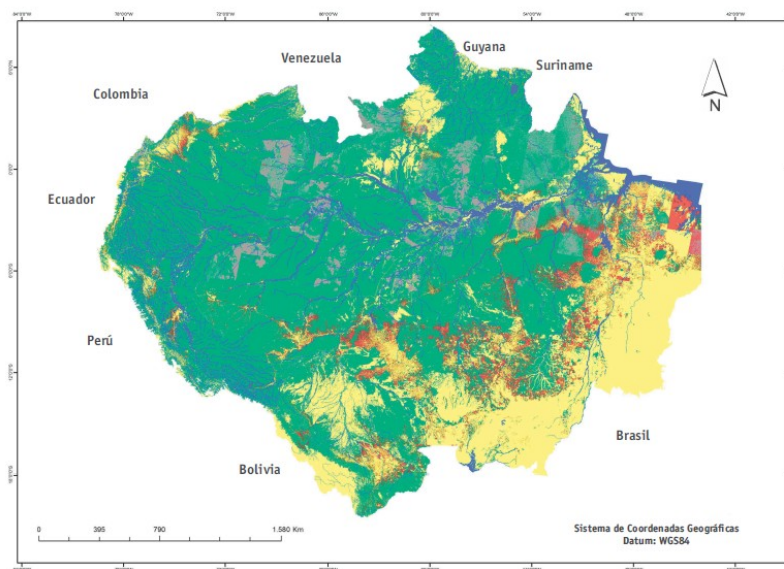


‘Monitoring deforestation, logging and land use change in the Pan Amazonian Forest – PANAMAZON II’ - RED-PD 029/09 Rev.1 (F)

(Amazon Cooperation Treaty Organization – ACTO)

- Facilitation of participatory processes for the development of National Forest Cover Monitoring Systems
- Implementation of national forest cover monitoring systems
- Strengthening of existing platforms for regional dialogue and coordination of forest management

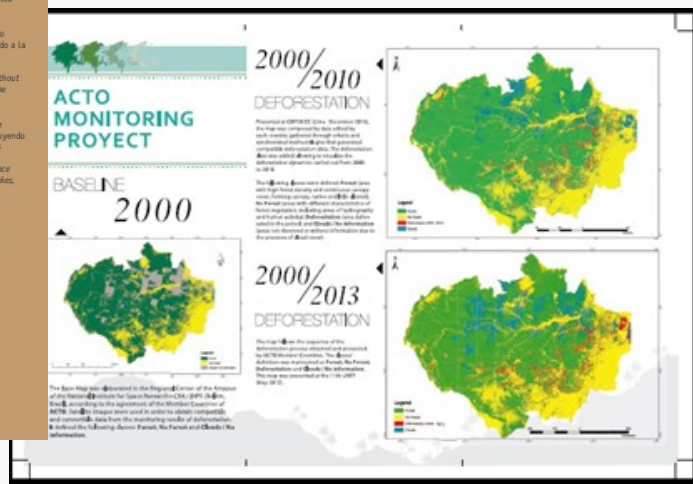
MAPA DE DEFORESTACIÓN DE LA AMAZONIA REGIONAL - 2014
 AMAZON REGION DEFORESTATION MAP



LEYENDA
LEGEND

- Bosque: área con alta densidad forestal y cubierta de copa continua, formando dosel, nativa poco alterada
Forest: high density forest area and continuous crown cover, forming canopy, native and little change
- No Bosque: áreas con distintas características de la fisonomía vegetal forestal y actividad humana
No Forest: areas with different features from the forests physiognomy and human activity
- Deforestación 2000-2014: Área deforestada entre el periodo de 2000 y 2014.
Deforestation 2000-2014: deforested area between 2000 and 2014
- Nubes / Sin Información: zonas no observadas o sin información debido a la presencia de cobertura de nubes
Clouds / No Information: areas without information or unobserved due to the presence of cloud cover
- Hidrografía: Cualquier presencia de aguas superficiales en el área, incluyendo mares, lagos, ríos, lagunas y bahías.
Hydrography: Any presence of surface water in the area, including seas, lakes, rivers, lagoons and bays

MAPA DE UBICACIÓN
 América del Sur
 Localization Map - South America





‘Implementing a DNA timber tracking system in Indonesia’

TFL-PD 037/13 Rev.2 (M)

- Development of a species and timber tracking system using DNA methods for the Indonesian tree species of the red meranti and light red meranti group
- Capacity building, training and technology transfer between project partners (University of Adelaide, Australia & Centre for Forest Biotechnology and Tree Improvement, CFBTI, Yogyakarta, Indonesia)
- Project team members presented at training events, e.g., on illegal logging, land encroachment and related financial crimes

