

The Greater Gola Landscape

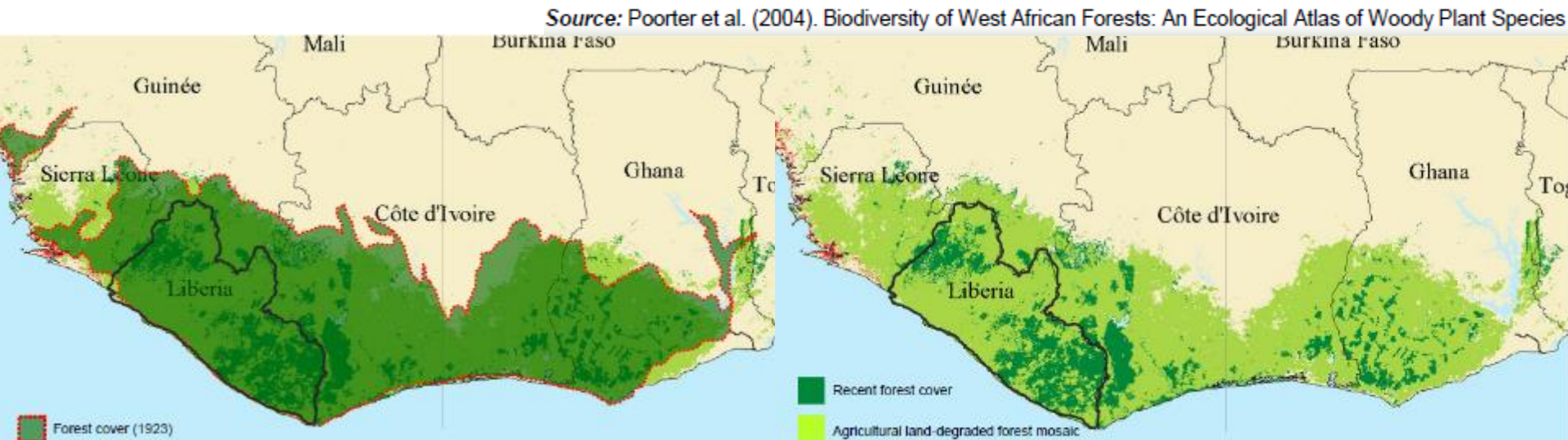
Transboundary conservation in Sierra Leone + Liberia



Partnership for
nature and people

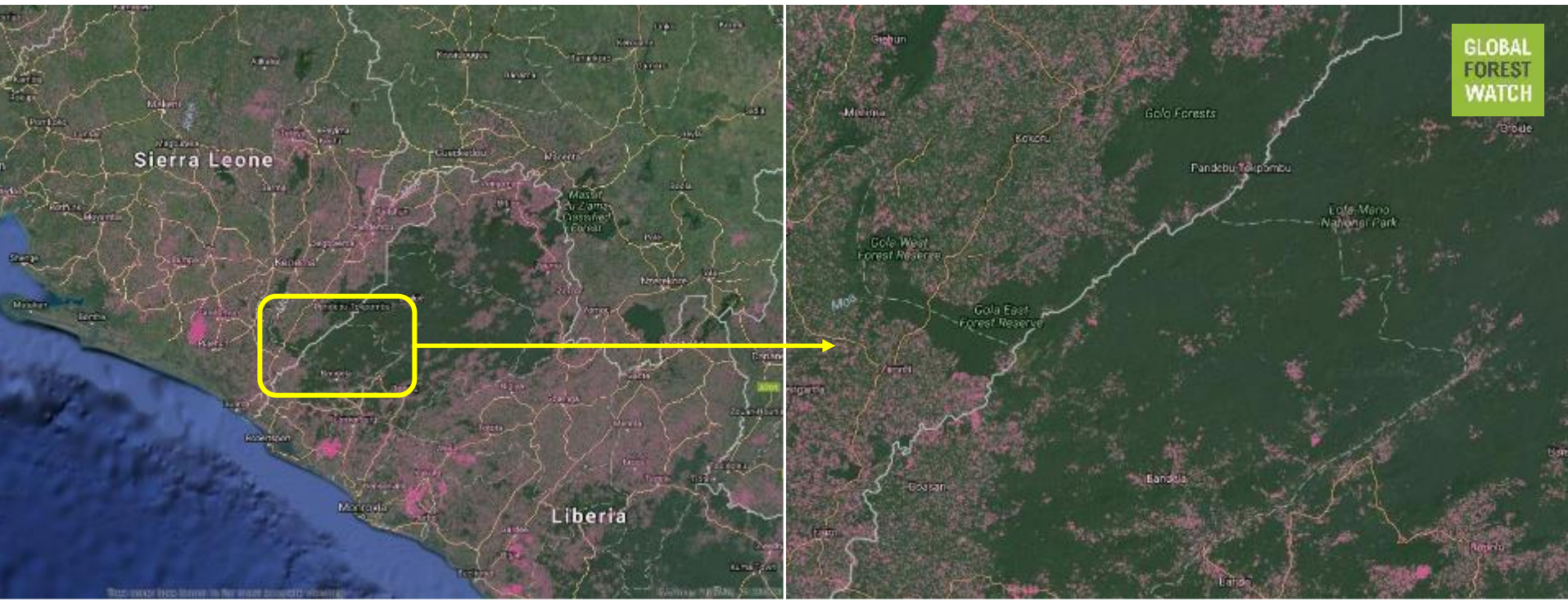
Upper Guinean Forest Hotspot

- Historically ~120 million hectares → now reduced to patches of forest, separated by agriculture
- High biodiversity value, especially for primates
- Major threats: clearing for agriculture, extractive/mining operations, and bushmeat hunting



The Gola Forest

- One of the last, large blocks of forest
- Includes largest intact forest in Sierra Leone
- Map: tree cover loss 2000-2014 in pink
- Forest edge is increasingly clear



Gola's Remarkable Biodiversity

Birds



327 bird species;
threatened birds include
White Necked Picathartes,
Rufous Fishing-Owl, Gola
Malimbe.

Fish



31 species identified to
date; more than 35% are
only found within the
region.

Mammals



9 species of threatened
mammals, including
Pygmy Hippopotamus,
Western Chimpanzee,
Jentink's Duiker, African
Forest Elephant.



Gola's Remarkable Biodiversity

Butterflies



Over 600 species; over 80% of all butterfly species known for Sierra Leone.

Plants



~2800 species of vascular plants; 650 are endemic.

Amphibians

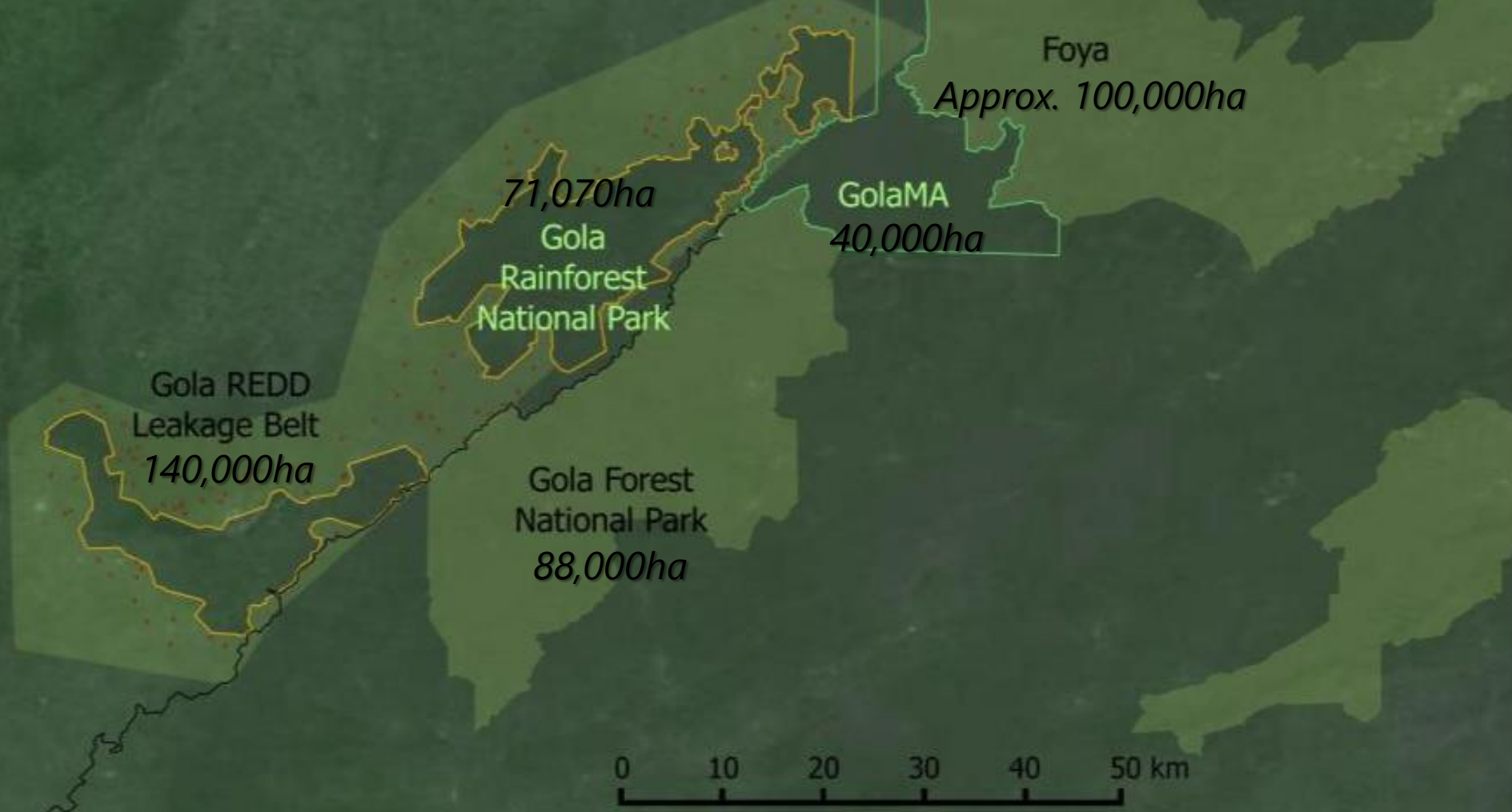


43 species, including critically endangered Tai toad; most restricted to Upper Guinea Forest.



The Greater Gola Landscape

Vision: A transboundary mosaic covering 300,000 hectares of protected and community managed forests



Our Approach

- Concurrent work in Sierra Leone and Liberia
- National BirdLife Partner leads
- BirdLife and its Partners provide technical and financial support
- Locally-tailored approaches with common themes
 - ✓ Forest protection
 - ✓ Community engagement
 - ✓ Education and development
 - ✓ Science and monitoring



A Transboundary Partnership

Sierra Leone



Foya

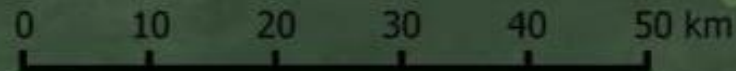
GolaMA

Gola
Rainforest
National Park

Gola REDD
Leakage Belt

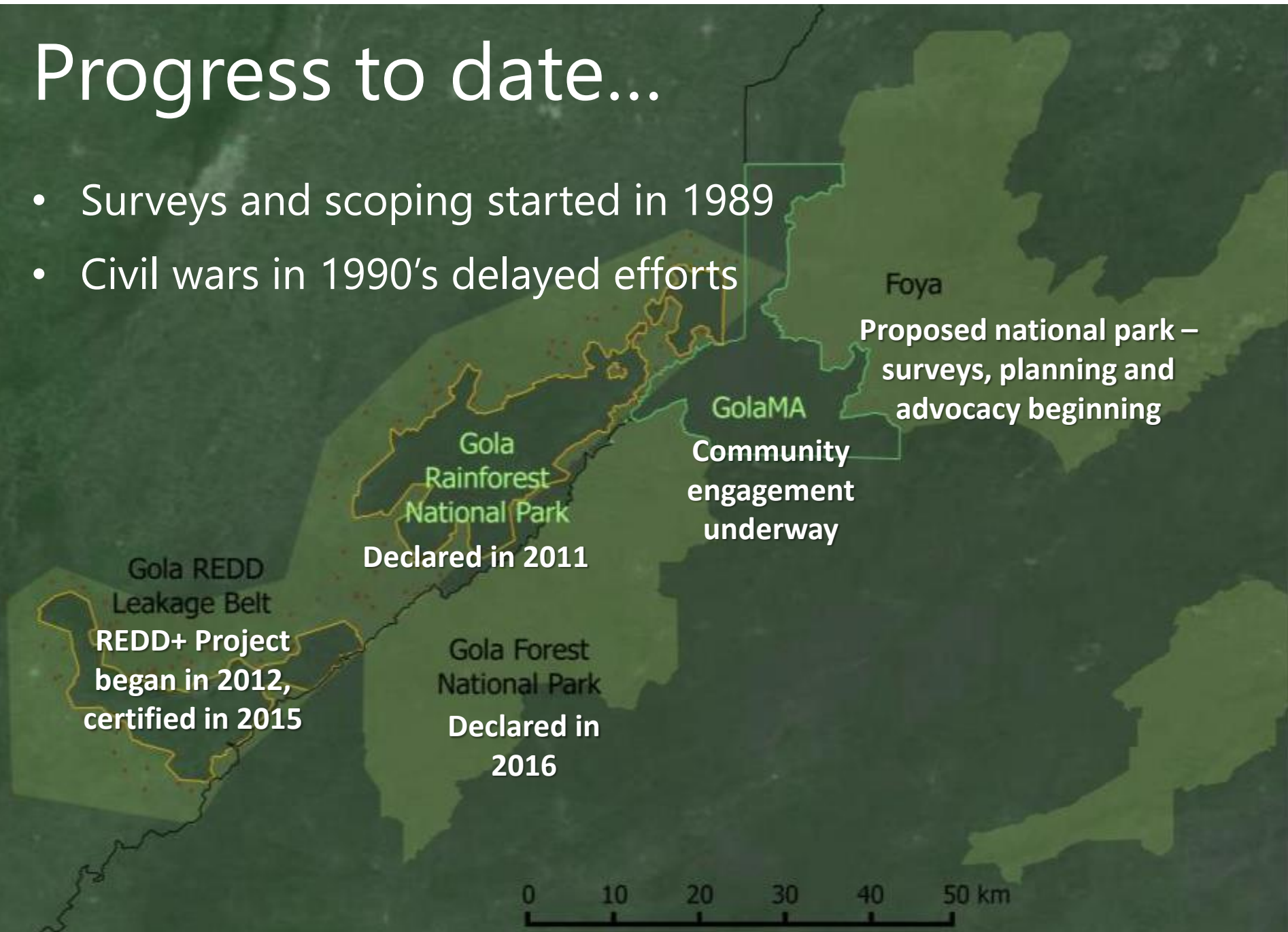
Gola Forest
National Park

Liberia



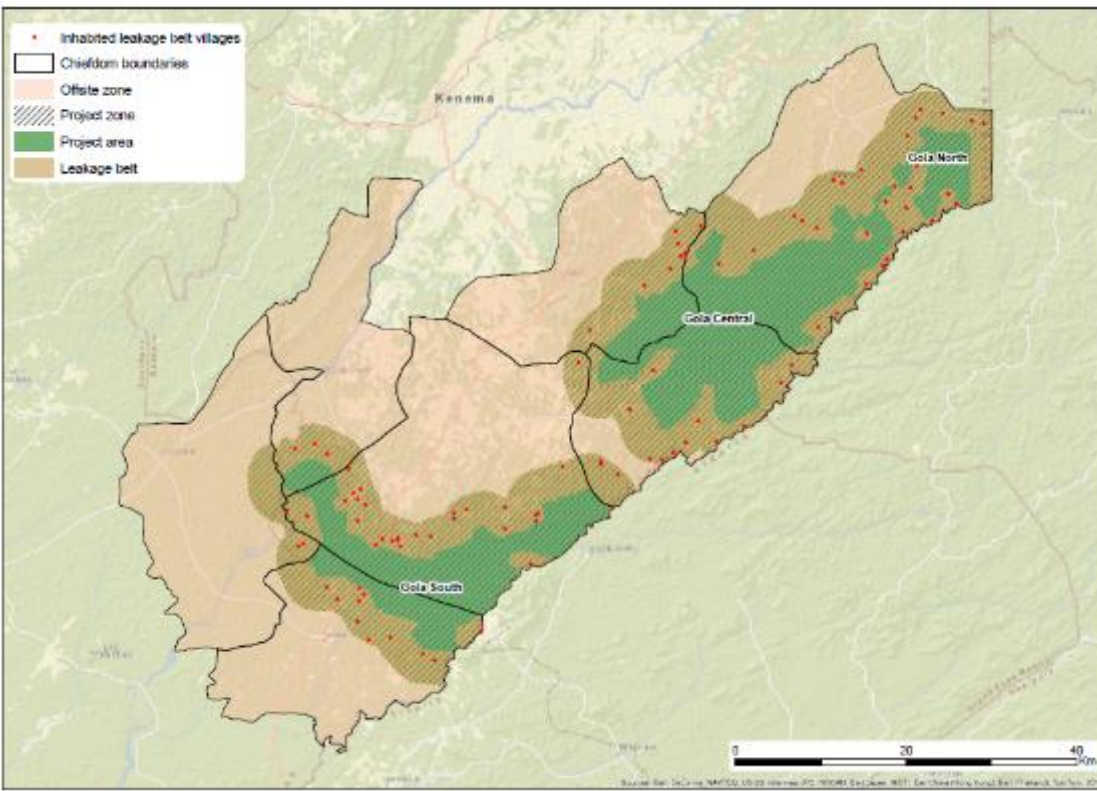
Progress to date...

- Surveys and scoping started in 1989
- Civil wars in 1990's delayed efforts



Gola REDD+

- 1st public-private conservation partnership in Sierra Leone
- 1st REDD project for West Africa
- Protected area (green) + community managed “leakage belt” (brown)



- 2015: VCS + CCB validated
- CCB double gold: biodiversity benefits + cc adaptation
- Expected to avoid over 5 million tonnes CO₂e emission in first 10yrs

Sustainable Development

- 114 communities (~24,000 people) benefit in SL
- Livelihood projects and maintenance of forest ecosystem services

Subsistence agricultural improvement



Cocoa plantation rehabilitation and improvement

Saving and lending scheme



Land use planning and co-management

Education scholarship support



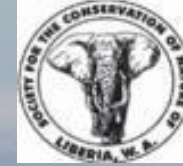
Science and Monitoring

To document, understand and monitor wildlife

To understand links to human activity (hunting, crop raiding)

To inform the management decisions of the project





Looking to the future...

We are advancing an ambitious Greater Gola Landscape vision.

We believe in a multi-partner, multifaceted approach.

We are replicating success, learning from failures.

With 25 years already invested, we are committed to Gola, for people and for the planet. We are in it for the long haul!