



COP21 - Paris

**REDD+ within Intended Nationally Determine
Contributions (INDCs)**

***Governance lessons learnt from community forest
management in Cambodia***

December 01, 2015

Side Event Observer Room 04, official
Conference venue (Paris-Le Bourget site)

By: Chheng Kimsun
Director General of the Forestry
Administration, Cambodia



Overview on Cambodia's INDC

Cambodia identified two main sources of emissions:

- (1) Energy industries, manufacturing industries, transport, and other sectors*
- (2) LULUCF*

Cambodia will undertake voluntary and conditional action to reduce emission from LULUCF

Mitigation action plan (up to 2030) under LULUCF:

- Cambodia will implement *National REDD+ strategy (2016-2025)* to reduce emission from LULUCF



[From policy formulation to action]

Community Forestry (CF) evolution in Cambodia !

The RGC made progress on CF establishment:

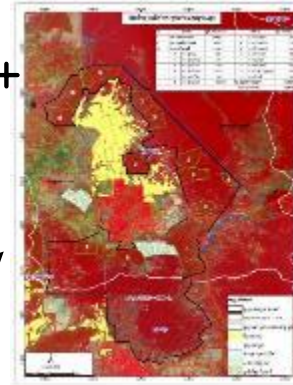
- CF is one of the approaches to sustainable forest management
- Forestry Law (2002), with its supplements legal instruments such as CF sub-degree and guideline had been adopted to support CF
- CF is highlighted in Government Rectangular Strategy phase-III
- National Forestry Program (2009-2029) targeted 2 millions hectares of forest land for establishing CF



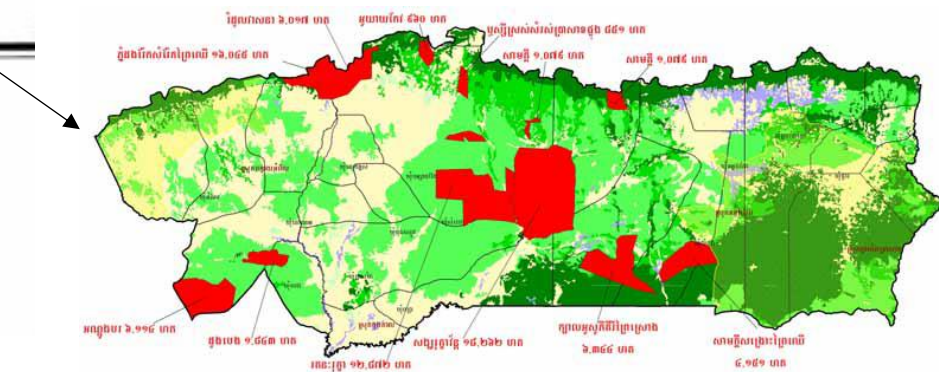
Lesson learnt/impacts from REDD+ demonstration projects and community forestry development in Cambodia

REDD+ Demonstration Projects in Cambodia

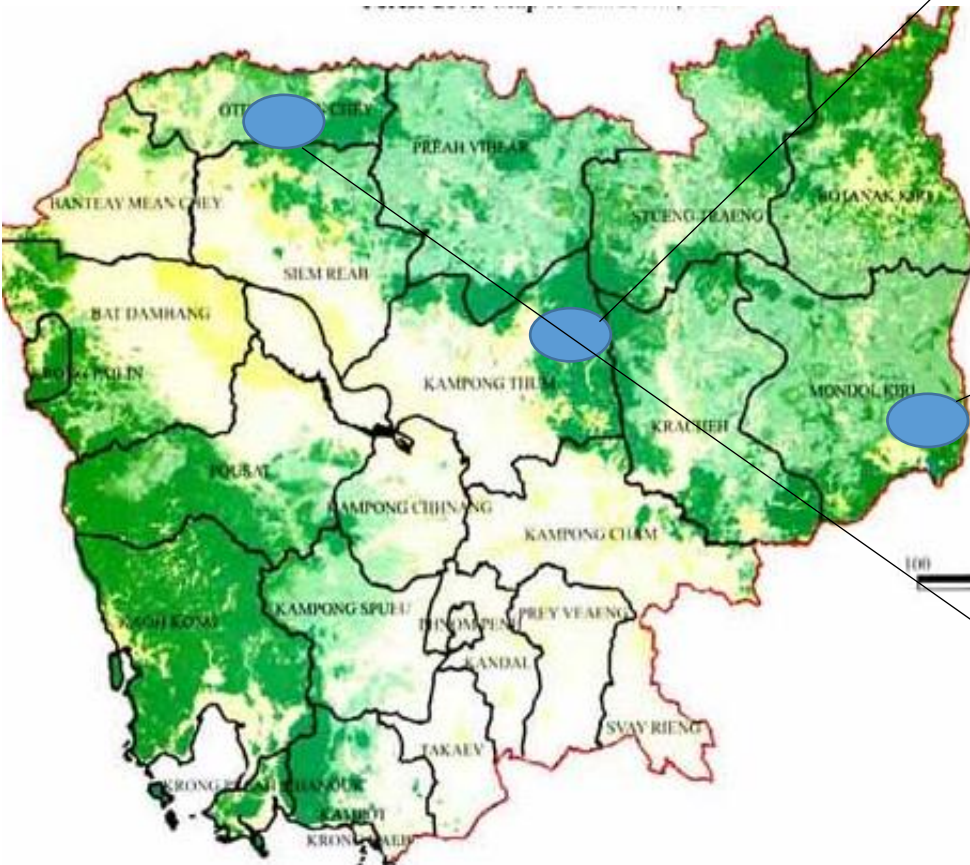
ITTO- supported REDD+ Project



Seima Protection Forest REDD+ Project



Oddar Meanchey community forestry REDD+ Project





Lesson learnt/impacts from REDD+ demonstration projects and community forestry development in Cambodia

- With strongly support from government and partners enable CF be able to reduce deforestation and forest degradation, enhance carbon stocks, SFM, and promote forest conservation
- Safeguards to social and environmental
- Promote stakeholders participation and transparency manner in forest resources management
- Promote gender inclusive
- The effective participatory forest monitoring already operated inside community forestry management system.



Recommendation toward policy formulation for REDD+ and INDC Plan implementation:

- Local community is one of the potential stakeholders that scientific forester should partners with toward REDD+ implementation successfully.
- Community Forestry is one of the feasible platforms for future REDD+ implementation
- Strengthening and scale up the level of support to CF is realized that will deliver positive GHG emission reduction from LULUCF while enhance multiple benefits to social and environmental.



Thanks you !