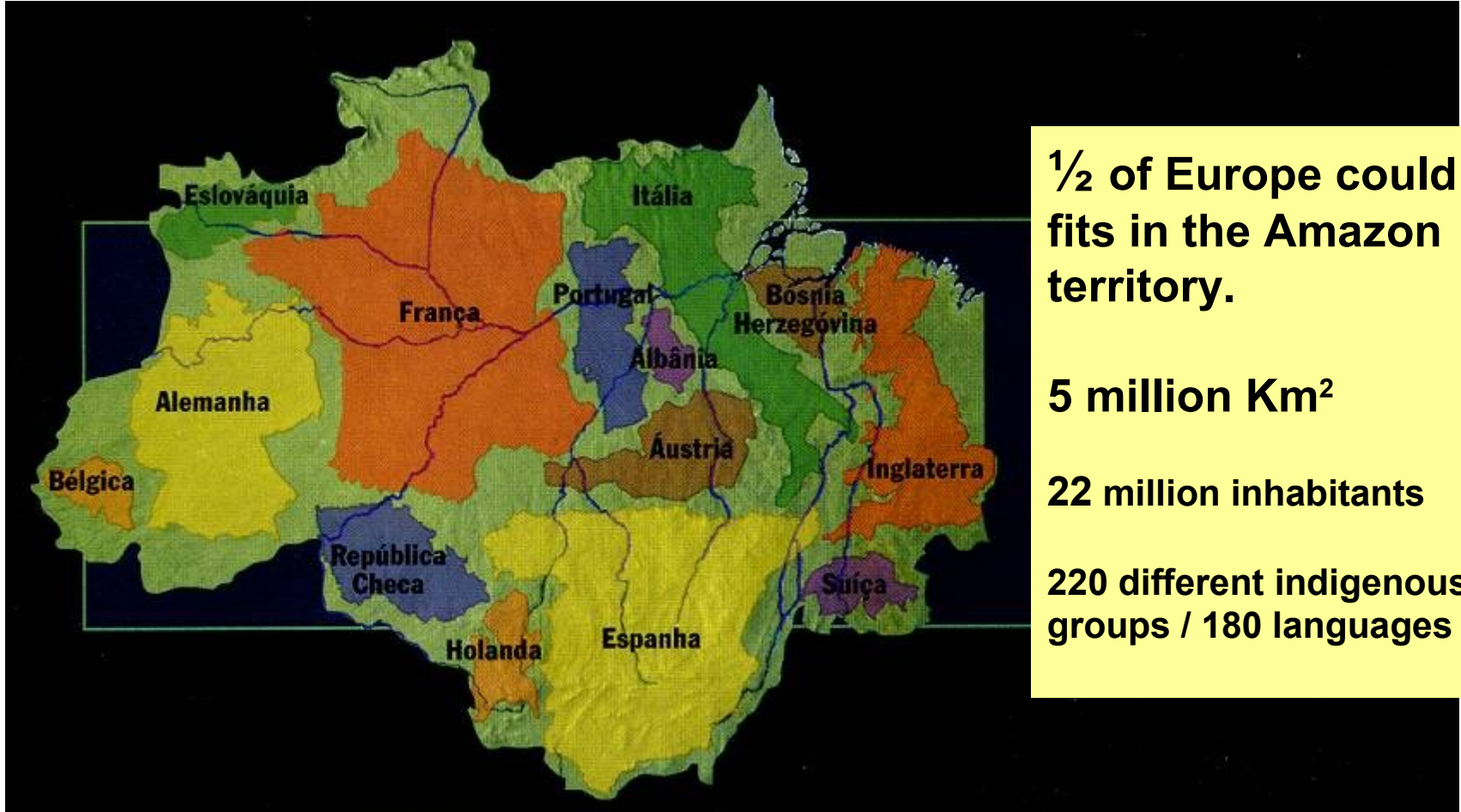
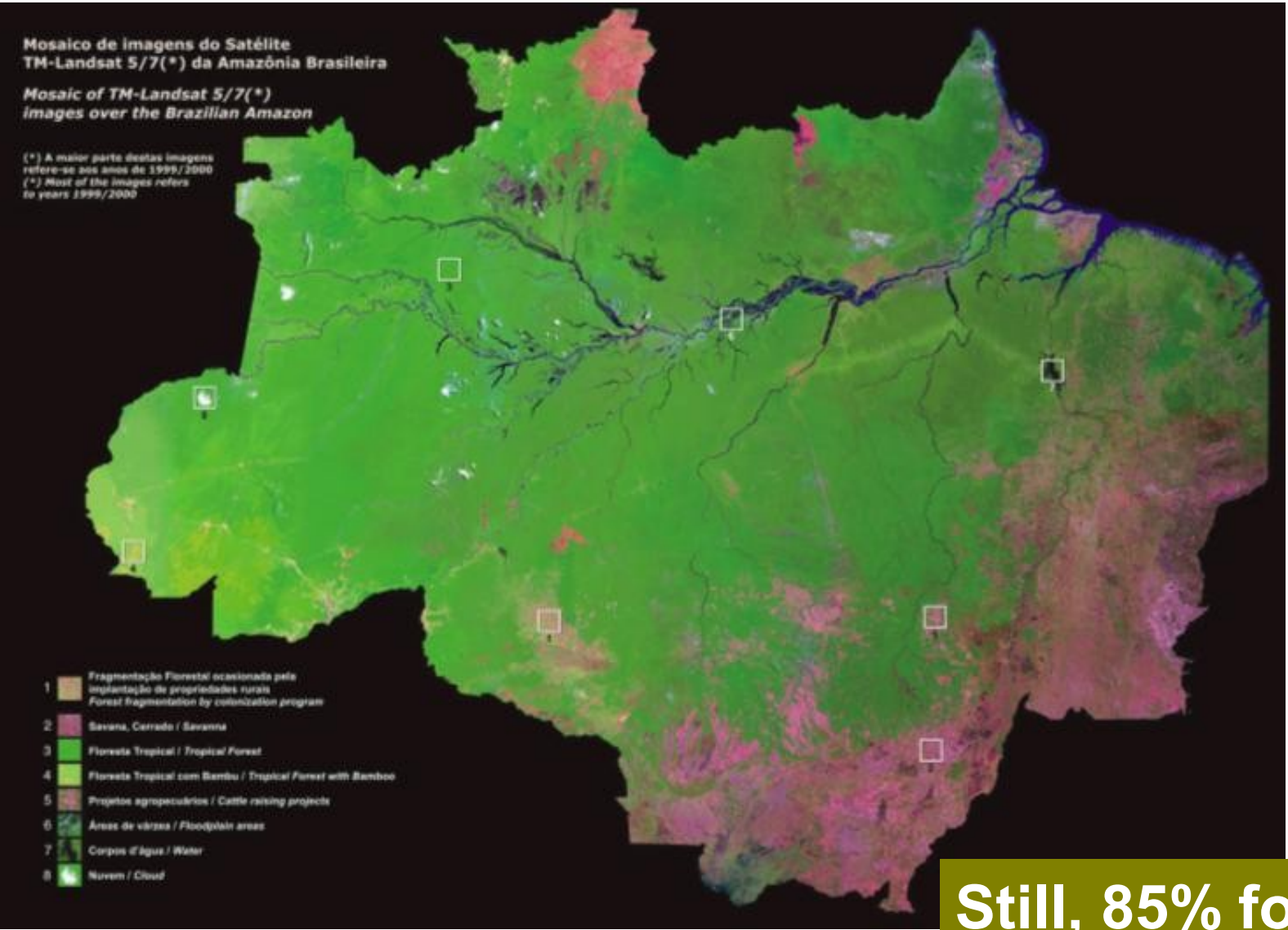




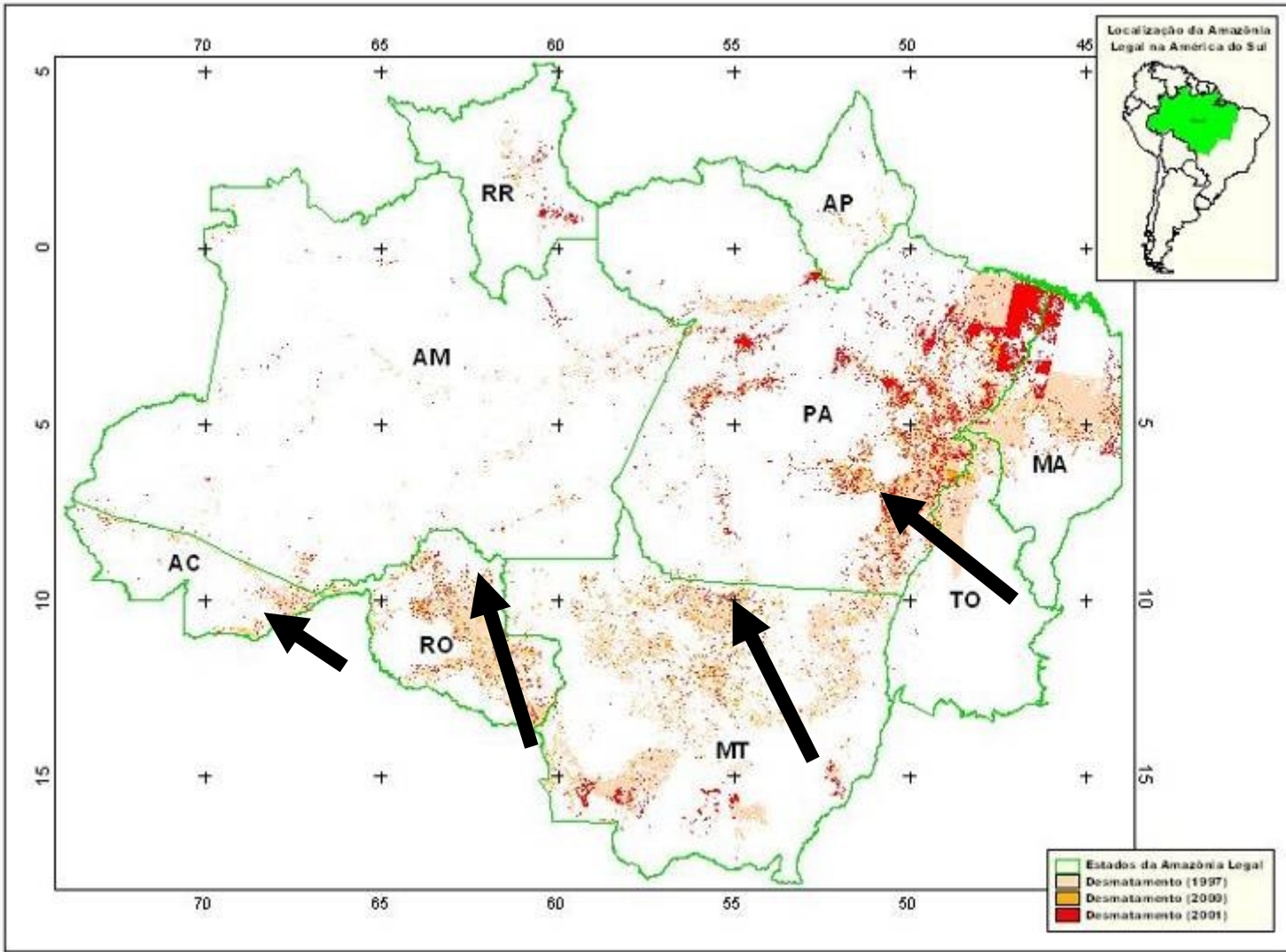
## **Combating Deforestation and Promoting SFM in Brazil**

# The Amazon Region

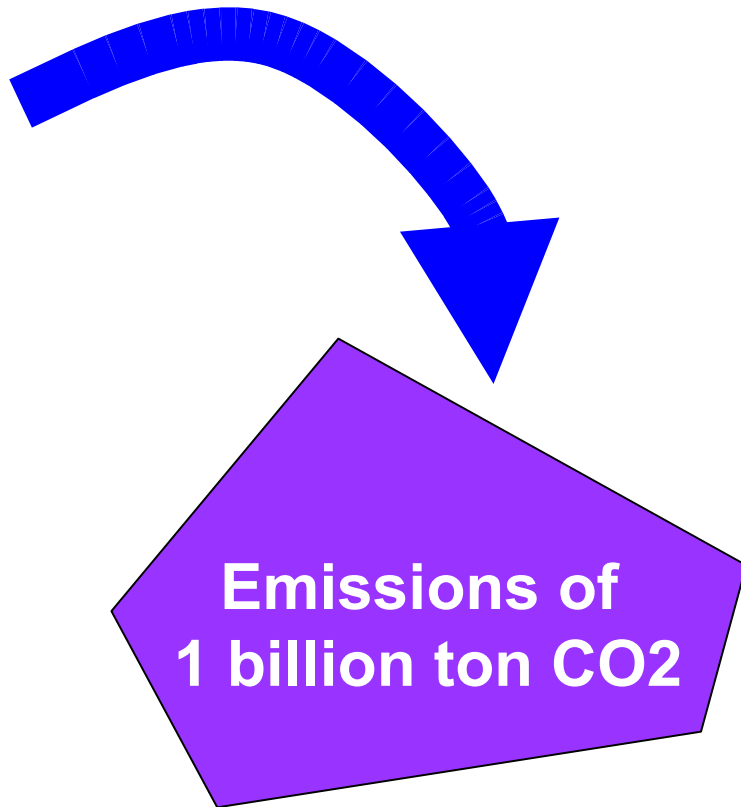
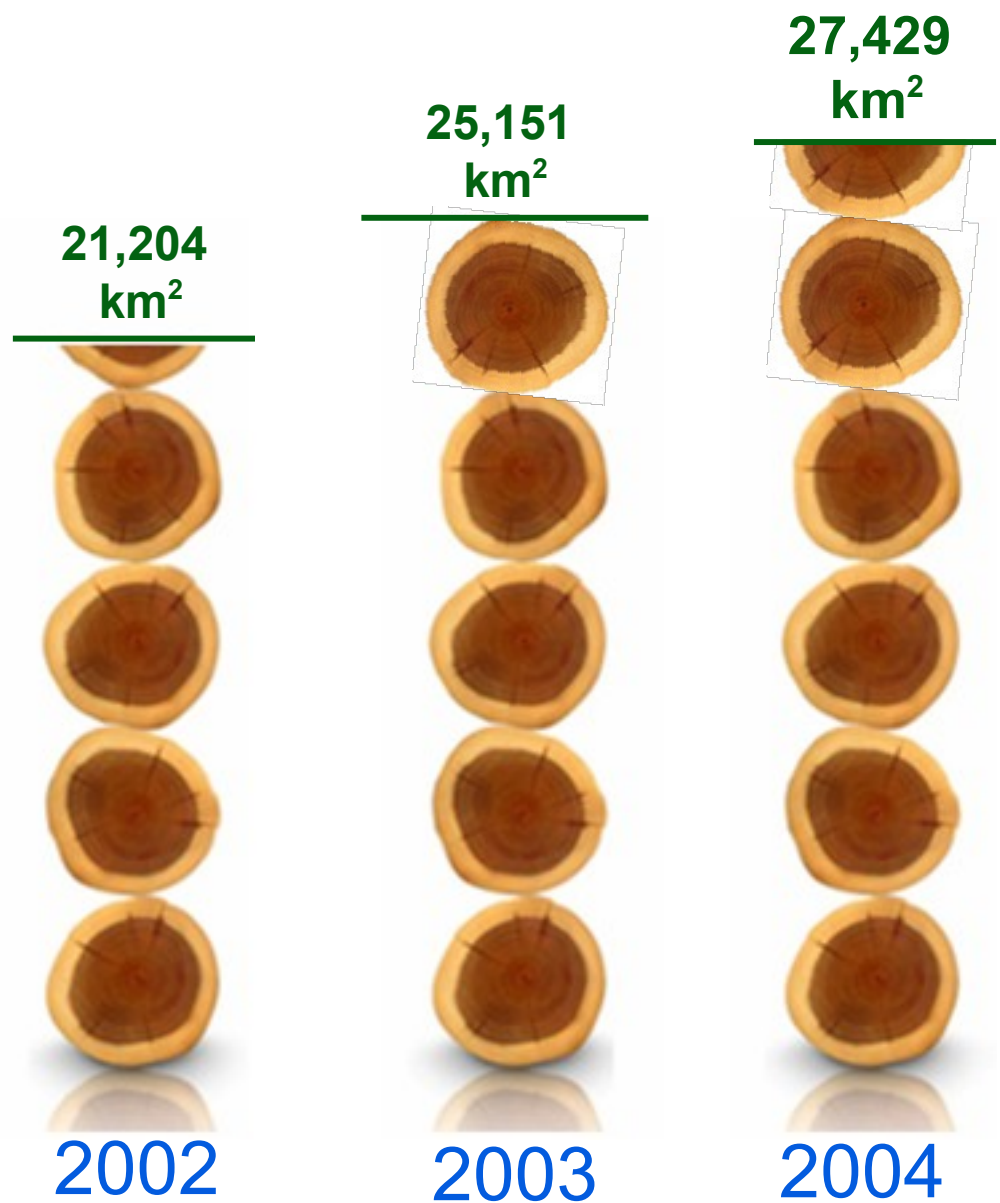




**Still, 85% forest**



**But, we lost 15% in 30 years**



**March 2004** – Action Plan to Prevent and Control Deforestation in the Amazon

**Led by the President's Cabinet** involving 11 Ministries

**144 actions** in three strategies:

- **Land Tenure and Territory Planning**
- **Environmental Monitoring and Control**
- **Incentives to Sustainable Production**

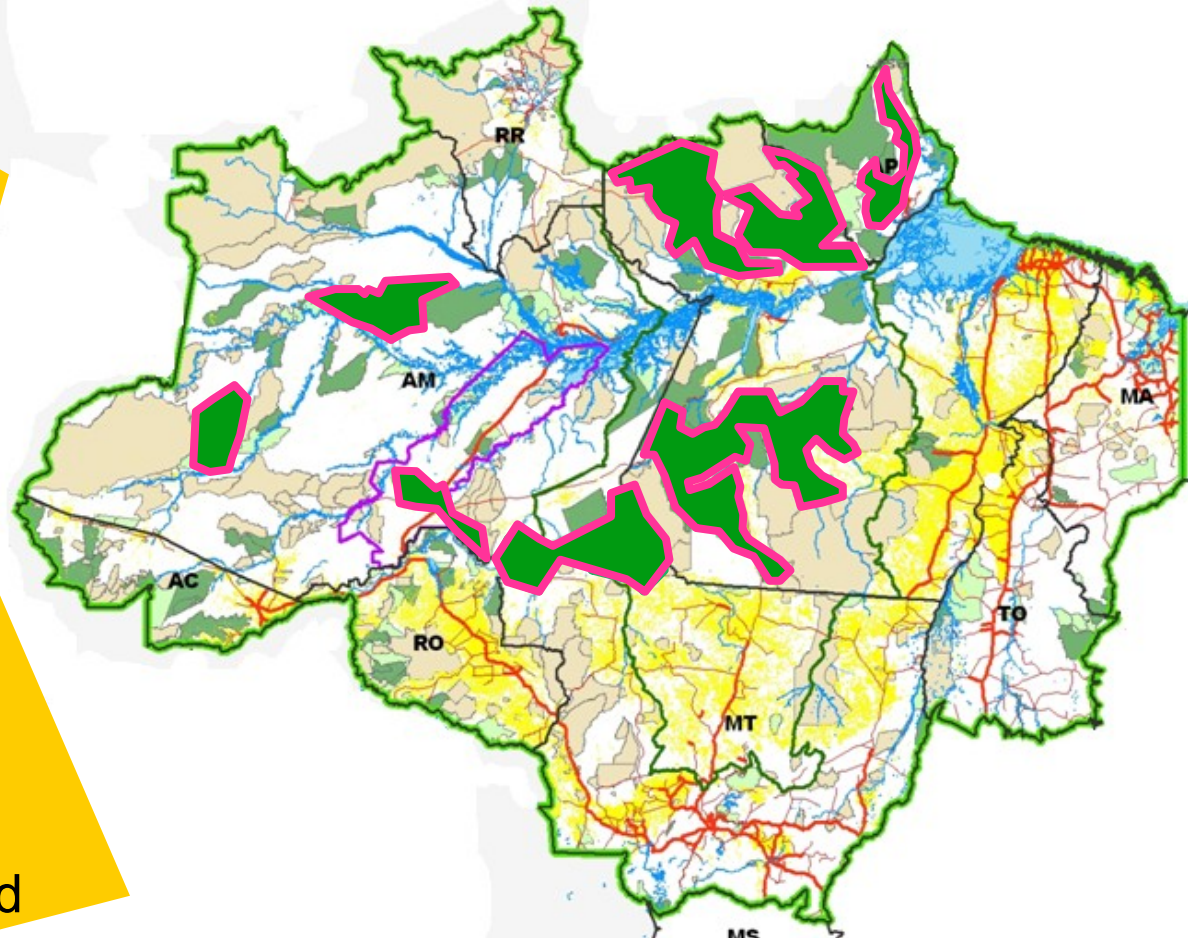
## OUTPUTS → Land Tenure and Territory Planning

**10 million** ha of Indigenous Territories created

**20 million** ha of Protected Areas

**3,9 million** ha of Sustainable Settlement Projects

**66 thousand** illegal land titles canceled



## OUTPUTS → Environmental Monitoring and Control

**1 million m<sup>3</sup> of illegal logs** apprehended

**Over 500 people** in prison including over 110 corrupt public servants

**Real time remote survey system** to monitor deforestation and logging





http://www.obt.inpe.br - DETER - Sistema de Detecção de Desmatamentos em Tempo Real - Microsoft Internet Explorer

Arquivo Editar Exibir Favoritos Ferramentas Ajuda

Coordenação-Geral de Observação da Terra - OBT

Projeto DETER

Parâmetros Básicos

Data Primeira Observação > 2005-06-30

Data Última Observação <= 2005-07-30

Estado TODOS

Base Operativa/ibama TODAS

Satélite MODIS 01

Faixa de Área Maior que 25 ha

Mostrar quem madas Não

Por Região (opcional)

Norte 0.0

Oeste -74.0 Leste -44.0

Sul -18.5

Clique em "Ver/View"

Gráficos

Tipo: Estadual

Histograma

Procurar Município

Nome

Estado TODOS

Ordenar Alfabeticamente

Procurar

Download das imagens MODIS e dados vetoriais

Ajuda...

Desmatamentos detectados nos Municípios ou Unidades de Conservação...

Recompor Imagens Satélite Base Cartografica Mapas Temáticos Tamanho da Tela

Ver/View

Modis 07 Maio 2004/Divisão Política/Nenhuma

S04:00:00 048:00:00

Altamira/PA 2005-07-30 1.0(km2) 98.9(ha)

S16:00:00 064:00:00

ESTE PRODUTO NAO FOI CONCEBIDO PARA CÁLCULO DE ÁREA

Nota: O dado de 30 julho 2005 esta em processo de revisao

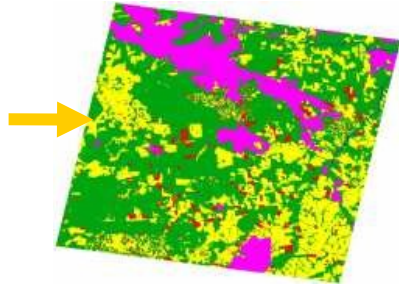
http://www.obt.inpe.br/deter/mosaico.php?LAT=-11.9&LON=-59.8&RES=1&JMA=Modis04&TEM=&TEM2=ams&TAM=M&JDATE=2005-06-30&FDA

Internet

# Monitoring System



**PRODES Project**



**Deforestation previous years**



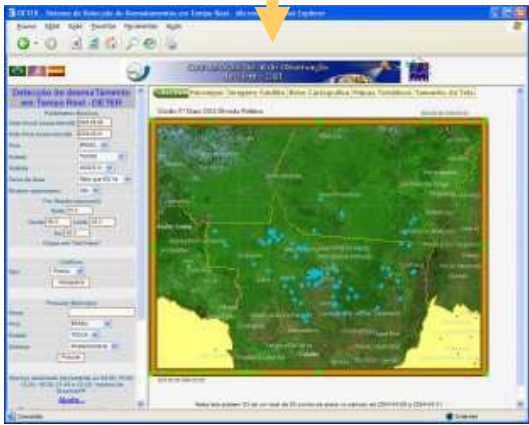
**Most current MODIS image**



**Reception station Cuiabá/MT**

**INPE Processing: detection of new deforested areas**

**Dissemination on the Internet**



**Surveillance: situation room in IBAMA and other institutions**

## OUTPUTS → Incentives to Sustainable Production

**New legislation** and regulation for management of **Public Forests**

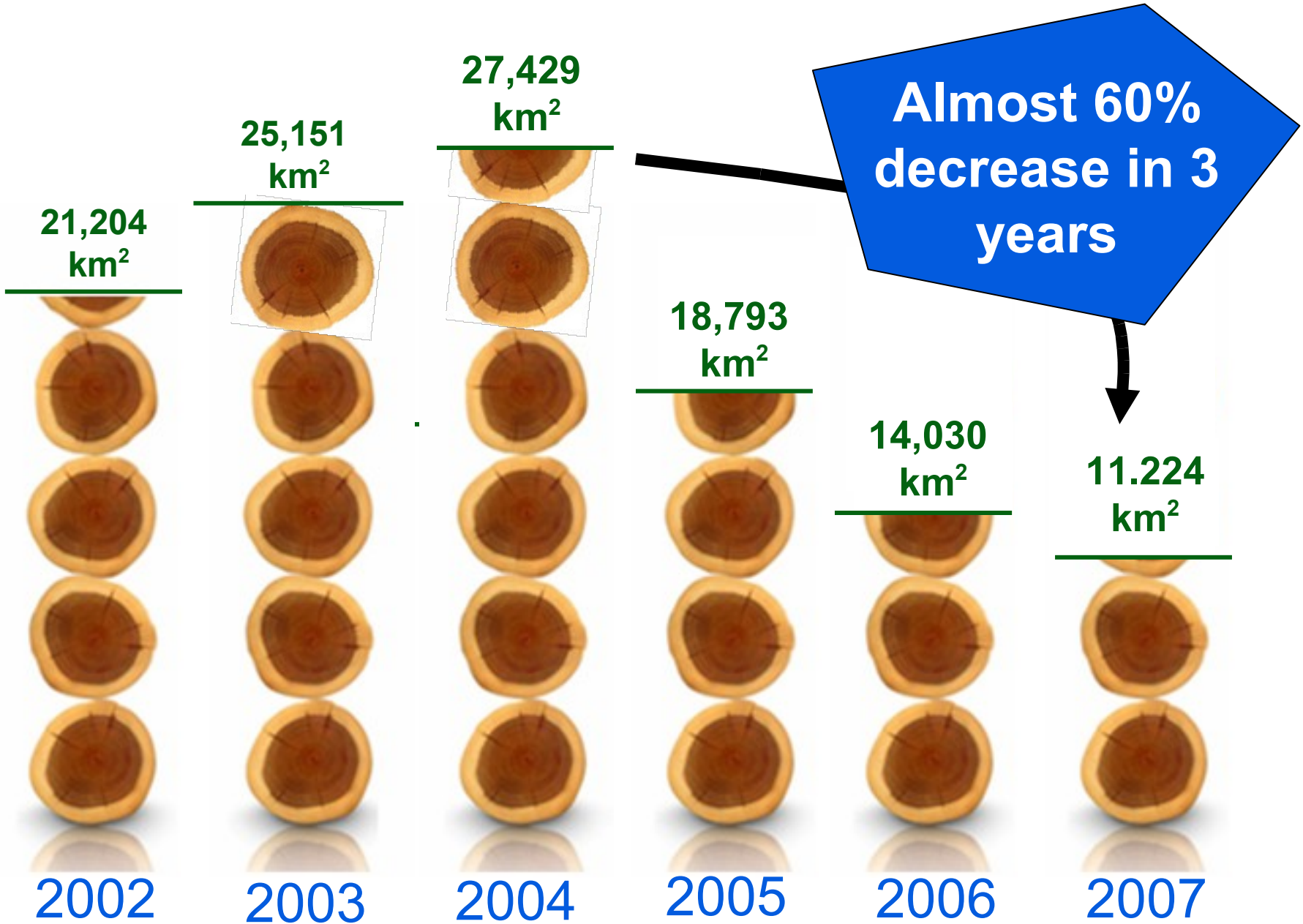
**19 million hectares** of **Sustainable Forest Districts**

**193 million hectares** in the Public Forest Nacional Registry

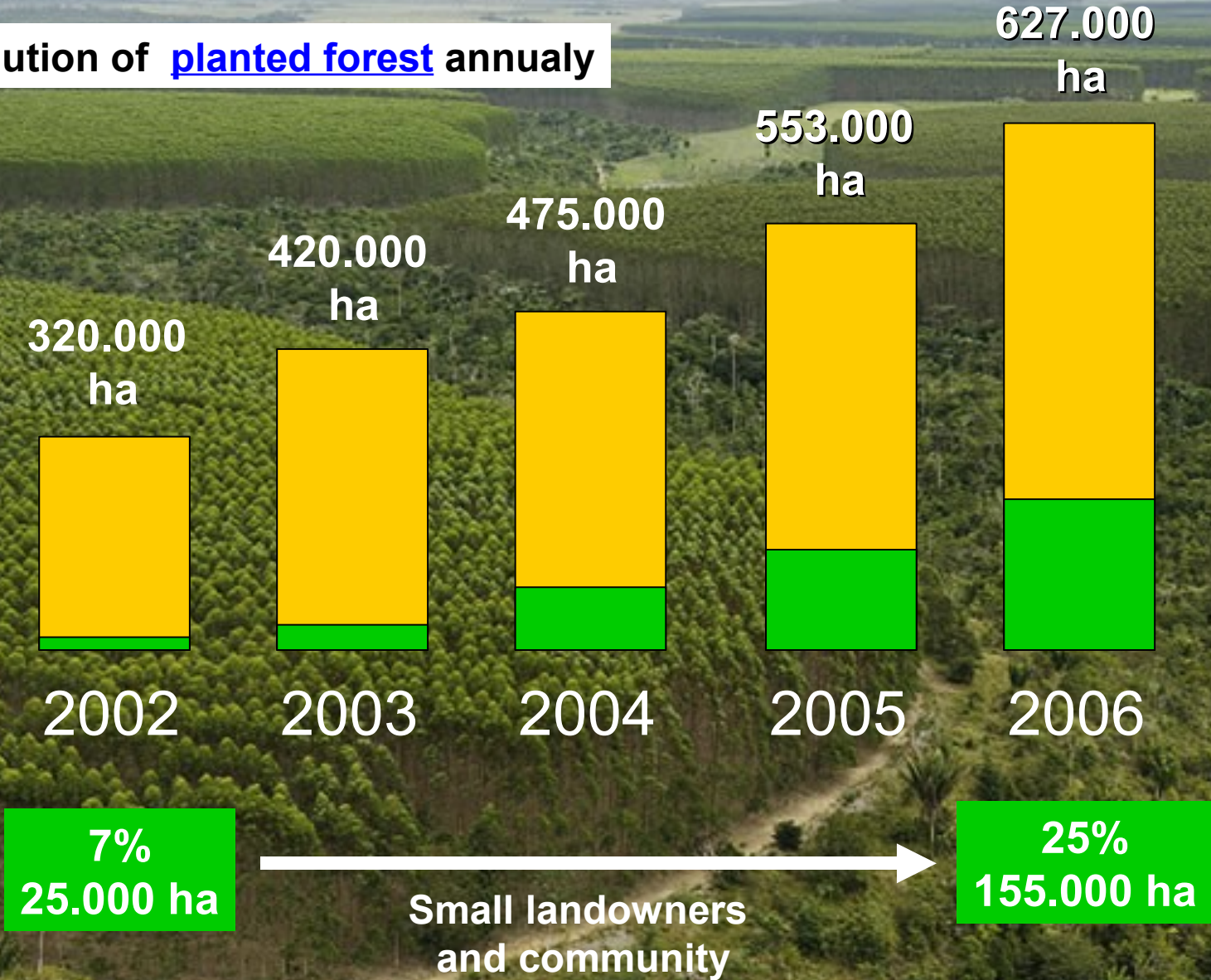
**4 million hectares** of extrativist reserves

Increase on FSC certified forests from 300.000 to **3 million hectares**

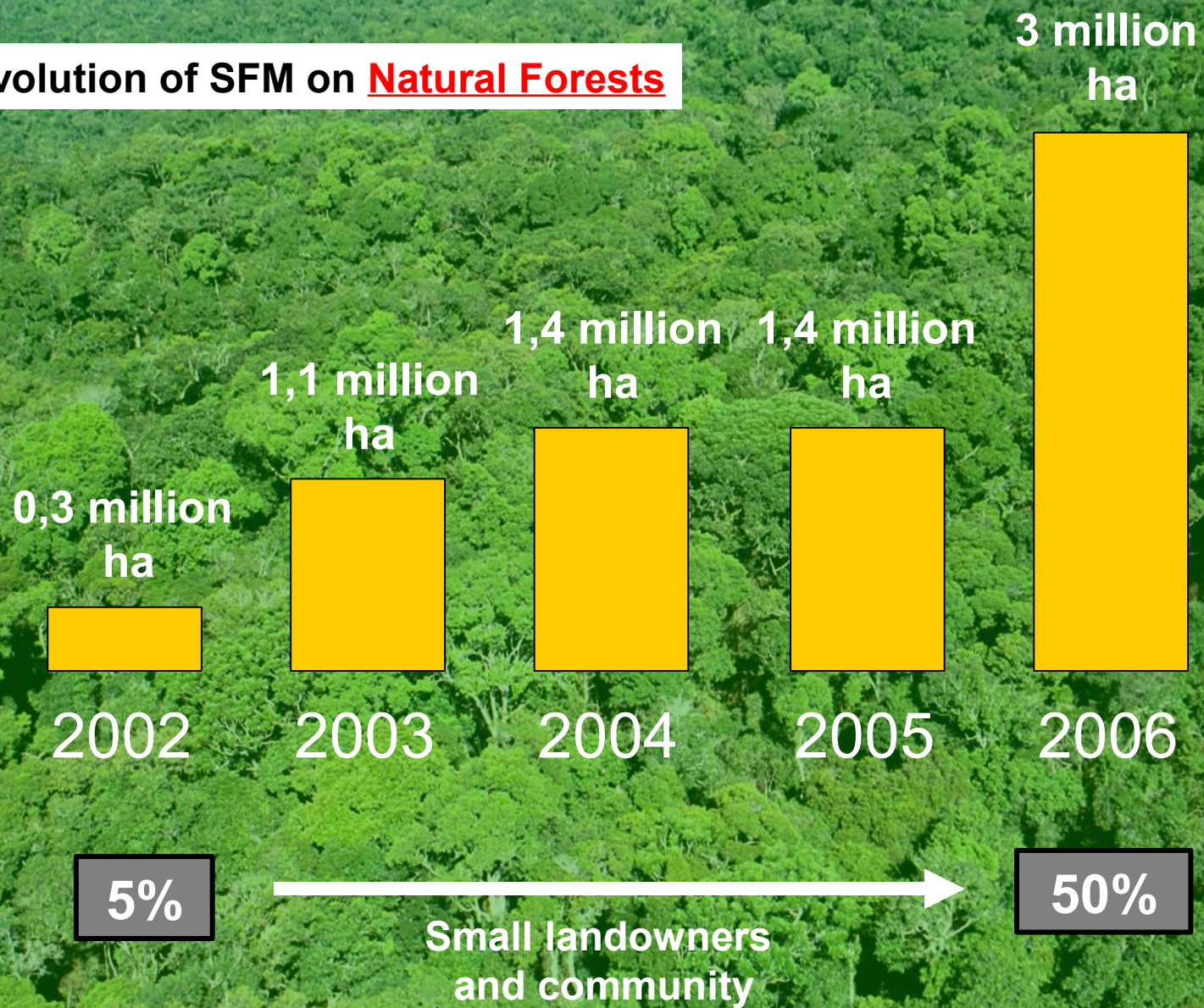




→ Evolution of **planted forest** annually



→ Evolution of SFM on **Natural Forests**



**→ Evolution on benefits to forest communities**

**→ Over 120 million hectares of indigenous lands and forest communities territories are officially recognized and protected.**

**→ 2100 sustainable development projects for extrativists in Brazil involving 110 thousand families.**



**Goal** → promote the continuous and consistent decrease of deforestation rate in Brazil

**Main Challenge:**

Make forest more valuable than the alternative use of land

**The incentives for RED can be an excellent opportunity to mobilize resources to face this challenge**