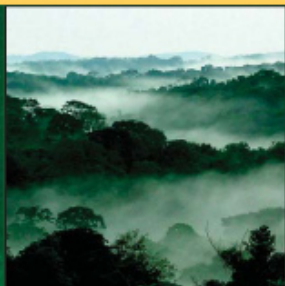
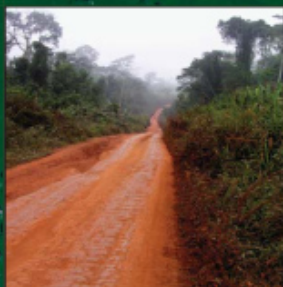




RAPPORT WRI



BENOIT MERTENS  
SUSAN MINNEMEYER  
LAWRENCE AYENIKA NSOYUNI  
MATTHEW STEIL



ATLAS FORESTIER INTERACTIF DU CONGO

VERSION 1.0

*Document de Synthèse*

# Strengthening forest law enforcement in the Republic of Congo through remote sensing technology and information systems

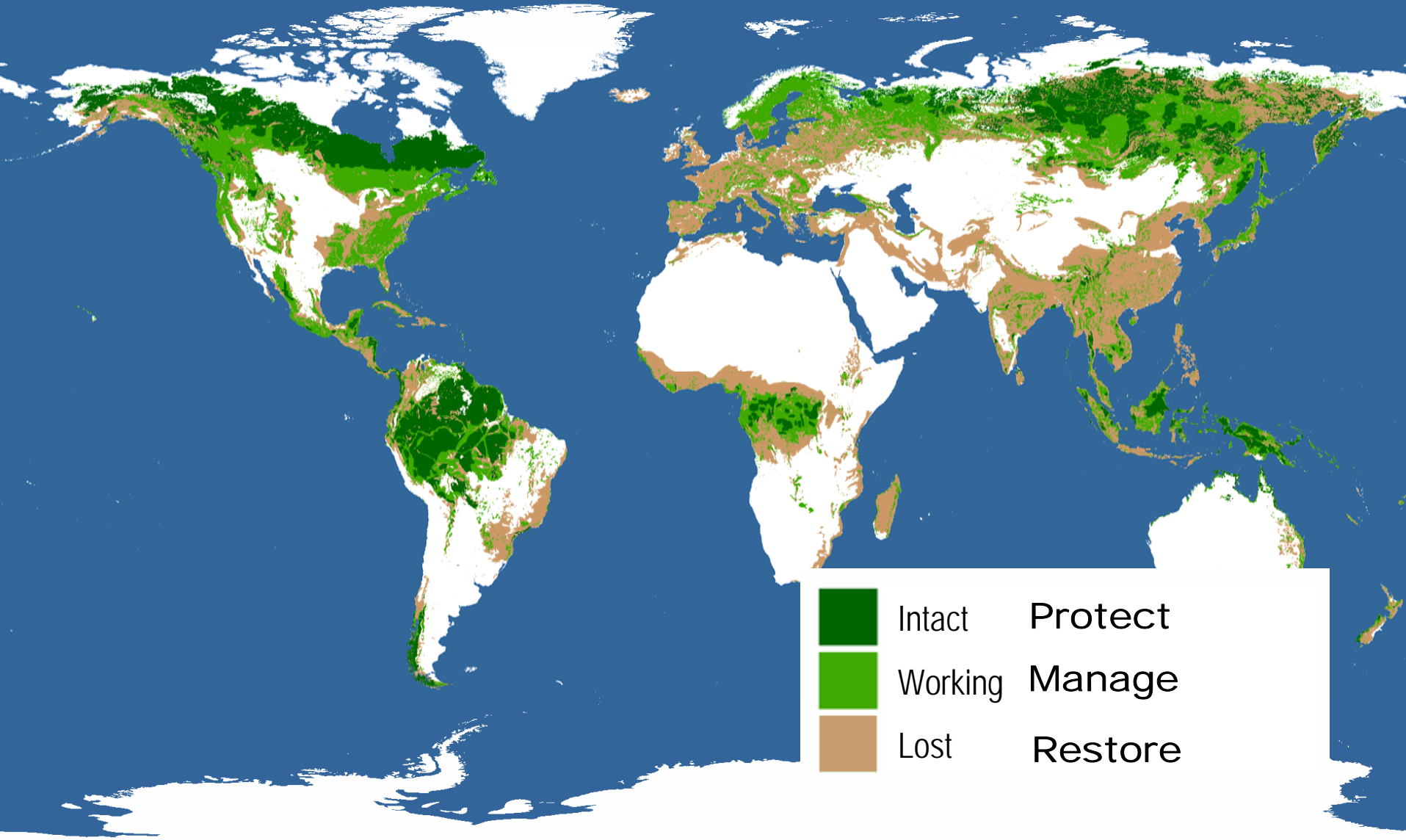
Susan Minnemeyer  
Global Forest Watch  
World Resources Institute  
Washington, DC

December 8, 2007

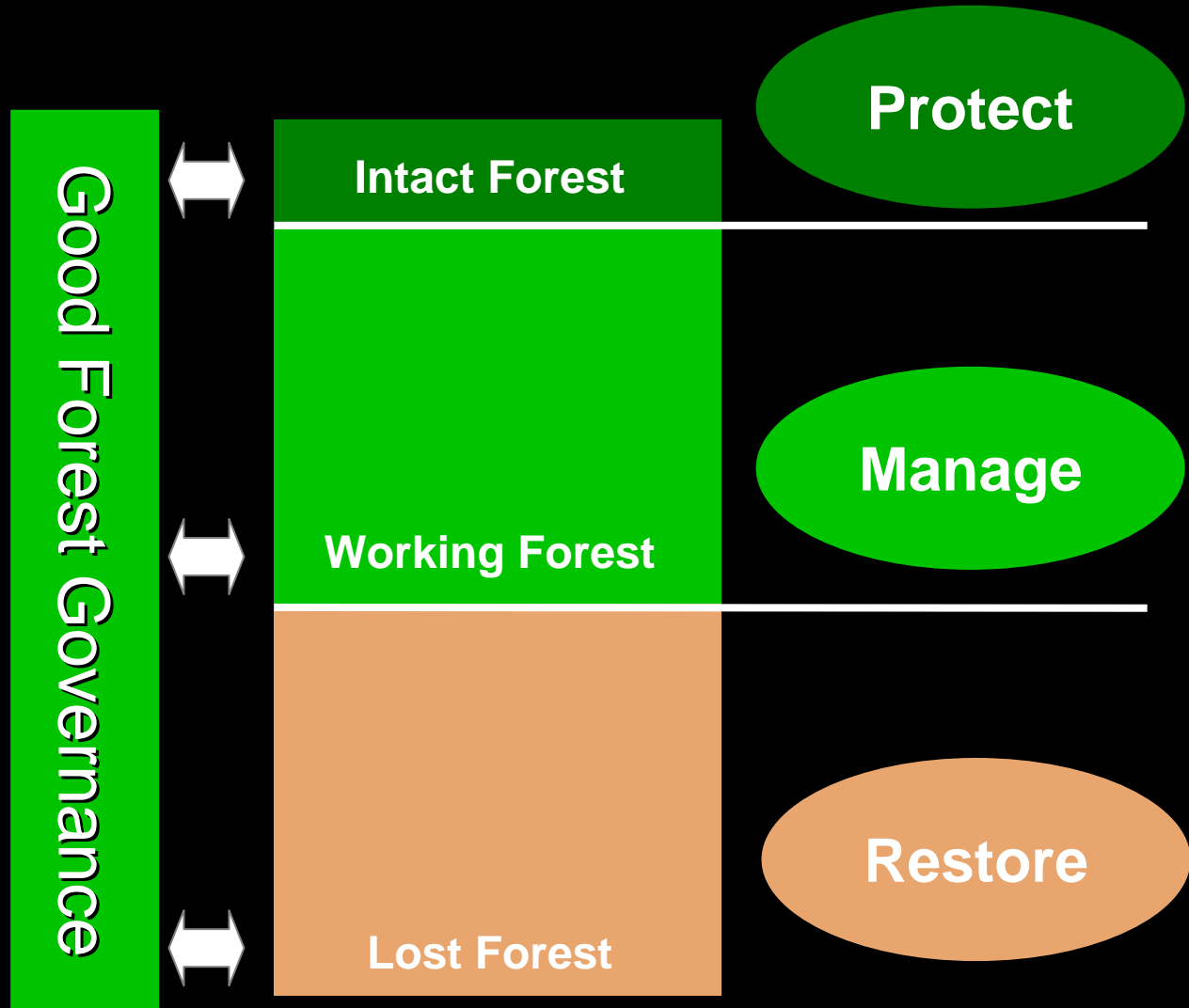


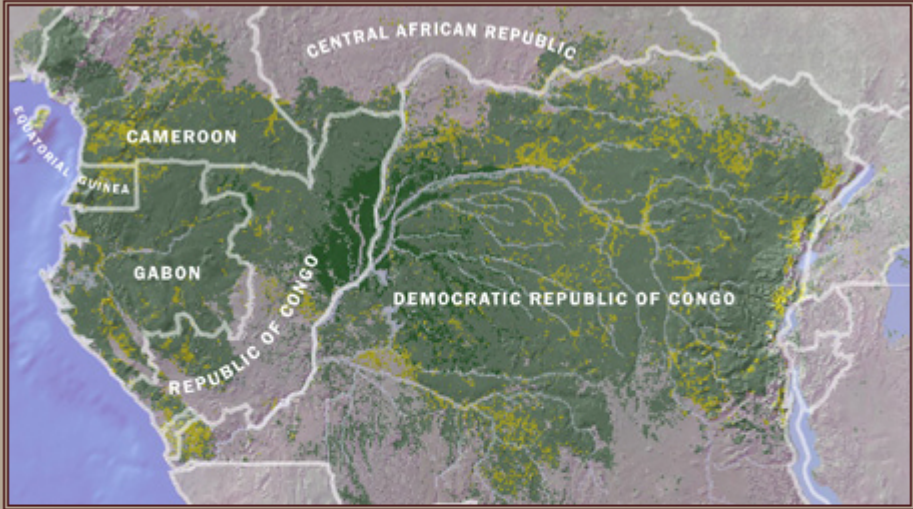
WRI

# Three Landscapes, Three Goals



# WRI's Goals





- Swamp forest
- Lowland rainforest
- Secondary forest



# WRI's team in Central Africa

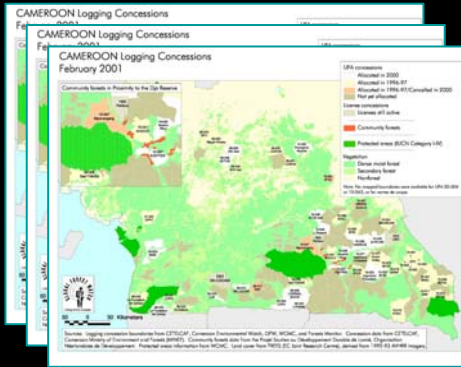
- **Benoit Mertens, Program Manager**
- **Lawrence Nsoyuni, GIS Manager**
- **MOUs with Congo Ministère de l'Economie Forestière (2004, 2006)**
- **Funding: ITTO (Congo) and CARPE (Central Africa)**



# Strategy

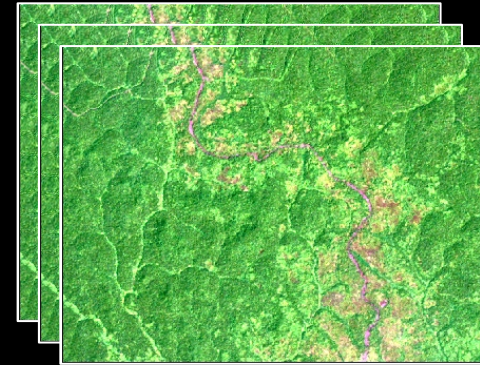
- Improve access to critical information
- Multistakeholder collaboration
- Take advantage of latest mapping technologies
- Build local capacity



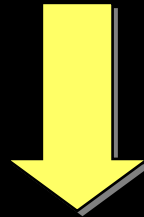


**Accurate reference maps**

+



**Reliable forest monitoring**



**Decision support**

**Transparency**

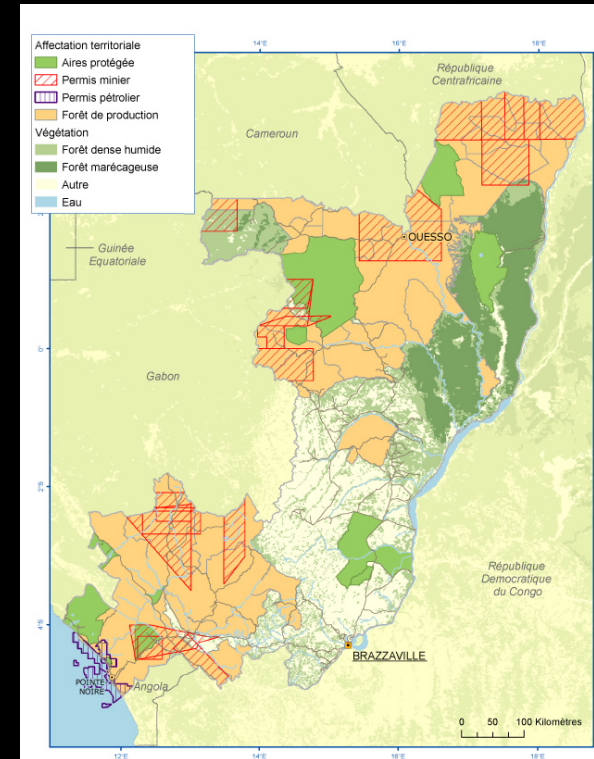
**Accountability**

**Governance**

**Law enforcement**

# Priority activities

- Development of tools for improved forest management –
  - Interactive forestry atlas,
  - Forest management database
- Training and capacity building – data collection, data management, mapping
- Technical assistance in using information for decision making
- Follow regional initiatives focusing on improved forest management  
COMIFAC, CARPE, FLEGT-AFLEG





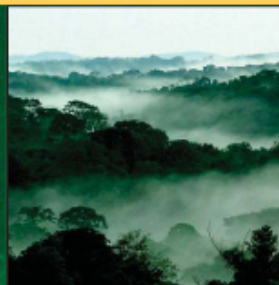


RAPPORT WRI



WORLD  
RESOURCES  
INSTITUTE

WRI



BENOIT MERTENS

SUSAN MINNEMEYER

LAWRENCE AYENIKA NSOYUNI

MATTHEW STEIL

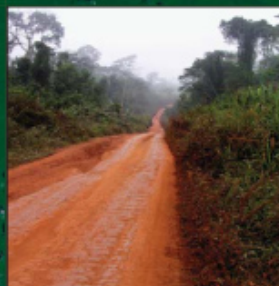
BENOIT MERTENS

MATTHEW STEIL

LAWRENCE AYENIKA NSOYUNI

ANDREW NEBA SHU

SUSAN MINNEMEYER



# ATLAS FORESTIER INTERACTIF DU CONGO

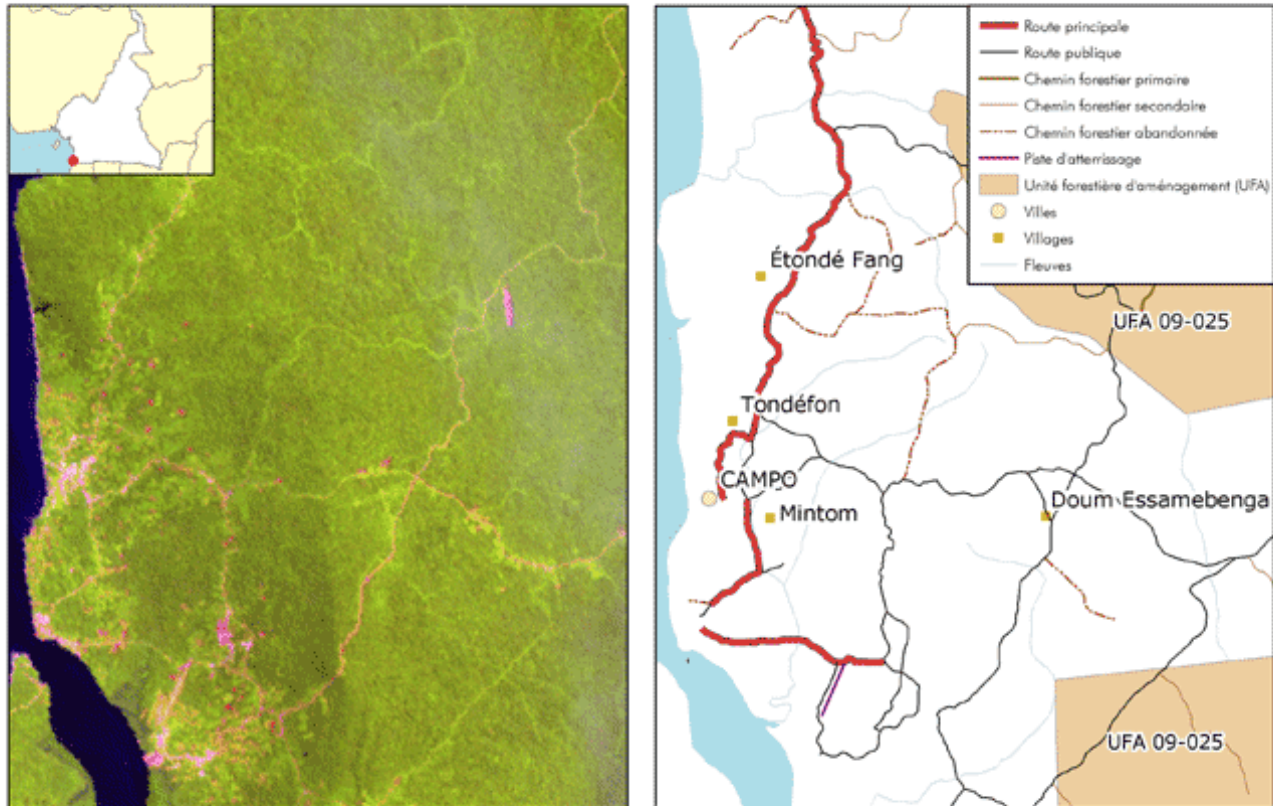
VERSION 1.0

*Document de Synthèse*



# Road mapping

CARTE 1 Comparaison des images satellitaires avec les caractéristiques cartographiques de cet atlas



a. Vue de l'image Landsat utilisée pour l'interprétation routière (région de Campo, province méridionale).

b. Vue des routes correspondantes numérisées à partir de l'imagerie Landsat, avec des données de cet atlas incluant les limites des UFA.



# Challenges

- **Need for suitable substitute for Landsat imagery – ASTER, ALOS**
- **Use of SLC-off images**
- **Persistent cloudiness**
- **Test of radar data**



# Next steps

- Update Congo Atlas
- Forest atlases for the entire Central Africa region
- Training
- Monitoring impacts
- Improve methods





**Thank you**