



# ITTO Side Event (1)

## SFM for REDD: from acronyms to implementation in the tropics



# FOREST CANOPY DENSITY MAPPING FOR FOREST CLIMATE CHANGE MITIGATION, FLR AND SFM: PHILIPPINE EXPERIENCE\*

**Dr. Merlinda R. Manila**  
Chief, Forest Resources Development Division  
& Coordinator, DENR IV-ITTO FORMS Project

\*Paper Presented at ITTO Side Event at COP 13 of UNFCCC on Forest Day  
Bali Room, Ayodya Hotel, Nusa Dua, Bali, Indonesia, December 8, 2007

# FCD TECHNOLOGY

- The project, PD 239/03 Rev.1 (F), was implemented in the Philippines (DENR CALABARZON Region) from 2004-2006 under the auspices of ITTO thru Governments of Japan and Republic of South Korea
- Forest Canopy Density (FCD) Mapper Ver2 software was developed by Dr. Atsushi Rikimaru of JOFCA for ITTO
- FCDM utilizes LANDSAT and ASTER images to generate forest canopy density maps showing the stratified forest cover

**One of the basic objectives of FCD project is to enable policy-makers to access information on the status of forest conditions and formulate science-based decisions and actions.**

**Definition: Forest Canopy Density (FCD) refers to the proportion of an area in the field/ground that is covered by the crown of trees and is expressed in percentage of the total area.**

# SATELLITE IMAGES (LANDSAT ETM7) - RAW DATA

2002-Apr-03

116-49



116-50



2002-Mar-27

115-50



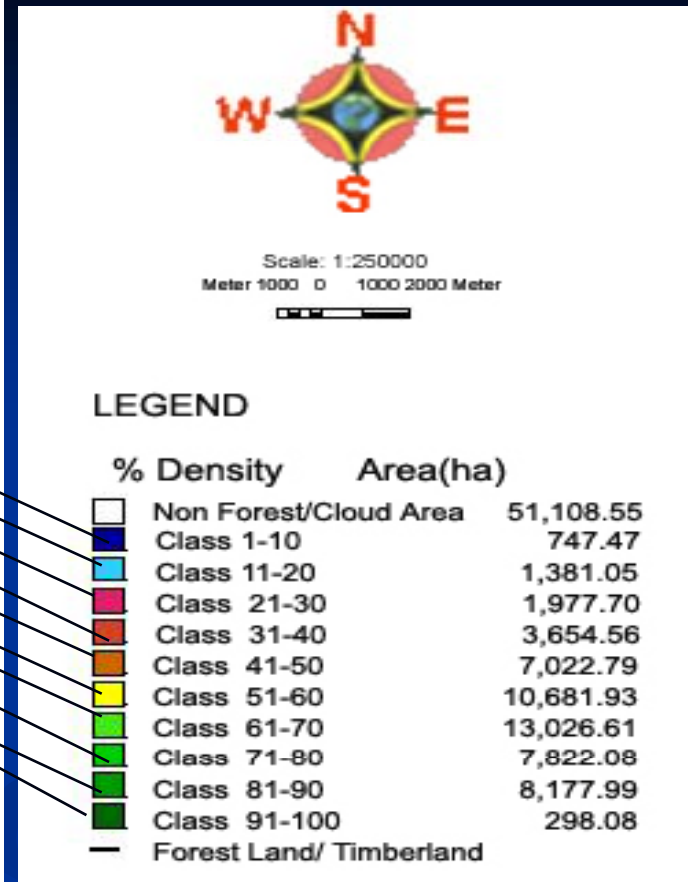
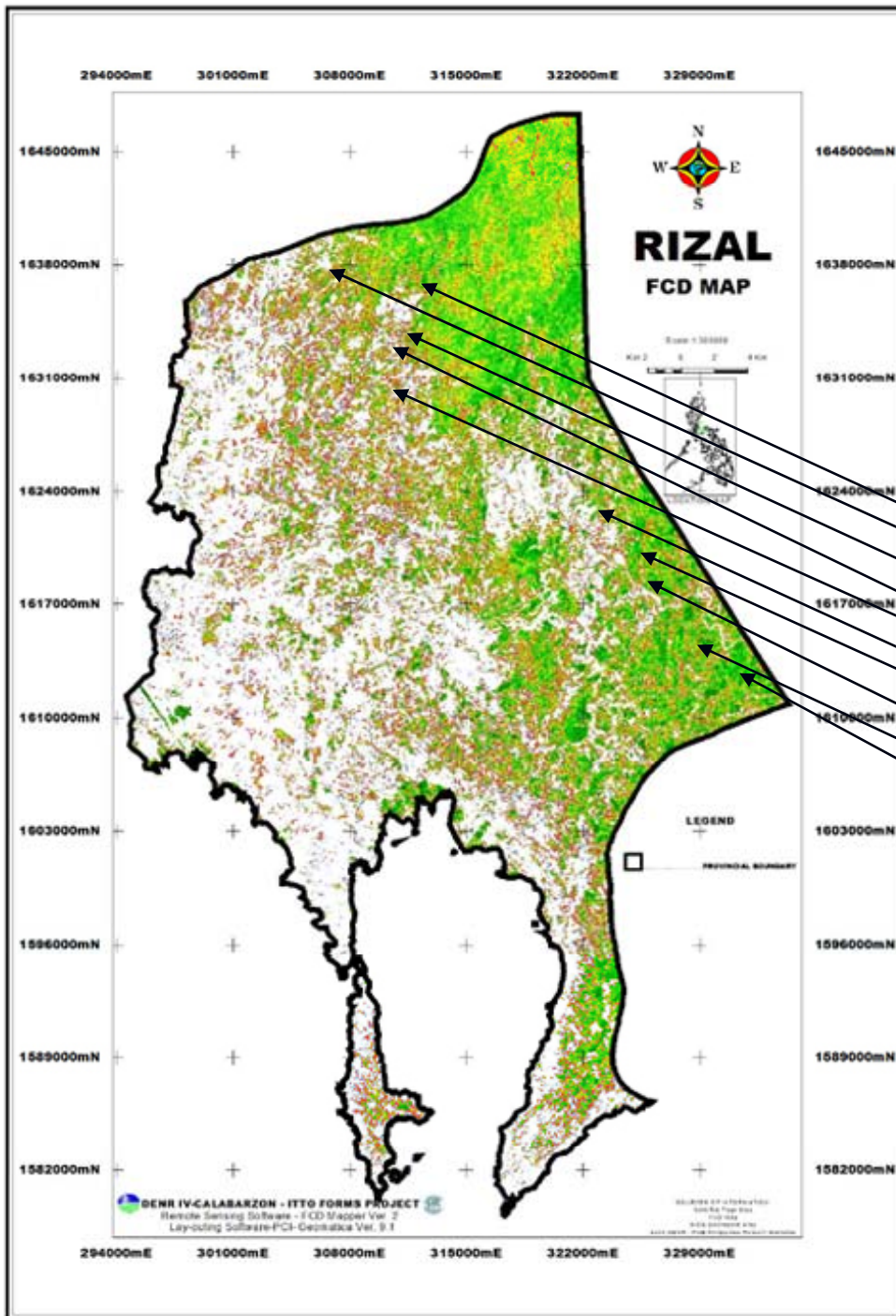
115-51



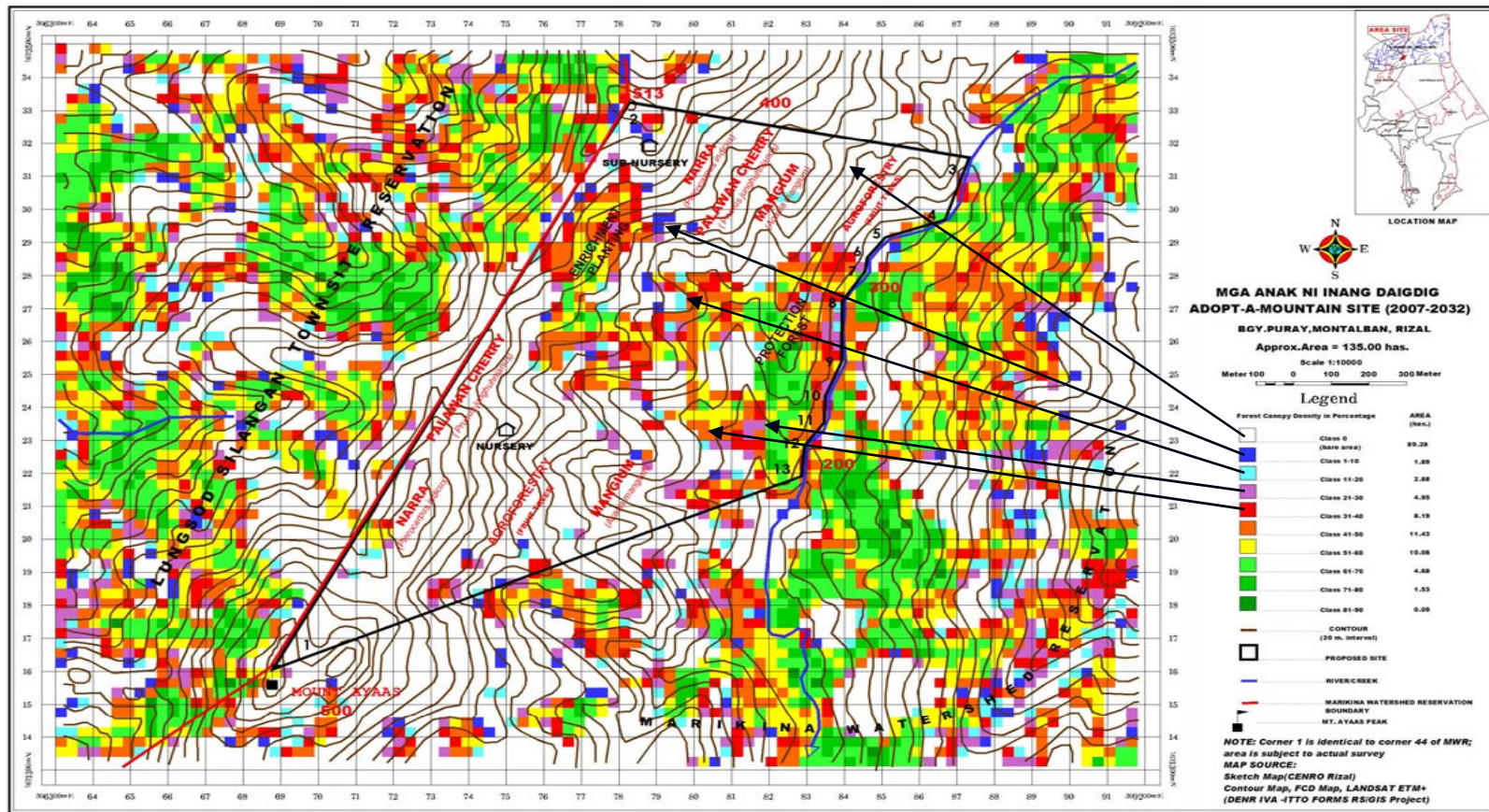
Forest  
Canopy  
Density  
Software  
used to  
generate  
digital  
stratified  
forest cover  
maps







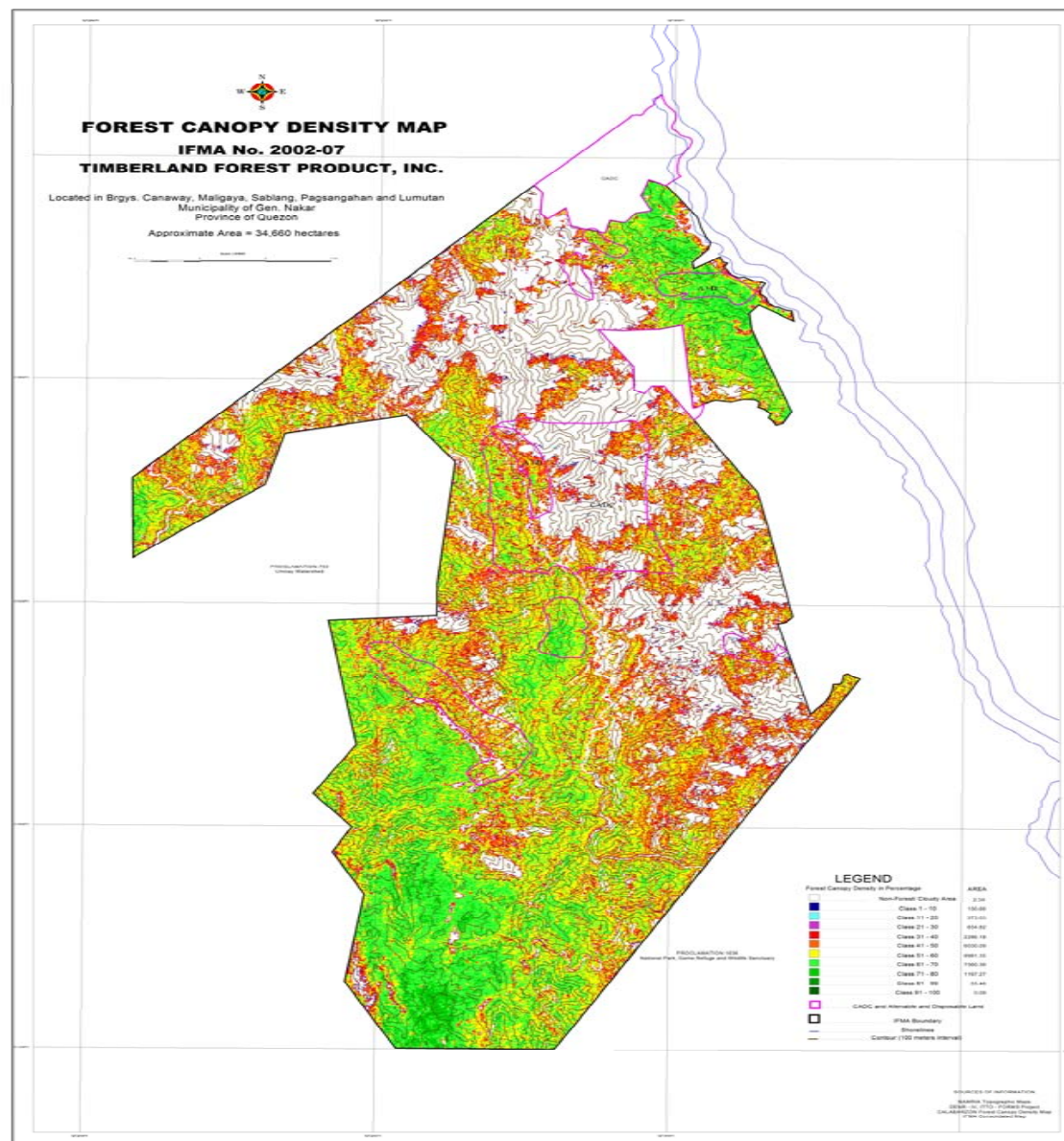
Map showing the stratified forest cover in different canopy density classes (1-100%) using FCD software



Closer view of FCD map showing degraded areas  
 (open/marginal sites w/ 1- 40% crown cover density)  
 addressing climate change mitigation, REDD,  
 CDM, SFM and FLR concerns

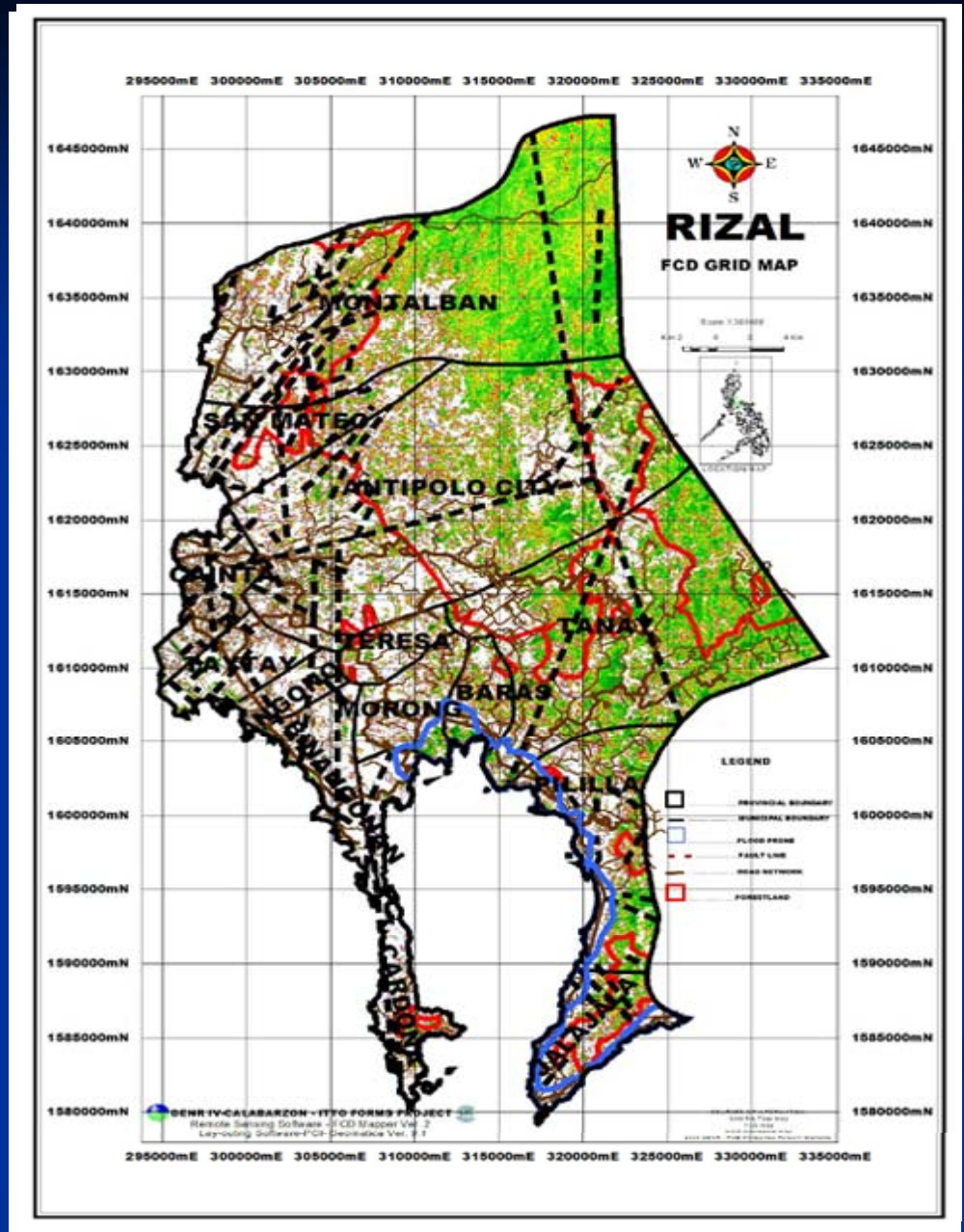


**FCD Map of an Industrial Forest Management Agreement (IFMA) showing existing natural vegetation cover for SFM (e.g. harvesting, silvicultural treatments, reforestation, afforestation, NTFPs, protection, etc.) another feature of FCDM**



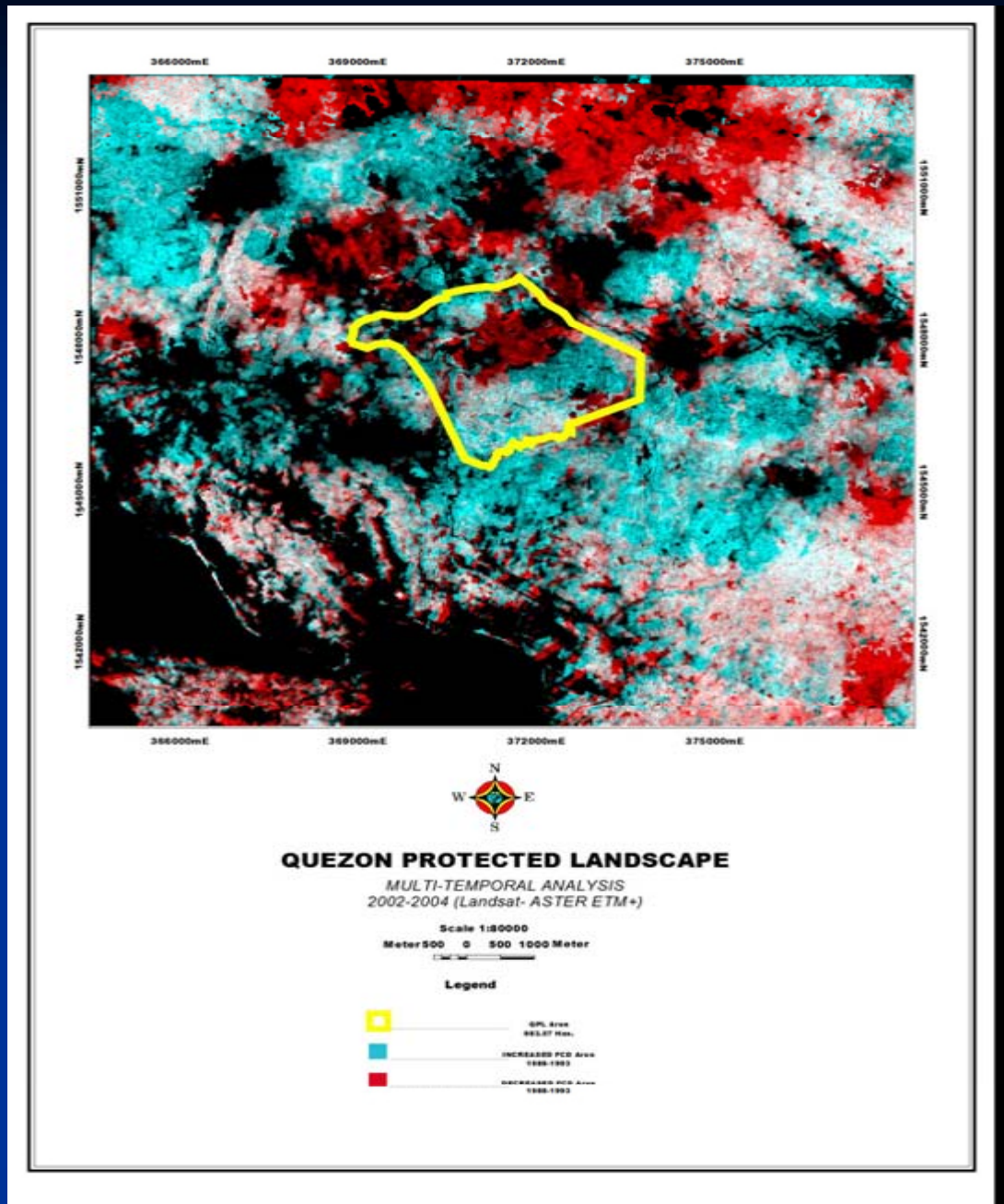


**FCD Map  
superimposed  
with various  
themes (e.g.  
boundary, land  
classification,  
road networks,  
river system,  
fault line and  
grid lines) for  
decision making**



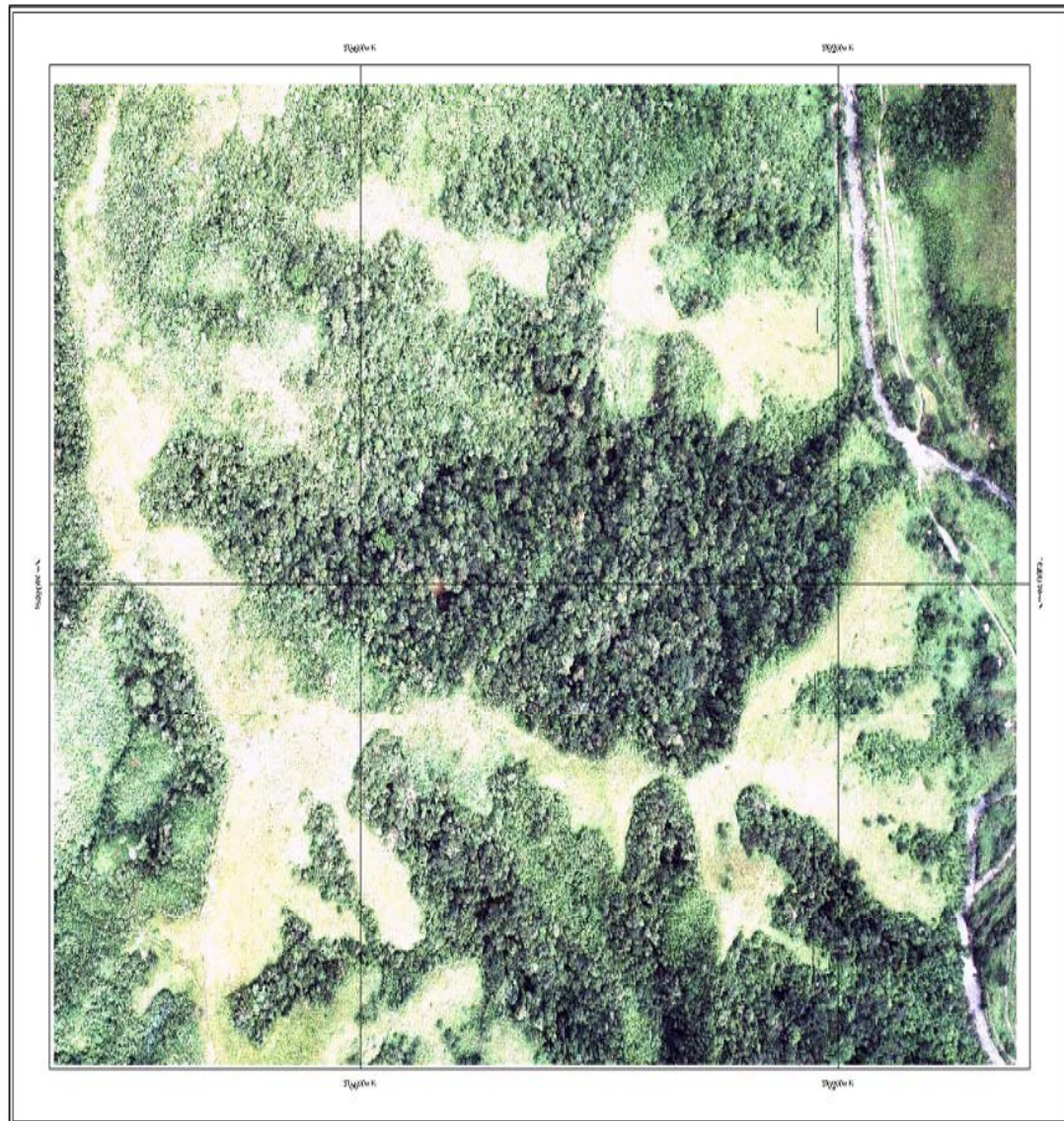
FCD data/output used to generate status of forest cover over time using different satellite data sets (or time series).

Results can be used as a tool for CDM activities, i.e. C-credit trading purposes over the same area

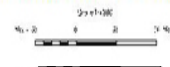




**FCD Map  
superimposed with  
aerial photo  
showing positive  
correlation (map  
data is highly  
correlated with  
ground data),  
hence, cost-  
effective for SFM,  
FLR, REDD, CDM  
and Climate  
Change Mitigation  
activities**

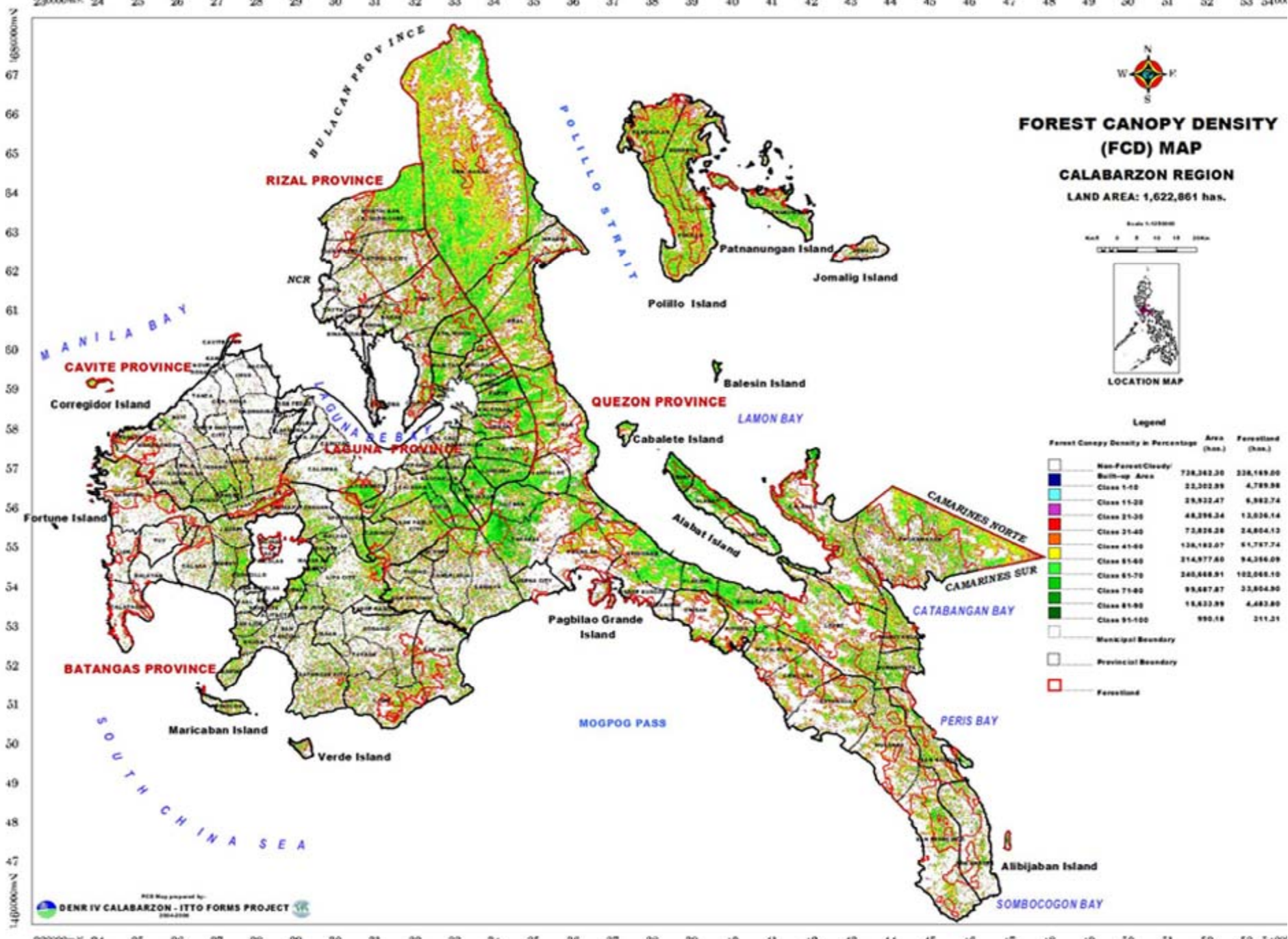


AERIAL PHOTOGRAPH





230000mE 24 25 26 27 28 29 30 31 32 33 34 35 36 37 38 39 40 41 42 43 44 45 46 47 48 49 50 51 52 53 54000



**FOREST CANOPY DENSITY (FCD) MAP**  
**CALABARZON REGION**  
 LAND AREA: 1,622,861 has.

Scale 1:100,000  
 MAP 0 5 10 15 20km



LOCATION MAP

**Legend**

Forest Canopy Density in Percentage	Area (has.)	Forestland (has.)
Non-Forest/Cloudy	738,262.20	226,169.00
Build-up Area	22,202.99	4,789.98
Class 1-10	29,922.47	6,982.74
Class 11-20	48,296.24	12,036.14
Class 21-30	72,826.28	24,804.12
Class 31-40	128,182.07	61,787.74
Class 41-50	214,977.60	94,266.09
Class 51-60	262,668.91	102,065.10
Class 61-70	99,887.87	22,804.90
Class 71-80	18,633.89	4,482.80
Class 81-90	990.18	211.21
Municipal Boundary		
Provincial Boundary		
Forestland		

230000mE 24 25 26 27 28 29 30 31 32 33 34 35 36 37 38 39 40 41 42 43 44 45 46 47 48 49 50 51 52 53 54000

# THE WAY FORWARD

Forest Canopy Density (FCD) technology has been tested to generate digital stratified forest cover maps and status of forest cover over time (time series) geared towards cost-effective operations for SFM, FLR, REDD, CDM and Climate Change Mitigation activities.

Thus, it is recommended to use FCD technology as a tool in identifying/delineating suitable areas for climate change mitigation, FLR, SFM, REDD and CDM concerns through a possible resolution between ITTO and UNFCCC.



