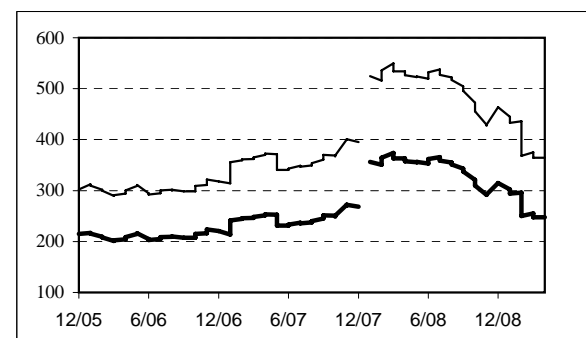
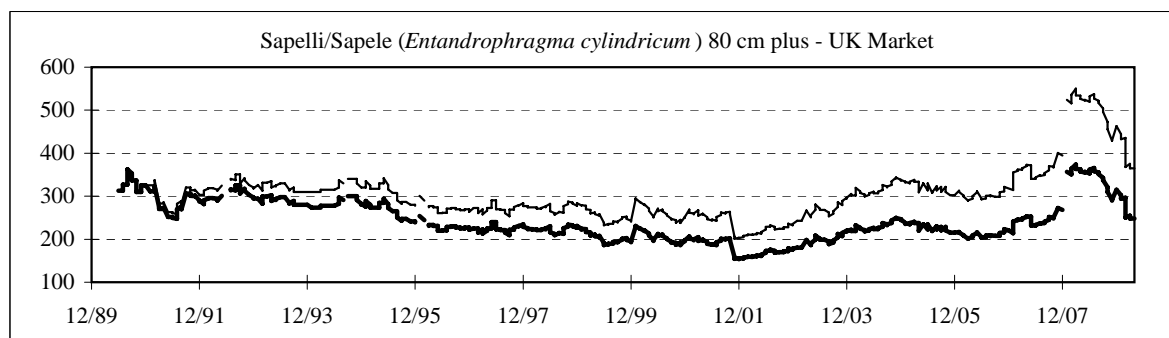
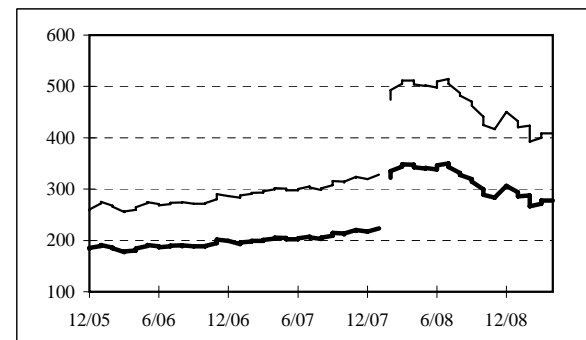
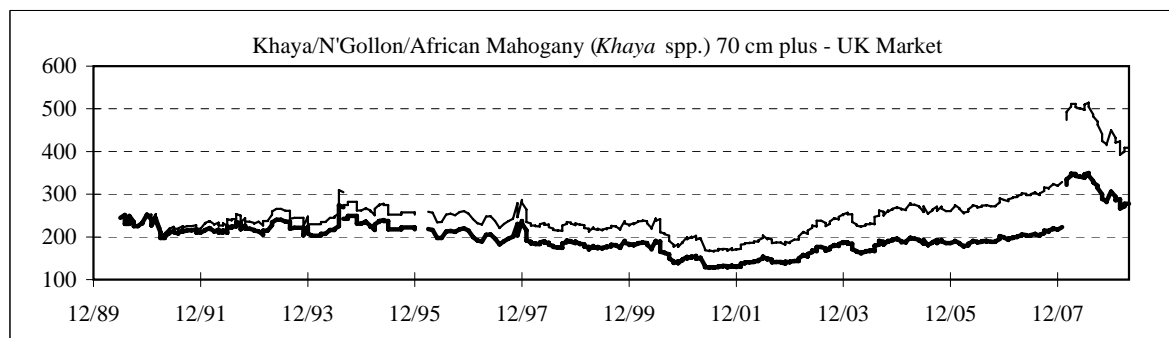


4-1-a. Price of Cameroon Logs, 1990-2009

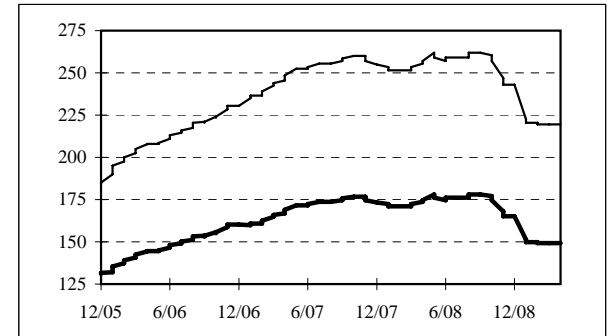
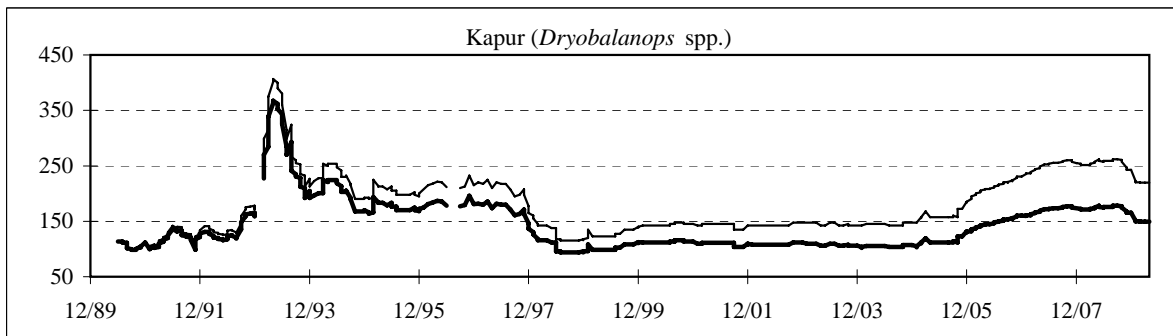
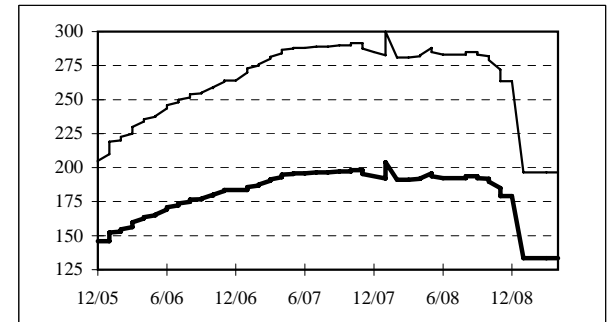
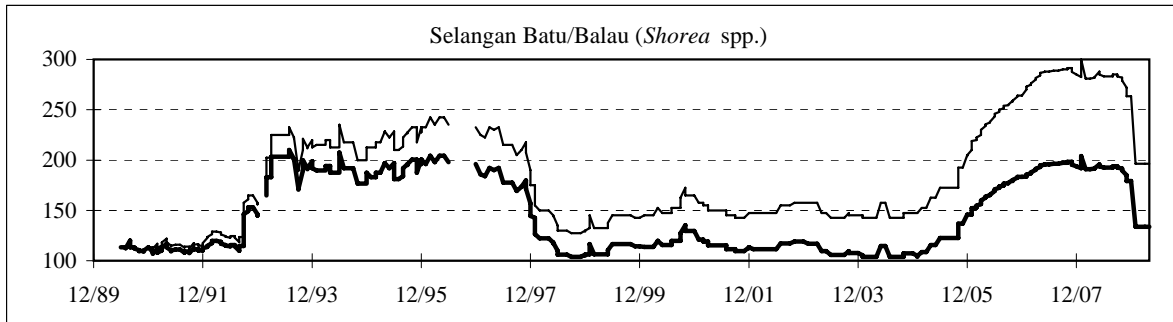
Bold lines show FOB prices in constant 1990 US\$ per cubic meter (deflated by the IMF's Consumer Price Index for industrial countries). Normal lines show nominal FOB price trends. Graphs on this page show major log export species from Cameroon. Grades are Loyal et Marchand or equivalent.

The price series to December 2007 has been discontinued. A new price series was initiated in January 2008 based on a wider sample size.



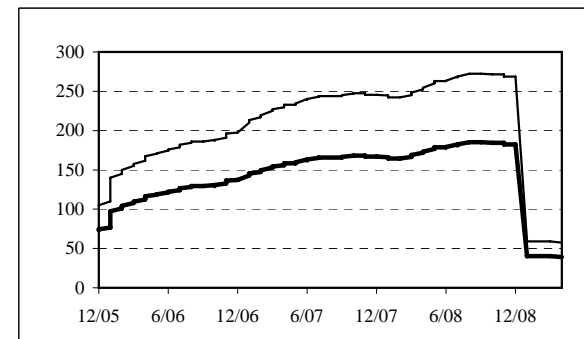
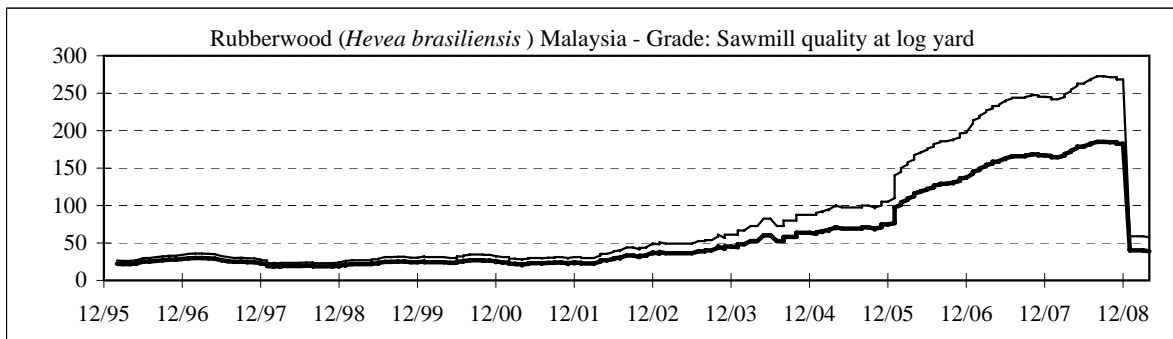
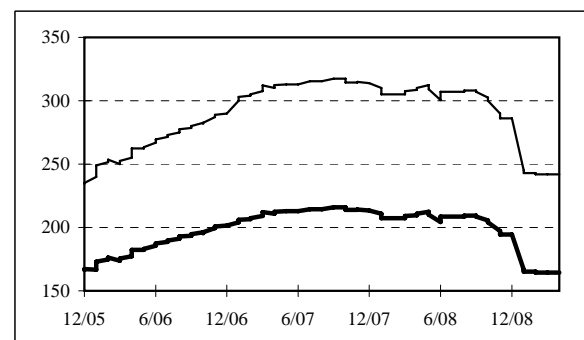
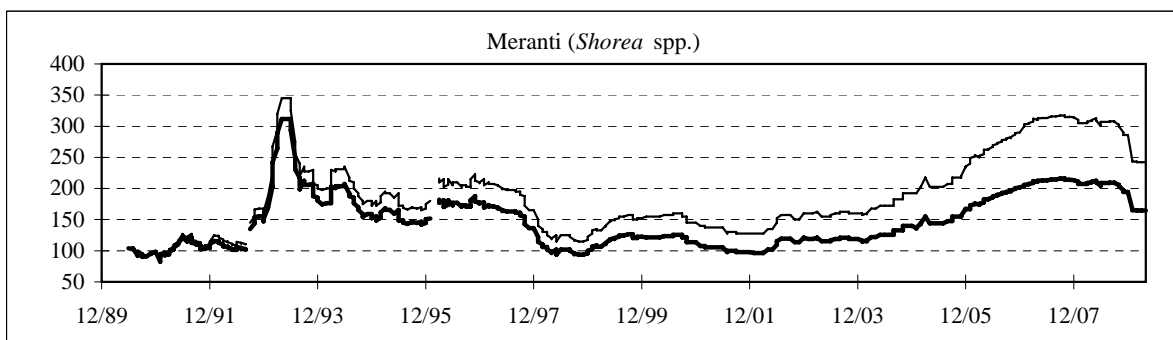
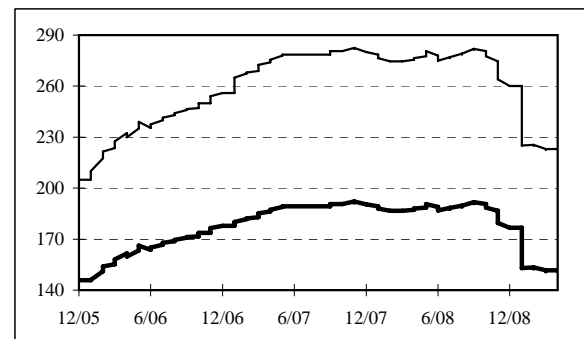
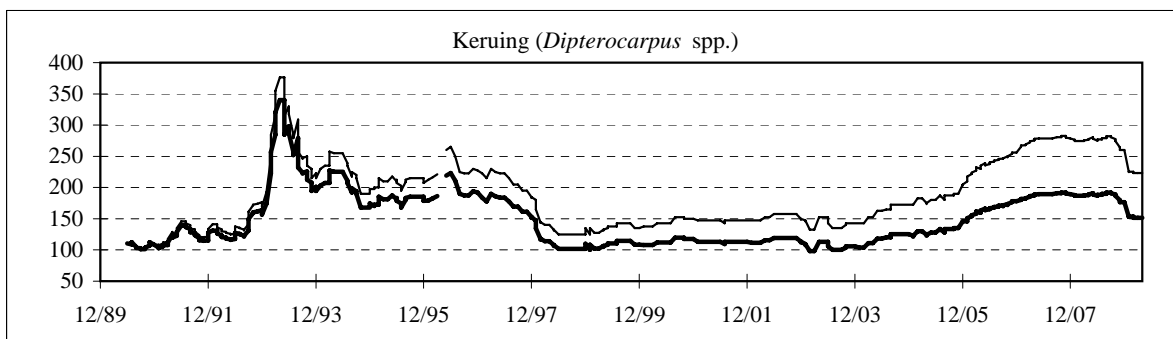
4-1-b. Price of Malaysian Logs, 1990-2009

Bold lines show FOB prices in constant 1990 US\$ per cubic meter (deflated by the IMF's Consumer Price Index for industrial countries). Normal lines show nominal FOB price trends. Graphs on this page show major log export species from Malaysia. Grades are Sawmill Quality and up.



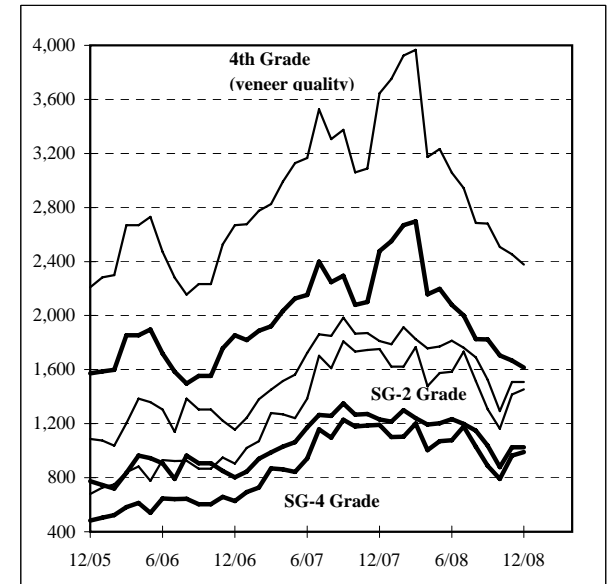
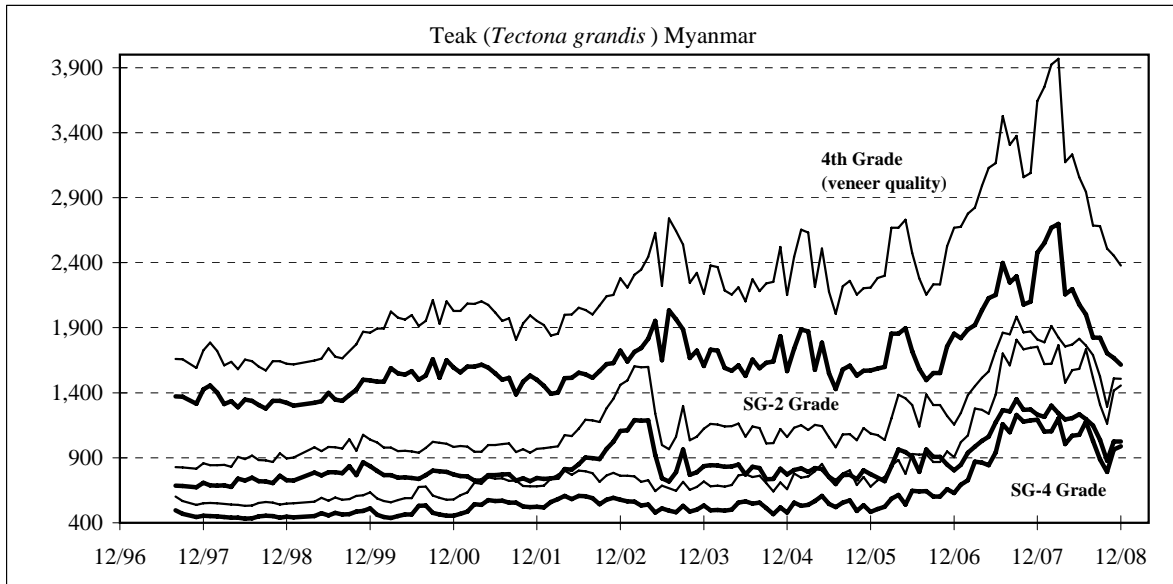
4-1-b. Price of Malaysian Logs (cont.), 1990-2009

Bold lines show FOB prices for Keruing and Meranti and domestic prices for Rubberwood in constant 1990 US\$ per cubic meter (deflated by the IMF's Consumer Price Index for industrial countries). Normal lines show nominal FOB price trends. Graphs on this page show major log export species from Malaysia. Grades are Sawmill Quality and up.



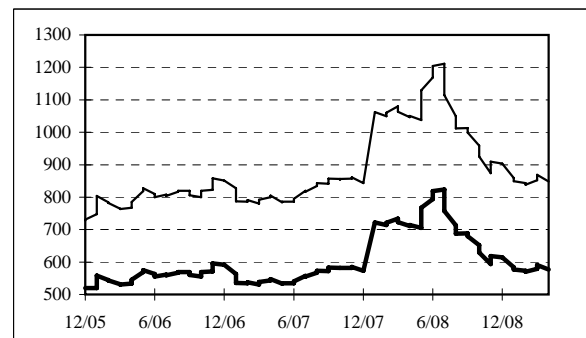
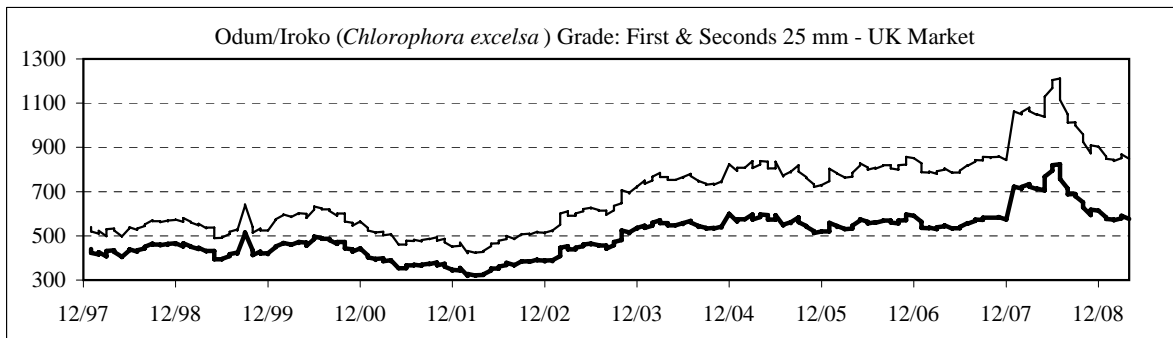
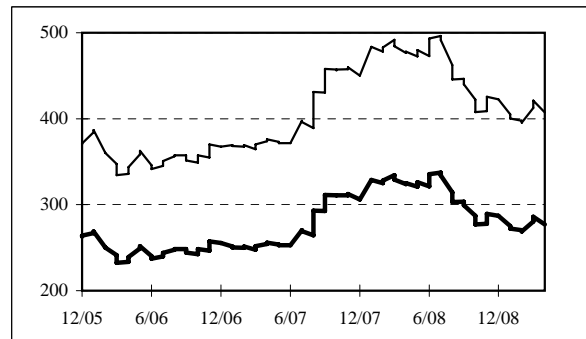
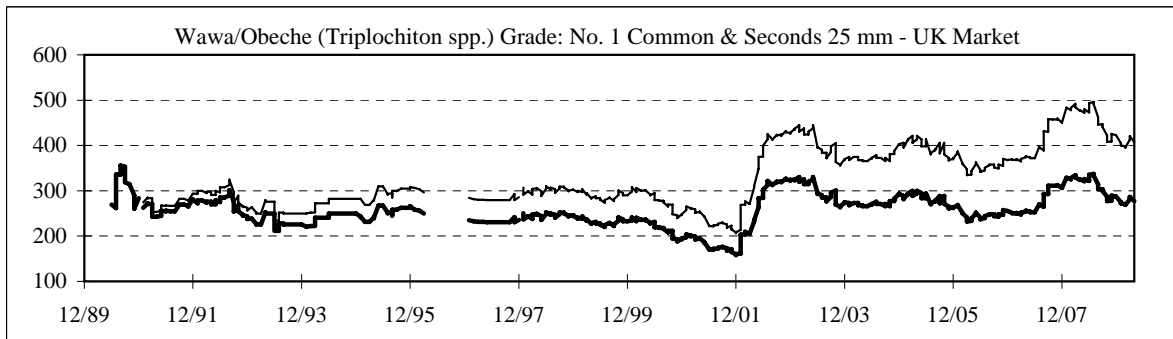
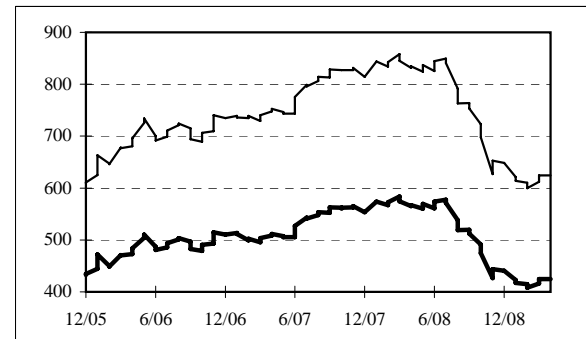
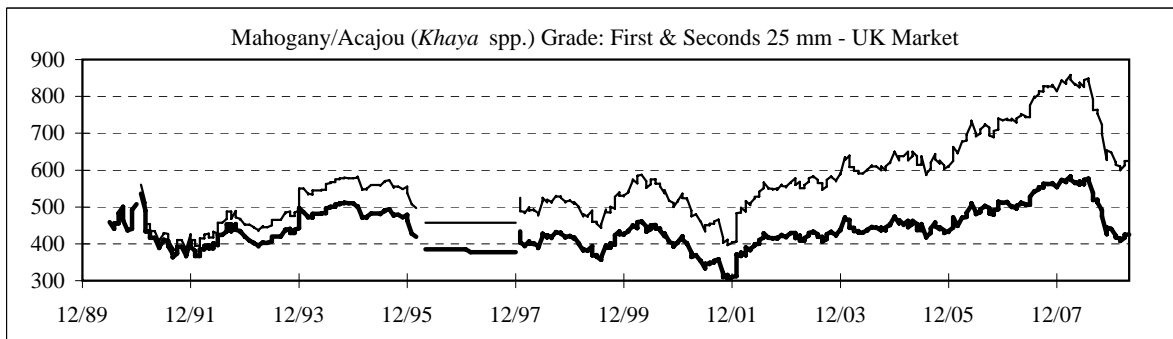
4-1-c. Price of Myanmar Teak Logs, 1997-2009

Bold lines show FOB prices for three Teak grades in constant 1990 US\$ per cubic meter (deflated by the IMF's Consumer Price Index for industrial countries). Normal lines show nominal FOB and domestic prices trends for these species, respectively.



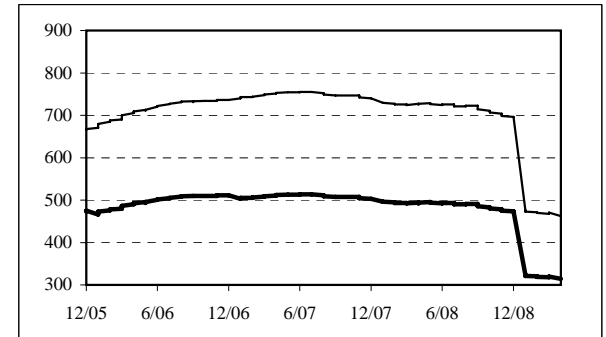
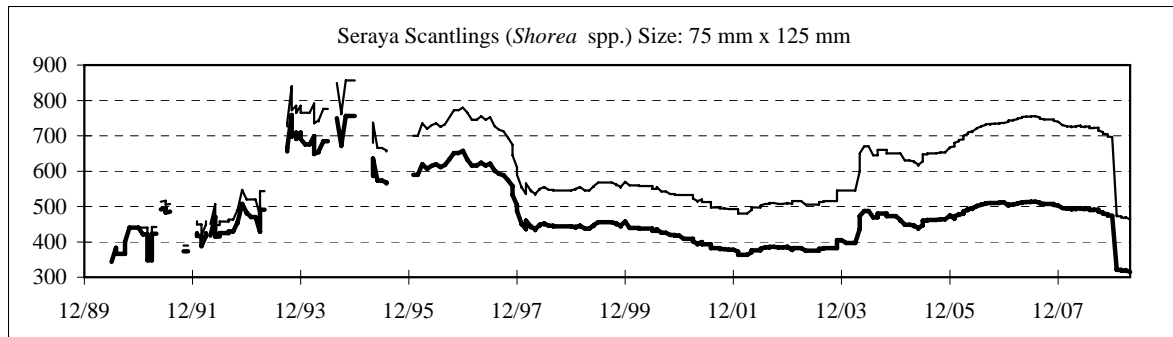
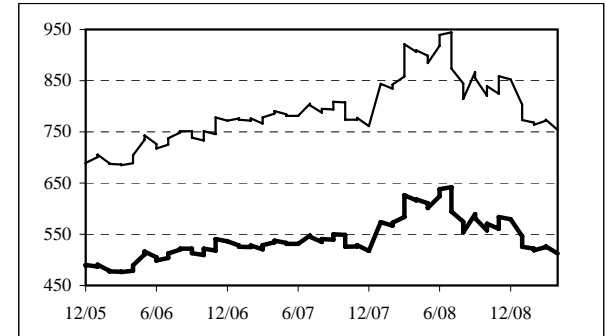
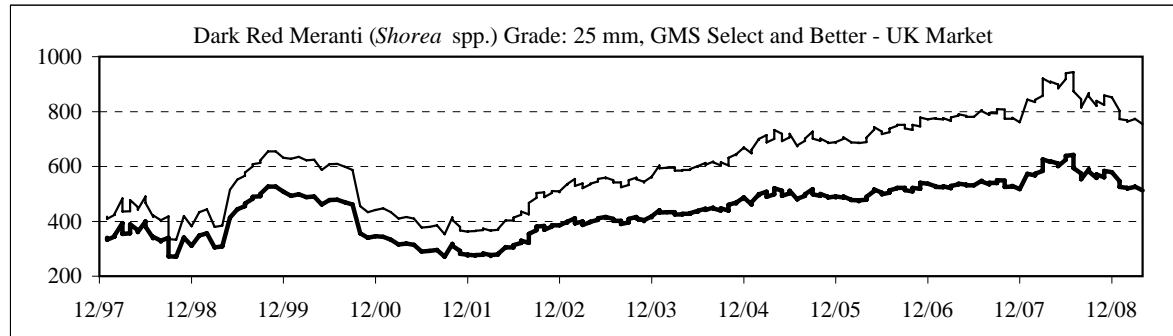
4-2-a. Price of Ghanaian Sawnwood, 1990-2009

Bold lines show FOB prices in constant 1990 US\$ per cubic meter (deflated by the IMF's Consumer Price Index for industrial countries). Normal lines show nominal FOB price trends. The price series to December 2007 has been discontinued. A new price series was initiated in January 2008 based on a wider sample size.



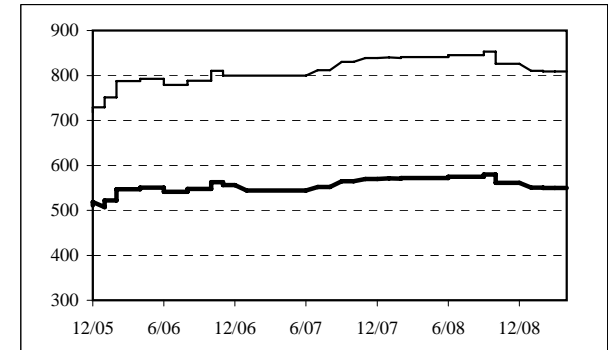
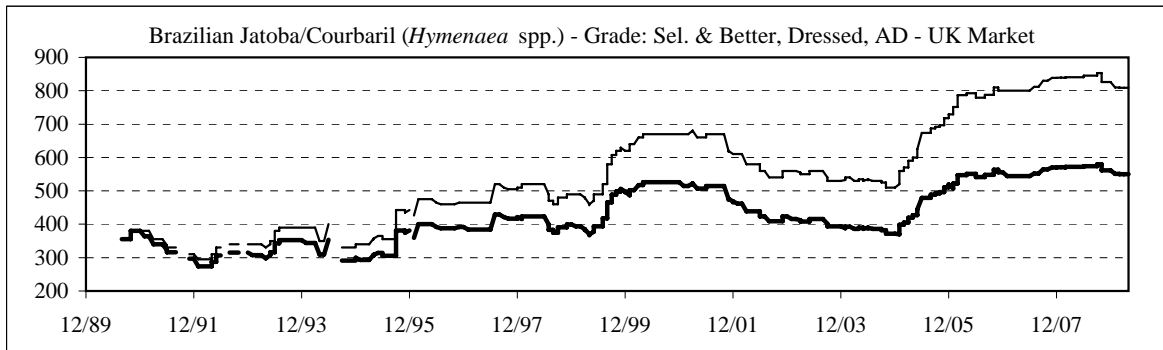
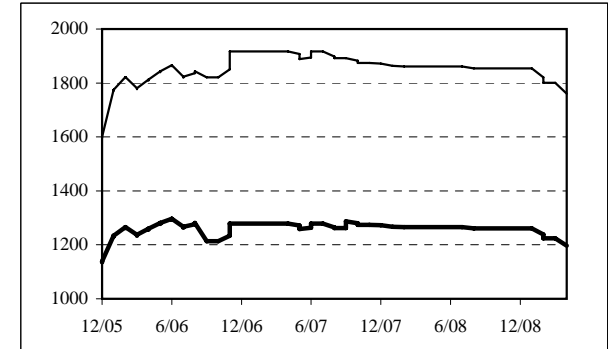
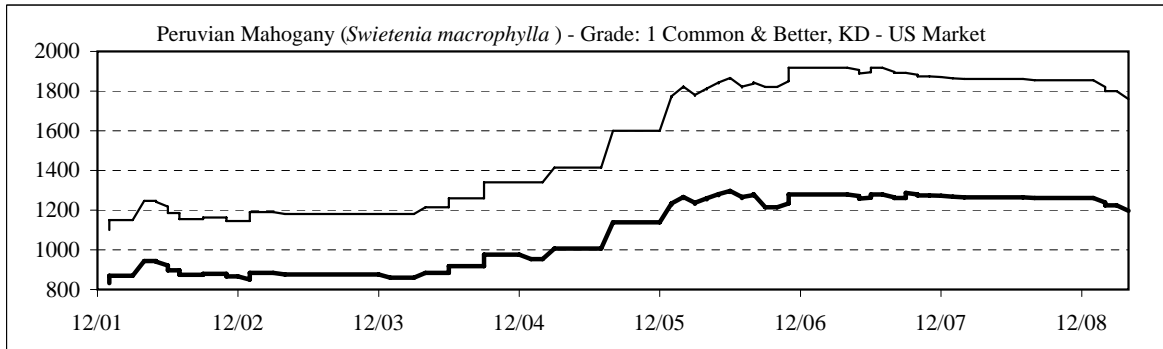
4-2-b. Price of Malaysian Sawnwood, 1990-2009

Bold lines show FOB prices in constant 1990 US\$ per cubic meter (deflated by the IMF's Consumer Price Index for industrial countries). Normal lines show nominal FOB price trends. Grades are Kiln Dried.



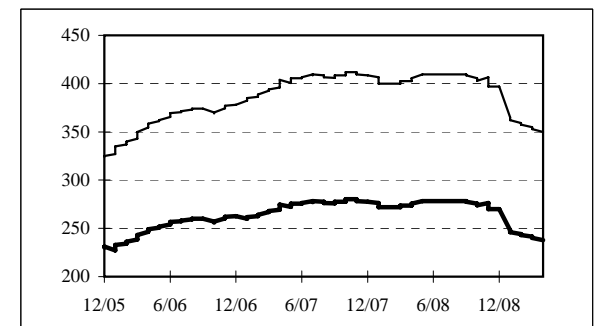
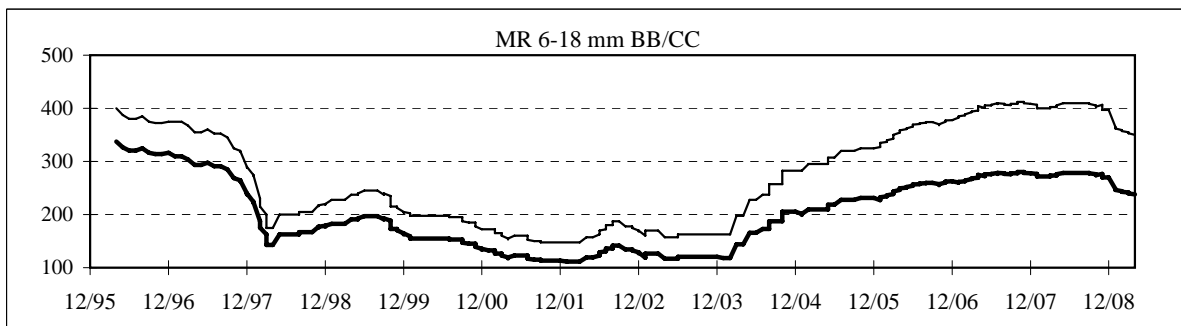
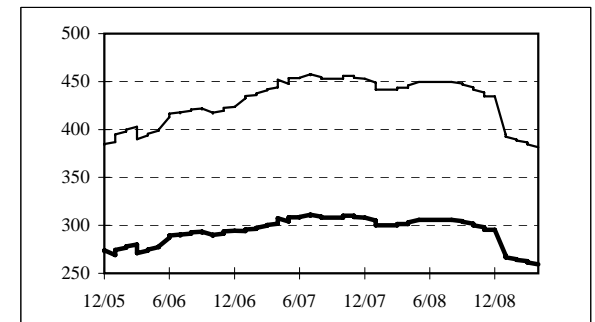
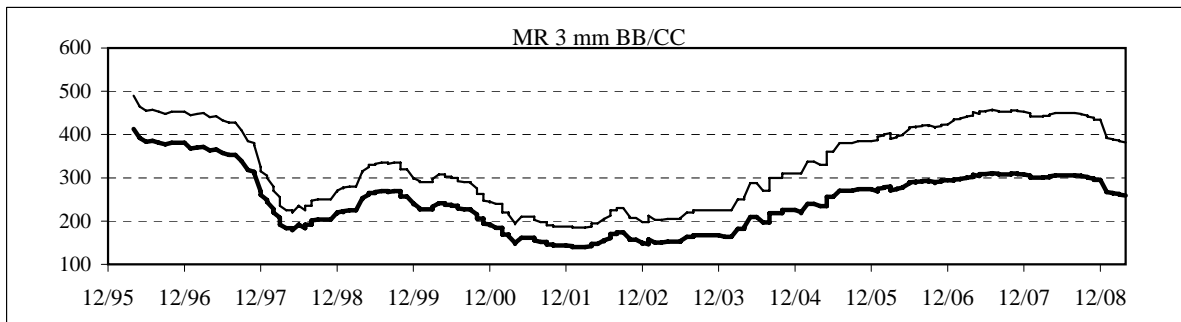
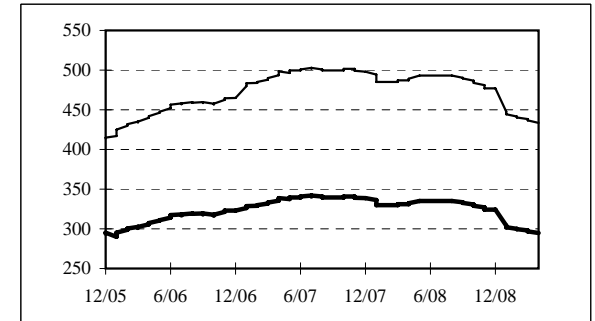
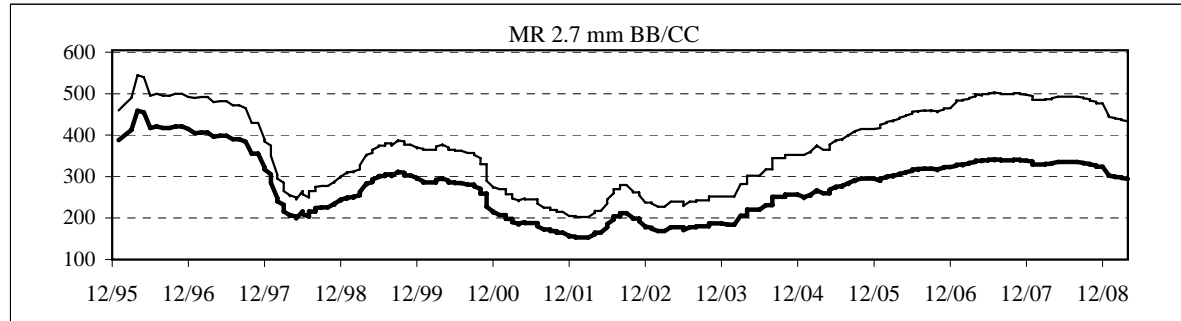
4-2-c. Price of Latin American Sawnwood, 1990-2009

Bold lines show FOB prices in constant 1990 US\$ per cubic meter (deflated by the IMF's Consumer Price Index for industrial countries). Normal lines show nominal FOB price trends.



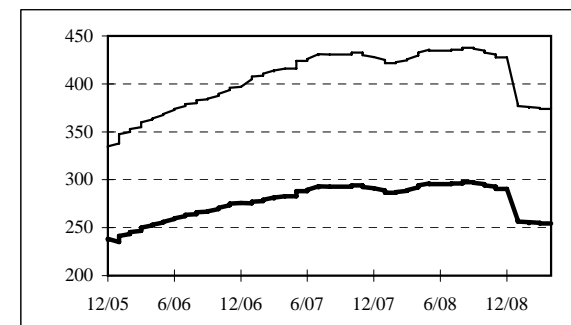
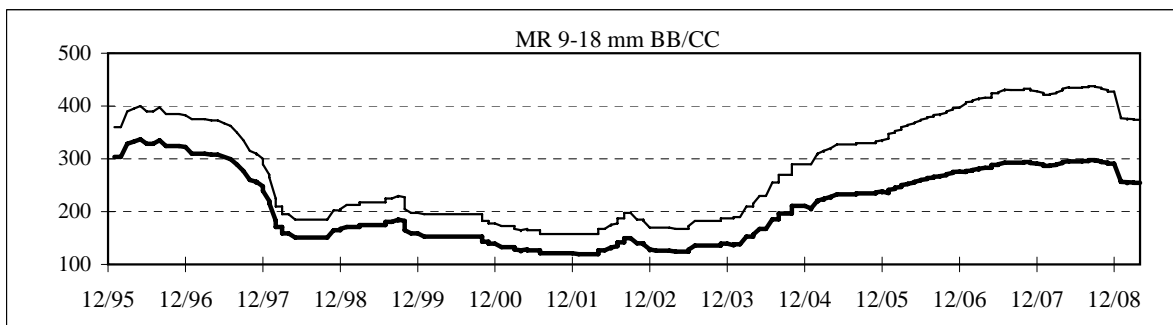
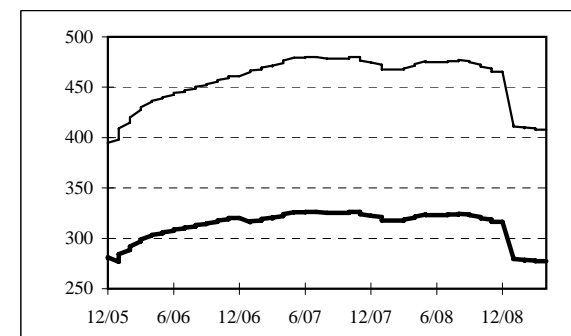
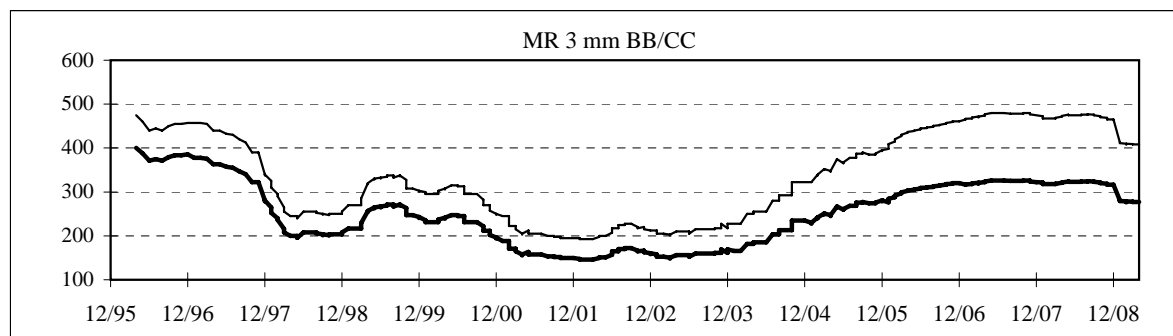
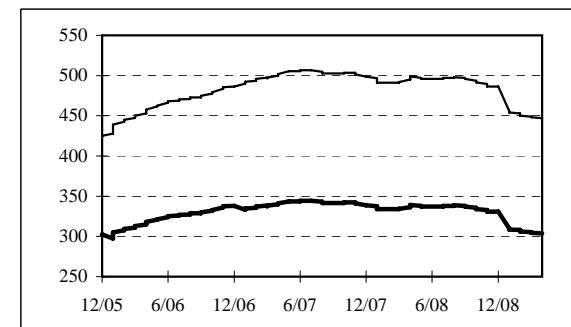
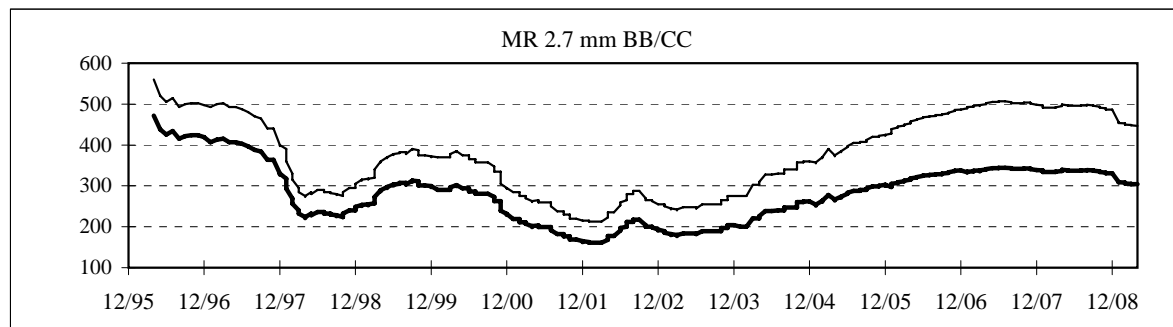
4-3-a. Price of Indonesian Plywood, 1996-2009

Bold lines show FOB prices in constant 1990 US\$ per cubic meter (deflated by the IMF's Consumer Price Index for industrial countries). Normal lines show nominal FOB price trends.



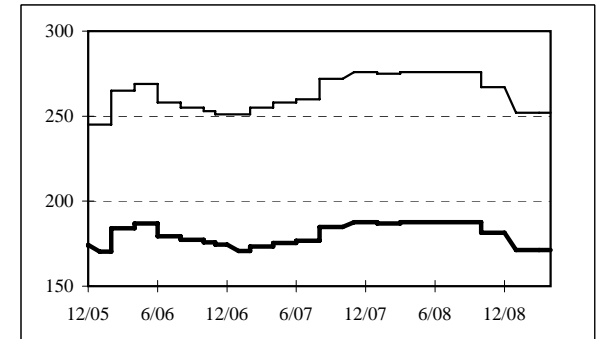
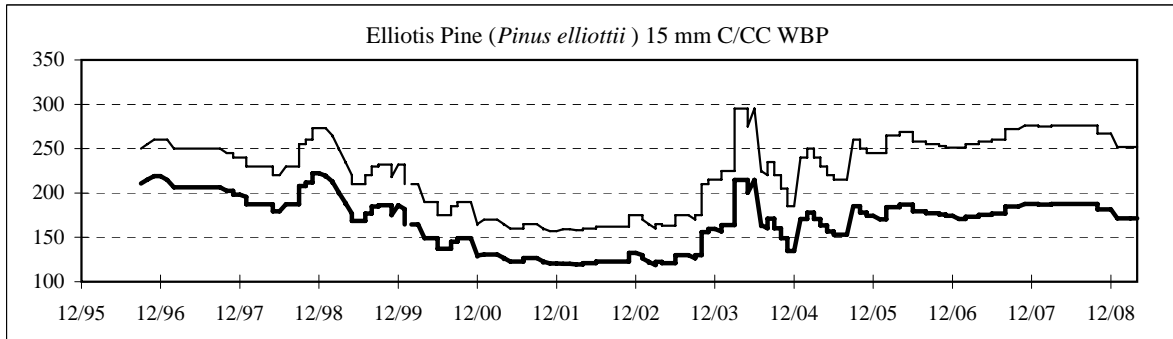
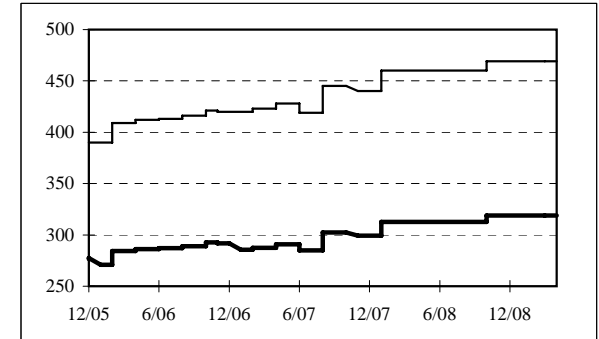
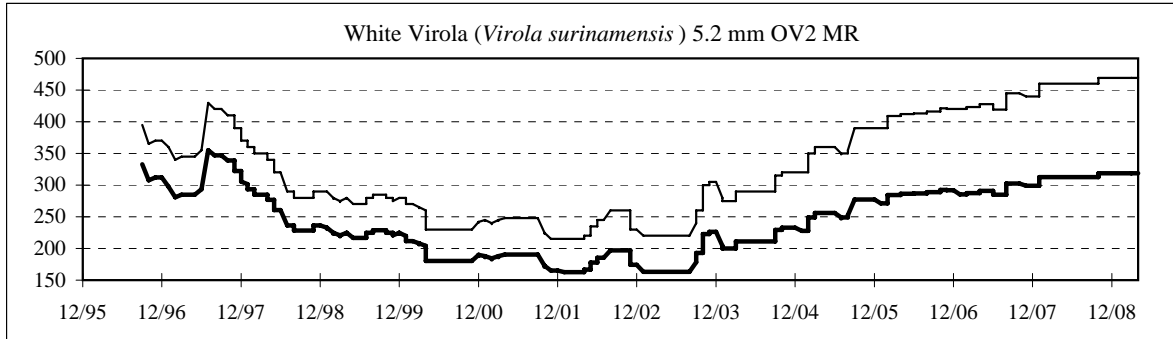
4-3-b. Price of Malaysian Plywood, 1996-2009

Bold lines show FOB prices in constant 1990 US\$ per cubic meter (deflated by the IMF's Consumer Price Index for industrial countries). Normal lines show nominal FOB price trends.



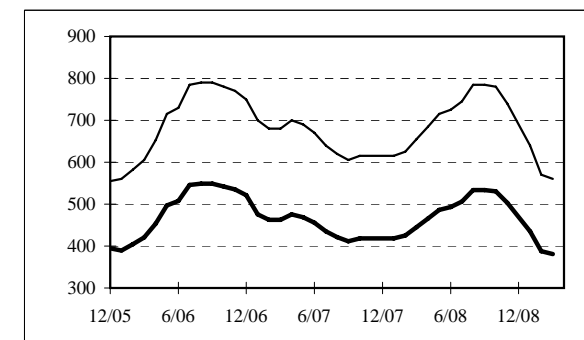
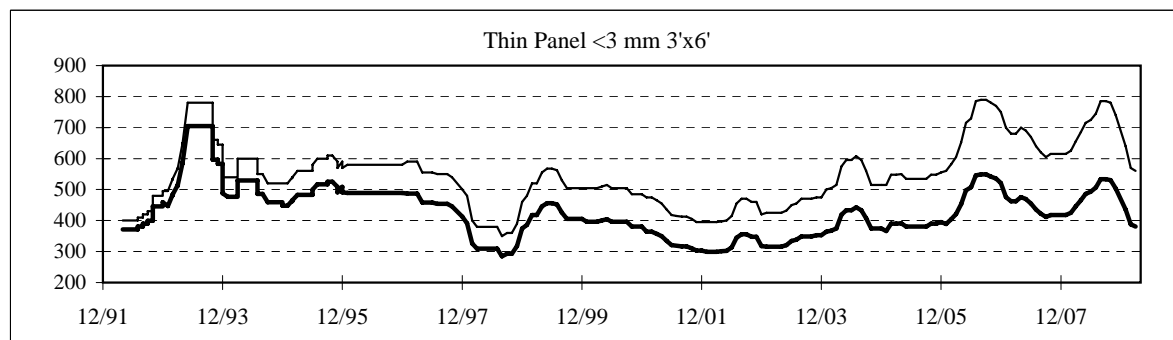
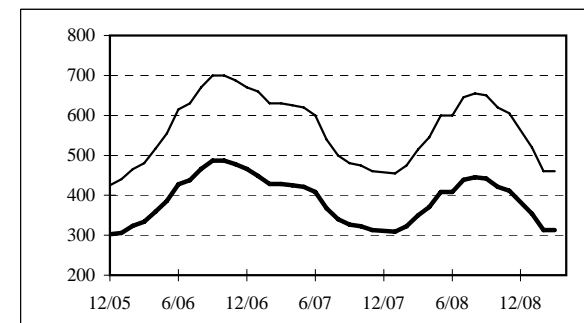
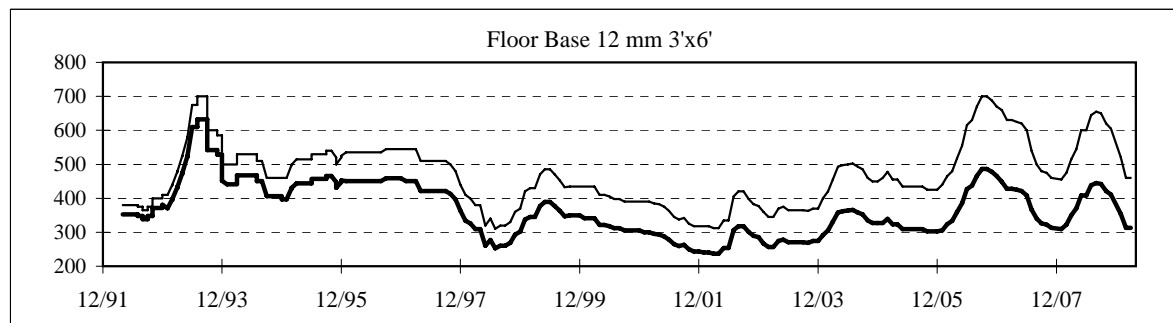
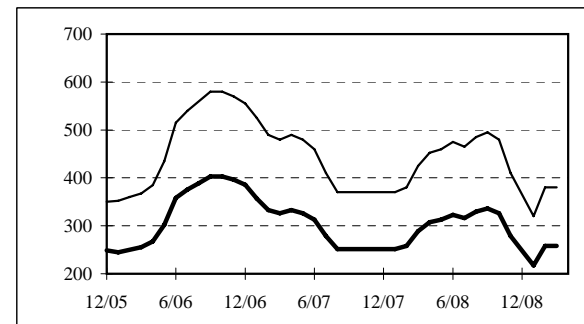
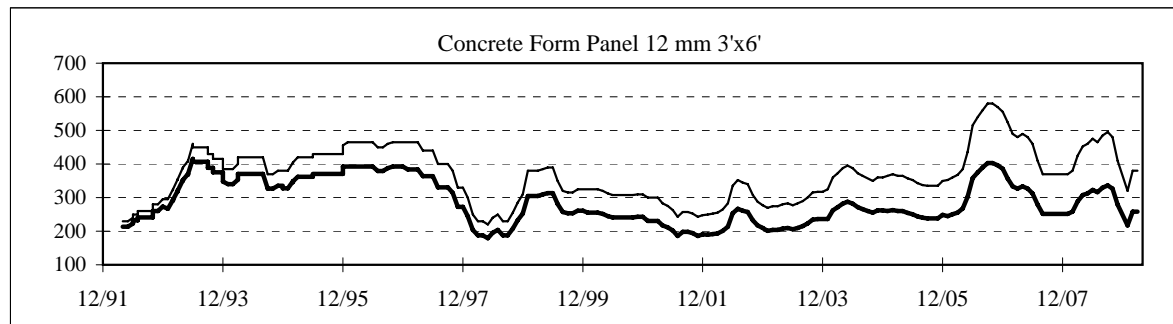
4-3-c. Price of Brazilian Plywood, 1996-2009

Bold lines show FOB prices in constant 1990 US\$ per cubic meter (deflated by the IMF's Consumer Price Index for industrial countries). Normal lines show nominal FOB price trends.



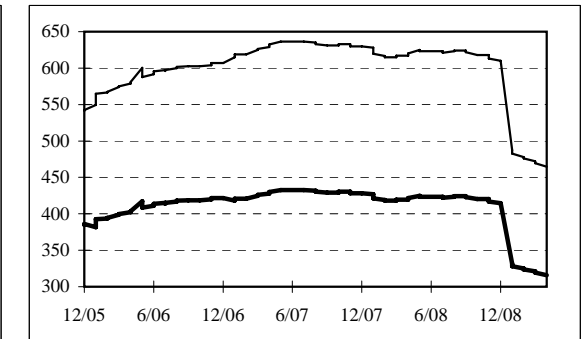
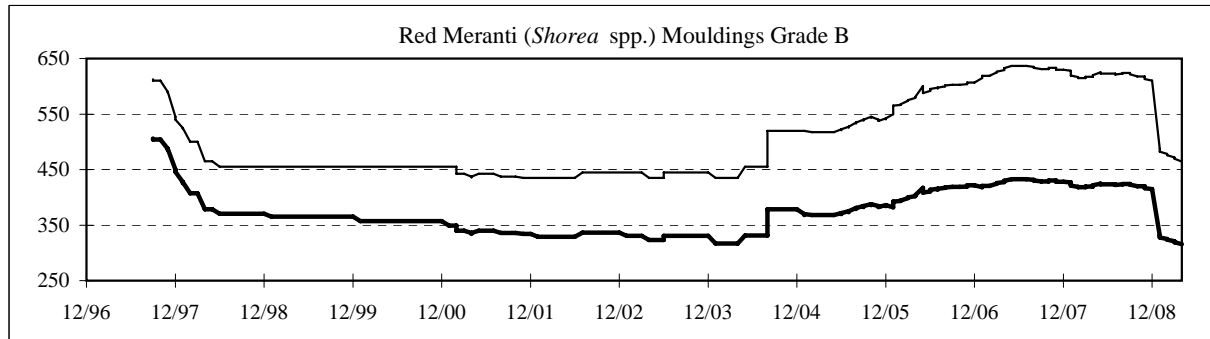
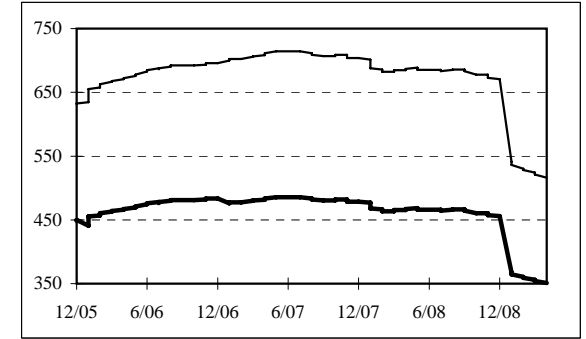
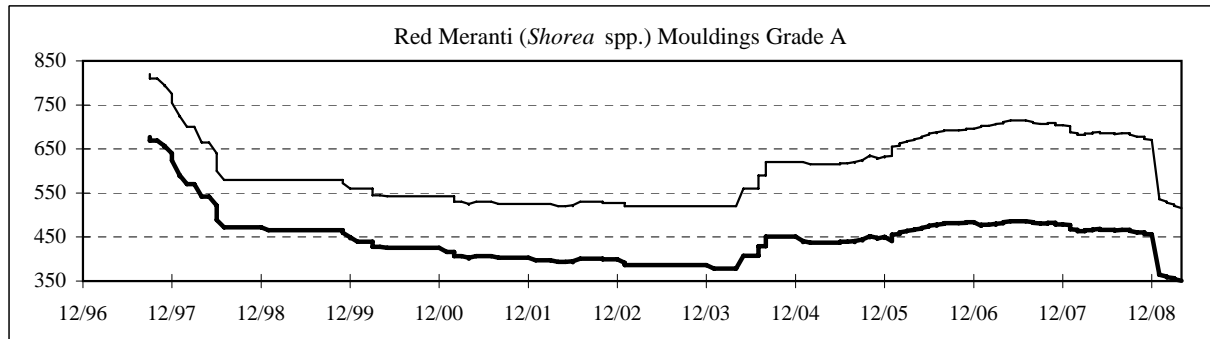
4-3-d. Price of Japanese Plywood Imports, 1992-2009

Bold lines show prices in constant 1990 US\$ per cubic meter (deflated by the IMF's Consumer Price Index for industrial countries). Normal lines show nominal price trends. All prices are C&F to Japan from Indonesia. Grades for all products are B/BB Moisture Resistant.



4-4-a. Price of Secondary Processed Sawwood Products from Indonesia, 1997-2009

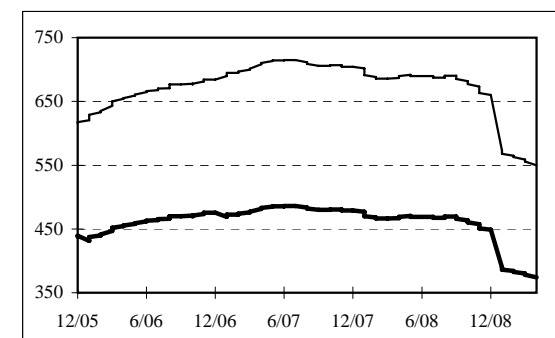
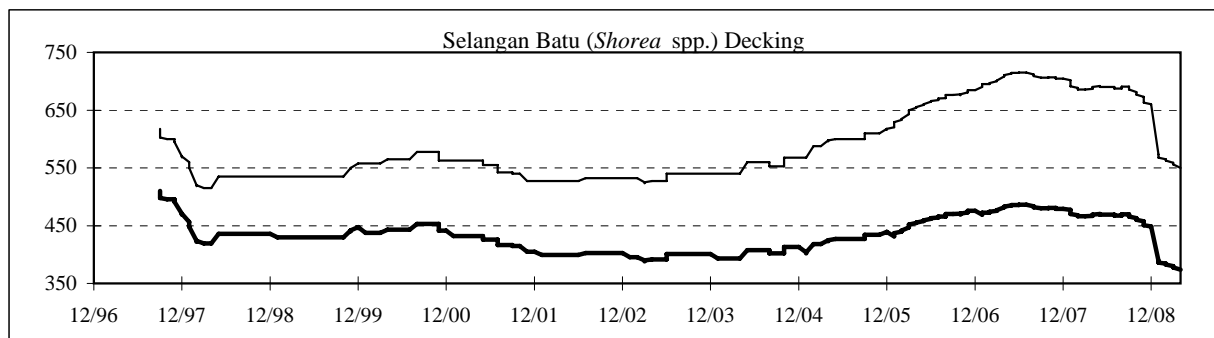
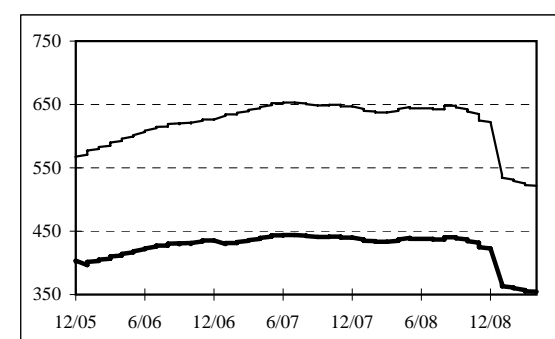
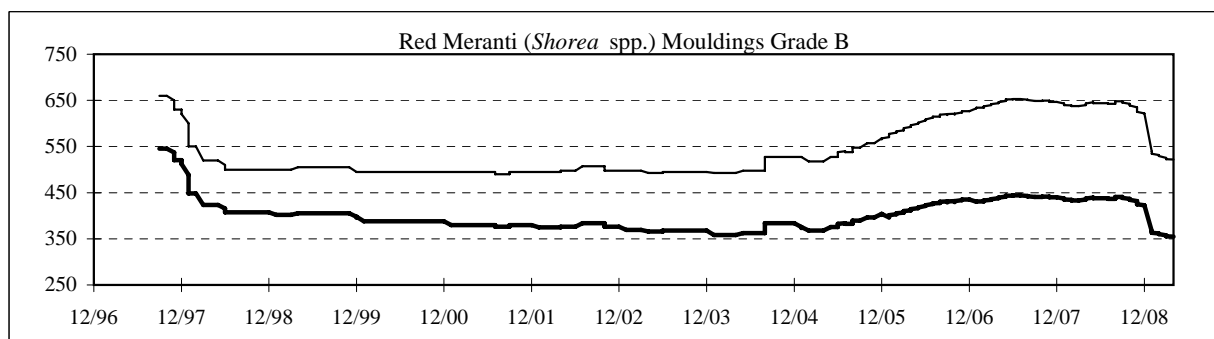
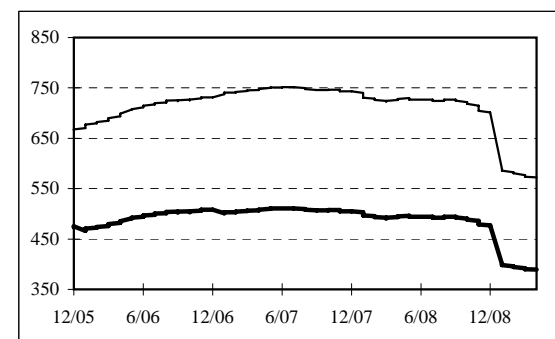
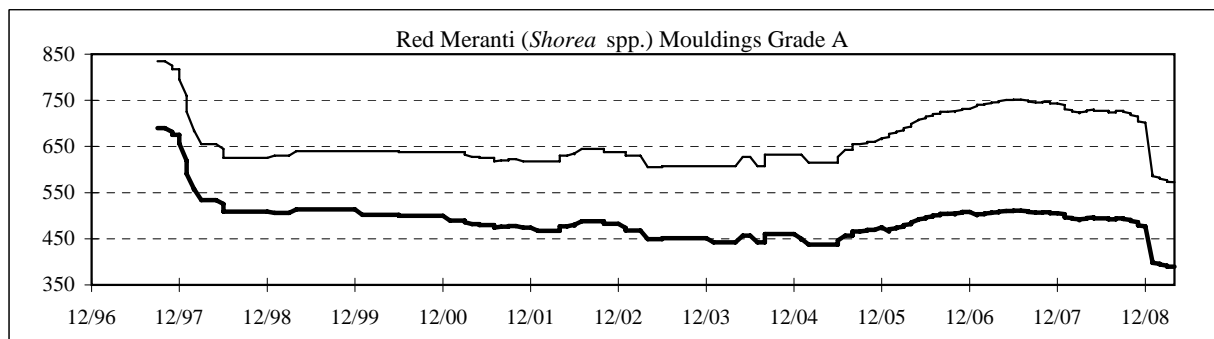
Bold lines show prices in constant 1990 US\$ per cubic meter (deflated by the IMF's Consumer Price Index for industrial countries). Normal lines show nominal price trends. All prices are FOB, Indonesia.



4-4-b. Price of Secondary Processed Sawwood Products from Malaysia, 1997-2009

Bold lines show prices in constant 1990 US\$ per cubic meter (deflated by the IMF's Consumer Price Index for industrial countries).

Normal lines show nominal price trends. All prices are FOB, Malaysia.



4-4-c. Price of Furniture and Furniture Parts from Malaysia, 1997-2009

Bold lines show prices in constant 1990 US\$ (deflated by the IMF's Consumer Price Index for industrial countries). Normal lines show nominal price trends. All prices are FOB, Malaysia.

