

Lessons for MRV system from
indigenous peoples' traditional
knowledge based mitigation
experience of forest fire
prevention in Australia

Lessons learnt

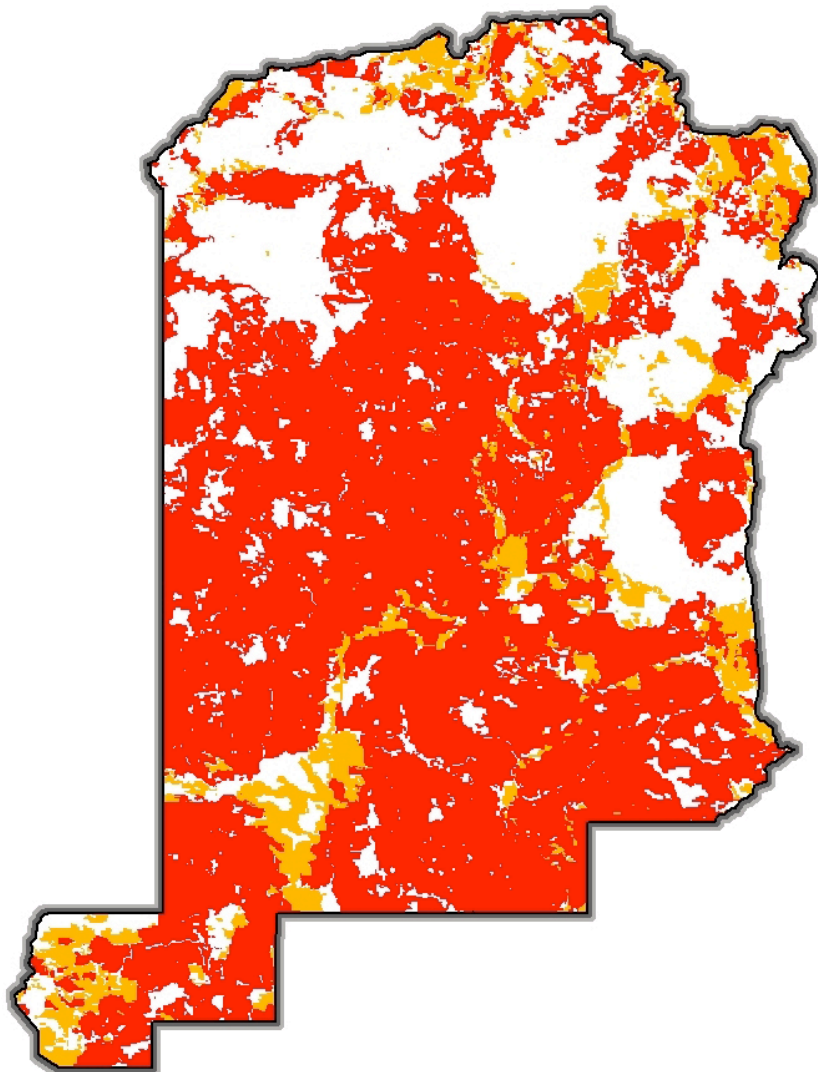
- All REDD+ planning documents place great emphasis on full and effective participation of IP in REDD+ Projects
- The scale of the REDD+ experiment, combined with the lack of relevant experience with REDD+ projects, caused considerable problems and delays
- Reviews of REDD+ projects still conclude that despite widespread recognition that local ownership is key for REDD+ success, the scope and intensity of their participation has not always been adequate and often there is lack of clarity about their role in implementation

Another market mechanism

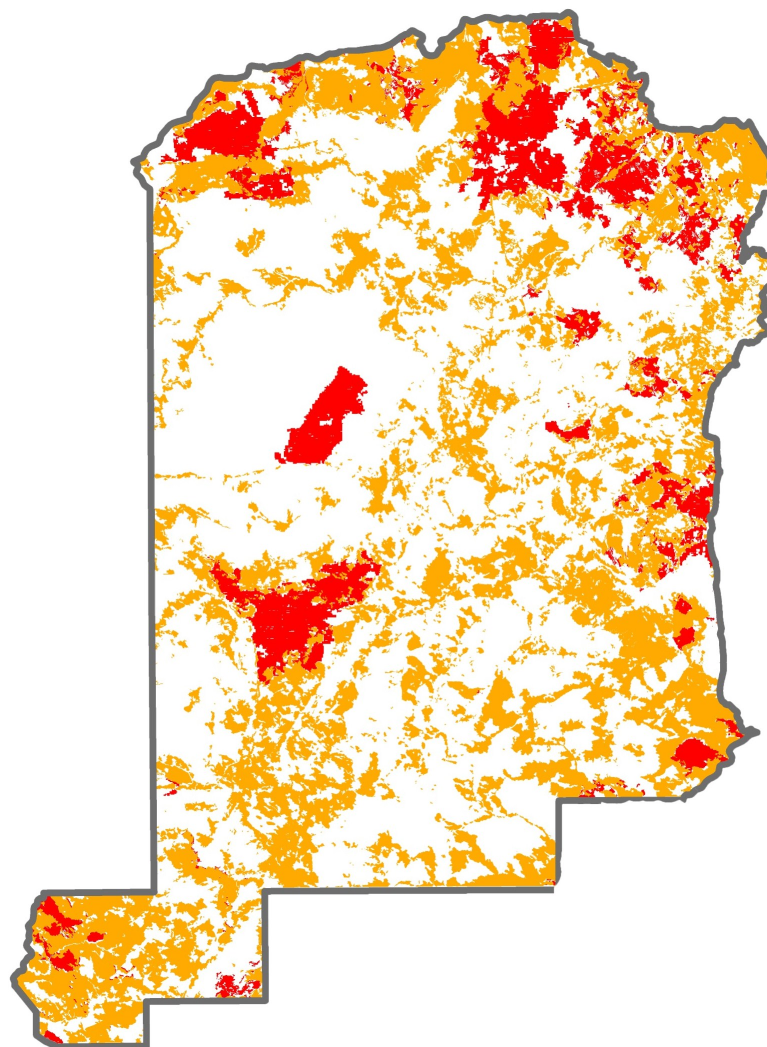
- West Arnhem Land Fire Abatement Project
- Parties
 - Darwin Liquefied Natural Gas ('DLNG')
 - Northern Territory Government
 - Northern Land Council ('NLC')
 - TOs
- NTG contract the NLC and TOs to implement the fire management strategy
- DLNG will provide about \$1 million per year for 17 years
- Monitored by scientists



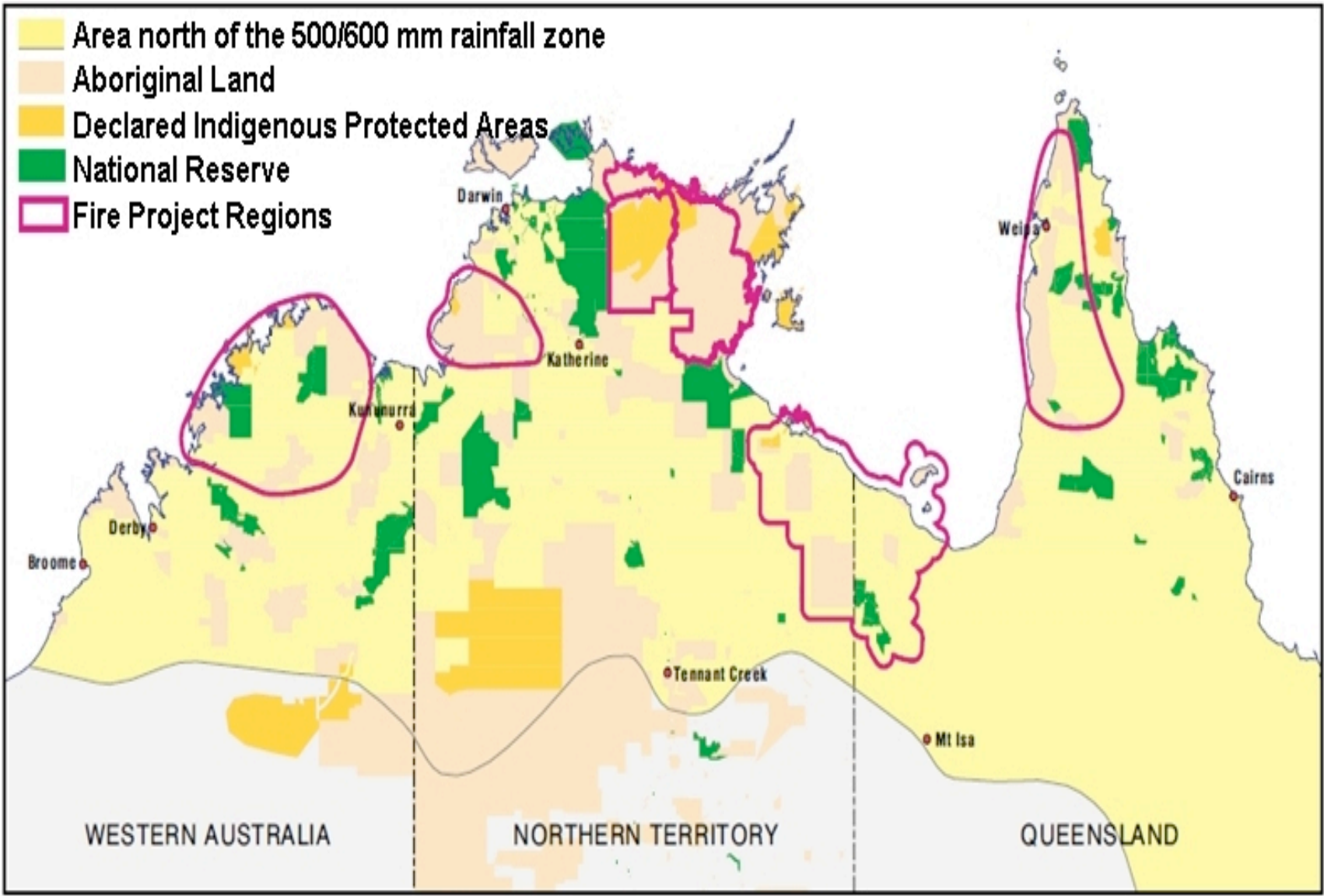
WALFA Project area 2005



WALFA Project area 2009



- Area north of the 500/600 mm rainfall zone
- Aboriginal Land
- Declared Indigenous Protected Areas
- National Reserve
- Fire Project Regions



SFM

- Detailed scientific methodology for measuring savanna burning credits recognised in the *Australian Carbon Farming Initiative*
- Further *CFI* methodologies for savanna burning within lower rainfall zones and for carbon storage (bio-sequestration) are currently in development
 - Extension of the savanna burning to lower rainfall regions
 - Develop methodology for bio-sequestration
 - Develop an agro-ecological methodology to combine better fire management and carbon incomes with pastoral production
 - Reduction of methane emissions from management of feral water buffalo
- These methodologies are expected to be broadly relevant to other savanna environments around the world

Opportunities for Indigenous Australians

- Fish River and the WALFA experience has important lessons
 - Linkages between western management methodologies and TK
 - Methodologies developed to the highest scientific standards
 - Social, cultural and governance benefits