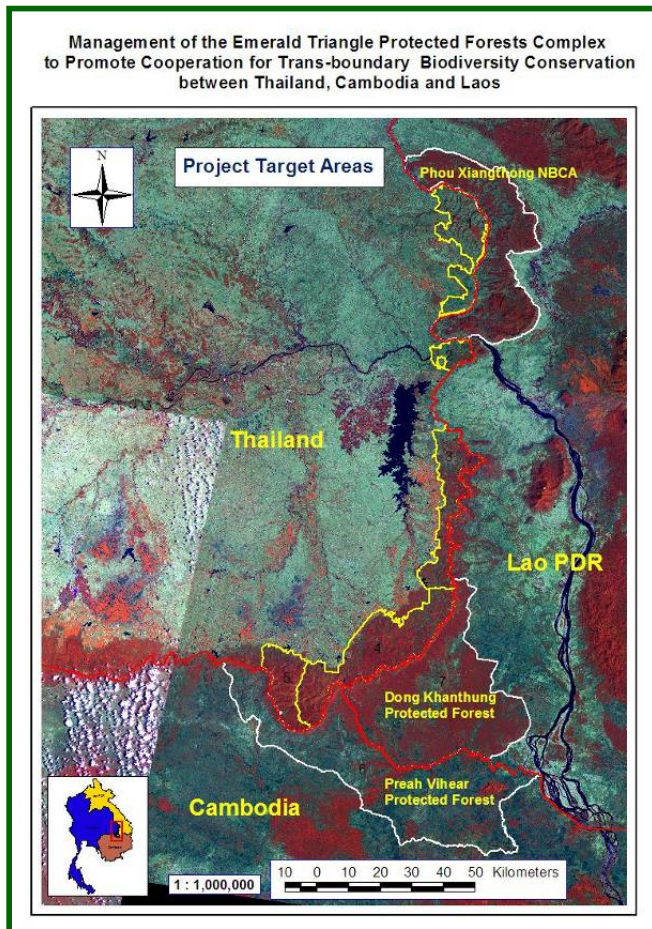


“THE EMERALD TRIANGLE TRANS-BOUNDARY BIODIVERSITY CONSERVATION PROJECT”

The Emerald Triangle Protected Forest Complex, which traverses the borders of Thailand, Cambodia and Laos, represents one of the most important biodiversity conservation landscapes in Southeast Asia, particularly in the Greater Mekong sub-region.



The first phase of the ‘Emerald Triangle Trans-boundary Biodiversity Conservation Project’ was implemented, with support from the International Tropical Timber Organization (ITTO), from October 2001 to December 2004. Its objectives were to initiate a management planning process in a framework of trans-boundary cooperation for biodiversity conservation and to promote cooperation between Thailand, Cambodia and Lao PDR.

The second phase, in which Cambodia established a project component, was implemented from March 2008 to June 2010. Its objectives were to strengthen cooperation between the three countries, enhance protection measures and the monitoring of the biological resources of shared trans-boundary areas, and strengthen the involvement of local communities and stakeholders to ensure sustainable uses and management of natural resources.

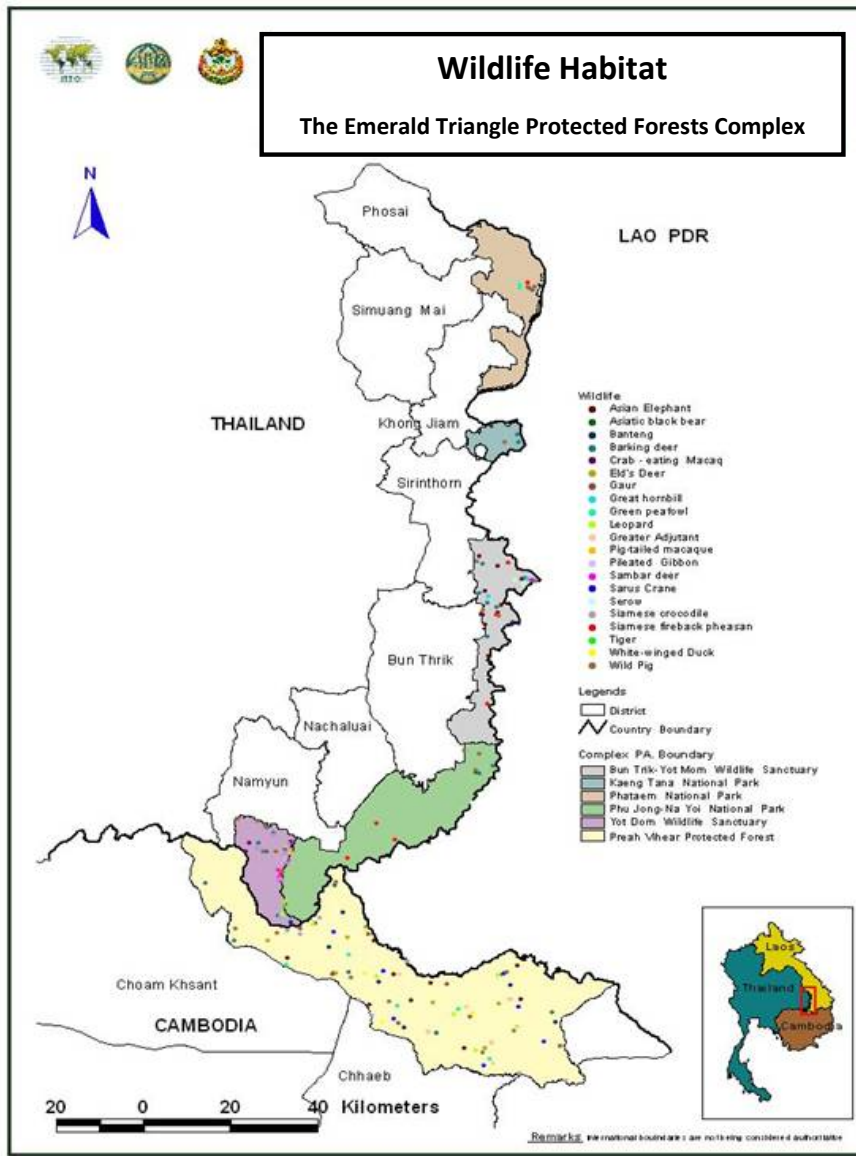


Implementation strategies in the third phase of the project, which are planned to occur between August/September 2012 to August/September 2015, are directed to the harmonization between Thailand, Cambodia and Lao PDR of guidelines for management planning and the implementation of several joint ecological monitoring activities. Within that broad framework, planned research on wide-ranging wildlife species will continue in Thailand and Cambodia and be extended to Lao PDR.

The sharing of information will be institutionalized between the three countries, as well, as a basis for formulating sustainable management strategies to conserve forest resources, improve carbon sequestration and carbon stocks, and protect wildlife populations and reduce barriers to migratory wildlife movements along the tri-national borders, which will contribute collectively to the forest-related Aichi Targets developed at the Convention on Biological Diversity 2020.

The implementation of the third phase of the project, moreover, will not only strengthen regional cooperation and enhance monitoring and conservation interventions, but will also mobilize support and strengthen the collective political will to maintain the common natural heritage of the three countries participating in the project. It will also promote understanding and peace in the region and improve

rural community livelihoods and economic prosperity on all sides of the Emerald Triangle Protected Forests Complex.



Project ID: PD577/10 Rev.1 (F)
 Executing Agency: Forestry Administration (Cambodia), and Royal Forest Department (Thailand)
 Authors: Chheang Dany, Kamol Wisupakan, and Hwan Ok Ma
 e-mail: wpo@online.com.kh, kamolw88@gmail.com, ma@itto.int