



Biodiversity, Climate Change and Tropical Forests

Hwan Ok Ma
Reforestation and Forest Management Division
ITTO

ITTO 25th Anniversary Symposium
Yokohama, 28 October 2011

Sustainable Forest Management (SFM)

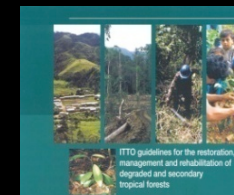
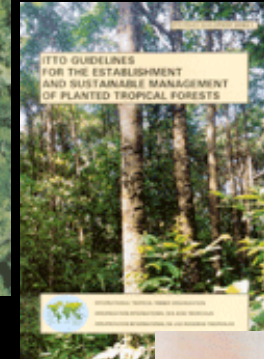
- Sustainable Forest Management (SFM) developed into an essential tool as sustainability become a global priority
- **In 1992, ITTO definition of SFM**

“the process of managing forest to achieve clearly specified objectives of management, with regard to the production of a **continuous flow of desired forest products and services**, ..., **without undue undesirable effects on the physical and social environment**”.
- **In 2007, United Nations definition of SFM**

“a dynamic and evolving concept, [that] aims to maintain and enhance the **economic, social and environmental values** of all types of forests, for the benefit of present and future generations”.

ITTO guidelines for SFM

- **Sustainable management of natural tropical forests**
- Establishment and sustainable management of planted tropical forests
- **Fire management in tropical forests**
- C&I for sustainable management of natural tropical forests
- **Restoration, Management and Rehabilitation of Degraded and Secondary Forests**
- ITTO/IUCN guidelines for the conservation and sustainable use of biodiversity in tropical timber production forests

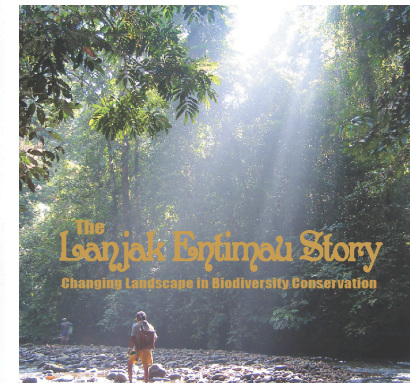
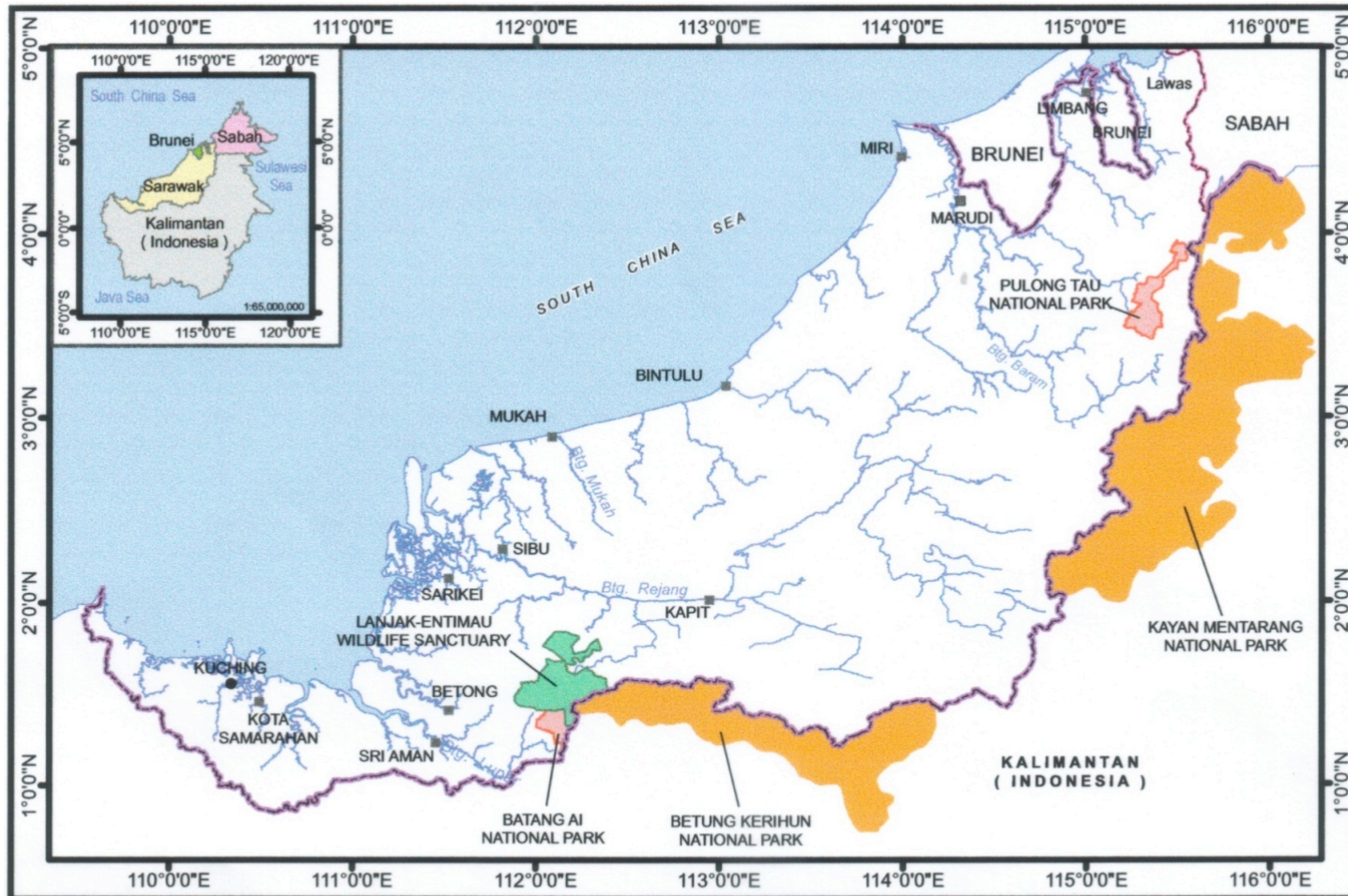


ITTO Transboundary Conservation Areas

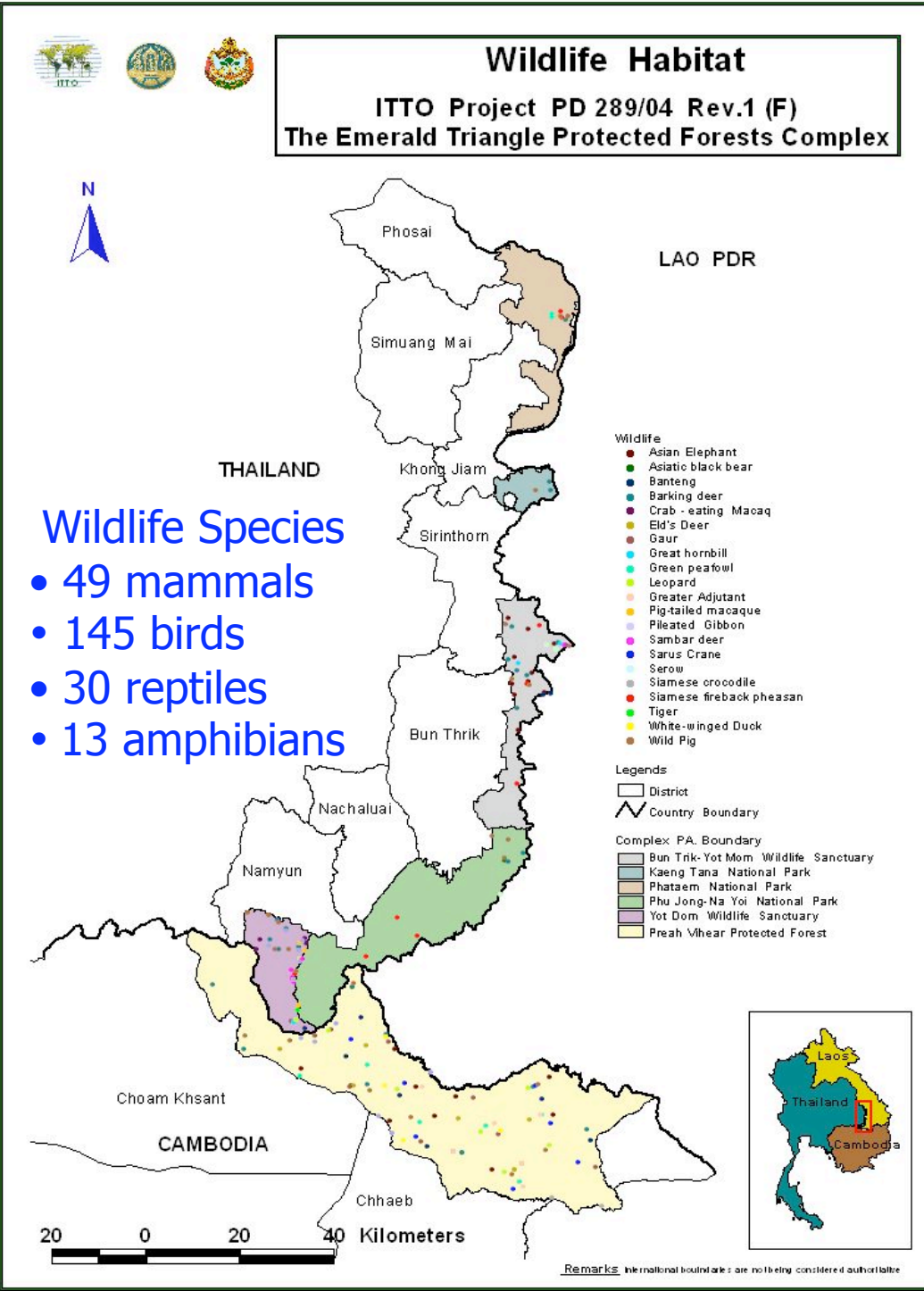
Case	Location	Area of Influence
1	Borneo - Malaysia and Indonesia	2.4 mil ha
2	Emerald Triangle Complex – Thailand, Cambodia and Laos	0.36 mil ha
3	Kabo-Ndoki Region - Congo	1.3 mil ha
4	Mengamé-Minkébé Gorilla Sanctuary - Cameroon & Gabon	0.13 mil ha
5	Cordillera del Condor – Ecuador & Peru	2.4 mil ha
6	Tambopata-Madidi Protected Area – Peru & Bolivia	4.2 mil ha
	Total	11 mil ha

CASE 1 TBCA

Transboundary Biodiversity Conservation Areas between Sarawak, Malaysia and Kalimantan, Indonesia



CASE 2 TBCA



Livelihood Development Activities in Cambodia



Schools and facilities



Cow Bank



Fruit Tree Seedlings



Chicken Raising



Pumping well



CASE 4
TBCA

Mengamé-Minkébé Tranboundary Gorilla
at the Cameroon-Gabon Border



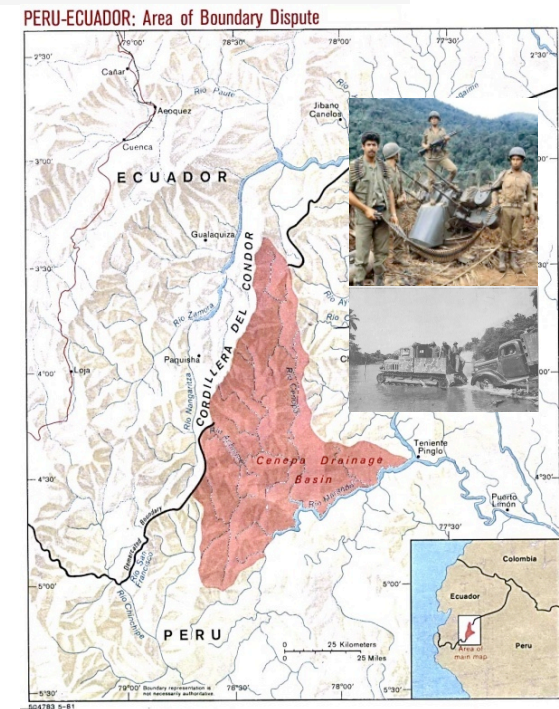
CASE 5
TBCA

Conservation and Peace in the Condor Range Region, Ecuador-Peru



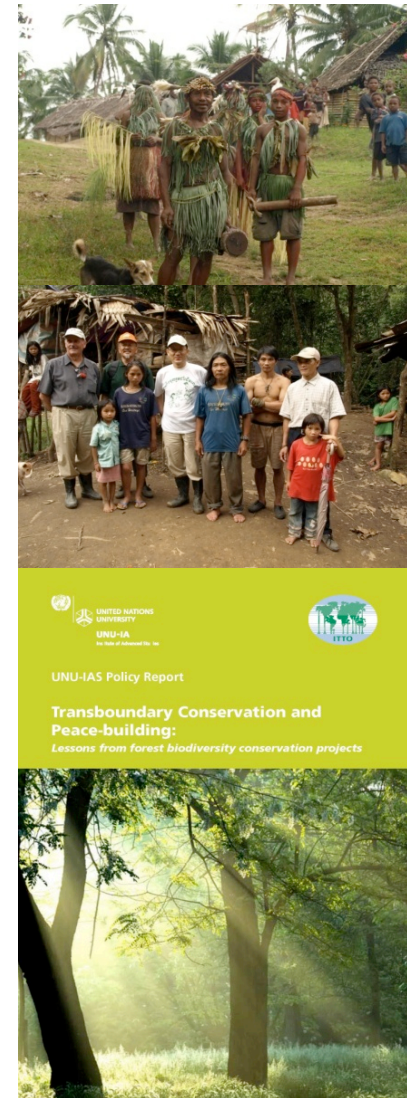
PERÚ - ECUADOR

PAZ Y CONSERVACIÓN BINACIONAL EN LA CORDILLERA DEL CÓNDOR
ECUADOR - PERÚ
Fase II



Lessons from Transboundary Conservation

- ❑ **Challenges:** Transboundary cooperation, lack of infrastructure, weak capacity
- ❑ **Management issues:** Community dependence on forests, illegal logging, collecting and trade of protected species,
- ❑ **Local livelihoods** are important and successful community-based activities requires effective leadership and cooperation
- ❑ Tackle conservation threats through **stakeholders cooperation** and awareness education



Climate Change

ITTO Thematic Programme on REDDES

Reducing Deforestation and Forest Degradation and
Enhancing Environmental Services (**REDDES**)

Specific objective

To strengthen the capacity of ITTO developing
member countries and stakeholders to REDDES

Budget

- Planned investment (3 yrs): USD18,000,000
- Total Pledges: USD 9,000,000
- Allocation up to 2011: USD 8,200,000

Donors: Norway, Japan, USA, Switzerland

ITTO REDDES Projects 2009 Cycle

Latin America (4)

1. Monitoring Pan-Amazonian forest (Brazil)
2. Social processes for SFM (Guatemala)
3. Resources assessment & monitoring (Guyana)
4. Communities and PES (Peru)

Africa (2)

5. Carbon stock inventory (Dem Rep Congo)
6. Collaborative management for REDD (Ghana)

Asia (3)

7. PES in degraded/secondary forests (China)
8. SFM to enhance carbon stocks (Indonesia)
9. REDD in south Sumatra peatland (Indonesia)

Secretariat (1)

10. Voluntary carbon marketing scheme (ITTO)



ITTO REDDES Projects 2011 Cycle

Latin America (5)

1. Developing REDD+ES in Brazilian Atlantic Rain Forest (**Brazil**)
2. Ecosystem services provided by coastal forests in Veracruz (**Mexico**)
3. Environmental services from managed forests in Ucayali (**Peru**)
4. Sustainable livelihoods and environmental mortgages in Chocó (**Ecuador**)
5. Forest Governance and REDD+ (**Honduras & Guatemala**)

Africa (3)

6. Restoration of residual forests and arid lands in Akpé & Akama valleys (**Togo**)
7. Rehabilitation of degraded forest areas in Bamboutos Mountain (**Cameroon**)
8. REDD mechanisms in sustainable forest management in (**Cameroon**)

Asia (4)

9. Rehabilitation of Mangrove Ecosystem in Bintan Island (**Indonesia**)
10. Reducing forest degradation in peninsular Malaysia (**Malaysia**)
11. Capacity building for developing REDD+ activities (**Myanmar**)
12. Estimates of carbon stocks in forests and trees outside forest (**Thailand**)

ITTO Secretariat (2)

13. Strengthening REDDES capacity of ITTO producer countries in Africa
14. Quantifying the REDD+ effect of ITTO projects

Public-Private Partnership



REDD+ Demonstration Project in Meru Betiri National Park, Indonesia

- **Executing Agency:** FORDA, Min of Forestry
- Funded by Seven & i Holdings (Japan)



**ITTO
Facilitation
to REDD+
Feasibility
Study**

**Bilateral Offset
Mechanism
of Japan**

- Ministry of Economy, Trade and Industry
- Ministry of Environment



Place	Acre Brazilian Amazon Brazil	Central Kalimantan Indonesia
Size	800,000 ha	200,000 ha

Looking Forward

In its first 25 years, ITTO developed the means and instruments to support member countries to put policies into practice:

Guidelines

Thematic Programmes

Project Support, Capacity building activities

Knowledge base and information sharing

Partnerships

Let's work together in the next 25 years to promote SFM in all tropical forests