

ITTO-CITES Programme for Implementing CITES Listings of Tropical Tree Species



INTERNATIONAL MEETING ON SUSTAINABLE FOREST MANAGEMENT IN CITES
HARRIS HOTEL SUNSET ROAD BALI INDONESIA, 8 - 10 JANUARY 2013



In 2006, the Secretariats of the International Tropical Timber Organization (ITTO) and of the Convention on International Trade in Endangered Species of Wild Fauna and Flora (CITES) entered into a partnership to ensure that the international trade in CITES-listed tropical tree species is consistent with their sustainable management and conservation.



CITES has over 40 years of experience in ensuring that international trade in species of wild flora and fauna listed in its appendices does not threaten their survival. Its objective is to regulate the international trade in CITES-listed species to ensure it is sustainable, legal and traceable.

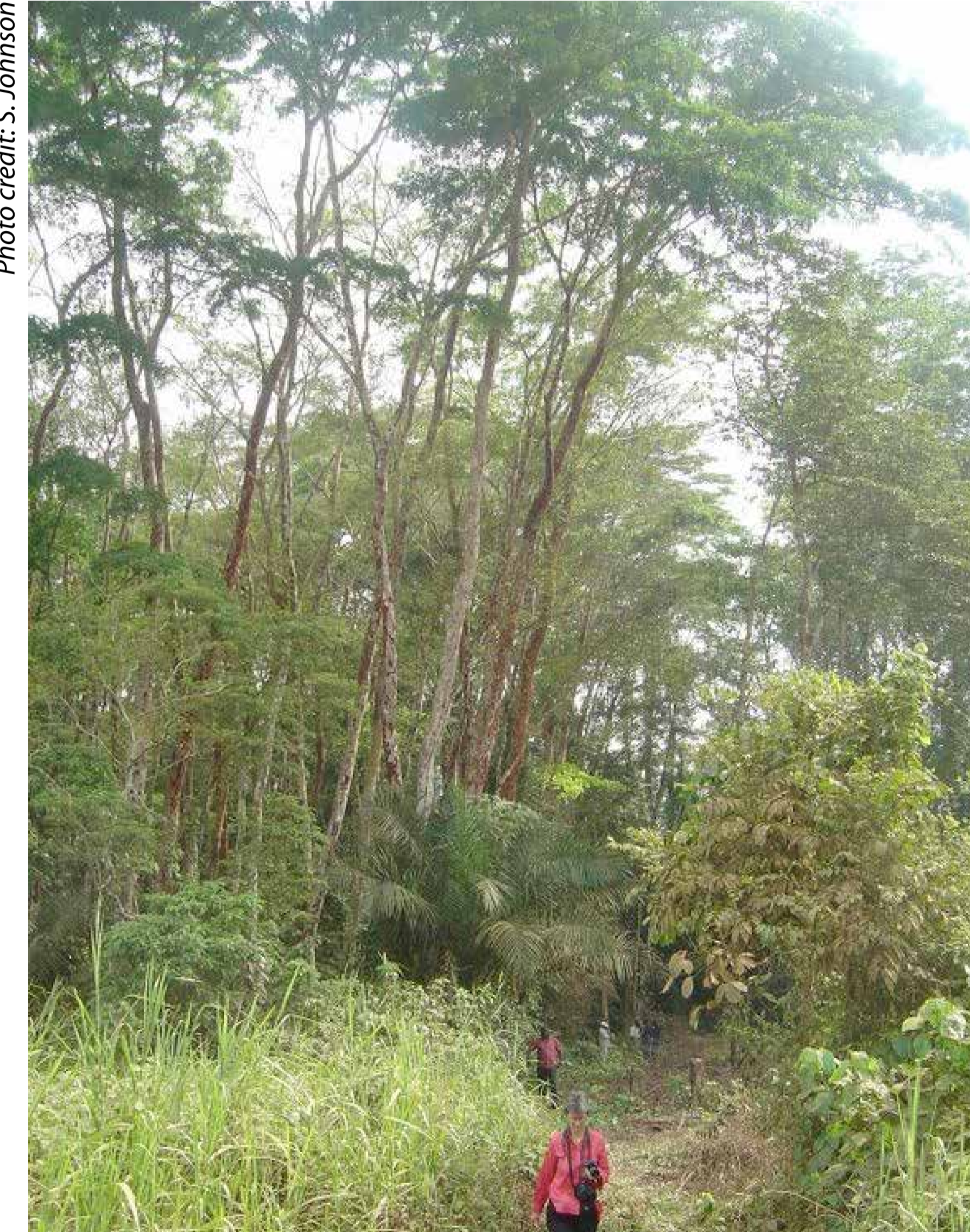


ITTO has over a quarter-century of experience in promoting the conservation and sustainable management, use and trade of tropical forest resources. Its members represent a majority of the world's tropical forests and around 90% of the global tropical timber trade.

The goal of the partnership is to assist national authorities to meet the scientific, administrative and legal requirements for managing and regulating trade in CITES-listed tropical tree species, including:



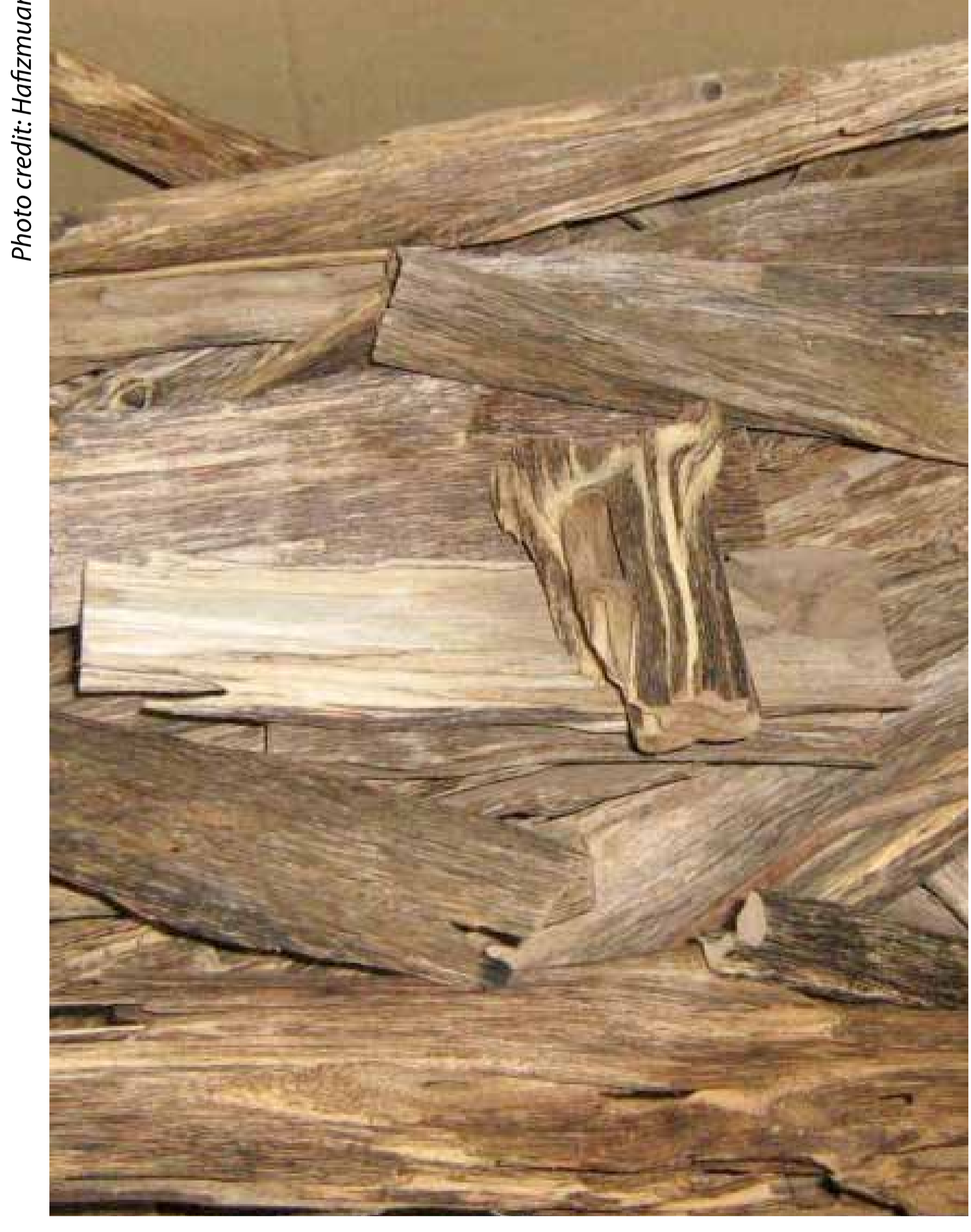
Prunus africana (African cherry) in Africa



Pericopsis elata (afromosia) in Africa



Swietenia macrophylla (mahogany) in Latin America



Aquilaria spp. and *Gyrinops* spp. (agarwood producing taxa) in Asia



Gonystylus spp. (ramin) in Asia



Dalbergia stevensonii (rosewood) in Latin America

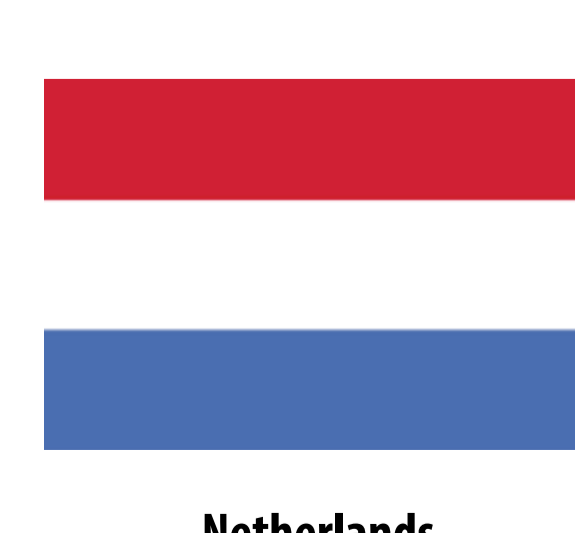
ITTO and CITES are implementing a multi-year collaborative project to provide assistance to countries in the tropics to develop forest management plans, design forest inventories, provide guidelines and case studies for making non-detriment findings for CITES listed tree species and develop and disseminate tools for timber tracking and identification. The Programme coverage will evolve with the status and inclusion of tropical tree species in the CITES appendices.



European Union



Germany



Netherlands



Norway



United States of America