

INTERNATIONAL TROPICAL TIMBER ORGANIZATION (ITTO)

THEMATIC PROGRAMME ON FOREST LAW ENFORCEMENT GOVERNANCE AND TRADE

PROJECT DOCUMENT

TITLE:	STRENGTHENING THE CAPACITY OF LOCAL INSTITUTIONS TO SUSTAINABLY MANAGE COMMUNITY FORESTRY IN SANGGAU FOR IMPROVING LIVELIHOOD
SERIAL NUMBER:	TFL-PD 032/13 Rev.2 (M)
SUBMITTED BY:	GOVERNMENT OF INDONESIA
ORIGINAL LANGUAGE:	ENGLISH

SUMMARY:

Institutional strengthening of Community Forestry is a program dedicated to empower community who are living in surrounding forest areas. The scheme of community forestry empowerment is an important activities to be carried out in order to strengthen community institutions. Up to recently at year 2013, three units of Community Forestry attained permits or licences from the District Leader in Sanggau. The permits socalled IUPHKm allow communities to utilize state forest areas under the production forest function that covers 3,790 hectares, with condition of applying sustainable forest management principles. That program is slow in progress as up to now only 5% of the total targetted areas being met. As the HKm rights intend for improving communities wealth as well as for maintaining sustainability of forests, the slow progress of HKm is feared will hinder promotion of HKm development program in Indonesia.

This project of strengthening local institutions is proposed to facilitate the empowerment of local communities in the context of a sustainable community forestry management in Sanggau. The expected outputs of the project are : 1) **Increased local community's institutions** 2) available **access to economic resources**; and 3) **Improved support from local government on community forestry development.**

At the end of the project, it is expected **the economic development of Community Forestry activities** in Indonesia could provide better impact for the community income. Furthermore as law enforcement and forest governance be applied and eventually quality and quantities of forest management be implemented by communities, accordingly livelihoods of community living at surrounding forest areas will be secured and their welfare will also be improved.

EXECUTING AGENCY: CENFER FOR CLIMATE CHANGE AND POLICY RESEARCH, FORESTRY RESEARCH AND DEVELOPMENT AGENCY (FORDA)
MINISTRY OF FORESTRY INDONESIA IN COLLABORATION WITH FKKM, AND FOREST GOVERNANCE LEARNING GROUP

DURATION: 24 MONTHS

BUDGET AND PROPOSED SOURCES OF FINANCE:	Source	Contribution in US\$
	ITTO	456,680.00
	Govt. of Indonesia	55,050.00
	TOTAL	511,730.00

TABEL OF CONTENTS

	page
PROJECT BRIEF	ii
LIST OF ABBREVIATIONS AND ACRONYMS	iv
MAP OF PROJECT AREA	v
PART 1 PROJECT CONTEXT	
1.1 Origin.....	1
1.2 Relevance	3
1.2.1 Conformity with ITTO's objectives and priorities.....	3
1.2.2 Relevance to the submitting country's policies	5
1.3 Target area	6
1.3.1 Geographic location	6
1.3.2 Social, cultural, economic and environmental aspects	6
1.4 Expected outcomes at project completion	7
PART 2 PROJECT RATIONALE AND OBJECTIVES	
2.1 Rationale	9
2.1.1 Institutional set-up and organizational issues.....	9
2.1.2 Stakeholder analysis	10
2.1.3 Problem analysis.....	12
2.1.4 Logical framework matrix	16
2.2 Objectives	19
2.2.1 Development objective and impact indicators	19
2.2.2 Specific objective and outcome indicators.....	19
PART 3 DESCRIPTION OF PROJECT INTERVENTIONS	
3.1 Outputs and activities	20
3.1.1 Outputs	20
3.2 Implementation approaches and methods	21
3.3 Work plan	22
3.4 Budget	24
3.4.1 Master budget schedule.....	24
3.4.2 Consolidated budget by component.....	33
3.4.3 ITTO budget by component.....	35
3.4.4 Executing agency budget by component	37
3.5 Assumptions, risks, sustainability	38
3.5.1 Assumptions and risks	38
3.5.2 Sustainability.....	38
PART 4 IMPLEMENTATION ARRANGEMENTS	
4.1 Organization structure and stakeholder involvement mechanisms	40
4.1.1 Executing agency and partners.....	40
4.1.2 Project management team	40
4.1.3 Project steering committee.....	41
4.1.4 Stakeholder involvement mechanisms	42
4.2 Reporting, review, monitoring and evaluation	42
4.3 Dissemination and mainstreaming of project learning	43
4.3.1 Dissemination of project results.....	43
4.3.2 Mainstreaming project learning	43
ANNEX 1 PROFILES OF THE EXECUTING AND COLLABORATING AGENCIES.....	44
ANNEX 2 TERMS OF REFERENCE OF PERSONNEL AND CONSULTANTS AND SUB-CONTRACTS FUNDED BY ITTO	47
ANNEX 3 MATRIX RECOMMENDATION OF REVIEWER Rev 1.	49
ANNEX 4 MATRIX RECOMMENDATION OF REVIEWER Rev.2	53

PROJECT BRIEF

Community Forest Program (HKm) is implemented within the state forest where the use is prioritized to empower the community. In this scheme, a group of communities should have formal institutions such organization, and then the Government through the Ministry of Forestry give opportunity to the community group to manage such allocated forest area. The community group should apply a permit called *Ijin Usaha pemanfaatan Hutan Kemasyarakatan (IUPHKm)*. HKm is aimed at increasing the community's welfare by keeping forest function and its environment sustainable (*Permenhut P.37/2007 on Community Forest*).

One of the area that have been allocated for community forest working area is Sanggau District (SK Menhut No.SK.364/Menhut-II/2011, dated on July 7th 2011) in area of 76,090 hectares where covering 8 villages and 59 hamlet, and predominantly Dayak.

Up to now, progress of HKm area being licenced to community to be managed in Sanggau had achieved only 5% of total granted areas **In Indonesia**. These issues off course could be a constraint in community empowerment activities who are living around the forest in Sanggau District and an obstacle to promote the development of HKm program in Indonesia.

This proposed project is aiming at improve policy and legal frameworks and strengthen institutions targeted at improved law compliance and poverty reduction through one or more actions. This is in relating with thematic TFLET. This project is proposed to facilitate to empowering the Community Institution in the context of a sustainable community forestry management in Sanggau. **The communities targetted are Communities living in Sanggau area live with indigenous Dayak traditions systems.**

The expected output of the project are : 1) Increased **local community institution** 2) available **access to economic resources,** and 3) **Improved support from local government on community forest development** . To achieve of the project objective, the following approaches and methods among others: Collect and analyze data and information; conduct stakeholder consultation /dialogue and participatory discussions with local communities, private sectors and other relevant stakeholders ; Series training including entrepreneurship for communities activities. Facilitating intensively to the group of communities on doing the best practice of forest management and **connecting to** the funding agencies.

At the end of the project, it is expected that the economic development of HKm program activities in Indonesia can be expedited and provide better impact for the community income. Furthermore, the law enforcement and the forest governance shall also be applied and eventually the quality and the quantity of the forest being managed by the community will increase welfare of the local community for those are living around the forest.

The beneficiaries of the project will be forest communities, customary community and other forest dependent people in Sanggau District , West Kalimantan Province. The project will contributes to reduced rural poverty, secured access to forest resources, increased employment and income for forest communities, less social conflict and improved social capital among forest communities.

For governments, the project will provides benefits through harmonization of the policy and legal framework between community, local government and central government, stronger enforcement with improved cost efficiency as a result of stakeholder engagement in forest management, reduced conflicts in forest areas.

To ensure the sustainability community forestry programme that has been inisiated by this project, several approach will be developed: Developing commitments of implementing community forestry as a long-term programme; Developemnt baseline information on the resources and socio-economic conditions should be measured in the project design phase, developing institution of community through empowering and learning, developing mechanism, procedure and job description to support local and national government office to carry out their task on public services of community forestry and empowering capacity of key stakeholders by series training and extension activities.

The potential risk associated with the project and likely will affect its implementation are:

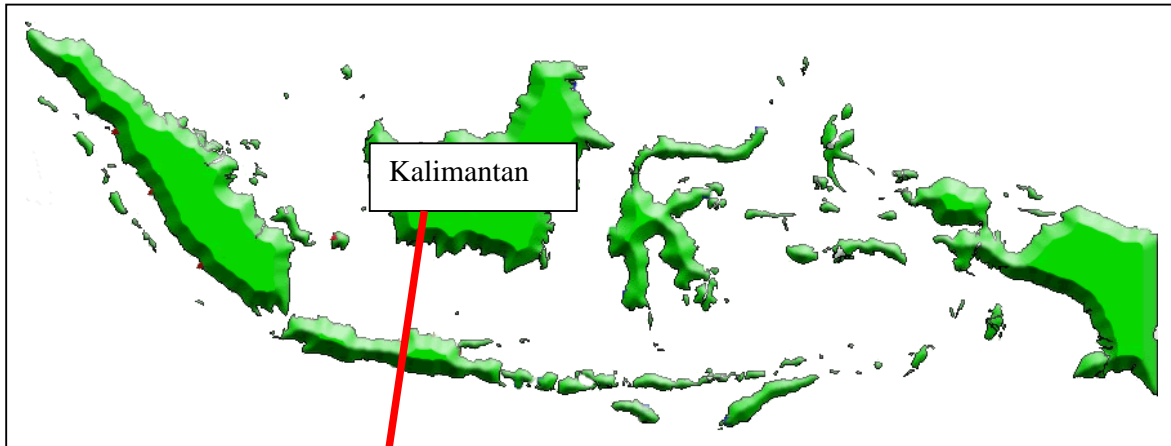
weak support from local government and conflict of interest between the local government and local communities

The proposed project indicated a total budget of US\$: **US\$ 511,730.00**. A significant amount of fund **US\$ 456,680.00** (96 %) is expected come from main donor (ITTO). Counter budget will be needed either in cash or in in-kind to run the executing agency (The Center of Climate Change and Policy, FORDA) totally **US\$.55,050.00**

LIST OF ABBREVIATIONS AND ACRONYMS

BPDAS	: Balai Pengelolaan Daerah Aliran Sungai = Agency for Watershed Management
CF	: Community Forestry
Dirjen	: Direktorat Jendral = Directorate General
FGLG	: Forest Governance Learning Group
FKKM	: Forum Komunikasi Kehutanan Masyarakat = Indonesian Communication Forum on Community Forest
FORDA	: The Forest Research and Development Agency
GIZ	: <u>Deutsche Gesellschaft für Internationale Zusammenarbeit, German</u>
HD	: Hutan Desa = Village Forest
HKm	: Hutan Kemasyarakatan = Community Forest
IUPHKm	: Izin Usaha Pemanfaatan Hutan Kemasyarakatan = License permits for Concession by Community Forest.
ITTO	: International Tropical Timber Organization
Litbanghut	: Penelitian dan Pengembangan Kehutanan = Forest Research and Development
MK	: <u>Mahkamah Konstitusi = Constitutional Court</u>
NGO	: Non Government Organization
PS	: Perhutanan Sosial = Social Forestry
PSC	: The Project Steering Committee
Puspajak	: Pusat Penelitian dan Pengembangan Perubahan Iklim dan Kebijakan = Center for Climate Change and Policy Research
PERMENHUT	: Peraturan Menteri Kehutanan = Ministry of Forestry Decree
SFDP	: Social Forestry Development Project
TFLET	: Thematic Programme on Forest Law Enforcement, Governance and Trade
UNTAN	: Universitas Tanjungpura = Tanjungpura University (at West Kalimantan)
YPSBK	: Yayasan Perhutanan Sosial Bumi Khatulistiwa = Foundation of Social Forestry at Bumi Khatulistiwa (at West Kalimantan)

MAP OF PROJECT AREA

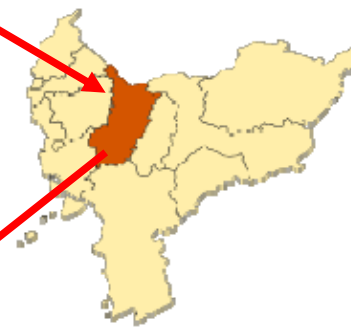


INDONESIA

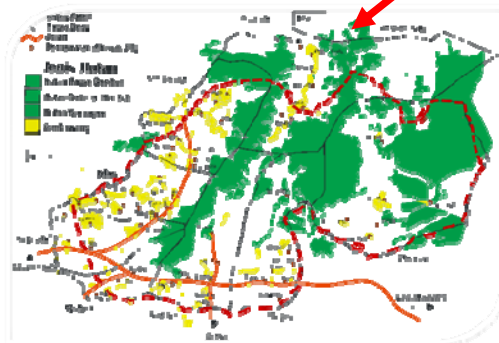
KALIMANTAN



SANGGAU DISTRICT



HKm Area in Sanggau District



PART 1 PROJECT CONTEXT

1.1 Origin

Currently there are over 50 million poor people in Indonesia live in and around the forest areas that their livelihood depend on forest resources. Therefore, social forestry policy that aims to empower communities to address the issue of poverty also will open access and space for the community forest.

In the presence of community forestry (CF) Program, there are some benefits to society, the government and the functions of the forest:

1. For the community, CF program could a) provide certainty of access to co-manage the forests, b) a source of livelihood, c) the availability of water that can be used for domestic and agricultural needs, and d) the better relationship between the government and other stakeholders.
2. For the government, CF program can a) contribute indirectly to land rehabilitation carried out by the community through self-financing, and b) community forestry activities affect forest protection.
3. For functions of forests and habitat restoration, community forestry can: a) encourage the formation of plant diversity, b) maintenance of the ecological and hydrological functions, through technical cropping and land conservation applied, and c) maintain the natural wealth of flora and fauna that have been there before.

In Indonesia, local community welfare had been a target in the forestry development. Because of that, the Ministry of Forestry of the Republic of Indonesia has put its priority programme on community empowerment through Community Forestry Programmes (*HKm*). Community Forestry Program is implemented within the state forest where the use of area is prioritized to empower institutions and livelihood of local community in particular. Under the scheme of CF, a formal organization is required to be formed before the Government through the Ministry of Forestry allocates certain area to be managed by the group of community forestry. The community group should apply a permit called *Ijin Usaha pemanfaatan Hutan Kemasyarakatan (IUPHKm)*. *HKm* is aimed at increasing the community's welfare by keeping forest function and its environment sustainable (*Permenhut P.37/2007* on Community Forest).

Actually this project is proposed as a further steps from a number of projects and activities that have been carried out in this area, as follow:

- 1990-2002, Social Forestry Development Project (SFDP), a joint project between the Ministry of Forestry and GIZ which aimed to develop a system of community based forest management in order to improve the welfare of local communities while maintaining sustainability. During this period, so many activities have been conducted, such as forest and land arrangement; Institutional development of area manager, cooperatives and forest user groups; development of timber and non-timber businesses and micro-economic institutions; Empowering communities through mentoring, training and study tours; reforestation and agroforestry development.
- After SFDP project completed in 2002, a number of activities carried out collaboratively between the Sanggau District Government with various parties, including the Yayasan Perhutanan Sosial Bumi Khatulistiwa (YPSBK), a local NGO, which have identified 10 potential locations of social forestry development (2002-2004). In collaboration with BPDAS West Kalimantan, this NGO facilitating community nursery plantation (2010/11,); and conducting Joint evaluation team with the Ministry of Forestry to evaluate the implementation of community based forest management scheme (2008); survey conducted in two hamlets (Tukun and Mobui) for preparation of CF program (2009-2010).

Since that, the program of Community Forestry scheme become target in the forestry development program to increase local community welfare. In July 2011, the Ministry of Forestry has allocated the area of 76,090 ha in Sanggau to be managed by local community after approval by the Head of District to issue *IUPHKm* through *SK Bupati*. Up to now, only three community groups were considered eligible to receive the rights of *HKm* management on the area in total 3760 ha. As compared to the total area allocated for *HKm*, which cover 76,090 ha, the number of *IUPHKm* approved by the Bupati is far behind the total area being targetted. Among various reasons for this low achievement is caused by un-readiness the group to implement the CF program and understanding the group about the program which is still limited. Often, the group of government at

the national and local level each has different interpretation about CF regulation and different interests about the program. In addition to that, at the implementation both local community and NGO together with private entity have other kinds of understandings about the program of CF. Thorough analysis about understanding of the program of CF will be needed from the perspectives of various stakeholders, that include analysis about applicability of the regulation for different characteristics of stakeholders and for different purposes of implementation, among others for protected stream water resources and for conserving biodiversity while also improve livelihoods of the community .

As set by the Strategic Plan for 2010 – 2014, the Ministry of Forestry has allocated total area 2 million hectares of forestlands to be managed under the HKM schemes. The allocation will facilitates the establishment of 500 groups of license holders and 50 units of partnerships between community group with with business entity. In order to meet the target, government shall endorse policies which address the actual and common practices of natural resource management, and further harmonize it into the program of CF.

Recently, the policy on CF has been strengthened by the initiative for local community to build partnership with business entity through the Forestry Decree of *Permenhut* no. P.39/Menhut-II/2013 on Local Community Development through Forestry Partnership. The group of local community can implement programs in partnership with CF Permit Holder or with the Forest License Holders and primary industry businesses, and / or the forest Management Unit. The *Permenhut* clearly disclosed the purpose of Empowering local communities through the Forestry Partnership is the realization of local communities to benefit directly, through capacity building and provision of access to, participate in achieving sustainable forest management, and may gradually develop into a formidable economic actors, independent, responsible and professional. It is hoped the community will play an important role in the CF program, since this program is still ongoing processes for its implementation and there rooms for policy improvement to enable the program be technically implemented in accordance with field conditions.

Local community and its traditional institutions have gained significant supports with the recent decision issued by the Constitutional Court Decision No. 35/PUU-IX/2012. The decision underlines strong position of indigenous peoples (customary communities) in sustainable forest management, although in many locations there still numbers of obstacles faced by the group of local community to work out further decision of the court. Among the problems is the need for adjustment measures between the Constitutional Court Decision with other policies related to indigenous forest communities.

Adjustment between the Constitutional Court Decision with the policy of CF is particularly relevant with the case of Sanggau. As many studies have reported, local people at the district Sanggau originally came from the Dayak ethnic group, which later mingle with other ethnic groups from all over Indonesia who came and resettle in the district as migrants. The local group practices *tembawang* as a landuse system which acknowledge communal ownership over the land and natural resources and distinguish the landuses based on different kinds functions for community. Rubber garden, fruit garden, land for shifting cultivation and protected garden are among the distinction of landuses which are enforced by customary law of adat rules. System of forest management by local people in Sanggau is a combination of forest, former farm, agro-forestry and rice fields, This local practices has proved to be sustaining natural resources. The project will encourage landscape management that includes forest, former farm, agro-forestry and agriculture as an integrative model that support the well-being and sustainability.

The existence of present conditions at the discretion of the government-policy should be understood by the local government and communities. This issues need significant role of the Center for Climate Change and Policy Research (*PUSPIJAK*) to analyze gaps between policy and local practices, adjust policy based on workable implementation while also propose for policy improvement. *Puspijak* takes action research as the approach to conduct its research and brings the result into policy makers for policy improvement. Such approach will facilitate the Center to identify constraints for implementing the policy of CF, and hence it is expected through collaboration between research center with various stakeholders will able to provide recommendations on the settlement of the existing policy gaps.

1.2 Relevance

1.2.1 Conformity with ITTO's objectives and priorities

(1) Compliance with ITTA 2006

The project is fully conform with the objectives of the International Tropical Timber Agreement (ITTA) 2006, on article 1 in specifically on paragraph:

- a) Contributing to sustainable development and to poverty alleviation;
- b) Enhancing the capacity of members to implement strategies for achieving exports of tropical timber and timber products from sustainably managed sources;
- (n) Strengthening the capacity of members to improve forest law enforcement and governance, and address illegal logging and related trade in tropical timber.
- (r) Encouraging members to recognize the role of forest-dependent indigenous and local communities in achieving sustainable forest management and develop strategies to enhance the capacity of these communities to sustainably manage tropical timber producing forests;

The project activities that will contribute to the ITTO objectives are as follows:

1.1. Improve community knowledge on policy regulation of CF through several dissemination program

1.2. Carry Out One package of entrepreneurship Training in Sanggau

1.3. Carry Out 6 times trainings and workshops to improve community's capacity on management plan and CF management technique (for instance a Five-Yearly General Plan, a yearly operation plan, marketing and monitoring activities)

(2) Compliance with ITTO Action Plan 2013-2018

The proposed project complies with strategic Priority raised in the ITTO Action Plan 2013-2018 such as

Strategic Priority 1: Promote good governance and enabling policy frameworks for strengthening SFM and related trade and enhancing SFM financing and investment.

This strategic priority will be accomplished through project activities inter alia: **Improving community knowledge on policy regulation on Community Forestry**, strengthening forest law compliance and governance **by formulating local policy to support CF development**, strengthening capacity of community and other small and medium-sized enterprise (in the form of Hkm), support to production and marketing of legally produced tropical timber and effective supply chain management. (output 1, and output 3).

Strategic Priority 6: Build and develop human resource capacity to implement SFM and increase trade in forest goods and services from sustainable managed forests.

This strategic will be implemented through project activities such as improving capacity of stakeholders in managing Hkm in Indonesia through trainings, dissemination of regulations, facilitating market access for the communities' products (**output 2 and Output 3**)

(3) Compliance with Thematic Programme on Forest Law Enforcement, Governance and Trade (TFLET)

The proposed project is coherent with the general objective of the Thematic Programme which is to improve national forest law enforcement and governance in tropical ITTO member countries in strengthening the capacity of members to improve forest law enforcement and governance, and address illegal logging and related trade in tropical timber; improving the marketing and distribution of tropical timber and timber product exports from sustainably managed and legally harvested sources; contributing to sustainable development and poverty alleviation; and recognizing the role of forest-dependent indigenous and local communities in achieving sustainable forest management and developing strategies to enhance the capacity of these communities to sustainably manage timber producing forests.

And consistent with the specific objective of the programme:

1. To strengthen forest law compliance and governance through improved national policy and legal frameworks, strengthened enforcement and other institutions, improved data and knowledge, strengthened partnerships and improved cooperation among the private sector, civil society organizations and other stakeholders.
2. To improve capacity of community and small and medium sized enterprises to implement and demonstrate that timber produced and traded comes from legal sources contributing to sustainable livelihoods.

Project Activities that contribute to the achievement of specific objective of the TFLET Program:

Activity 1.1. : Improved community knowledge on policy regulation of CF development

Activity 1.3. : Strengthen technical capacity of community regarding community forestry management.

Activity 2.1. : Provide and improve data and Information on Economic resources of CF groups

Activity 3.3. : Formulate one package local policy to support CF activities in Sanggau

The proposal is also consistent with the program objectives such as:

A. Strengthening forest law compliance and governance.

- 1) Improve policy and legal frameworks and strengthen institutions targeted at improved law compliance and poverty reduction through one or more of the following actions
 - c. Design revision of forest legislation including on forest and land tenure to improve access by forest communities and other local people to forest resources;

The project will formulate draft local policy to improve access by forest communities and other local people to forest resources.

- 2) Enhance capacity of the civil society, the private sector organizations and other actors to contribute to forest law compliance through the following actions:
 - a) Support capacity building and other efforts by the civil society and the private sector to detect and monitor illegal logging activities and other illicit activities in areas known to be critically affected by such activities;

One of project activities will be dissemination of related regulation in line with Community forest concession permit, training of communities on Hkm regulations.

- 3) Strengthen educational institutions and other relevant bodies to:
 - a) Develop and implement specific training courses and programmes on forest law compliance and governance, including training of trainers and training of forest-dependent communities and SMEs;
 - b) Elaborate and disseminate relevant training materials

C. Support capacity building of poor forest dependent communities and small and medium sized enterprises to produce and trade timber from legal and sustainable source through a variety of activities.

The program support from project will be achieve through Output 2: Improved information on access to economic resources, with Activities inter alia:

2.1. Collecting Data and information especially on Economic and Social issues at 4 villages in Sanggau District

2.2. Analyse Access to the markets for several products produced by communities at least from 2 villages/farmers group

2.3. Improve farmers' capacity in knowledge and access to timber market, a well as access to micro financing services providers

- 4) Support capacity building of poor forest-dependent communities and small/ medium sized enterprises to produce and trade timber from legal and sustainable sources through the project activities such as:
- a) Training and organizational development.

1.2.2 Relevance to Indonesia's policies

Community-based forest development is one of six Ministry of Forestry's priority program mentioned in the Ministry of Forestry's Strategic Planning year 2010-2014 which is community empowerment within and around forest. The Community Based Forest development is also related to other several programs at the Indonesian Ministry of Forestry, such as, eliminating illegal logging, reducing illegal use of tropical forests, supporting industrial forest plantation, development of wood-based industry and reducing greenhouse emissions. The proposed project will support the above mentioned programmes and should be co-ordinated to take in account synergies with already on going programmes.

Empowerment community's programme at the Ministry of Forestry inter alia, Community Forest and Village Forest Development. With target of 2,5 million hectares for period of 2010-2014, It is expected that this policy could contribute to the achievement of Millennium development Goals through reduction of poverty line including accelerating of forest rehabilitation as efforts of mitigation and adaptation to the climate change.

The activities to promote priority policy on Economic Empowerment for the community living within and nearby the forest area inter alia through the development of community forest (HKm), Village Forest (HD) and conservation village. Instead of that, increasing community economic business entity could be carried out through the development of existing products such timber and non timber forest products including rattan, saps, fruits, roots and a variety of environmental service business related to nature recreational activity.

The legal basic of community-based forest management was reflected on the Forestry Act no. 41 in 1999. In 2003, the new Minister declared the creation of the Social Forestry program. To implement this program, the Regulation of the Minister of Forestry, No.1 /Menhut-II/2004 was established in 2004. This regulation concerns empowerment of the people living within and surrounding the forest in the implementation of social forestry. In this regulation, social forestry is described as a forest resources management system for state forest areas and or private forests, which will provide the local people an opportunity to become the main actors and or partners in a simultaneous effort to increase local welfare and preserve the forest.

In early 2007, Government Regulation No. 34/2002 mandating the empowerment of communities within and surrounding forests in order to improve community institutional capacity in using the forest (Article 51). This regulation has been revised with Government Regulation No. 6/2007 that was mandated to empowerment of communities within and surrounding forests by three schemes, (1) Hutan Kemasyarakatan (HKm) or Community Forest, (2) Hutan Desa or Village Forest and (3) Kemitraan or Partnership (Article 84).

The regulatory framework of *Hutan Kemasyarakatan* has been completed by the Forestry Minister Regulation 37/2007 and revised by Jo. No. P.18/Menhut-II/2009, Jo. No. 13/Menhut-II/2010 and Director General of Land Rehabilitation and Social Forestry Decree No. P.07/V-SET/2009.

Several other regulations to support Community Forest Development had been formulated, and the proposed project is in line with country's policy/regulations such :

1. Ministry of Forestry Decree number P.98/Menhut-II/2010 dated 27 January 2010, concerning the Ministry of Forestry Strategic Planning year 2010-2014 which has its programme to improve the social welfare of the community in and surround the forest, and increase the capacity of forest community as well as improve the environmental quality.
2. Decree Ministry of Finance No. 137/KMK.05/2007 concerning the Establishment of National Development Fund as a Government funding agency to manage special fund for Plantation Development.
3. Basic Forestry Law No. 41 year 1999
4. Government Regulation No. 6 year 2007 Jo PP No. 3 year 2008 concerning Forest Governance and Planning Formulation as well as Forest Utilization.
5. Ministry of Forestry Decree No. P.23/Menhut-II/2007 Jo. Permenhut No. P.5/Menhut-II/2008 concerning Procedures of Proposing Plantation Forest Concession Permit.
6. Decree of Director General of Production Forest Development No. P.06/VI-BPHT/2008 on 17 September 2008 concerning Revision of the Director General Decree No. P.06/VI-BPHT/2007 concerning Guidelines of Plantation Forest Development.

1.3 Target area

1.3.1 Geographic location

The project target is a HKm area in Sanggau District – West Kalimantan covering 76.060 hectares that the government issued a *Surat Keputusan* of Minister of Forestry No. 364/Menhut-II/2011. The area comprises of Protection Forest covering ± 32.500 hectares and Production Forest covering ± 43.590 hectares. This area was designated to include in the Project of Social Forestry Development (*Proyek Pengembangan Hutan Kemasyarakatan PPHK*) or SFDP, a joint technical cooperation between the Government of Indonesia and Germany through GTZ that carried out in between 1990 and 2002 covering 102.250 hectares. Administratively, the Sanggau HKm area spreads around 4 sub districts and 9 villages namely:

- a. Bonti Sub district : Mejel and Bantai village
- b. Kembayan Sub district : Mobui and Sejuah village
- c. Noyan Sub district : Idas, Semongan and Sungai Dangin village
- d. Jangkang Sub District : Pisang and Empayang village

Sanggau is selected due to its location at the border with Malaysia which often been reported with high risks and cases of illegal logging and timber smuggling. The District of Sanggau is surrounded by protected areas, they include the National Park of Danau Sentarum, the National Park of Bukit Baka-Bukit Raya and the National Park of Betung Kerihung as among the largest conservation areas in Indonesia. Sanggau is also the place where the largest area of HKm is allocated by the Ministry of Forestry.

1.3.2 Social, cultural, economic and environmental aspects

In general, rural communities where living around the Gunung Buduk Gunung Besi in Sanggau where spread into 3 *ketemenggungan* (costumary area/boundary) and apply a Dayak traditional customary law:

- a. Ketemenggungan Jangkang Kanan : Pisang and Empiyang village
- b. Ketemenggungan Bonti Ujung : Bantai and Mejel village
- c. Ketemenggungan Benua Mawa : Semongan, Mobui, Sungai Dangin and Idas village.

They have a traditional system of land tenure that refers to the indigenous Dayak rules that have been applied for generations and establish a unique system of land tenure as well known as slash and burn or rotation. Rights to land on the Dayak community in Sanggau, always associated with opening primary forest/jungle, then planting paddy fields. After harvesting 1-2 times, then that land being left or unused for long periods. After 15-20 years, the unused land then become a forest and will be ready to be reopened to paddy field. But sometimes the unused land then will be built into rubber plantations and oil palm plantations which are privately owned. Infrequently the unused land then has been allowed to become mixed garden (complex agroforestry system) between fruits and trees like a forest ecosystem, the land is belong to family (*tembawang*) or community land (*Parua*). Trough this pattern, land/forest is not only a source of livelihood, but still retain for the environmental services, especially for water resources

From the brief description above it shows that the customary law as the basis to regulate land use and land tenure. In this context, the customary law recognizes the existence of:

- a. **Communal/alliance Rights, which applies to the virgin forest and was recognized as belonging to the community village. Every community village has the right to work on that forest within the village boundary. This customary right is so powerfull, so that a new patch of forest land only can be loaned to outsiders after 3 rotation of paddy field work. In addition, the village/community forest can not be traded without the consent of communities and customary leaders.**
- b. **Individual/private rights. This is the right of every member of community citizen. Initial tenure begins when a member of community is opening patch from virgin forest (jungle) into paddy land (*ladang*). This patch then became privately owned land and can be inherited, sold and borrowed to a fellow villagers and outsider.**

Rubber was introduced to Sanggau since early 1900, by the migrants who returned from working in Malaysia. Since then, the Dayak community in Sanggau combine rubber in their land as complex agroforestry systems, where rubber is grown mixed with other crops, fruits, and timber. Until now, rubber agroforest is still a main source of income for the community in this area. There are two types of rubber being grewn by the community such as natural rubber and occulation rubber types.

The natural rubber produces will be sapped after 4-5 years planting and has productivity around 8-10 kgs per hectares. However the occulation rubber can produce 18-20 kgs raw rubber per hectare and be able to be sapped when the plantation reaches 3-4 years old. The community use to sell the rubber products to collectors who frequently visit their villages and offer the fluctuated price at around Rp12,000 – Rp 20,000/kgs

Beside the rubber products, fruits (such as rambutans, durian and langsung) and timber from the *tembawang* (family forest) are also sources of community's income today. During *durian* season, the community members collect the *durian* from their *tembawang* and sell out the products to other community members or sometimes they travel outside the village to trade the products. There are in some cases that the buyers or collectors from outside the region intentionally visit the village that they even be functioning to do a pre-buying by ordering the standing products prior to harvesting. In the past period of SFDP project, the timbers from the *tembawang* were a trading commodity and one of major family's income.

In the management of forest, paddy field (*ladang and sawah*) and rubber plantation, woman has play equal role as a man, in order to support household economic. In paddy field work, woman are also involved in opening the forest to be patch of paddy land, preparing and planting seeds, caring for plants and harvesting the rice sessions; also in rubber plantation, from preparing and planting seeds into day to day rubber tapping activities. In many villages in this area, there are also women farmer group who focus on empowering woman group, management on farm and handy-craft activities for an alternative income generating for family.

The agroforestry model being applied which is a combination of *Tembawang* and rubber pays attention to sustainability of environment. It needs to be promoted to a larger communities to influence a significant impact toward the increasing family's income. Recently, there is existing palm oil plantation in Sanggau area that has been paid the communities' attention. There is tendency of the community to change their forest plantation or rubber with oil palm. Today, community's palm oil plantations are growing with support of palm oil companies that are operated around their area.

Tembawang is found almost in all districts of Sanggau, West Kalimantan. *Tembawang* represents the management system practised by the Dayak Bidayuh which consists of: communal natural forest, island of secondary forest, managed honey trees, rubber plantation, swidden fallow, *ladang* swidden, rice field, *kampung* settlement and home area in swidden. Sundawati (1993) classifies *tembawang* as part of a Dayak society garden consisting of home garden, forest garden and rubber plantation (mixed rubber-garden). In general, *tembawang* is practised by the Dayak Bidayuh to establish gardens of fruit and woody trees. The products of this effort are fruits like durian, langsung, rambutan, entawak, mango, tengkawang; rubber of *Hevea brasiliensis* and rubber of nyatoh; wood for building, charcoal and fuelwood; and also various plants that can be used as local medicines. Sustainability of *tembawang* garden being challenged with the ongoing commercial plantation by using one single homogenous species, that threaten rich biodiversity of *tembawang* garden. Increased capacity of HKm community as proposed by this project is expected to strengthen customary practices in sustaining the rich biodiversity of *tembawang* garden in this area.

1.4 Expected outcomes at project completion

It is expected that upon completion of the project, The capacity and community organization in managing the Community Forestry in Sanggau improved and produces a strong impact to expedite the development of HKm Program implementation in Indonesia. Access to market information and economic resource available and, and improved local government support on communities forest development. Furthermore, the long term impact will be the increasing welfare of community living nearby the forest, improved Forest Law Enforcement and Governance and increased quality and quantity of forest being managed by community to achieve SFM.

The expected outcome on Improved Forest Law Enforcement and Governance will be achieved through improved national policy and legal frameworks, strengthened enforcement and other institutions, as well as improved data. These expected outcome/long term impact of the project are relevance to the achievement of TFLET general objectives which is to improve national forest law enforcement and governance in tropical ITTO member countries in strengthening the capacity of members to improve forest law enforcement and governance

For that reason, this proposed project will need to formulate a draft of local decree that will be implemented in accordance with the conditions and potential in the field. The regulation is needed as policy management of forests in the region

As mentioned in Act No. 12/2011 Article 35 noted that in order to draw up the legislation it should be based on Regional Legislation Program which is based on the aspirations of many parties, including the aspirations of local communities. In order to support the aspirations of the people in drafting Provincial legislation program, properly local regulation will be needed to Regulate a matter at village level in accordance with Rule related to CBFM and CFE that will be developed. Thus the village regulation will also be one of the tangible output of this program

Soon as the village/local regulation being effectively implemented, there will be an increased access to forest resources by forest communities and other forest-dependent people.

All of the preparation on the drafting of village regulation, local decree and regulations in the project area will be escorted and facilitated by Puspijak, institution relevance to the ministry of forestry policy formulation and its implementation will be facilitated by FKKM related to the suitability of the conditions on the ground

PART 2 PROJECT RATIONALE AND OBJECTIVES

2.1 Rationale

2.1.1 Institutional set-up and organizational issues

The Community-based forest management of HKm serves as the rights to be granted for community who are living inside or surrounding areas of the state forests. The rights to manage protected forests and production forests apply for certain period. Based on the Regulation on HKm which is labeled as the Forestry Regulation no P.37/Menhut-II/2007, the rights assign particular group of local community to manage forests in surrounding their living in sustainable manner with additional benefits to improve communities welfare. By having the rights on forest management, the communities are expected to be empowered and their capacities will be enhanced in conducting the management, also in organizing diverse interests of their members.

In this scheme of HKm, certain requirements should be met by the right holders, in addition of procedures which need to be followed. They include requirement for local communities to form a cooperative as a business entity. However, such business entity shall be based on local practices and customary wisdom. The project will encourage local government at the level of village or sub-district to play as facilitators in establishing farmers groups, also in building up ability of community in organizing, institutionalizing as well as in developing technical skill to manage forests. In organizing community, rules and regulations will be developed for all members by encouraging application of customary law which are familiar for all the members. That include regulation to enforce rules and to resolve/mediate conflicts. Customary rules of Dayak shall be encouraged considering local communities in the proposed project area come from more or less homogenous characters of ethnic background instead of Dayak community. Intensive communication between local government with groups of local communities will bring institutionalization of two ways communication in developing rural region. That will match expectation from communities with provision from local government.

Based on the Ministry of Forestry Letter No.SK.364/Menhut-II/2011 dated 07 July 2011, the HKm area in Sanggau District is covering area of 76,090 hectares, and the locations are distributed on 4 sub districts, 8 villages and 59 sub villages. The communities in this HKm area have been granted a Licence of Community Forestry Utilization Business (*Izin Usaha Pemanfaatan Hutan Kemasyarakatan – IUPHKm*) issued by Sanggau District leader for the communities living around the sub districts of Jangkang, Bonti, Kembayan and Noyan. The community members those are living inside or around the said area should have a maximum operating on 15 hectares per family and paying attention to the preparation of institutionalising the community groups prior to get granted the licence. IUPHKm is issued for activities of utilization areas, environmental service use and non timber forest products use where the locations are outside of the protecting compartment within the protection forest. Institutionalization in the level of community comprises of 3 HKm farmers groups and 3 *ketemenggungan*.

A number of activities had been carried out collaboratively between the Sanggau District Government with various parties, including the Yayasan Perhutanan Sosial Bumi Khatulistiwa (YPSBK), a local NGO actively facilitated the communities. The other parties are FKM, a forum on communitcation of forestry' communities.

The existence of present conditions at the discretion of the government-policy should be understood by the local government and communities. This issues need significant role of the Center for Climate Change and Policy Research (Puspijak) to analyze since Puspijak is the only Research Center for the concentration of forestry policy. Puspijak is expected to be able to identify the constraints that will be encountered in the implementation of CF policies and then expected Puspijak be able to provide recommendations on the settlement of the existing policy gaps.

Hence, Executing Agency of the project is Center of Climate Change and Policy Research, FORDA (Forest Research and Development) namely PUSPIJAK of the Ministry of Forestry. The EA will analyze gaps between policy and local practices, adjust policy based on workable implementation while also propose for policy improvement. PUSPIJAK takes action research as the approach to conduct its research and brings the result into policy makers for policy improvement. Such approach will facilitate the Center to identify constraints for implementing the policy of CF, and hence it is expected through collaboration between research center with various stakeholders will able to provide recommendations on the settlement of the existing policy gaps.

The EA need a collaborating agency to implement project activities in the field, inter alia Indonesian Communication Forum on Community Forestry called FKMM which has experienced working with communities and the parties in Sanggau district and FGLG (Forest Governance Learning Group), an independent group promoting Forest Governance.

FKMM in this project will facilitate the communication of the parties on the site, develop capacity building (entrepreneurship and community based forest management), and strengthening community forest management institutions with partners

In the Executing the project activities, Puspajak will make a MOU with FKMM as an implementing institution, mentioning role and responsibilities of each parties.

The role of FGLG , assist in preparing the project formulation and involve in the forest governance issues and mainstreaming the project activities after project completion.

2.1.2 Stakeholder analysis

Table 1. Stakeholder Analysis

Stakeholder Group	Characteristics	Problems, needs, interests	Potentials	Involvement in the project
Primary Stakeholders				
Forestry Community Group	<ul style="list-style-type: none"> • Very much dependent on the forest • Get the allocated area work for Community Forestry 	<ul style="list-style-type: none"> • Insufficient capacity of community in developing a Community Forestry management plan • Lack of capital 	<ul style="list-style-type: none"> • Have already formed a community group • Have an agroforestry system • Have a resources to implement Community Forestry activities 	As a practitioner at the field area work jointly with the Executing Agency.
Traditional Community (3 <i>Ketemengungan</i>)	<ul style="list-style-type: none"> • Very much dependent on the forest • Forest as a heritage • 	<ul style="list-style-type: none"> • Lack of capacity • Need a recognition from the government 	<ul style="list-style-type: none"> • Potential conflict over government's regulation • Traditional institutionalization 	<ul style="list-style-type: none"> • Will be involved in training implementation and socialization • Actively involve in strengthening the institution
Private Sector : PT Mega Karya Dwipa (mining of <i>bijih besi</i>), Private company.	<ul style="list-style-type: none"> • Have already received a licence of rent use from the Ministry of Forestry (<i>pinjam pakai</i>) Kemenhut • Have prepared the working area & developing the road 	<ul style="list-style-type: none"> • Exploration of <i>bijih besi</i> in the area of community forestry • Lack of coordination • Potential on Land conflict with community 	<ul style="list-style-type: none"> • Land Overlapping, will be potential conflict • Not involved the community in activities 	<ul style="list-style-type: none"> • Will be Involved in the multistakeholders forum • As stakeholders
Local government at village level	<ul style="list-style-type: none"> • Authority on village level administration process • Very much familiar with the area of operation 	Lack of coordination	<ul style="list-style-type: none"> • Has resource • having experience in facilitation local community 	• be involve in field level activities such capacity building activities.
Local Institution namely FKMM (Indonesian Communication forum on Community Forest)	Facilitate the community for activities related to forestry issue.	Lack of capacity in communication/facilitation with local government	<ul style="list-style-type: none"> • Having resource • Many networks are already established 	• Involved in project activities mainly in facilitating dialogue with local communities

Stakeholder Group	Characteristics	Problems, needs, interests	Potentials	Involvement in the project
Local Gov : Sanggau District	<ul style="list-style-type: none"> Locally based They have resources They are regulator and law enforcement problem 	Limited coordination Lack of capacity in carrying out facilitation works	Have authority In district/	<ul style="list-style-type: none"> Involved in project activities mainly in facilitating dialogue and discussion in district level , Working together with Executing Agency
Secondary Stakeholders				
BPDAS Kalbar (West Kalimantan Watershed Management Agency)	Having responsible to facilitate and assist Community Based Organization in delineating, boundary marking and mapping of their working area, together with the Technical Implementation Unit of Directorate Planology.	Lack of capacity in coordinating several different related stakeholders.	They have authority in monitoring and assessing the progress and performance of Hkm Development.	Facilitators and providing technical assistance in preparing and carrying out area delineation, formulating general working plan

Puspajak Litbanghut (Center for Climate Change and Policy Development, FORDA)	<u>Actively doing research on policy, regulation on forestry activities and climate change issues</u>	Lack of coordinating and disseminating the result of research activities.	Having enough researcher on social development, economical study of certain communities activities.	<u>As Executing Agency</u> in providing information on technical matters of forestry development and <u>Analyzing policy and regulation that will support community forest development.</u>
Dirjen BPDAS-PS (DG of Watershed Management and Social Forestry Development).	Managing natural and plantation forests	High pressure on natural forest . Should promoting plantation forest	Having resources Having network	Provide manual for training activities with target group are: communities, small/medium forest enterprises
YPSBK (name of Local NGO)	active and having basic communications skills to approach communities	Need improved knowledge, and skill to increased the facilitation capacity.	The local NGO have similar traditional background at socio-culture with the community forest owner.	<u>Local intitution (NGO that will be as</u> Project partner
UNTAN (Tanjungpura University)	Having knowledge and technology to gain important data and information Broad network	<ul style="list-style-type: none"> Improve network with relevant research parties 	Involved as <u>partner</u> of the project	Contribution in reviewing and analyzing some matters related to community forest policy, and regulation.

<u>Private Company namely PT Finnantara Intiga, a Timber Estate company</u>	<u>Privately owned company that given concession for timber plantation</u>	• <u>The company acting as a partner to the community in marketing the community timber products</u>	<u>Could be involved as partner to the community through partnership program</u>	<u>As a partner to the community, as stakeholders that will be involved in the project activities.</u>
Tertiary Stakeholders				
Other Private Sector	Having resource to support the the development of <u>community Forestry</u>	Insufficient knowledge and understanding of the rules and regulations of the community forestry	Institutions have sufficient (enough) sources to develop community forestry	• <u>Could participate in</u> Preparing scheme of funding assistance such as revolving fund scheme for community forest <u>Or as a partner of the community's group</u>

2.1.3 Problem analysis

Community-based forest development is one of six Ministry of Forestry's priority program mentioned in the Ministry of Forestry's Strategic Planning year 2010-2014 wih is community empowerment within and around forest . The Community Based Forest development is also related to other several programs at the Indonesian Ministry of Forestry, such as, eliminating illegal logging, reducing illegal use of tropical forests, supporting industrial forest plantation, development of wood-based industry and reducing greenhouse emissions. The proposed project will support the above mentioned programmes and should be co-ordinated to take in account synergies with already on going programmes.

Empowerment community's programme at the Ministry of Forestry has a different schemes inter alia, Community Forest (HKm) and Village Forest (HD) Development. With target of 2,5 million hectares for period of 2010-2014, It is expected that this policy could contribute to the achievement of Millenium development Goals through reduction of poverty line including accelerating of forest rehabilitation as efforts of mitigation and adaptation to the climate change

Based on the Ministry of Forestry Letter **No.SK.364/Menhut-II/2011** dated 07 July 2011, the HKm area in Sanggau District has given an area of 76,090 hectares, and the locations are distributed on 4 sub districts, 8 villages and 59 sub villages

Communities living in Sanggau area live with indigenous Dayak traditions system that the area consist of 3 Ketemengungan (customary areas). Since they live and work in the area designated as community forestry management by the Forestry Ministry, then the farmer groups should have permission from the Head of the Regency to get a Licence of Community Forestry Utilization Business (Izin Usaha Pemanfaatan Hutan Kemasyarakatan – IUPHKm). IUPHKm is issued for activities of utilization the areas, environmental service use and non timber forest products use where the locations are outside of the protecting compartment within the protection forest.

As of early 2013, It has been issued 3 IUPHKm in Sanggau to three groups of community forestry by Head of the Regency. At this on going 2013 there are four more communities' group being driven by the Forestry and Plantation District Agency and facilitated by YPSBK the local NGOs to get IUPHKm. However, with the newly release of the Court's decision No. 35 of 2012 which declares that Customary Forests is no longer in the state forest land, so the community groups belong to the customary groups living in the 3 Ketemengungan may possible apply this area of HKm to be managed as they Customary Forests. Unfortunately, there is Limited capacity of farmer to manage forest systems adequately and the lack of local government support as well as Ministry of Forestry to improve their community forestry management system. It needs a facilitation from this proposed project to sustain community forest management system.

The Issues of Community Forestry program and Customary Forest management will be managed by the project to ensure the tenure policy and forest management in the region can go hand in hand. Lack institutional capacity of local community in forest management and entrepreneurial spirit, as well as problem relate to market access and financial institutions considered as constraints to the progress of Community Forestry development program. This issues will be addressed by the proposed project.

Weak capacity of local community to manage their community forest in Sanggau are indicated by 3 factors:

- a. In-sufficient Local Government support on Community Forestry development
- b. Limited Access to economic resources such as access to market, and financial resources
- c. Weakness of local community institution including their entrepreneurship and forest management skills

The area of Sanggau HKm are vast and need to get support by a good policy and proper regulation hence community empowerment can be achieved, and the forests themselves could be managed sustainably by the communities. To manage the area of 76.090 hectares HKm need a sufficient capacity therefore the management could be carried out in a good manner and sustainable. The management itself should be supported by data both are provided with sufficient potential and problems information. In order to that, data of ecological, economical and social value are to become important to be explored from the Sanggau HKm area.

In terms of policy and regulation, there are set of regulations related to Community Forestry program, inter alia regulation of licensing permits from Bupati on IUPHKm that being granted to groups of HKm farmers. There are still inconsistencies on those regulations formulated in the Central government and in the provincial as well as local government. and is coming to an important factor to be paid attention by government and other stakeholder groups. In addition, It is also important to design a specific policy organized by the local government of Sanggau District for the said areas, from both organizational side and areas management itself. Policy about timber forest harvesting from *tembawang* or community forest should also be paid attention because the areas partially are production forest. Improvement of policy and legal frameworks and strengthening of institutions will support the strengthening of forest governance.

Groups of established HKm still need to be facilitated in creating a HKm group plan or management plan. **Strengthening** Capacity of local government, NGO assistances, and other assisting elements are important to facilitate the setting up management plan and monitoring the HKm activities. The HKm community practioners are necessary to be facilitated to increase their capacity to have a technical HKm management skills which is part of community empowerment.

In managing the vast area of HKm, a collaboration among parties are important that becomes necessary to increase the efforts approaching stakeholders capacity building. The capacity among stakeholders have to be liften up in order that the coordination and synergy of HKm management are better and the management could be carried out sustainably.

Limited Access to economic resources

Limited farmers' capacity in knowledge and access to timber market, a well as access to micro financing services providers are the other factors that could be a constraint to the improvement of livelihoods in general and CF Program in particular. Sufficient data and information on socio-economic characteristics are important to identify the current livellihoods for fural families.

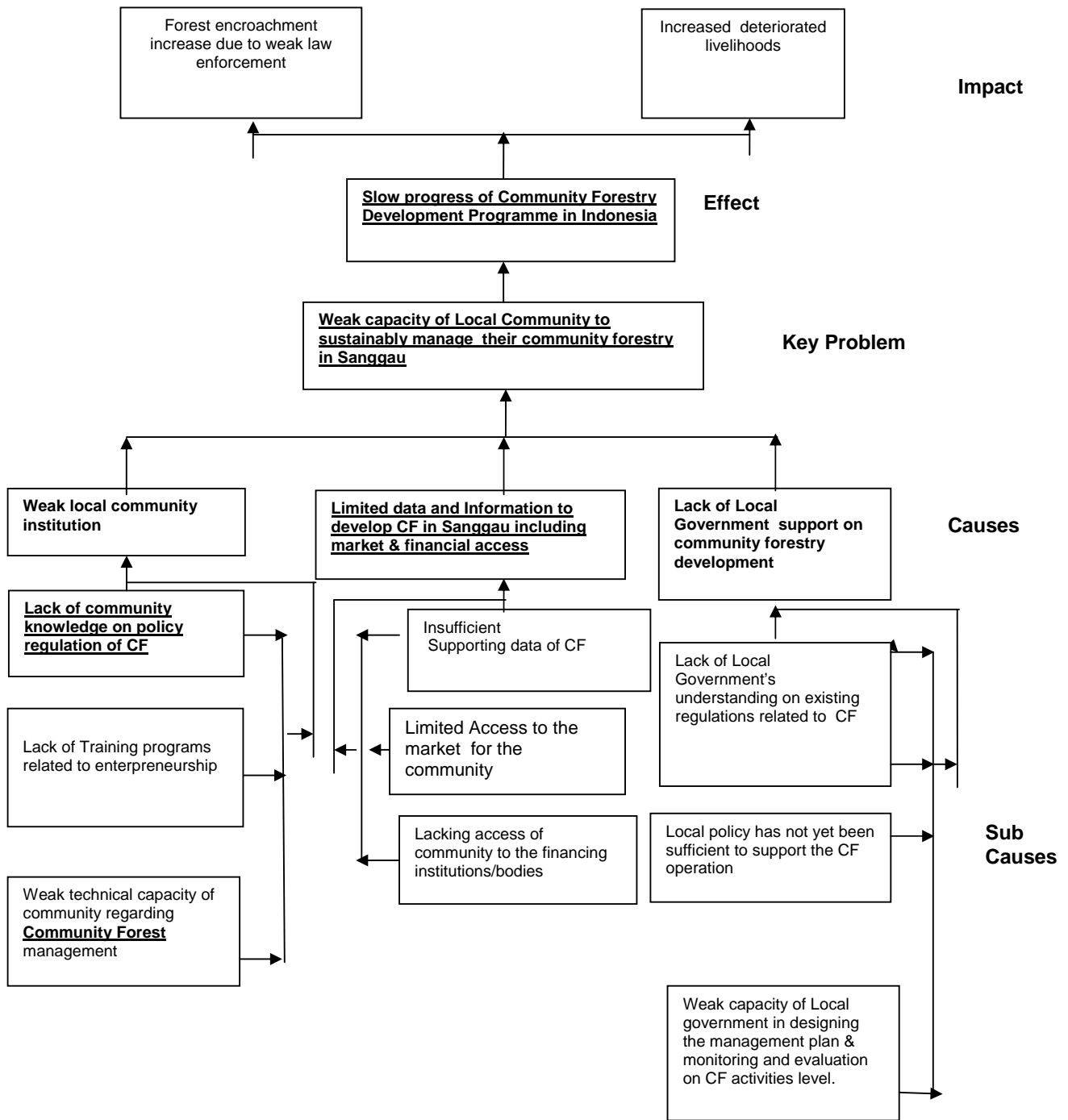
Weakness Local Community institution

One of HKm establishment's goals is to increase welfare of the community living nearby the forests by utilizing the potential value of forests resources. Hence, community assistance comes to an important point in the scheme of the HKm designation to achieve the goals as expected. In fact, assistance program being carried out by relevant agencies are insufficient. It needs an expanding effort and other assistances established by other parties should be accomodated to speed up the process of achieving goals especially NGOs' assistances.

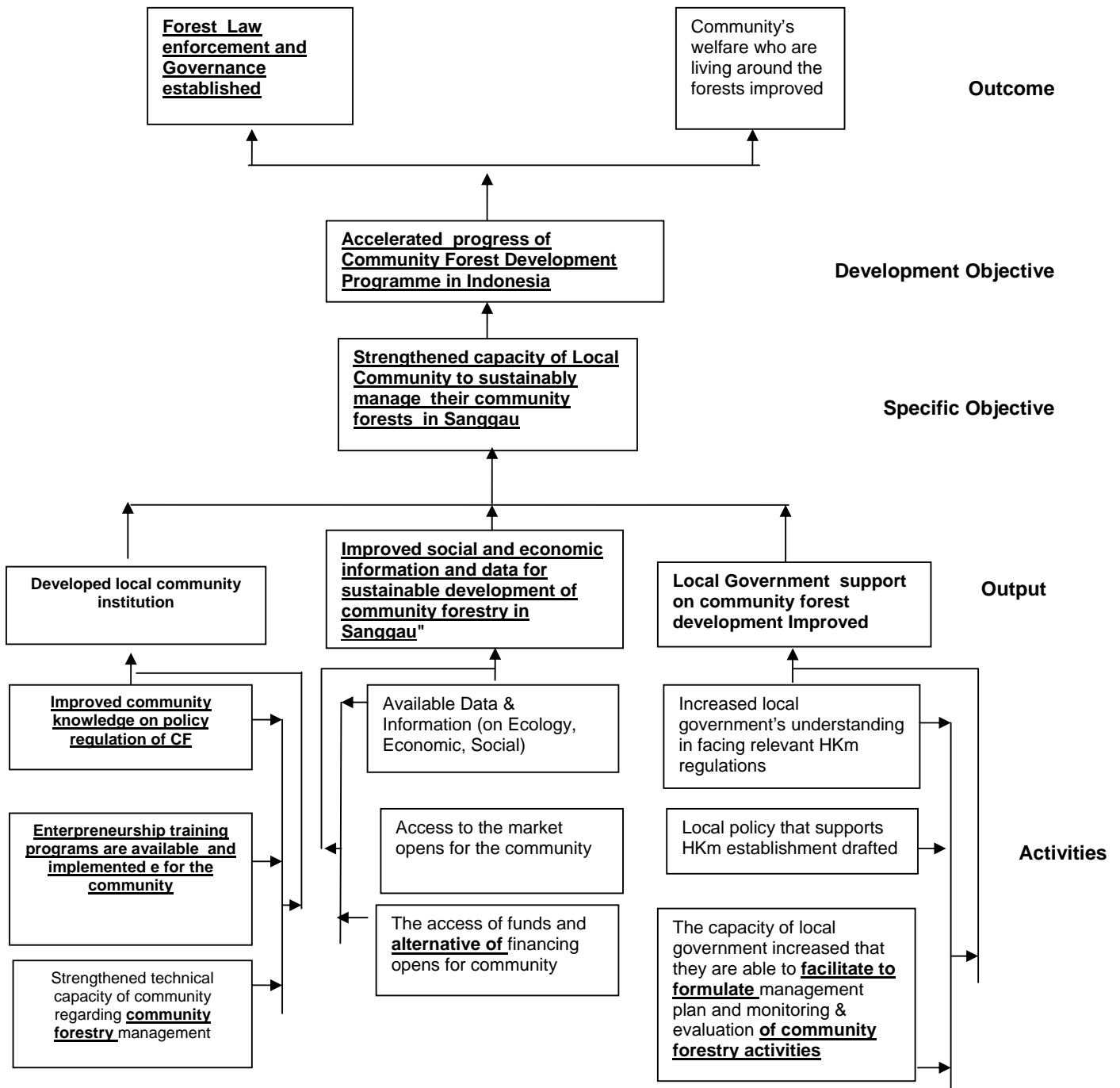
Programs of entrepreneurship skills that are dedicated to community are still insufficient to promote community forestry's based activities. Entrepreneurship training become a relevant point when the HKm goals are to increase community's welfare. Entrepreneurship training will improve an attitude of community's entrepreneurship to utilizing forests resources potential values, that also get community's support in facing market and financing.

In diagram, the problems are depicted on the problem tree and objectives as follow:

Problem Tree



Objective Tree



2.1.4 Logical framework matrix

<i>Strategy intervention</i>	<i>Measurable Indicators</i>	<i>Means of verification</i>	<i>Key Assumptions</i>
<p><u>Development Objective</u></p> <p><u>To contribute to speed up the development of Community Forestry Program in Indonesia</u></p>	<p><u>Long impact indicators</u></p> <ul style="list-style-type: none"> ▪ <u>Five years after project completion, community forestry' development target as mentioned on the Ministry of Forestry's Achievement Plan could be achieved</u> and 20% from the target operationalized as expected 	<p>Ministry of Forestry's Annual Report</p>	<p>Local Government Regulation support the community forestry development policy.</p> <p>Target achievement are planned and monitored carefully.</p> <p>Sanggau Local Government does not issue the licence which is against the Community' Licence.</p>

Strategy intervention	Measurable Indicators	Means of verification	Key Assumptions
<p><u>Specific objectives</u></p> <p><u>To Strengthened capacity of Local Community to sustainably manage their community forests in Sanggau District, West Kalimantan</u></p>	<p><u>Outcome Indicators:</u></p> <ul style="list-style-type: none"> ▪ <u>At the end of project, Local Community Capacity improved through numbers of trainings.</u> ▪ <u>At the end of project, Support to Information on Access to economic Resources improved at two village models</u> • <u>By the time project completed, Local Government support on community forest development Increased by improving capacity of relevant stakeholders through numbers of dissemination activities and numbers of training as well of workshops</u> • <u>At least one draft policy to regulate community forest availabel at the end of project.</u> 	<p>Consultant's report Project Reports</p> <p>Consultant's Report, FS Reports</p> <p>Training Program and Report List of attendants of communities</p> <p><u>Training Monitoring format</u></p> <p>Workshops report</p>	<p>Good coordination and support from other relevant sectors (<u>local government</u>, financial agencies, ministry of trade, etc).</p> <p>Sufficient trainer and facilitators available Full participations of Communities</p> <p>Draft policy recommendation implementable and followed up by legalizing the regulation</p>
<p>Output 1. Developed local community institution in term of forest managed by local community (forest farmer groups);</p>	<p><u>Output Indicator:</u></p> <ul style="list-style-type: none"> • <u>Improved community awareness on policy regulation of CF through several dissemination program</u> • <u>One package of entrepreneurship Training carried out in Sanggau</u> • <u>Technical capacity of community regarding community forest management strengthened by carrying 6 times trainings and workshops to build community's capacity on management plan and CF management technique (for instance a Five-Yearly General Plan, a yearly operation plan, marketing and monitoring)</u> 	<p>The program document for Enterpreneurship Training of the related agencies</p> <p>The Training Report of Community Enterpreneurship</p> <p>Consultant's Report</p> <p>A Community Access Document Strategy to the Financing Sources / Consultant's report</p>	

Strategy intervention	Measurable Indicators	Means of verification	Key Assumptions
<p>Output 2.</p> <p><u>"Improved social and economic information and data for sustainable development of community forestry in Sanggau"</u></p>	<p>Output Indicator:</p> <ul style="list-style-type: none"> • <u>Available Data and information especially on Economic and Social issues at 4 villages.</u> • <u>Access to the markets open to several products produced by communities at least from 2 villages/farmers group</u> • <u>Available 1 (one) information package on how community are accessed to sources of funding/financing through studies, and carried out two gathering among business entities/practitioners face to face with the funding/financial resources.</u> 	<p><u>Consultant Report</u></p> <p><u>Statistical data at village level</u></p> <p><u>Consultant reports</u></p> <p><u>Business gathering agenda</u></p> <p><u>List of participants</u></p>	<p>Available several alternative programs from financial agencies to support community forest development</p>
<p>Output 3.</p> <p>Local Government support on community forest development Improved</p>	<p>Output Indicator:</p> <ul style="list-style-type: none"> • <u>Increased local government's understanding in facing relevant community forestry regulations by conducting 3 times dissemination activities to address Community Forestry-related regulations for Sanggau Local Government.</u> • <u>The capacity of local government increased and they are able to facilitate the development of management plan and monitoring & evaluation of community forestry activities through 4 times trainings and workshops for village level</u> • <u>1 recommendation package on Local Policy CF Activities in Sanggau available</u> 	<p>List of attendance on disseminations of regulations related to HKm for Sanggau Local Government (district level)</p> <p>Training Reports Management Plan of <u>Community Forestry</u></p> <p><u>Money documents</u></p> <p>Workshop Reports</p> <p>Consultants Report Facilitators report</p> <p>Policy draft of CF activities at Sanggau</p>	<p>Full participations of local government staff at all level (district, sub district and village level)</p> <p>Full communities' participations</p>

2.2 Objectives

2.2.1 Development objective and impact indicators

To contribute to speed up the development of Community Forestry Program in Indonesia

Long Impact Indicator:

Five years after project completion, community forestry' development target as mentioned on the Ministry of Forestry's Achievement Plan could be achieved
and 20% from the target operationalized as expected

2.2.2 Specific objective and outcome indicators

To Strengthen capacity of Local Community to sustainably manage their community forests in Sanggau District, West Kalimantan

Outcome Indicators:

- At the end of project, Local Community Capacity improved through numbers of trainings.
- At the end of project, social and economic information and data for sustainable development of community forestry in Sanggau" improved at two village models
- By the time project completed, Local Government support on community forest development increased by improving capacity of relevant stakeholders through several dissemination activities and numbers of training as well of workshops (8 dissemination, 10 trainings, 4 workshops in Sanggau District)
- At least one draft policy to regulate community forest available at the end of project

PART 3 DESCRIPTION OF PROJECT INTERVENTIONS

3.1 Outputs and activities

3.1.1 Outputs

Specific Objective :

To Strengthened capacity of Local Community to sustainably manage their community forests in Sanggau District, West Kalimantan

Output 1: Developed local community institution

Activities:

- 1.2. Improve community awareness on policy regulation of CF through several dissemination program
- 1.2. Carry Out One package of entrepreneurship Training in Sanggau
- 1.4. Carry Out 6 times trainings and workshops to improve community's capacity on management plan and CF management technique (for instance a Five-Yearly General Plan, a yearly operation plan, marketing and monitoring activities)

Output 2: "Improved social and economic information and data for sustainable development of community forestry in Sanggau"

Activities:

- 2.1. Collecting Data and information especially on Economic and Social issues at 4 villages in Sanggau District
- 2.2. Analyse Access to their markets for several products produced by communities at least from 2 villages/farmers group
- 2.3. Improve farmers' capacity in knowledge and access to timber market, as well as access to micro financing services providers
 - 2.3.1 Provide 1 (one) information package on how community could access to sources of funding/financing through studies,
 - 2.3.2 Carry out two gathering among business entities/practitioners face to face with the funding/financial resources.

Output 3: Local Government support on community forest development Improved

Activities:

- 3.1. Increase local government's understanding in facing relevant community forestry regulations by conducting 3 times dissemination activities to address Community Forestry-related regulations for Sanggau Local Government.
- 3.2. Carry out 4 times trainings and workshops for village level to increase capacity of local government so that they are able to facilitate the development of management plan and monitoring & evaluation of community forestry activities
- 3.3. Formulate one package Local Policy to support CF Activities in Sanggau

3.2 Implementation approaches and methods

Matrix of Strategy and Methods

No.	Stakeholders	Functions	Delivery
1.	<u>Consultant on Data specialist, Project Management Unit, FKKM</u>	<u>To improve social and economic information and data for sustainable development of community forestry in Sanggau</u>	<u>Collect and analyze data and information to review and evaluate the relevant stakeholders involvement in CF activities.</u>
2.	<u>Project management unit, consultant (training expert, institutional expert), and communities</u>	<u>To Improve management of community Forest in Sanggau</u>	<u>Conduct stakeholder consultation /dialogue and participatory discussions with local communities, private sectors and other relevant stakeholders (local government, training institutions, NGO, etc) concerning the importance of managing forest resource in sustainable way, and involving community participation</u>
3.	<u>Project Management Unit, Institutional expert, training expert</u>	<u>To improve Local Government Support, And to develop local communities institution</u>	<u>Design the mechanism of dissemination and training needed to inform the regulation on CF to a wider stakeholders</u>
4.	<u>Training Expert/consultant, Project management Unit.</u>	<u>To improve Local Government Support, And to develop local communities institution</u>	<u>Prepare the curriculum, and materials for training based on type of stakeholders</u>
5.	<u>Training Consultant, Communities group</u>	<u>To develop local communities institution</u>	<u>Conducting Training including entrepreneurship for communities activities..</u>
6.	<u>Facilitators, Project management unit, Institutional specialist.</u>	<u>To improve local communities capacities in managing their community's forest</u>	<u>Prepare program and carry out Facilitating intensively to the group of communities on doing the best practice of forest management.</u>
7.	<u>Marketing expert/specialist, communities group.</u>	<u>To Improve farmers' capacity in knowledge and access to timber market,</u>	<u>Promote the communities forest product to market</u>
8.	<u>Marketing expert/specialist, community groups, Project Management Unit.</u>	<u>To Improve farmers' capacity in knowledge and access to micro financing services providers</u>	<u>Facilitating the community group with the funding agencies.</u>
9.	<u>Training specialist/consultants, Local government, Project Management Unit.</u>	<u>To improve capacity of Local Government.</u>	<u>Carry out training for local government</u>

3.3. WORKPLAN

NO.	Output and Activities	PIC	Year 1												Year 2											
			1	2	3	4	5	6	7	8	9	10	11	12	1	2	3	4	5	6	7	8	9	10	11	12
1.	Output 1 <u>Developed local community institution</u>																									
	Activities :																									
1.1.	<u>Improve community knowledge on policy regulation of CF through several dissemination program .</u>																									
1.1.1	<u>Conducting dissemination program on CF related regulations at 4 villages/ several groups</u>		■	■	■																					
1.2	<u>Carry Out One package of entrepreneurship Training in Sanggau</u>																									
1.2.1	<u>Preparation on training material : curricula, moduls and selecting participants</u>					■																				
1.2.2.	<u>Conducting Training for entrepreneurship 3 x</u>					■						■					■									
1.2.3	<u>Business gathering (temu usaha) (4x)</u>					■						■					■							■		
1.2.4	Produce Flyers, leaflets to promote the better information and products					■																		■		
1.3.	<u>Carry Out 6 times trainings and workshops to improve community's capacity on management plan and CF management technique (for instance a Five-Yearly General Plan, a yearly operation plan, processing and monitoring activities)</u>																									
1.3.1	<u>Preparing on training materials: curricula, moduls, selecting participants</u>						■																			
1.3.2	<u>Carry out 6 trainings for community's group</u>							■		■		■														
2.	Output 2: <u>Improved Information on Access to economic resources</u>																									
	Activities:																									
2.1.	<u>Collecting Data and information especially on Economic and Social issues at 4 villages in Sanggau District</u>		■	■																						
2.2.	<u>Analyse Access to the markets for several products produced by communities at least from 2 villages/farmers group</u>											■	■													

<u>2.3.</u>	<u>Improve farmers' capacity in knowledge and access to timber market, a well as access to micro financing services providers</u>																						
<u>2.3.1</u>	<u>Provide 1 (one) information package on how community could access to sources of funding/financing through studies</u>																						
<u>2.3.2.</u>	<u>Carry out two gathering among business entities/practitioners face to face with the funding/financial resources.</u>																						
3.	Output 3: <u>Local Government support on community forest development Imporved</u>																						
	Activities:																						
3.1.	Conducting disseminations of community's forestry - related regulations for Sanggau Local Government (90 package : 3 times @30 persons)																						
<u>3.2.</u>	<u>Carry out 4 times trainings and workshops for village level to increase capacity of local government</u>																						
<u>3.2.1</u>	<u>Preparing training materials: curricula, syllabus, selecting of participant and trainers</u>																						
<u>3.2.2</u>	Conducting training and workshop to strengthen Local Government's capacity on CF' management plan and monitoring and evaluation																						
3.3.	<u>Formulate one package Local Policy to support CF Activities in Sanggau</u>																						
<u>3.3.1</u>	<u>collecting info on existing regulation</u>																						
<u>3.3.2</u>	<u>Formulation of Local Policy Recommendation for CF Activities (through consultation meeting and FGD)</u>																						
	PSC Meeting																						
	Reporting																						
	Monitoring and evaluation of activities																						
	Financial audit																						

3.4 Budget

3.4.1 Master budget schedule

Output/Activity	Time Table	Budget Component	Inputs	Unit	Quantity		Unit Cost	ITTO Contribution			Gol Contribution			Grand Total
					ITTO			Year 1	Year 2	Total	Year 1	Year 2	Total	
					Year 1	Year 2								
1	2	3	4	5	8	9	8	9	10	11	12	13	14	15
Output 1: Developed local community institution Activity 1.1: Improve community knowledge on policy regulation of CF through several dissemination program (8x, @ 25 pax) 1.1.1: Conducting dissemination program on CF related regulations at 4 villages/several groups	M1-3, Q1	15	a . National Consultant (NC)	MM	3,00	-	1.500,00	4.500,00	-	4.500,00		-	-	4.500,00
		61	b . Meeting	package	200,00	-	50,00	10.000,00	-	10.000,00		-	-	10.000,00
		53	c . Photocopy material	package	1,00	-	500,00	500,00	-	500,00		-	-	500,00
		32	d . Domestic transport	trip	4,00	-	200,00	800,00	-	800,00		-	-	800,00
		15	e . Local transport	package	200,00	-	25,00	5.000,00	-	5.000,00		-	-	5.000,00
					-	-	-	-	-	-	-	-	-	-
Sub-total Activity 1.1.1								20.800,00	-	20.800,00	-		-	20.800,00

Activity 1.2. Carry out one package of entrepreneurship training in Sanggau 1.2.1: Preparation on training material, and selecting participants	M4, Q1	15	a	National Consultant (NC)	MM	1,00	-	1.500,00	1.500,00	-	1.500,00	-	-	-	1.500,00
			.												
		61	b	Meeting (2x,@ 20)	package	40,00	-	30,00	1.200,00	-	1.200,00	-	-	-	1.200,00
Sub total Activity 1.2.1									2.700,00	-	2.700,00	-	-	-	2.700,00
1.2.2: Conducting Training for entrepreneurship (3x)	Q2,Q4 ,Y1	15	a	Training package (3 times, 25 persons)	package	50,00	25,00	50,00	2.500,00	1.250,00	3.750,00	-	-	-	3.750,00
			.												
		15	b	National Consultant (NC)	MM	3,00	1,00	1.000,00	3.000,00	1.000,00	4.000,00	-	-	-	4.000,00
	Q2,,Y2		.												
Sub-total Activity 1.2.2									5.500,00	2.250,00	7.750,00	-	-	-	7.750,00
1.2.3: Produce flyers, leaflets to promote the better information and products	M4,Q 2, Y1	67	a	Layout and reproduction	package	1,00	1,00	1.000,00	1.000,00	1.000,00	2.000,00	500,00	500,00	1.000,00	3.000,00
			.												
	M5,Q 2,Y2		.				-	-	-	-	-	-	-	-	-
Sub-total Activity 1.2.3									1.000,00	1.000,00	2.000,00	500,00	500,00	1.000,00	3.000,00

1.2.4. Business gathering 4 times	Q2,Q4 , Y1; Q2,Q4 Y2	61	a	Preparation meeting (4x,@ 25 persons)	package	50,00	50,00	30,00	1.500,00	1.500,00	3.000,00	500,00	500,00	1.000,00	4.000,00
			b	Display promotion area	package	2,00	2,00	5.000,00	10.000,00	10.000,00	20.000,00	1.000,00	1.000,00	2.000,00	22.000,00
			c	Workshop package (4 times, 50 persons)	package	100,00	100,00	80,00	8.000,00	8.000,00	16.000,00	1.000,00	1.000,00	2.000,00	18.000,00
Sub total Activity 1.2.4									19.500,00	19.500,00	39.000,00	2.500,00	2.500,00	5.000,00	44.000,00
Total Ouput 1.2									28.700,00	22.750,00	51.450,00	3.000,00	3.000,00	6.000,00	57.450,00
Activity 1.3. Carry Out 6 times trainibng & workshops to improve community's capacity 1.3.1:Preparing Training materials: curricula, moduls, & selecting participants	M6, Q2, Y1	15	a	Training consultant	MM	1,00	-	1.000,00	1.000,00	-	1.000,00	-	-	-	1.000,00
			b	Preparation meeting (2x,@ 20 persons)	package	40,00	-	30,00	1.200,00	-	1.200,00	100,00	100,00	200,00	1.400,00
Sub total Activity 1.3.1									2.200,00	-	2.200,00	100,00	100,00	200,00	2.400,00
1.3.2: Carry out 6 trainings for communy's group	Q3.Q4 , Y1	15	a	Training Consultant	MM	3,00	-	1.000,00	3.000,00	-	3.000,00	-	-	-	3.000,00
			b	Training Package (6x, @ 25 persons, 3 days)	package	450,00	-	80,00	36.000,00	-	36.000,00	-	-	-	36.000,00
			c	Photocopy material	package	6,00	-	200,00	1.200,00	-	1.200,00	50,00	50,00	100,00	1.300,00
Sub-total Activity 1.3.2									40.200,00	-	40.200,00	50,00	50,00	100,00	40.300,00
Total Ouput 1.3									42.400,00	-	42.400,00	150,00	150,00	300,00	42.700,00
Total Output 1									91.900,00	22.750,00	114.650,00	3.150,00	3.150,00	6.300,00	120.950,00

Output 2. Improved Information on Access to economic resources 2.1.: Collecting Data and information (data Economic and Social issues) at 4 villages in Sanggau District	Q1, Y1	15	a	National Consultant (NC)	MM	2,00	-	1.500,00	3.000,00	-	3.000,00	-	-	-	3.000,00	
			31	b	DSA, NC (4 x@7 days)	MD	21,00	-	80,00	1.680,00	-	1.680,00	-	-	-	1.680,00
			61	c	Meeting (2 times, 25 person)	package	50,00	-	30,00	1.500,00	-	1.500,00	100,00	100,00	200,00	1.700,00
Sub-total Activity 2.1								6.180,00	-	6.180,00	100,00	100,00	200,00	6.380,00		
2.2.: Analyse access to the markets for several products produced by communities	Q4,Y1	15	a	National Consultant (NC)	MM	2,00	-	1.500,00	3.000,00	-	3.000,00	-	-	-	3.000,00	
			b	Meetings (2 times, @ 25 persons)	package	50,00	-	30,00	1.500,00	-	1.500,00	100,00	100,00	200,00	1.700,00	
Sub-total Activity 2.2.								4.500,00	-	4.500,00	100,00	100,00	200,00	4.700,00		
2.3.: Improve farmers' capacity in knowledge & access to timber market, as well access to micro financing service providers 2.3.1. Provide one information package on how to access source of funding	Q1, Y2	15	a	National Consultant (NC)	MM		2,00	1.500,00	-	3.000,00	3.000,00	-	-	-	3.000,00	
			32	b	Local transport	trip	-	4,00	300,00	1.200,00	-	1.200,00	-	1.200,00	1.200,00	2.400,00
Sub-total Activity 2.3.1								1.200,00	3.000,00	4.200,00	-	1.200,00	1.200,00	5.400,00		

2.3.2.: Carry out two gathering among business entities/pratinioners face to face with the micro finance service providers	Q2, Y2	61	a .	Preparation meeting (2 times, 25 persons)	package	-	50,00	30,00	-	1.500,00	1.500,00	200,00	200,00	400,00	1.900,00
		61	b .	Business Meeting with financial resources (2 times, 75 persons)	package	-	150,00	30,00	-	4.500,00	4.500,00	200,00	200,00	400,00	4.900,00
			c .	Local transport	package	-	150,00	30,00	-	4.500,00	4.500,00	-	-	-	4.500,00
Sub-total Activity 2.3.2									-	10.500,00	10.500,00	400,00	400,00	800,00	11.300,00
Sub total activity 2.3.									1.200,00	13.500,00	14.700,00	400,00	1.600,00	2.000,00	16.700,00
Sub total output 2									11.880,00	13.500,00	25.380,00	600,00	1.800,00	2.400,00	27.780,00
Output 3. Local Government support on community forest development improved															
3.1.Carry Out dissemination of community's regulation for Sanggau Local Governemnt	M1-M3,	16	b .	Facilitator	person	3,00	-	500,00	1.500,00	-	1.500,00	-	-	-	1.500,00
	Q1, Y1	17	c .	Resources Person	person	6,00	-	300,00	1.800,00	-	1.800,00	-	-	-	1.800,00
		65	d .	Meeting package (3x; @ 30 persons)	package	90,00	-	80,00	7.200,00	-	7.200,00	300,00	-	300,00	7.500,00
			e .	Photocopy material	package	3,00	-	100,00	300,00	-	300,00	50,00	-	50,00	350,00
Sub total Activity 3.1.									10.800,00	-	10.800,00	350,00	-	350,00	11.150,00

		15.	a	Training consultant	MM	2,00	-	1.500,00	3.000,00	-	3.000,00	-	-	-	3.000,00
3.2: Carry out 4 times trainings and workshops for village level	M5-M6, Q1		b	Training Package (4x; @25 persons,3 days)	package	300,00	-	80,00	24.000,00	-	24.000,00	400,00	400,00	800,00	24.800,00
	Y1		c	Local transport	package	300,00	-	50,00	15.000,00	-	15.000,00	-	-	-	15.000,00
			d	Photocopy material	package	4,00	-	100,00	400,00	-	400,00	50,00	50,00	100,00	500,00
Sub total Activity 3.2.									42.400,00	-	42.400,00	450,00	450,00	900,00	43.300,00
3.3. Formulate one package local policy to support CF Activities in Sanggau 3.3.1. Collecting info on existing regulation	M1, M2 Q1, Y1	18	a	National Consultant (NC)	MM	2,00	-	1.500,00	3.000,00	-	3.000,00	-	-	-	3.000,00
		32		Meeting package (2x,@25 persons)	package	50,00	-	30,00	1.500,00	-	1.500,00	150,00	150,00	300,00	1.800,00
		32		Domestic transport	trip	4,00	-	300,00	120,00	-	120,00	-	-	-	120,00
		31		DSA	MD	20,00	-	80,00	1.600,00	-	1.600,00	-	-	-	1.600,00
		53		Photocopy	package	4,00	-	100,00	400,00	-	400,00	50,00	50,00	100,00	500,00
Sub-total Activity 3.3.1									6.620,00	-	6.620,00	200,00	200,00	400,00	7.020,00

	Q2, Y2	19	a	National Consultant	MM	4,00	4,00	1.500,00	6.000,00	6.000,00	12.000,00	-	-	-	12.000,00
3.3.2: Formulation of Local Policy Recommendaton for CF Activities		31	b	Facilitator	MD	2,00	2,00	500,00	1.000,00	1.000,00	2.000,00	-	-	-	2.000,00
		63	c	FGD (8x, @25 persons)	package	100,00	100,00	60,00	6.000,00	6.000,00	12.000,00	400,00	400,00	800,00	12.800,00
		32	d	local transport	package	100,00	100,00	30,00	3.000,00	3.000,00	6.000,00	-	-	-	6.000,00
		53	e	Photocopy	package	4,00	4,00	200,00	800,00	800,00	1.600,00	250,00	250,00	500,00	2.100,00
			f	Big Workshop (2x; @ 75 persons)	package	75,00	75,00	80,00	6.000,00	6.000,00	12.000,00	750,00	750,00	1.500,00	13.500,00
Sub-total Activity 3.3.2.									22.800,00	22.800,00	45.600,00	1.400,00	1.400,00	2.800,00	48.400,00
Sub-total Activity 3.3.									29.420,00	22.800,00	52.220,00	1.600,00	1.600,00		
Total Output 3									82.620,00	22.800,00	105.420,00	2.400,00	2.050,00	4.450,00	109.870,00
Total Budget for Output 1,2,3									186.400,00	59.050,00	245.450,00	6.150,00	7.000,00	13.150,00	258.600,00

<u>Non-activity based</u>	Q1-Q4, Y1	11	a	Project Coordinator (PC)	MM	12,00	12,00	2.000,00	24.000,00	24.000,00	48.000,00	-	-	-	48.000,00
	Q1-Q4, Y2	12	b	Secretary (2persons)	MM	12,00	12,00	600,00	7.200,00	7.200,00	14.400,00	-	-	-	14.400,00
		13	c	Finance (2persons)	MM	12,00	12,00	600,00	7.200,00	7.200,00	14.400,00	-	-	-	14.400,00
		14	d	Field Coordinator	MM	12,00	12,00	1.000,00	12.000,00	12.000,00	24.000,00	-	-	-	24.000,00
		41	e	Personal Computer	unit	2,00	-	600,00	1.200,00	-	1.200,00	1.200,00	-	1.200,00	2.400,00
		42	f	Laptop	unit	1,00	-	1.000,00	1.000,00	-	1.000,00	1.000,00	-	1.000,00	2.000,00
		43	h	Printer/fax machines	unit	2,00	-	150,00	300,00	-	300,00	300,00	-	300,00	600,00
		44	i	LCD Projector	unit	1,00	-	600,00	600,00	-	600,00	600,00	-	600,00	1.200,00
		45	j	Video Camera	unit	1,00	-	1.200,00	1.200,00	-	1.200,00	-	-	-	1.200,00
		51	k	Office Supplies (2site)	month	12,00	12,00	100,00	2.400,00	2.400,00	4.800,00	1.200,00	1.200,00	2.400,00	7.200,00
		68	l	project preparation	package	1,00	-	5.000,00	5.000,00	-	5.000,00	5.000,00	-	5.000,00	10.000,00
		52	m	phone/communication (2sites)	month	12,00	12,00	100,00	1.200,00	1.200,00	2.400,00	1.200,00	1.200,00	2.400,00	4.800,00
		70	n	Publication/report reproduction	month	12,00	12,00	100,00	1.200,00	1.200,00	2.400,00	1.200,00	1.200,00	2.400,00	4.800,00

		65	o	Distribution and dissemination	package	-	1,00	2.000,00	-	2.000,00	2.000,00	-	2.000,00	2.000,00	4.000,00
		69	p	PSC Meeting	times	1,00	2,00	1.000,00	1.000,00	2.000,00	3.000,00	1.000,00	1.000,00	2.000,00	5.000,00
		32	q	Duty travel for money	trip	6,00	6,00	800,00	4.800,00	4.800,00	9.600,00	4.800,00	4.800,00	9.600,00	19.200,00
		64	r	Financial Audit	times	1,00	2,00	2.000,00	2.000,00	4.000,00	6.000,00	1.000,00	2.000,00	3.000,00	9.000,00
			s	office space	year	1,00	1,00	5.000,00	-	-	-	5.000,00	5.000,00	10.000,00	10.000,00
				Total Non-activity based					72.300,00	68.000,00	140.300,00	23.500,00	18.400,00	41.900,00	182.200,00
				Grand Total Project Costs					258.700,00	127.050,00	385.750,00	29.650,00	25.400,00	55.050,00	440.800,00
				ITTO Monitoring and Review							12.000,00				12.000,00
				ITTO Ex-post Evaluation							10.000,00				10.000,00
				ITTO Programme Support (12%)							48.930,00			-	48.930,00
				Mnagement cost							456.680,00				511.730,00

3.4.2 Consolidated Budget

Category	Description	Total	Year 1	Year 2
10	Personnel			
11	Project Coordinator	48.000,00	24.000,00	24.000,00
12	Secretary	14.400,00	7.200,00	7.200,00
13	Finance	14.400,00	7.200,00	7.200,00
14	Field Coordinator	24.000,00	12.000,00	12.000,00
15	National Consultant	31.000,00	21.000,00	10.000,00
16	Facilitator	3.500,00	2.500,00	1.000,00
17	Resources Person	1.800,00	1.800,00	-
18	Training Consultant	10.000,00	10.000,00	-
19	Sub total	147.100,00	85.700,00	61.400,00
20	Sub contracts			
21	Sub-contract - Workshop	31.500,00	15.750,00	15.750,00
29	Sub total	31.500,00	15.750,00	15.750,00
30	Duty Travel			
31	Daily Subsistance Allowance	3.280,00	3.280,00	-
32	Domestic ticket	20.120,00	10.520,00	9.600,00
33	Local Transport	32.900,00	24.200,00	8.700,00
39	Sub total	56.300,00	38.000,00	18.300,00
40	Capital Items			
41	Personal Computer	2.400,00	2.400,00	-
42	Laptop	2.000,00	2.000,00	-
43	Printer/fax machine	600,00	600,00	-
44	LCD Projector	1.200,00	1.200,00	-
45	Video camera	1.200,00	1.200,00	-
49	Sub total	7.400,00	7.400,00	-
50	Consumables items			
51	Office supplies	7.200,00	3.600,00	3.600,00
52	phone/communications	4.800,00	2.400,00	2.400,00
53	Photocopy	5.250,00	4.050,00	1.200,00
59	Sub total	17.250,00	10.050,00	7.200,00

60	Miscellaneous			
61	Meeting	31.200,00	27.050,00	4.150,00
62	FGD	12.800,00	6.400,00	6.400,00
62a	Business meeting (Workshop)	4.900,00	200,00	4.700,00
63	Training	64.550,00	62.900,00	1.650,00
64	Finance audit	9.000,00	3.000,00	6.000,00
65	Distribution and dessimination	4.000,00	-	4.000,00
66	display area	22.000,00	11.000,00	11.000,00
67	layout and reproduction	3.000,00	1.500,00	1.500,00
68	project preparataion	10.000,00	10.000,00	-
69	PSC Meeting	5.000,00	2.000,00	3.000,00
70	Publication and reproduction	4.800,00	2.400,00	2.400,00
	office space	10.000,00	5.000,00	5.000,00
69	Sub total	181.250,00	131.450,00	49.800,00
70	Total Project	440.800,00	288.350,00	152.450,00
80	National management cost	-	(See executing agency budget)	
90	Project monitoring and administration			
91	ITTO monitoring & review	12.000,00		
92	ITTO ex-post evaluation	10.000,00		
95	ITTO Programme support	48.930,00		
100	Total Project Monitoring and Administration	70.930,00		
	GRAND TOTAL (70 + 100)	511.730,00		

3.4.3. ITTO YEARLY BUDGET BY COMPONENT

Description	Total	Year 1	Year 2
Personnel			
Project Coordinator	48.000,00	24.000,00	24.000,00
Secretary	14.400,00	7.200,00	7.200,00
Finance	14.400,00	7.200,00	7.200,00
Field Coordinator	24.000,00	12.000,00	12.000,00
National Consultant	31.000,00	21.000,00	10.000,00
Facilitator	3.500,00	2.500,00	1.000,00
Resources Person	1.800,00	1.800,00	
Training Consultant	10.000,00	10.000,00	
Sub total	147.100,00	85.700,00	61.400,00
Sub contracts			
Sub-contract - Workshop	28.000,00	14.000,00	14.000,00
Sub total	28.000,00	14.000,00	14.000,00
Duty Travel			
Daily Subsistance Allowance	3.280,00	3.280,00	-
Domestic ticket	10.520,00	5.720,00	4.800,00
Local Transport	31.700,00	24.200,00	7.500,00
Sub total	45.500,00	32.200,00	12,300,00
Capital Items			
Personal Computer	1.200,00	1.200,00	-
Laptop	1.000,00	1.000,00	-
Printer/fax machine	300,00	300,00	-
LCD Projector	600,00	600,00	-
Video camera	1.200,00	1.200,00	-
Sub total	4.300,00	4.300,00	-
Consumables items			
Office supplies	4.800,00	2.400,00	2.400,00
phone/communications	2.400,00	1.200,00	1.200,00
Photocopy	4.400	3.600,00	800,00
Sub total	11.600,00	7.200,00	4.400,00

Miscellaneous			
Meeting	28.600,00	25.600,00	3.000,00
FGD	12.000,00	6.000,00	6.000,00
Business meeting (Workshop)	4.500,00	-	4.500,00
Training	63.750,00	62.500,00	1.250,00
Finance audit	6.000,00	2.000,00	4.000,00
Distribution and dissemination	2.000,00	-	2.000,00
display area	20.000,00	10.000,00	10.000,00
layout and reproduction	2.000,00	1.000,00	1.000,00
project preparation	5.000,00	5.000,00	-
PSC Meeting	3.000,00	1.000,00	2.000,00
Publication and reproduction	2.400,00	1.200,00	1.200,00
Sub total	149.250,00	114.300,00	34.950,00
Total Project	385.750,00	258.700,00	127.050,00
National management cost	-	(See executing agency budget)	
Project monitoring and administration			
ITTO monitoring & review	12.000,00		
ITTO ex-post evaluation	10.000,00		
ITTO Programme support (70 + 91 +92) x 12%	48.930,00		
Total Project Monitoring and Administration	70.930,00		
GRAND TOTAL (70 + 100)	456.680,00		

3.4.4 Executing Agency Yearly Budget (Gol)

Category	Description	Total	Year 1	Year 2
10	Personnel			
19	Sub total	-	-	-
20	Sub contracts			
21	Sub-contract - Workshop			
		3.500,00	1.750,00	1.750,00
29	Sub total	3.500,00	1.750,00	1.750,00
30	Duty Travel			
31	Daily Subsistance Allowance	-	-	-
32	Domestic ticket	9.600,00	4.800,00	4.800,00
33	Local Transport	1.200,00	-	1.200,00
39	Sub total	10.800,00	4.800,00	6.000,00
40	Capital Items			
41	Personal Computer	1.200,00	1.200,00	-
42	Laptop	1.000,00	1.000,00	-
43	Printer/fax machine	300,00	300,00	-
44	LCD Projector	600,00	600,00	-
49	Sub total	3.100,00	3.100,00	-
50	Consumables items			
51	Office supplies	2.400,00	1.200,00	1.200,00
52	phone/communications	2.400,00	1.200,00	1.200,00
53	Photocopy	850,00	450,00	400,00
59	Sub total	5.650,00	2.850,00	2.800,00
60	Miscellaneous			
61	Meeting	2.600,00	1.450,00	1.150,00
62	FGD	800,00	400,00	400,00
62a	Business meeting (Workshop)	400,00	200,00	200,00
63	Training	800,00	400,00	400,00
64	Finance audit	3.000,00	1.000,00	2.000,00
65	Distribution and dessimation	2.000,00	-	2.000,00
66	display area	2.000,00	1.000,00	1.000,00
67	layout and reproduction	1.000,00	500,00	500,00
68	project preparataion	5.000,00	5.000,00	-
69	PSC Meeting	2.000,00	1.000,00	1.000,00
70	Publication and reproduction	2.400,00	1.200,00	1.200,00
	office space	10.000,00	5.000,00	5.000,00
69	Sub total	32.000,00	17.150,00	14.850,00
70	Total Project	55.050,00	29.650,00	25.400,00

3.5 Assumptions, risks, sustainability.

3.5.1 Assumptions and risks

The potential risk associated with the project that likely will affect its implementation and its mitigation actions are as follows :

Potential Risk	Mitigation Actions
<u>Local Government Regulation do not support the community forestry development policy.</u>	<u>To minimize that risk, this planning process will be discussed and consulted with local government at the province and districts level even sub district and active contact their direct engagement in the HKM activities in Sanggau district. In drafting the local regulation by the project, the Puspajak will always consult the Local Government and other stakeholders</u>
<u>Sanggau Local Government issuing other licence which is against the Community' Licence such as license of local mining</u>	<u>Deep consultation and intensive meeting will be carried out at the planning stage, so all stakeholders including District local government will informed about the project activities.</u>
<u>Lack support from other relevant sectors (local government, financial agencies, ministry of trade, etc).</u>	<u>At the planning stage, all the related stakeholders will be consulted and involved in discussions.</u>
<u>In-sufficient trainer and facilitators available at the same time of training activities</u>	<u>To mitigate this risk, good preparation and make available list of trainer will be done.</u>
<u>Communities reluctant to participate in such training or extension activities</u>	<u>The project will approach community's leader explaining project benefits and the importance of participating in the project activities.</u>
<u>Another risk associated with conflict of interest between the local government and local communities</u>	<u>Past experiences showed that intensive approach had been successful in mitigating that risk through (a) Approach and communication with relevant parties to improve awareness of sustainable community based forest management (b) Enforcement of regulation (c) Establish tailor made empowerment program which involve/consult related communities in the planning process (d) Strengthening enforcement of boundaries.</u>

3.5.2 Sustainability

To ensure the sustainability community forestry programme that has been initiated by this project, several approach will be developed. The following key success factors have been identified and possible to replicate :

1. Participatory planning and implementation activities of this project.
2. Developing commitments of implementing community forest as a long-term programme, at least 35 years license period and it should be clarified since the project design phase.
3. Baseline information on the resources and socio-economic conditions should be measured in the project design phase, to allow assessment of impact
4. The critical elements in CF is developing institution of community through empowering and learning.
5. Developing mechanism, procedur and job description to support local and national government office to carry out their task on public services of community forestry.
6. Empowering capacity of key stakeholders by series training and extension activities.
7. Incentives should be designed to provide tangible benefits for the population during the whole cycle of the operation (include during the project period).

Another step is to scale up this similar program and activities to the other HKm group in the other provinces. Ten years after project completion the community living at and around the forest areas could have similar accessed and rights of forest products throughout Indonesian.

Before project completed, the Project will also encourage an increase allocation budget for community forestry activities in the Budget line at District of West Kalimantan. In 2013 the budget allocated for the facilitation of the District Community Forest is only 150 million rupiah per year, for Forest Plantation is 100 million. While funding for the rehabilitation of forest land and the Ministry of Forestry through BPDAS is 1.1 billion. In addition, financing to the People's Garden Seeds (KBR scheme) are for 14 units where 1 unit KBR gets financing 50 million bringing the total funds in the District for KBR are 700 million rupiah. With the Constitutional Court Decision 35/2012, the District of Sanggau plans to conduct an inventory of Indigenous Forests with funding from the local budget. It is expected There are synergies between the community forestry activities and this project so that post-project sustainability can be done.

PART 4 IMPLEMENTATION ARRANGEMENTS

4.1 Organization structure and stakeholder involvement mechanisms

4.1.1 Executing Agency and Partners

The Executing Agency of the project is The Forest Research and Development Agency (FORDA) of The Ministry of Forestry, in particular The Center for Climate Change and Policy Research, (*Pusat Penelitian dan Pengembangan Perubahan Iklim dan Kebijakan [Puspijak]*).

The Research Center of Puspijak has the mandate to provide scientific-bases for policy making. By using action research and policy assessments, the Center facilitates policy dialogues among stakeholders and contributes in improving regulations toward more operational policy. The recent Decision from Constitutional Court No 35/2012 has put the role of Puspijak more essentially in facilitating the current status of legal vacuum concerning Customary Forests or *Hutan Adat* to attain formal recognition from the government. Puspijak has experiences and capacities to facilitate policy dialogues that involve multi-partners and multi-stakeholders in formulating regulation that support local communities in managing hutan adat.

Puspijak is supported by 40 professional researchers with multidisciplinary background and Phd/MSc levels of education, among others are sociologists, natural resources economists, forest management, statisticians, and policy analysts. Locations of the research covers the whole country, among the 58 of research stations socalled KHDTK, one is located at the neighbourhood of Sanggau. In conducting the research, Puspijak gets support from global institutions among others with the World Bank, ACIAR of Australia, ITTO, and it also collaborates with national and local NGOs beside collaborating with other research institutions. At the field, Puspijak makes closed contact with local government, community, academici and also private entities and it involve actively in policy-making processes.

The Puspijak will coordinate the overall project activities and be responsible to the funding agency, ITTO. In running the project, Puspijak will work jointly with FKKM –Indonesian Communication Forum of Community Forestry to be acting as a Collaborating/Implementing Agency. FKKM will manage activities jointly with partners in local and national level upon guidance of Puspijak. Partners within the project will comprise of community groups, local NGOs, Local Government, local private sector and the unit of technical implementation of the Ministry of Forestry in the area of the project and competent consultants to also participate in implementing the project activities.

FGLG (Forest Governance Learning Group) is an independent group that assisst to prepare this project proposal.

4.1.2 Project management team

The project coordinator will have a task to coordinate **with all stakeholders mentioned in the stakeholder analysis** on overall project cycle activities. The Project coordiinator will be responsible to the Collaborating Agency and Executing Agency in consultation with the Steering Committee and ITTO. The project coordinator will be assisted by personnel of finance/administrative affairs and field coordinator. The field coordinator will be responsible to the implementation of field project assisted by numbers of facilitators, a secretary and one field level administration. The project coordinator will coordinate with Sanggau District Forestry and Estate for synergy programme and activity..

The consultant(s)/Experts will be hired will require the following knowledge:

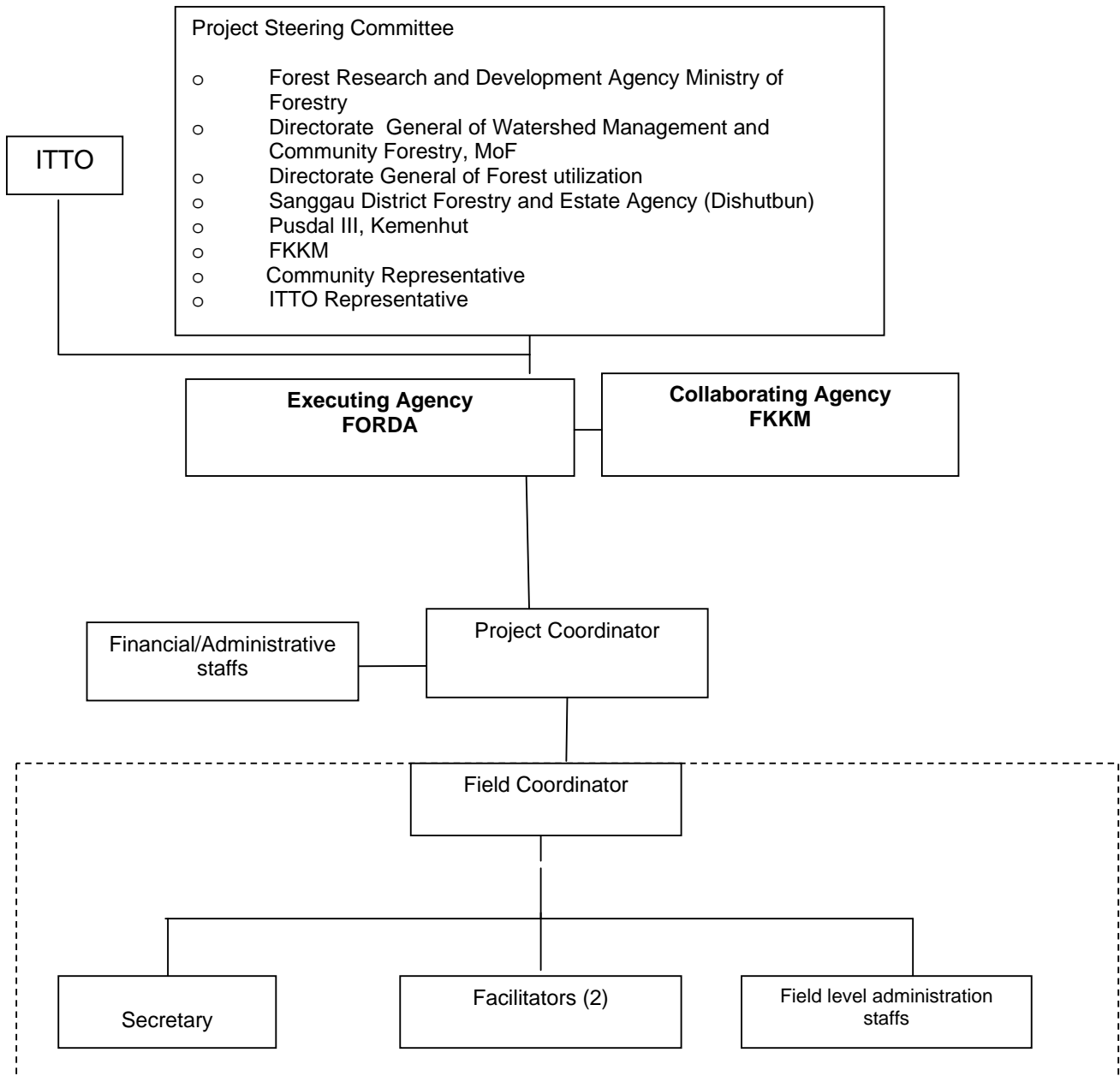
1. Marketing and economics
2. Institutional and policy expert
3. Training expert

Local government is involved as a Project Steering Committee member, and they have role to:

- **Facilitating of communities regulation**
- **Involve in dissemination and training activities**
- **Monitor and evaluate the activities in the field**

The management structure of the project is presented on the following diagram :

Organization structure of Project Management Unit



4.1.3 Project steering committee

The Project Steering Committee (PSC) consists of policy makers, academics, communities representatives appointed by the Minister of Forestry, ITTO Representative and Donors Representative. The duties of PSC are: (a) approve program and budgets of the various activities within the framework of the project approved by ITTO (b) conduct annual reviews and evaluation of the project implementation (c) approve progress report before submission to ITTO and GOI. The PSC will be chaired by the Forestry Research and Development Agency (FORDA), MoF.

4.1.4 Stakeholder involvement mechanisms

Detailed arrangement of key stakeholders in this project is set out as follows:

(a) The role of PUSPIJAK FORDA & FKMM

- Maintain coordination among relevant parties in implementing project objective and activities
- Coordinate and consult with ITTO upon project development
- Execution of project activities in close cooperation with Collaborating Agency (FKKM)
- Together with Collaborating Agency (FKKM) manage project fund based on project proposal and approval by ITTO and project agreement in accordance with ITTO guidelines and procedures as well as prevailing government regulations
- Provision of counter budget of GOI to support project activities together with EA included appointment of personnel to work in the project
- Prepare and submit project report to ITTO
- FKMM will also coordinate key stakeholders project to support project objective

In the Executing the project activities, Puspjiak will make a MOU with FKMM as an implementing institution, mentioning role and responsibilities of each parties.

(b) The role of local communities :

- Participation in the process of developing strategy
- Involve in training activities and other capacity building program.

(c) The role of local government:

- Facilitating of communities regulation
- Involve in sozialisation and training activities
- Monitor and evaluate the activities in the field

(d) The role of FGLG

- Assist in preparing the project formulation
- Involve in the forest governance Issues
- Mainstreaming the project learning after project completed.

Stakeholders involvement mechanism will be built since the begining of project design.

4.2 Reporting, review, monitoring and evaluation

4.2.1 Project Progress Report.

The first project progress report will be given to ITTO 6 months after project start-up or at least 4 months before the date of the monitoring visit (or Steering Committee meeting) and 2 months before every Council Session. **Next Project Progres report for the 2nd and 3rd will be submitted every six-month**

4.2.2 Project Completion Report

This will be submitted within three months after Project Completion.

4.2.3 Project Technical Reports.

Project Technical Reports will be prepared for activities where technical results are expected, i.e. achievements of Project Outputs.

4.2.4 Monitoring, Review and Steering Committee's Visits.

A Steering Committee will be established, to be appointed by the Minister of Forestry upon proposal from the Executing Agency. The Steering Committee meeting will be held annually or as necessary. ITTO monitoring visits, if considered still necessary, will be arranged after the achievement of the respective outputs according to the Workplan.

4.2.5 Evaluation

Evaluation will be conducted during the last quarter before completion of the Project.

4.3 Dissemination and mainstreaming of project learning

4.3.1 Dissemination of project results

The results of the project will be disseminated through various strategy such as public consultation, workshop, internet, documents dissemination, and writing article in the ITTO newsletter.

Public Consultation will be done at the district level, as well as workshop. Furthermore, for dissemination to the wider public such a national workshops will also be held at the provincial level. Documenting of dissemination will also be conducted at the national level, supported by internet technology to expand its distribution.

Field site visit will be conducted between projects in the community and to other regions, districts or provinces that support their lessons.

Target audience include policy makers at national, provincial and local levels, community/forest farmers group, private companies, NGOs with attendance 20-30 persons for every meeting.

4.3.2 Mainstreaming project learning

This project is expected to give lessons-learned for developing a community forest scheme, entrepreneurship, tenurial and poverty reduction to the other communities group.

FKKM and FGLG as the learning group organization of several stakeholders will facilitate this dissemination and mainstreaming learning process with its various media: publications, stakeholder meetings, share learning, etc.

Project Outcome will be communicated to the policy makers and be followed up (inter alia through series of policy dialogues) to be a national policy that being adopted in local level and be as guideline for field implementation.

ANNEX 1 PROFILES OF THE EXECUTING AGENCY

Regional research Center (RRC), Forestry Research and Development Agency (FORDA), a subsidiary body of the Ministry of Forestry will be conducting the project as Executing Agency. FORDA is the holder of scientific authority on forestry, and therefore responsible for the availability of scientific information and technologies to be used for the basis for decision making as well as for practical uses.

Some of FORDA missions are:

1. To conduct research and development to secure forest resource base
2. To provide scientific basis for developing techniques and guidelines to secure and to promote recovery of habitat and ecosystem function as a whole including conservation of whole forest.
3. To provide information, data and assessment for policy making

FORDA is supported by 4 (four) Research and Development Centres located in Bogor which will directly and indirectly involve in the execution of the proposed project. One of the centres is PUSPIJAK or Center for Climate Change Research and Policy Development.

A. Profile of the Executing Agency

INFRASTRUCTURE

The Center of Climate Change Research and Policy Development is a transformation result from the Center of Forestry Socio-Economic Research and Policy (Puslitsosek). This institution transformation is an answer to face the issue within national and global level which address climate change and its impact to human life in a variety sector including forestry sector.

As a consequence of an institution transformation from the Center of Socio-Economic Research and Forestry Policy(Puslitsosek), to become The Center of Climate Change Research, and Policy Development, however the scope of research and development activities is wider than before. Beside addressing the study and research on social, economic and policy of forestry aspects and also to address the study and research on climate change in forestry sector. In viewing the issue of mitigation and adaptation, however the climate change evolves very dynamic both in the context of knowledge and technology. Hence the products of study and research of climate change shall be distributed immediately to the civil society.

In running its function being a research and development institution, Puspajak made a number of research activities and research products distribution through a variety of media. The media of sharing includes seminar, technology and exhibition outlook, science publications which are packaged in books and journals and guidance.

Since year 2010, PUSPIJAK focuses its research program leading to a forestry lanscape management, urban forest development, economic and policy of emission reduction from deforestation and forest degradation, development of green house gas emission/forestry measurement, bioecology and community socio cultural economic adaptation in facing the climate change, strengthening forestry governance and strengthening industrial governance and forest products trade.

In developing the network, PUSPIJAK works widely crafting the collaborations with international level institutions and national level. Partnership with foreign agencies such as with FCPF project with the World Bank, Community-based Forest Management together with ACIAR/Australia, jointly with the Government of Japan and ITTO in a project of strengthening the National Park management based on REDD+ in Meru Betiri, East Java and ITTO Project addresses REDD+ Feasibility Study for Billateral Carbon Offset in Central Kalimantan.

BUDGET

In 2013 budget fiscal, PUSPIJAK manages the funds more than 15 billions rupiahs, where half of them are allocated from the State Budget and Income Allocation and the remaining are from collaboration funds.

PERSONNEL

As a research and development institution, PUSPIJAK is led by a Doctor. The leader coordinates with research staffs and administration personnel. It is around 40 administration staffers aimed to facilitate in running an effective and efficient research activities and dissemination. From those 30 research staffs, at

PUSPIJAK, 5 personnel are doctorate graduation, and other 15 personnel received master degrees and the remaining are bachelor degree.

The Forest Governance Learning Group is an informal alliance of in-country groups and international partners currently active in eight African and three Asian countries including Indonesia. FGLG Indonesia aim as a leverage to improve governance of natural resource (forestry) in Indonesia. The FGLG Indonesia is working together with Ministry of forestry to support the good forest governance.

The overall aim of the FGLG in Indonesia is to support key actors to implement good forest governance at organisational, community, district and national levels. In general terms, the FGLG aims to:

- Exchange and spread learning about workable approaches to good forest governance
- Make measurable progress in improving practice within government and in relationships among other actors (other government departments, local government, private sector, NGOs)
- Build long-term capacity of leaders to tackle rapid change, complexity and uncertainties in the forestry sector
- Provide materials, tools, and guidance on implementing good forest governance

Earlier phases of the FGLG in Indonesia have concentrated on 'change from within': building the capacity of members, particularly mid-level professionals within the Ministry of Forestry, to tackle forest governance by providing a safe space for discussion of politically contentious forestry issues and a series of focused training and action events. These events have included workshops on institutional change within the Ministry of Forestry and the forestry sector, on approaches to change in governance, on conflict management, on writing to produce articles for the popular press, and on creative communications beyond written media. Members of the FGLG have applied these lessons in their own spheres of work in forestry within the Ministry (formulation of workable policy and governance) and on the ground in the districts (actual implementation of policy and governance).

Forum Komunikasi Kehutanan Masyarakat (FKKM) ***Indonesian Communication Forum on Community Forestry***

FKKM (*Forum Komunikasi Kehutanan Masyarakat* or Indonesian Communication Forum on Community Forestry) was established on 24 September 1997, as a joint initiative of related parties (multistakeholders) held at the Faculty of Forestry, University of Gadjah Mada, Yogyakarta. The organization was established as a forum for the exchange of information on issues of community forestry and forest policy in Indonesia. It is hoped that the organisation can help formulate ideas, programs, and move toward the development of community forestry in Indonesia.

Since its establishment in 1997, the organization has grown and is known as a forum for multi-stakeholder dialogue and shared learning about community forestry. It has been spreading information, concept development, an developing capacity building and policy formulation. FKKM has 12 networks in different provinces, among others are Riau, Jambi, Sumatera Barat, Lampung, Jawa Barat, Jawa Timur, Jawa Tengah, Nusa Tenggara Barat, Nusa Tenggara Timur, Kalimantan Barat, Sulawesi Tenggara, Sulawesi Tengah, Sulawesi Selatan, and Kalimantan Selatan.

Vision

We believe that the worldview of community forest management should be based on a system of forest resources by the people through community organizations which is based on the principles of fairness, transparency, accountability, and sustainability aspects of the ecological, economic and socio-cultural.

Mission

We serve as a locomotive towards community forestry perspective in Indonesia. We support institutional development of the community forestry through the dissemination of information, concept development, capacity building and policy formulation concerning the community forestry development.

Recent Achievements

Forest management scheme with the typology of KM has not been known and understood the general public, especially in the area and members FKKM. To support capacity building FKKM members in areas respect to policies, regulations, legislation related schemes KM (*Kehutanan Masyarakat* or community forestry), FKKM publish several books, journals, magazines, and proceedings concerning the development of KM. This publication, in addition to printed and distributed in hardcopy form, are also distributed through the

website FKKM (www.fkkm.org) where members and the public who are interested in reading the issue FKKM can read and download it.

1. During 2009 to 2011, supported by Ford Foundation, FKKM developed learning center concerning the Community Forestry and Climate Change at eight locations, namely Aceh, Riau, Lampung, East Java, East Nusa Tenggara, South Sulawesi, and two locations in the District, West Kalimantan.

- In Aceh, KM Laboratory (Lab KM) was developed in Aceh Jaya, Aceh Barat, Pidie and Pidie Jaya.
- In Pelalawan, Riau, FKKM with FKKM Riau Forest Partnership in the area of promoting concession of PT RAPP in the village Segati I.
- In the West Lampung regency, Lampung, in collaboration with NGOs WATALA, FKKM promote forest Society (HKm) in Rigis Pekon Rigis Jaya Jaya II, Lampung Barat District.
- In Meru Betiri, East Java, FKKM partnered with NGOs Sustainable Conservation of Nature Indonesia (KAIL) promotes Collaborative Forest in Meru National Park Betiri on Rehabilitation region of 4,000 ha.
- South Central Timor, Nusa Tenggara Timur, the organization developed Indigenous Forest Family program
- In Bantaeng, South Sulawesi Regional FKKM, South Sulawesi with NGO Friends of Nature Bantaeng (Balang) and Regency Bantaeng promote the development of Forest Villages in Bantaeng
- In the area of the District, West Kalimantan, FKKM bersama NGOs Tapakng Olupm Macatn Sangi '(Tomas) promote Indigenous Forest Sanjan covering 237 hectares in the village of Sei Mawang, Kapuas District. In the same district, FKKM with PT Finnantara Intiga develop Forests Partnership in Hamlet Sei Kunang, Village Kambong, at the company's production concession.

2. In June 2012, supported by Ministry of Forestry, Multi Forest Program, UK Aid, and RECOFTC, we organized the 1st congress and national forum on community forest entrepreneurship in Semarang, Central Java. Around 300 small and medium local enterprises from Sumatera, Java, Kalimantan, Nusa Tenggara, Sulawesi, and Papua joined in the congress. At the end of the day, all participant of the congress agreed to join and to establish a national association; Association of Entrepreneurial Community Forestry. The association help support small-medium local enterprises to develop and strengthen their business.

3. From October 2012 to April 2013, supported by RECOFTC, we developed grassroots capacity building for REDD+ project for organizing training and capacity building programs on REDD+ and climate change and the role of community forestry for the grassroots stakeholders, including women and youth. The programmes were implemented in Bantaeng-Sulawesi Selatan, Gunungkidul-Yogyakarta, and Lombok-Nusa Tenggara Barat.

The objectives of this partnership are providing basic knowledge concerning the climate change issues and its relation to the role of key stakeholders in forest management, providing sophisticate knowledge and skill on entrepreneurship in sustainable forest management among the grassroots stakeholders within the framework of adaptation and mitigation of climate change and developing capacity on strategies and mechanisms of the collaborative and participatory planning of forest resource management within climate change framework.

ANNEX 2
TERMS OF REFERENCE OF PERSONNEL AND
CONSULTANTS AND SUB-CONTRACTS FUNDED BY ITTO

I. Terms of Reference for Project Coordinator

Position: Project coordinator; one project coordinator will be hired to run the project and to coordinate operational activities.

Duration: 24 months

Responsibility: Project coordinator will be responsible for coordinating and supervising all activities and ensuring that the overall objectives are achieved under the coordination of the steering committee and in close cooperation with the executing agency. He or she will work closely with all parties and personnel involved in the project, and be responsible for the day to day management of the project. He or she will integrate all activities of project management and be responsible of funds applied to the project and for the preparation of all project reports.

Qualification, experience and payment: holder of at least bachelor degree in forestry/ relevant field . Good understanding in English both oral and written. He or she must have good understanding of the overall project objectives, output to be achieved and activities to be carried out of the project. He or she must have sufficient experience in working on Community Forestry, Entrepreneurship, and Climate Change or REDD and have high communication and linguistical ability. Rate of payment 1,500 USD per month. The Project coordinator will be required to travel to the field. He or she will receive Daily Subsistence Allowance during duty travels.

II. Project Financial/Secretary/Administrative staffs
Project Financial/Secretary/Administrative staffs

Duration : 12 months

Responsibility: Project Financial/Secretary helps the Project Coordinator on financial and administration matters.

Qualification, experience and payment: Having experience in secretarial work and financial matters at least 4 years. Have good English in write and orally. Rate of payment USD 600 per month.

III. Consultant:

The consultant(s) will be hired in general will require the following requirements:

1. **Position: Marketing and economics :**
Marketing and economics specialist will be hired to analyze market of CF products and its economic values, Improve farmers' capacity in knowledge & access to timber market, as well access to micro financing service providers

Duration: 6 months

Responsibility: Marketing and economics specialist will be responsible for Analyse Access to the markets for several products produced by communities at least from 2 villages/farmers group,

Qualification having experience in marketing and trade of timber at least 5 years, Degree of Forestry and Marketing,
Rate of Payment : USD\$ 1000-1500/month

2. Position: Data and Statistical expert

Responsibility: Collecting Data and information especially on Economic and Social issues at 4 villages in Sanggau District

Duration : 2 months

Qualification having experience in Data and Statistical work at least 5 years, Degree of Statistics, mathematic or econometrics.

Rate of Payment : USD\$ 1000-1500/month

3. Position : Training expert :

Responsibility :

Preparing on training materials: curricula, moduls, selecting participants, Carry Out 6 times trainings and workshops to improve community's capacity on management plan and CF management technique (for instance a Five-Yearly General Plan, a yearly operation plan, processing and monitoring activities)

Duration : 4 months

Qualification, and term of payment

having experience in training activities at least 3 years, Degree in Forestry, Rate of payment : US\$ 1000- 1500/month

4. Position: Institutional Policy expert

Responsibilities:

Conducting disseminations of community's forestry - related regulations for Sanggau Local Government , Formulate one package Local Policy to support CF Activities in Sanggau , collecting info on existing regulation

Duration : 10 months

Qualification, term of payment:

Having experience in Institutional policy at least 5 years, Degree in Forestry, Forest Policy,

Rate of payment : US\$ 1000-1500/month

More Detail TORs for consultants will be set up at the time contracting them.

Reviewer Comments/Recommendations*	Amendment(s) made**	Page #***
<p><u>General Comments</u> This is a good project idea with a good link to policy and implementation, but the proposal is inconsistent across the various sections. The effort to promote community forest in Sanggau, West Kalimantan in line with the government policy to empowering community engagement is recognized. However, the proposal is not sufficiently linked with the key objective of TFLET as it focuses mostly on strengthening institutional arrangements for community forest (<i>no legality is referred</i>). It is also not clear as to whether the project will work on the existing or a new forest management plan which seems to be an essential platform before taking up any community forest activities. The proposal failed to show the fact that it has been driven by local communities - this must be addressed in the revision. In general the needs more clarity and consistency. THE ENGLISH ALSO NEEDS PROPER EDITING</p>	<p>In general, the proposal have been revised following recommendation of expert panel. The key problem have been adjusted, as well as its output and its activities. The project will work at the existing forest management plan that is in the Sanggau Community Forestry Group labelled HKm Sanggau.</p>	<p>In several pages .</p>
<p><u>Project Brief:</u> Define the communities targetted - Dayak indigenous or other local communities including from outside the area. What economic benefits will accrue from the project. Who will benefit, including gender.</p>	<p>The Project Brief have been revised as appear in page 2 and 3.</p>	<p>Page 2-3.</p>
<p><u>List of Abbreviations and Acronyms</u> <i>Provided but badly prepared, please improve.</i></p>	<p>List of abbreviation have been adjusted</p>	<p>Page 4</p>
<p><u>Map of Project Area</u> Please indicate the project area</p>	<p>The map of project area are revise as appear in page 5</p>	<p>Page 5</p>
<p><u>PROJECT CONTEXT</u> <u>Origin</u> Provide relevant information on the earlier activity derived from relevant government policies to ensure that the proposal is a community-driven one. SFTP and GIZ could also be listed here. No information on quality of the forest, in the project area, tenure, illegal logging and illegal trade in Sanggau. In 1.3.2 palm oil is mentioned - what is its impact?</p>	<p>Relevant information on earlier activity such as project cooperation namely SFDP (Social Forestry Development Project) funded by GIZ (formerly GTZ).</p>	<p>Page 6-7</p>
<p><u>Relevance</u> a. Conformity with ITTO's objectives and priorities Elaborate the project's expected contribution to the identified elements of the ITTO objectives and priorities. Specify how the project will contribute</p>	<p>The project activities have been added to correlate with ITTO's objective and ITTO Strategic Plan</p>	<p>Page 7</p>
<p>b. Conformity with the TFLET objectives No elaboration on the project's association to the output indicators and target values of the TFLET MP. Please elaborate the project's expected contribution in connection with the output indicators and target values of the TFLET MP.</p>	<p>Project Activities that contribute to the achievement of specific objective of the TFLET Program are explained in page 8</p>	<p>Page 8-9</p>

<p><u>Target Area:</u> <i>Social, cultural, economic and environmental aspects</i> Provide more economic information on community forest in the project site to justify the project activity relating to entrepreneurship skill development. More information on gender would be good. Also information on how the Dayak traditional customary law is applied. In origin, it was mentioned about non-compensation of access rights given to outsiders? Is there clarity on tenure and legality? Are individual families or communities groups involved in the various economic activities including forest which is not mentioned, and what is the proportion of income derived from the various economic activities?</p>	<p>Additional information on economic , social and gender issues are put in page 11-12</p>	<p>Page 11-12</p>
<p><u>Expected outcomes at project completion</u> Further elaborate the immediate effect of the project in connection with the sustainable management of the community forest as a model/pilot programme in West Kalimantan. The current information is far too generic and lacks tangible outcomes.</p>	<p>Immediate effect of the project and expected output at project completion inter alia explained in page 12</p>	<p>Page 12</p>
<p><u>Project Rationale and Objectives</u> Institutional set up and organizational issues Identify local institutions/partners to ensure the effective coordination of project activities which will also strengthen the sustainability of the project after its intervention. What or how is the link between the Dayak customary laws, and this local community cooperative? There is no mention of any arbitration, conflict resolution or appeal systems to be developed?</p>	<p><u>In this scheme of HKm, certain requirements should be met by the right holders, in addition of procedures which need to be followed. They include requirement for local communities to form a cooperative as a business entity. However, such business entity shall be based on local practices and customary wisdom. More detail on this explanation could be seen at page 12-13.</u></p>	<p>Page 12</p>
<p><u>Stakeholder analysis</u> Include relevant local institutions to strengthen a local-based multi-stakeholders consultation process. The table gives the different groups, but in the rest of the proposal, the HKm and traditional communities stakeholders are not clearly defined and appear to be lumped together. There is also insufficient information on UNTAN as a collaborator. How about the private sector - is it possible to identify private sector companies?</p>	<p><u>Relevant local institution that will be involved inter alia FKMM, YSBK and FGLG</u> <u>Private Company namely PT Finnantara Intiga, a Timber Estate company</u> <u>The company acting as a partner to the community in marketing the community timber products.</u> <u>Other private sectors could participate in</u> Preparing scheme of funding assistance such as revolving fund scheme for community forest <u>Or as a partner of the community's group</u> <u>UNTAN is not a collaborating agency. UNTAN is only a partner that will give</u> Contribution in reviewing and analyzing some matters related to community forest policy, and regulation.</p>	<p>Page 13</p>

<p><u>Problem analysis</u> Refine the key problem to fully reflect the proposed project intervention which is to strengthen good governance of community forest management in Sanggau, West Kalimantan as a model project. The focus appears to be on local communities or farmers, but there is limited mention of tembawang or community forest. The proposal may benefit from a better differentiation of the main target stakeholders.</p>	<p>The key problem have been refined and come to the main problem is Weak capacity of Local Community to sustainably manage their community forestry in Sanggau and this is caused by three factors inter alia :</p> <ul style="list-style-type: none"> - Weak local community institution - Limited Access to economic resources - Lack of Local Government support on community forestry development <p>In detail this change could be seen at page 16 to 21</p>	<p>Page 16-18</p>
<p><u>Problem tree</u> Further identify the sub-cause of the second cause (In-sufficient Support to HKM Institution) including weak policy and legal framework aspects. It is unclear how the emissions box is useful in this project to link to sustainably manage community forest unless there is a financial aspect?</p>	<p>Problem tree have been revised as appear in page 19</p>	
<p><u>Logical framework matrix</u> Further define the statements of the development and specific objectives; Provide timeline in the indicators to ensure the achievements of project objectives and outputs during and after the project duration. Numbers targetted need some reconciliation between indicators and outputs and in the various sections and tables. Not clear where REDD activities comes in - is it about alternative financing for local communities? This is not explained in the previous sections. Means of verification may need more than just list of attendance to ensure the training are useful - some form of monitoring may be needed. Specify if output is for farmers or communities, or indigenous peoples if applicable. There is also no mention about markets and products in the indicators which may require different mechanisms for access, training and financing?</p>	<p>Logical framework matrix have been revised.</p>	<p>Page 21-24</p>
<p><u>Objectives</u> a. Development objective and impact indicators Refine the statement of the development objective; Provide timeline in the impact indicator.</p>	<p>Development objective's statement have been revised and added timeline in the impact indicator.</p>	<p>Page 25-26</p>
<p>b. Specific objective and outcome indicators Refine the statement of the specific objective; Provide timeline in the outcome indicator.</p>	<p>Specific objective's statement have been revised and be put the timeline</p>	<p>Page 25-26</p>
<p><u>Outputs and activities</u> Outputs: Clarify whether the project work will be based on the existing forest management plan.</p>	<p>Output and activities of the project based on the existing forest management plan</p>	<p>Page 25-26</p>
<p><u>Activities</u> Justify the inclusion of the proposed REDD+ feasibility study with more information on West Kalimantan Province's REDD+ strategy or policy if available.</p>	<p>REDD+ feasibility study is being out from the project activities since the activities will focus on the policy and regulation formulation.</p>	

<p><u>Work plan</u> Refine the implementation of Project Activity 1.3 and 2.1 Check headings and activities for consistency between different sections. Can 2.1 be done within 2 months including report writing? Activities 3.2.1 and 3.2.2 should be earlier and not later as local government need this training before they can follow up on various other activities. 3.4 forum should not be only for 3 months but for long term, because learning, exchange of experience and problem solving is continuous - this could be part of sustainability.</p>	<p>All activities of project have been adjusted including its time table that appear in the workplan. Some previous activities is delete and changed.</p>	<p>Page 27-28</p>
<p><u>ITTO Budget by Component</u> Scale down the ITTO budget particularly the project personnel while increasing the counterpart contribution.</p>	<p>The budget has been scaled down and counterpart contribution has been increased.</p>	<p>Page 30-38</p>
<p><u>Assumptions and risks</u> The current risk assessment is weak. Provide a comprehensive risk assessment in line with the risks identified in the logical framework matrix.</p>	<p>Assumption and risk have been revised</p>	<p>Page 45</p>
<p><u>Sustainability</u> Improve the sustainability assessment by clearly indicating any local institutional arrangements to follow-up the project intervention and to ensure sustainability</p>	<p>Sustainability of the project have been explained in page 45-46</p>	<p>Page 45-46</p>
<p><u>Executing Agency and Partners</u> Justify the engagement of the 'Center of Climate Change Research Development and Policy' as the Executing Agency.</p>	<p>Center of Climate Change Research and Policy Development is the Executing Agency for Project Implementation. Its Justification according to its capacity is explained in page 46</p>	<p>Page 46</p>
<p><u>Project Management Team</u> Strengthen the engagement of local government agencies to ensure the effective coordination based on its local ownership and the sustainability.</p>	<p>Local government agencies has been involved as project steering committee member and has been given their specific roles</p>	<p>Page 47</p>
<p><u>Stakeholder involvement mechanisms</u> Improve the coordination mechanism among key local stakeholders. Such mechanism is currently missing</p>	<p>Coordination mechanism have been explained in page 49</p>	<p>Page 49</p>
<p><u>Dissemination of project results</u> Elaboration on each of the dissemination points mentioned would be good especially in relation to other stakeholders in other areas as a learning process.</p>	<p>Dissemination of project results have been explained in page 50</p>	<p>Page 50</p>
<p><u>Mainstreaming project learning</u> No elaboration on who and how to mainstream the learning</p>	<p>Mainstreaming project learning is explained in page 50</p>	<p>Page 50</p>
<p><u>ToRs of personnel, consultants and sub-contracts funded by ITTO</u> Incomplete. Include TORs</p>	<p>TORs of personnels, consultants and sub contracts funded by ITTO have been revised in page 55</p>	<p>Page 55</p>

ANNEX 4 Responses to Reviewer comments/recommendations Rev.2

Reviewer Comments/Recommendations*	Amendment(s) made**	Page #***
<p>General Comment: <i>Acknowledged the efforts made in addressing the previous recommendations. However, some aspects are still required further clarification and elaboration, particularly as regards the expected contribution of the project to the specific objective of the TEFLET and the engagement of the Center for Climate Change and Policy Reserach as Executing Agency.</i></p>	<p><i>All expert panel's reccommendation and comments have been accomodated and revised as appeared in the following pages.</i></p>	
<p>Origin: Elaborate on the existing local initiatives to fully support the proposed work in Sanggau, Kalimantan</p>	<p>The existing local initiatives inter alia practices <i>tembawang</i> as a landuse system which acknowledge communal ownership over the land and natural resources and distinguish the landuses based on different kinds functions for community. Rubber garden, fruit garden, land for shifting cultivation and protected garden are among the distinction of landuses which are enforced by customary law of adat rules. System of forest management by local people in Sanggau is a combination of forest, former farm, agro-forestry and rice fields, This local practices has proved to be sustaining natural resources. The project will encourage landscape management that includes forest, former farm, agro-forestry and agriculture as an integrative model that support the well-being and sustainability</p>	<p>Pages 1-2</p>
<p>Conformity with the TFLET objectives Further elaborate the expected <u>contribution of the project</u> in connection with the identified specific objectives of the TFLET programme focusing on law enforcement and governance and addressing illegal logging and associated trade</p>	<p>The proposal is consistent with the program objectives such as: B. Strengthening forest law compliance and governance. Project Activities will contribute to the achievement of specific objective of the TFLET Program as shown in Activitiy 1.1. : Improved community knowledge on policy regulation of CF development Activity 1.3. Strengthen technical capacity of community regarding community forestry management. Activity 2.1 : Provide and improve data and Information on Economic resources of CF groups Activity 3..3. : Formulate one package local policy to support CF activities in Sanggau</p> <p>All of the project activities and sub activities that written in underlined and bold type in page 9 to 10 is to show how far project output and activities are support and connect to the TFLET' specific objective focusing on law enforcement and governance</p>	<p>Page 4</p>

Reviewer Comments/Recommendations*	Amendment(s) made**	Page #***
<p>Geographic Location</p> <p>Provide more information on why Sanggau has been selected as the project site <u>in connection with forest law</u></p>	<p>Sanggau is selected due to its location at the border with Malaysia which often been reported with high risks and cases of illegal logging and timber smuggling. The District of Sanggau is surrounded by protected areas, they include the National Park of Danau Sentarum, the National Park of Bukit Baka-Bukit Raya and the National Park of Betung Kerihung as among the largest conservation areas in Indonesia. Sanggau is also the place where the largest area of HKm is allocated by the Ministry of Forestry.</p>	<p>Page 6</p>
<p>Social, cultural, environmental and economic aspects:</p> <p>Further elaborate the environmental aspect of the project site.....</p>	<p>Further elaboration on the environmental aspects of the project site have been explained in page 7 the last paragraph</p> <p>..</p>	<p>Pages 6-7</p>
<p>Expected outcomes at project completion:</p> <p>In the socio economic section, the current mix of rubber, padi and forest will need to be <u>re-balanced</u> if the priority is forestry. The aspirations of the communities may not be for forestry first, but agriculture and rubber. It is not clear how this will be taken up in the project.</p> <p>Further elaboration of the expected outcomes of the project in connection with the achievement of the specific objectives of the TFLET is requested.</p>	<p>System of forest management by local people in Sanggau is a combination of forest, former farm, agro-forestry and rice fields. The project will encourage landscape management that includes forest, former farm, agro-forestry and agriculture as an integrative model that support the well-being and sustainability.</p> <p>Those information above have been added in the page 7.</p> <p>The expected outcome of the project inter alia improved Forest Law Enforcement and Governance and increased quality and quantity of forest being managed by community to achieve SFM.</p> <p>Improved Forest law enforcement and Governance will be achieved through improved national policy and legal frameworks, strengthened enforcement and other institutions, as well as improved data etc.</p> <p>For that reason, this proposed project will need to formulate a draft of local decree that will be implemented in accordance with the conditions and potential in the field. The regulation is needed as policy management of forests in the region</p>	<p>Page 7</p> <p>Page 8</p>
<p>Institutional set up and organizational structure:</p> <p>Further elaboration of the expected role of key partners in project implementation</p>	<p>Role of key partners have been elaborated and explained in pages 9-10</p>	<p>Page 9-10</p>
<p>Development objective and impact indicators:</p> <p>Objective in logframe more measurable than in text. Text not consistent in different sections for objectives, etc. - edit & revise</p>	<p>Indicators in the Description and Project Interventions are same as in the Log frame. See pages 16-18</p>	<p>Page 19</p>

Reviewer Comments/Recommendations*	Amendment(s) made**	Page #***
<p>some Indicators can be more measurable and specific. E.g. improve community knowledge, giving information does not mean improve knowledge. There should be some form of baseline to measure against.</p>	<ul style="list-style-type: none"> Improved awareness of community on policy regulation of CF through several dissemination program. The impact will be measured after project completed (measured on the level of illegal activities, complying to the regulation as compared with before the project's implemented Measuring baseline will be conducted in earlier activities. 	<p>Pages 16-18</p>
<p>Dev.Project Intervention Output: Output 1, what is a local community institution? The activities does not mention about an institution as such. Refine the description of Output 2. It might be related to "Improved social and economic information and data for sustainable development of community forestry in Sanggau"</p>	<p>Output 1. Developed local community institution in term of forest managed by local community (forest farmer groups); Output 2. Revised as ... "Improved social and economic information and data for sustainable development of community forestry in Sanggau"..</p>	<p>Page 20</p>
<p>Activities: Numbering of project activities should be presented in a consistent manner</p>	<p><u>Numbering of project activities have been revised and See page 20:</u></p> <p>2.3.3 <u>Provide 1 (one) information package on how community could access to sources of funding/financing through studies.</u></p> <p>2.3.4 <u>Carry out two gathering among business entities/practitioners face to face with the funding/financial resources.</u></p>	<p>Page 20</p>
<p>Implementation approaches and methods: Approaches and methods could be grouped to different stakeholders, functions, delivery, etc</p>	<p>Implementation approaches and methods – have been revised and formulated into matriks</p> <p>See page 21</p>	<p>Page 21</p>
<p>Work plan: Review the extension of the work plan from a 2-year to a 3-year plan given the scope of the project work involving a multi-stakeholders consultation without increasing the project budget.</p>	<p>Project duration will stick to 24 months or two –year, since the extension will increase the operational budget. Concerning scope of the project work involving a multi-stakeholders consultation, the project team has already developed an initial network both in the central and provincial level to work together, so we do not need time extension.</p>	

Reviewer Comments/Recommendations*	Amendment(s) made**	Page #***
<p>ITTO Budget by component: Justify the provision of training (US\$63,750) under budget item - miscellaneous</p>	<p>Provision of training (US\$ 63,750) that put under miscellaneous budget item is a compilation budget of training activities conducted in activities 1.2.2: training entrepreneurship, activities 1.3.2. Training 6 times to improve community's capacity on Management Plan of CF, and activity 3.2. Training and workshop to strengthen Local Government. See master budget pages 33-34.</p>	<p>Pages 35-36</p>
<p>Executing agency and partners: The engagement of the Center for Climate Change and Policy Research as Executing Agency should be further justified to ensure the <u>effective implementation</u> of the project.</p>	<p>Puspajak is supported by 40 professional researchers with multidisciplinary background and Phd/MSc levels of education, among others are sociologists, natural resources economists, forest management, statisticians, and policy analysts. Locations of the research covers the whole country, among the 58 of research stations so-called KHDTK, one is located at the neighbourhood of Sanggau. In conducting the research, Puspajak gets support from global institutions among others with the World Bank, ACIAR of Australia, ITTO, and it also collaborates with national and local NGOs beside collaborating with other research institutions. At the field, Puspajak makes closed contact with local government, community, academici and also private entities and it involve actively in policy-making processes.</p>	<p>Page 40</p>
<p>Reporting, review, monitoring and evaluation: Please provide more details.</p>	<p>Next Project Progres report for the 2nd and 3rd will be submitted every six-month</p>	<p>Page 42</p>
<p>Dissemination Project Result: Provide more information on the proposed national workshop (i.e. traget audience) although it is in draft to ensure wider dissemination of project results</p>	<p>Target audience include policy makers at national, provincial and local levels, community/forest farmers group, private companies, NGOs with attendance 20-30 persons for every meeting. These informations have been added in page 53.</p>	<p>Page 43</p>
<p>Mainstreaming Project Learning: Further elaborate on how to mainstream project outcomes into local/national government forest policy development</p>	<p>Project Outcome will be communicated to the policy makers and be followed up (inter alia through series of policy dialogues) to be a national policy that being adopted in local level and be as guideline for field implementation.</p>	<p>Page 43</p>
<p>TOR Consultant: Some consultants still missing</p>	<p>Additonal TOR for consultants had been added. See pages 47-48</p>	<p>Pages 47-48</p>