



Community-focused Blue Carbon

Lessons learnt in Madagascar....so far!

blue ventures
beyond conservation

**International Conference on Sustainable Mangrove Ecosystems
18-21 April 2017, Bali, Indonesia**

Blue Ventures' Blue Forests Project

empowering communities to sustainably manage their mangroves



Forests **2014**, *5*, 177-205; doi:10.3390/f5010177

OPEN ACCESS

forests

ISSN 1999-4907

www.mdpi.com/journal/forests

Article

Ecological Variability and Carbon Stock Estimates of Mangrove Ecosystems in Northwestern Madagascar

Trevor G. Jones ^{1,2,*}, Harifidy Rakoto Ratsimba ³, Lalao Ravaoarinorotsihoarana ¹, Garth Cripps ¹ and Adia Bey ¹

J. Mar. Sci. Eng. **2015**, *3*, 793-820; doi:10.3390/jmse3030793

OPEN ACCESS

Journal of
*Marine Science
and Engineering*

ISSN 2077-1312

www.mdpi.com/journal/jmse

Article

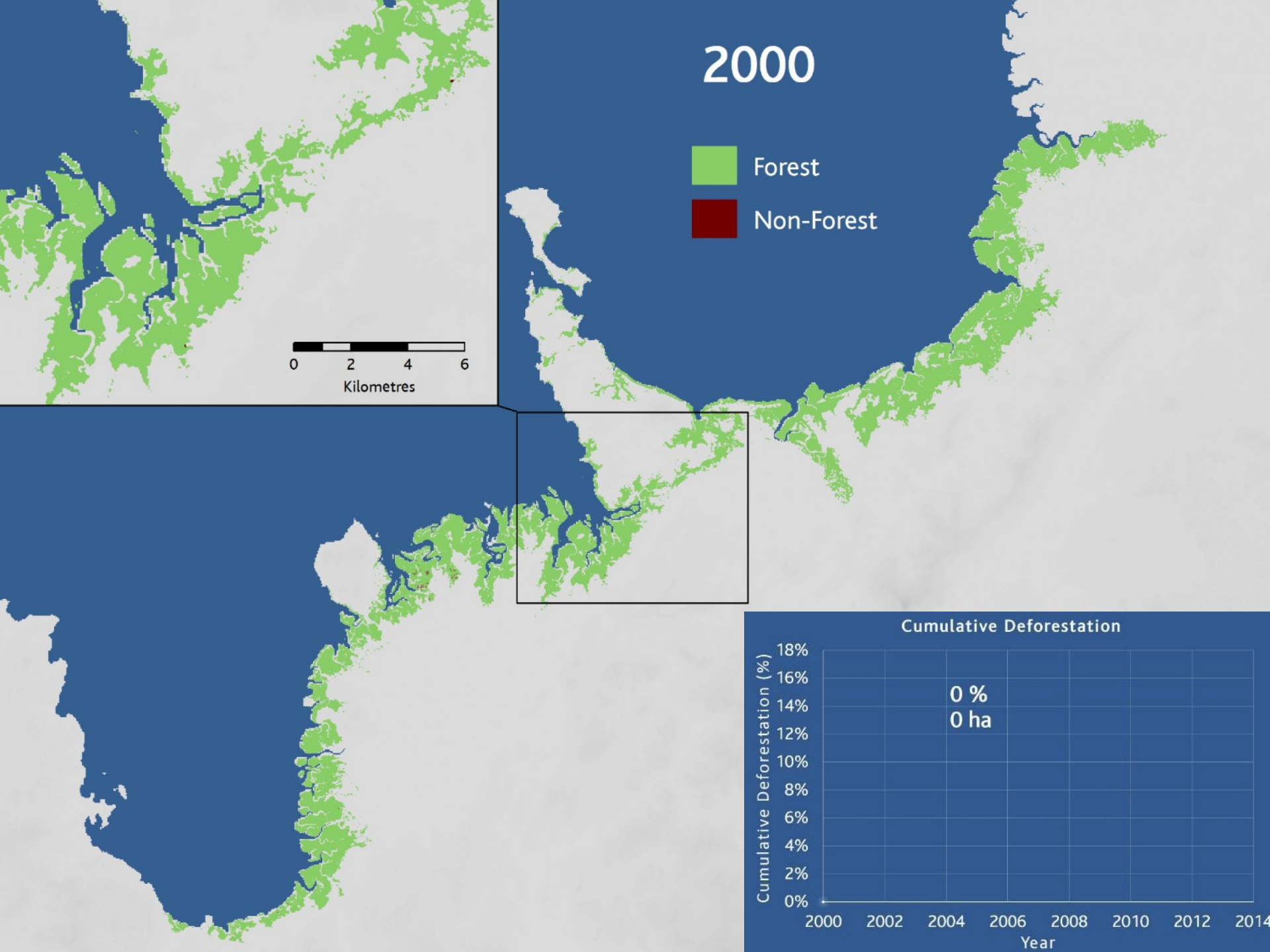
The Dynamics, Ecological Variability and Estimated Carbon Stocks of Mangroves in Mahajamba Bay, Madagascar

Trevor G. Jones ^{1,2,*}, Harifidy Rakoto Ratsimba ³, Lalao Ravaoarinorotsihoarana ¹, Leah Glass ¹, Lisa Benson ¹, Marianne Teoh ⁴, Aude Carro ¹, Garth Cripps ¹, Chandra Giri ⁵, Samir Gandhi ¹, Zo Andriamahenina ¹, Rado Rakotomanana ¹ and Pierre-Francois Roy ⁶

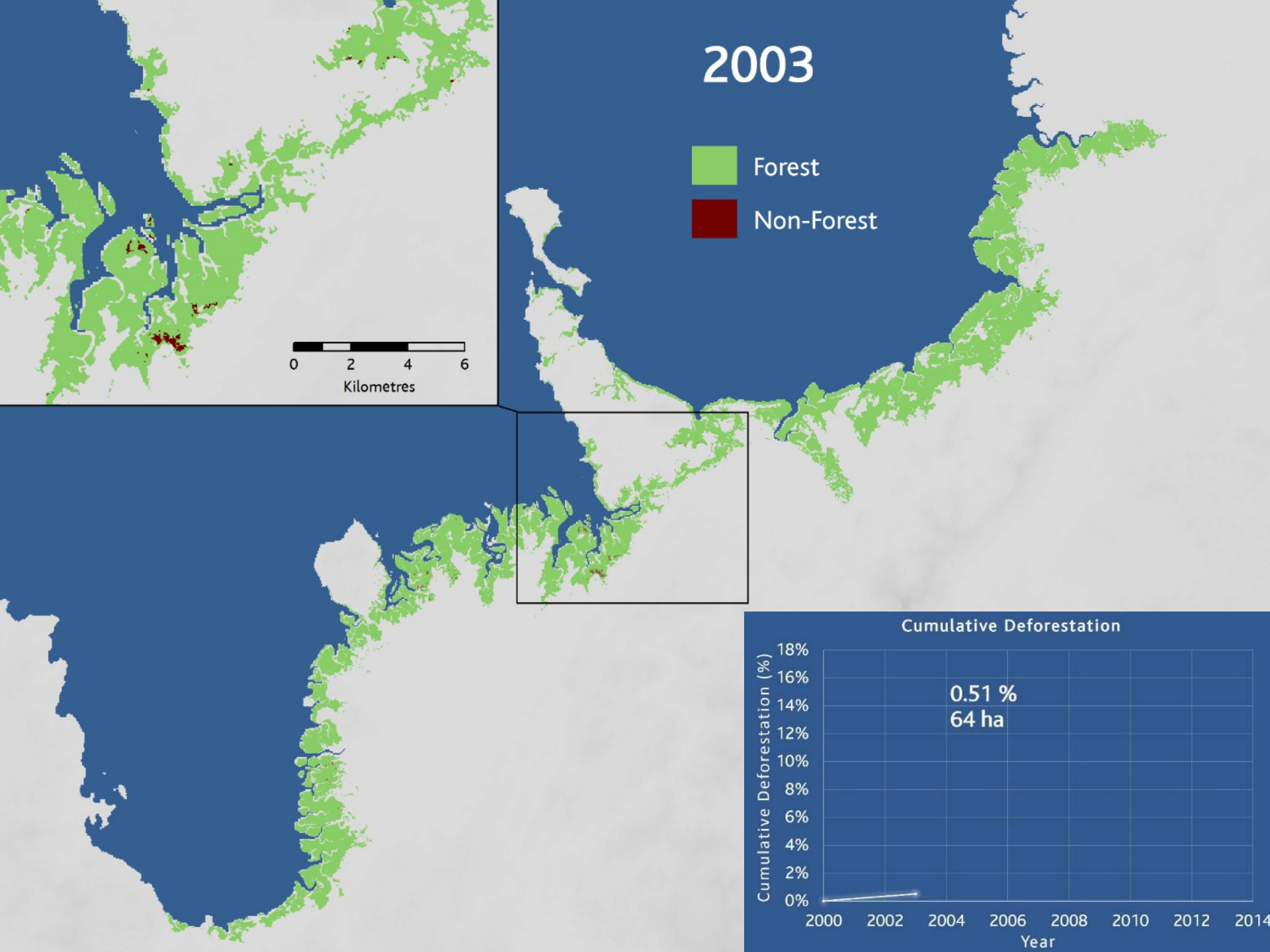
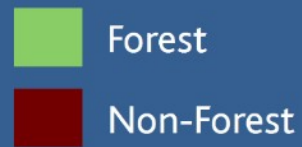
Office

ent

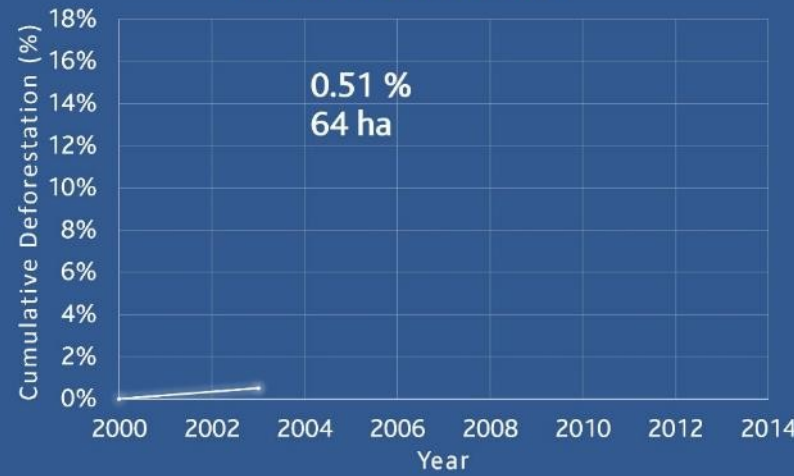
res
ervation

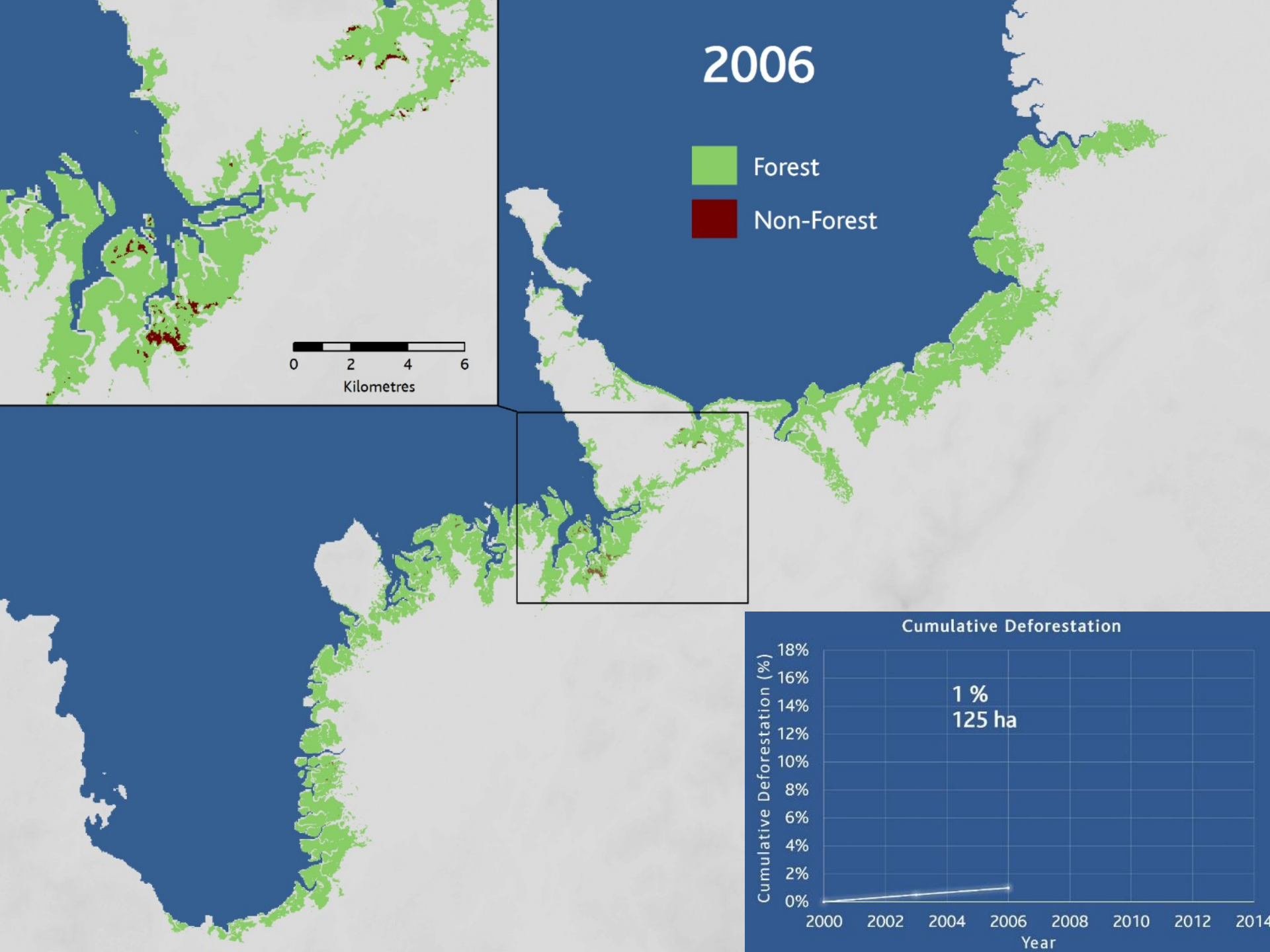


2003



Cumulative Deforestation



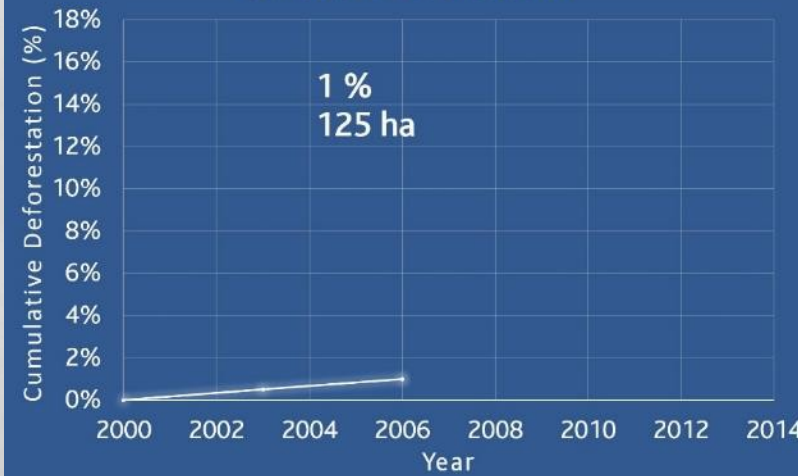


2006

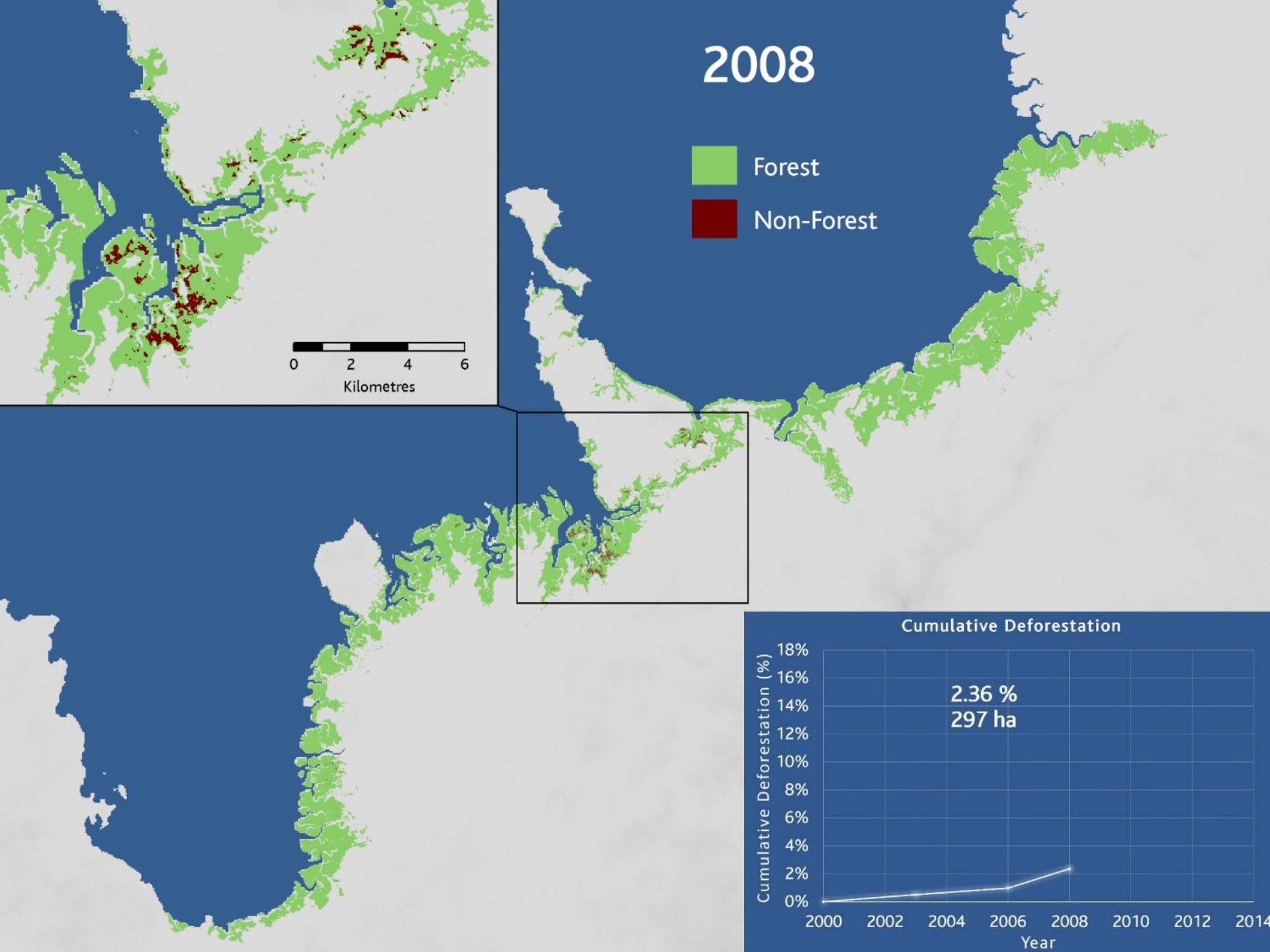
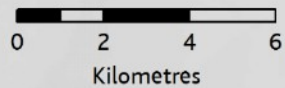
- Forest
- Non-Forest

0 2 4 6
Kilometres

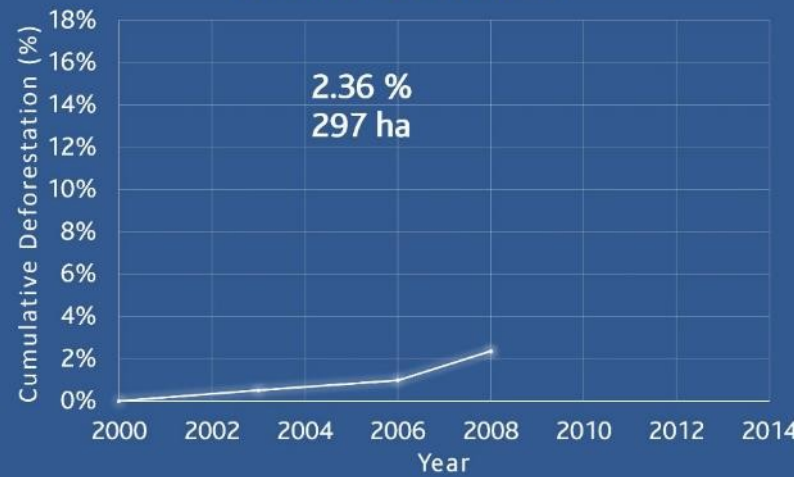
Cumulative Deforestation

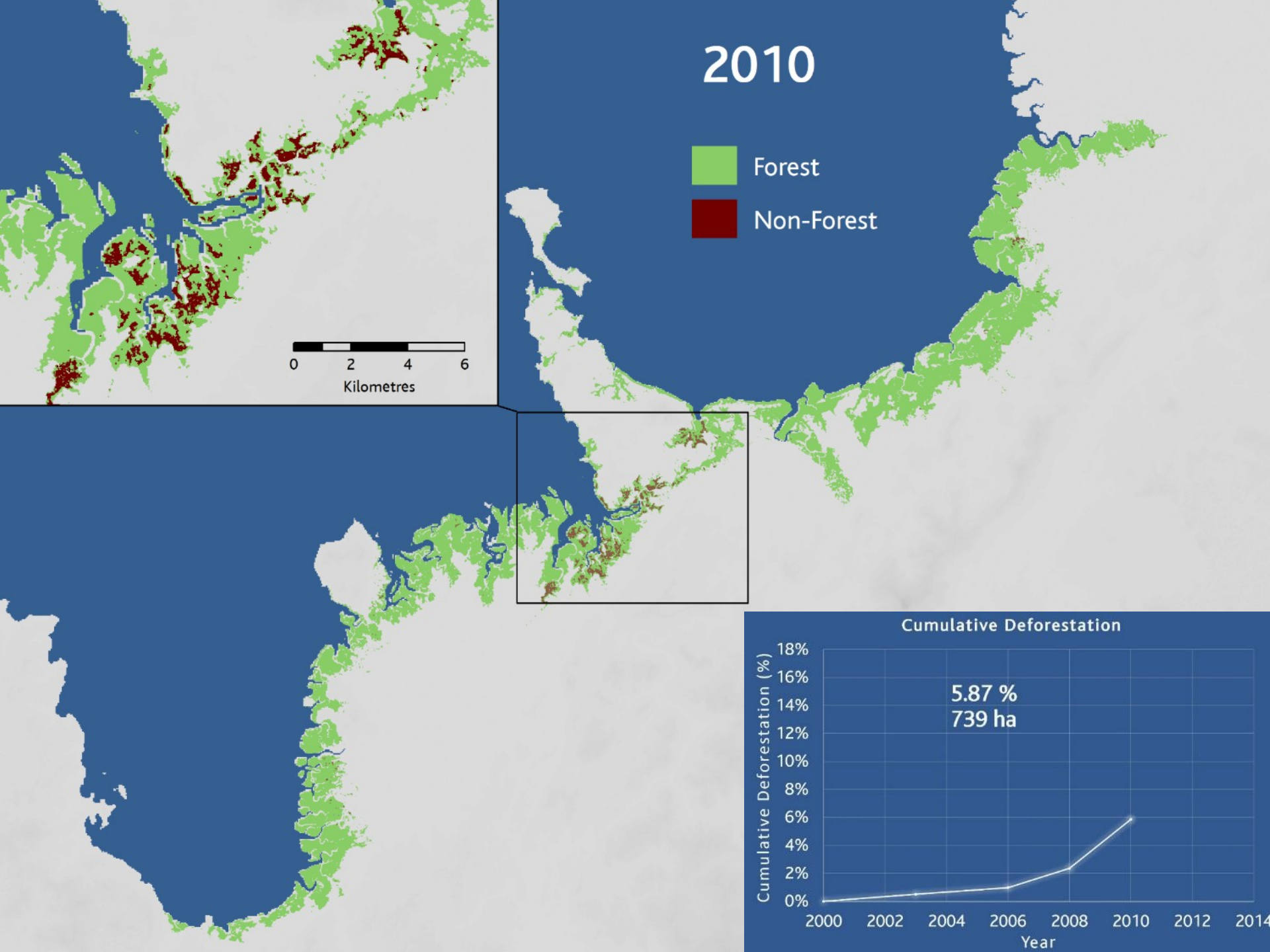


2008

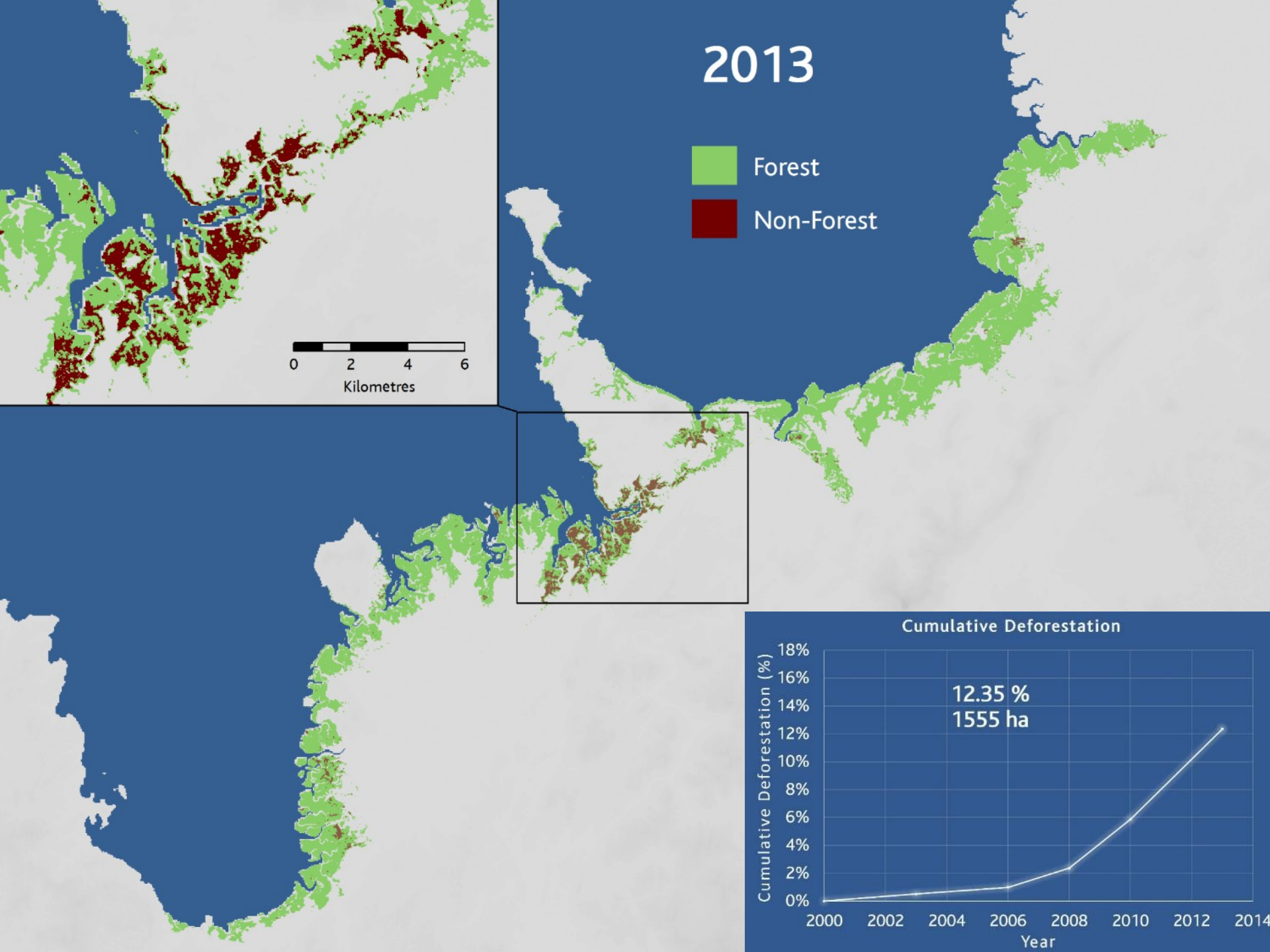
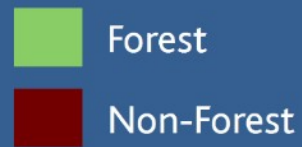


Cumulative Deforestation

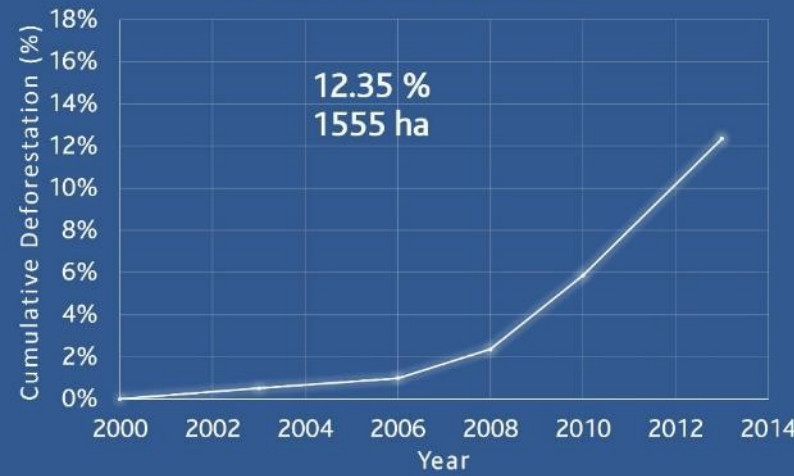




2013



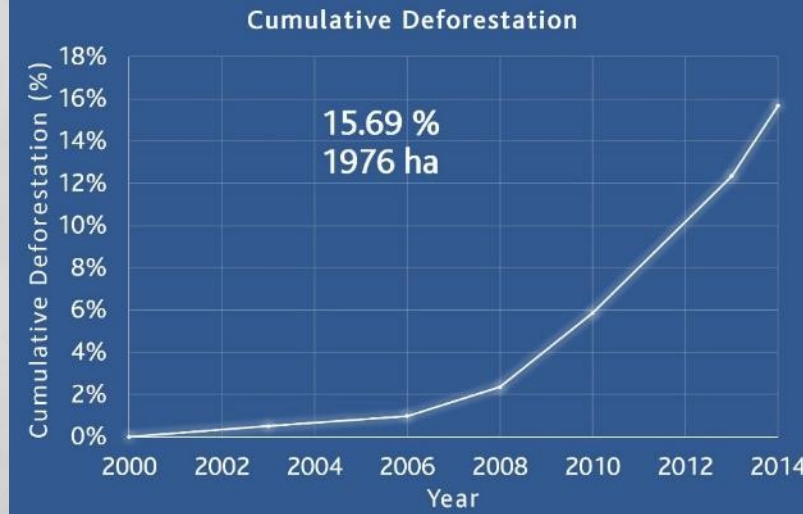
Cumulative Deforestation



2014



Current deforestation rate = 3.74%
-> 417 ha lost between 2013-2014





Community Buy-In

Critical to project success

Participatory design - ownership



Community Buy- In

Critical to project success

Participatory design - ownership

Theory of Change approach



Understanding



FPIC: Free, Prior and ***Informed***
Consent

Why?

Challenges

Community Buy- In

Finances:

- How much?
- Distribution?



Community Buy- In

Finances:

- How much?
- Distribution?

Continued buy-in

- Shorter term incentives



Project Modelling and Forecasting

Benefit sharing scenario

Opportunity cost



Project Modelling and



■ Project opportunity cost - INCLUDING carbon revenue

■ Project opportunity cost - EXCLUDING carbon revenue

■ With project - INCLUDING carbon revenue

■ With project - EXCLUDING carbon revenue

■ Without project

Project Modelling and Forecasting

An aerial photograph of a coastal wetland area. The image shows a mix of green vegetation, blue water, and sandy areas. The water is shallow and clear, revealing the seabed. The vegetation is dense and green, covering a large portion of the land. The sky is a clear, light blue. The overall scene is a natural, coastal environment.

Benefit sharing scenario

Opportunity cost

Challenges of dealing with a volatile/depressed market

Be conservative/realistic

Project Design

Project size

Means of conservation/project activities

Leakage:

- How much and what can you do to prevent it
- What's causing the deforestation?

Project Design

A close-up photograph showing a person's hands holding a large, dark brown crab on a surface of cracked, dry earth. The person is wearing a red garment. The background is blurred, showing more of the cracked earth and some dry leaves. The overall scene suggests a rural or agricultural setting, possibly related to fishing or aquaculture.

Alternative livelihoods

Sustainable fisheries
management integration

Summary:

Community buy-in, ownership,
understanding

Project modelling and
forecasting

Project design

- Leakage
- Alternatives

Misaotra!

