



PERÚ

Ministerio
del Ambiente

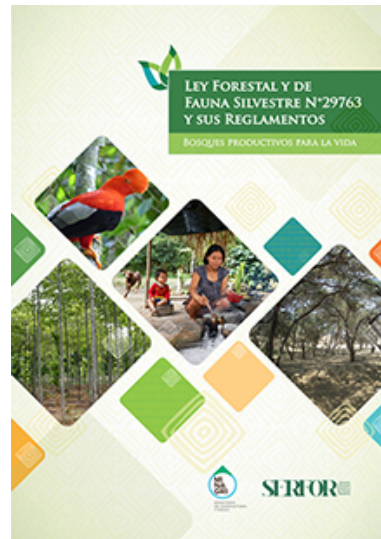
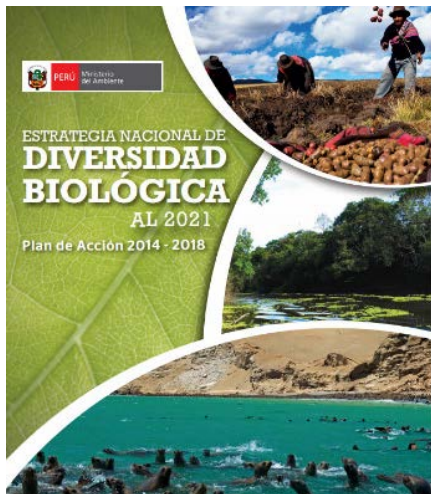
Viceministerio de Desarrollo Estratégico de los Recursos Naturales
Dirección General de Diversidad Biológica

ITTO – CITES Program contributions in Perú

Fabiola Nuñez Neyra
CITES Specialist
Ministry of Environment

2016



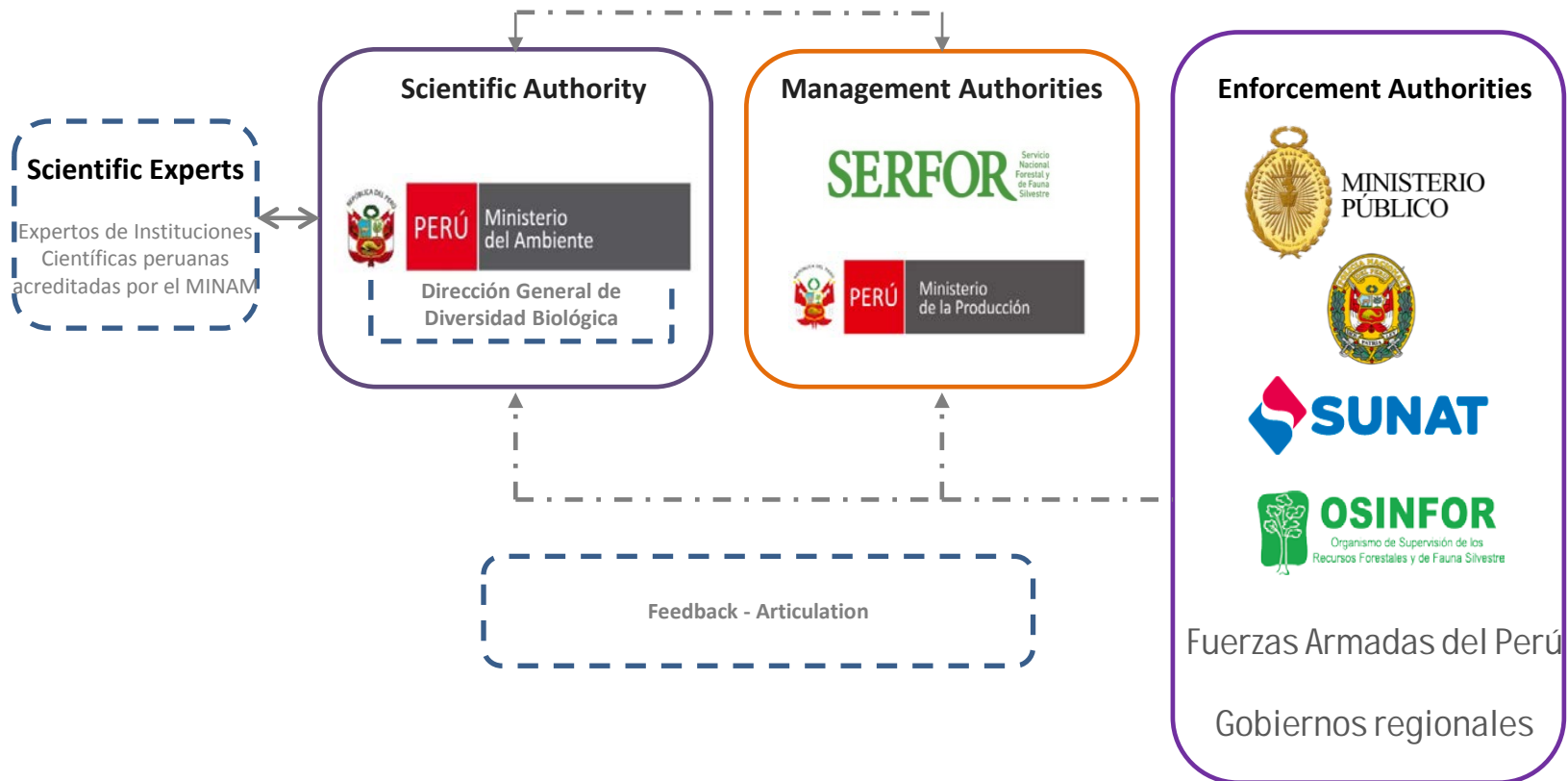


National and international policies consider:
"Conserving species through
management and sustainable use "



CITES PERÚ

Reglamento: D. S. N° 030-2005-AG / D. S. N° 001-2008-MINAM



“Results from ITTO-CITES projects bring important inputs to the decision making by the CITES Authorities, MINAM, SERFOR and OSINFOR”.



ITTO-CITES PROJECTS

1) EVALUATION OF COMMERCIAL STOCKS AND STRATEGY FOR THE SUSTAINABLE MANAGEMENT OF BIGLEAF MAHOGANY (*SWIETENIA MACROPHYLLA*) IN PERU (ITTO 2006-2007).

Budget: ITTO (USD 351,000) – Peru (USD 176,978)

2) EVALUATION OF COMMERCIAL STOCKS AND STRATEGY FOR THE SUSTAINABLE MANAGEMENT OF CEDAR (*CEDRELA ODORATA*) (ITTO 2008).

Budget: ITTO (USD 374,851) – Peru (USD 176,978)

Goal: “Evaluation of the status of big-leaf mahogany and cedar populations and determine their status in Peru, to develop a strategy to support and recovery its populations and thus guarantee its survival”



ITTO-CITES PROJECTS

3) DESIGN, VALIDATION AND ADJUSTMENT OF METHODOLOGY FOR ONGOING MONITORING AND EVALUATION OF BIGLEAF MAHOGANY AND CEDAR SAMPLE PLOTS IN PERU (ITTO-CITES, 2009-2010)

Budget: ITTO (USD 129,729) – Peru (USD 90,993)

Goal: “Consolidate the work with ITTO projects and generate an ongoing monitoring system for mahogany and cedar and the activities carried out by forest concessions, in particular, the use of silvicultural treatments as a way to ensure the survival of these species”

4) CONFIRMATORY ASSESSMENT OF FOREST INVENTORIES FOR CEDAR AND BIGLEAF MAHOGANY (ITTO-CITES, 2013-2014)

Budget: ITTO (USD 133,550) – Peru (USD 111,700)

Goal: “Design a method (technical guidelines) supported by technical and statistically to confirmation the presence of big-leaf and cedar species in forestry census, with the purpose of providing an effective tool of monitoring”



ITTO-CITES PROJECTS

5) ASSESSMENT IN REGENERATION OF NATURAL BIG-LEAF MAHOGANY AND CEDAR POPULATIONS IN PERU ITTO-CITES Programme (2012-2013)

Budget: ITTO(USD 128,290) – Peru (USD 71,500)

Goal: “Design a common approach to assessing natural regeneration of big-leaf mahogany and cedar populations”

6) MANAGEMENT OF MAHOGANY (*SWIETENIA MACROPHYLLA* KING.) AND CEDAR (*CEDRELA* SPP.) SEED STANDS FOR THE CONSERVATION IN A FOREST CONCESSION IN TAHUAMANU, MADRE DE DIOS – ITTO-CITES Programme of forestry species and market transparency (2014-2016)

Budget: ITTO (USD 199,436) – Peru (USD 250,000)

Goal: “Design a method to study behaviour, phenology and natural regeneration of big-leaf mahogany and cedar in a seed stands located in Tahuamanu, Madre de Dios”.

MAIN ACTIVITIES

- Data base and information analysis
- Estimate big-leaf mahogany populations.
- Assessment of characterization plots.
- Identify big-leaf mahogany associated species.
- Dasometric study (form and volume) for big-leaf mahogany.
- Assessment of cedar and bigleaf mahogany seedlings and natural regeneration.
- Design method to confirm forest inventories for cedar and bigleaf mahogany.
- Assessment of dispersal seeds.





MAIN PRODUCTS

1. Database (Mahogany and Cedar)

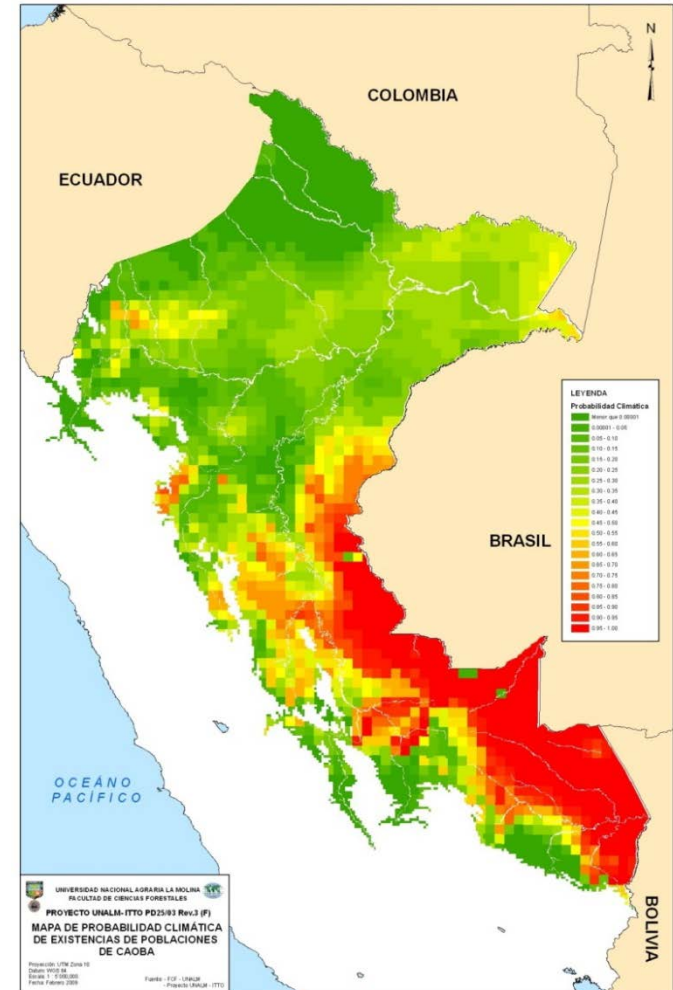
- ✓ Forestry census (almost 1 million records)
- ✓ Forest concession
- ✓ POAS (Annual Operating Plans)
- ✓ Type of types of forests
- ✓ Characterization plots
- ✓ Seedlings locations
- ✓ Others

3. Big-leaf mahogany characterization

Species associated with the big-leaf mahogany and sites where grows (IVI, etc).



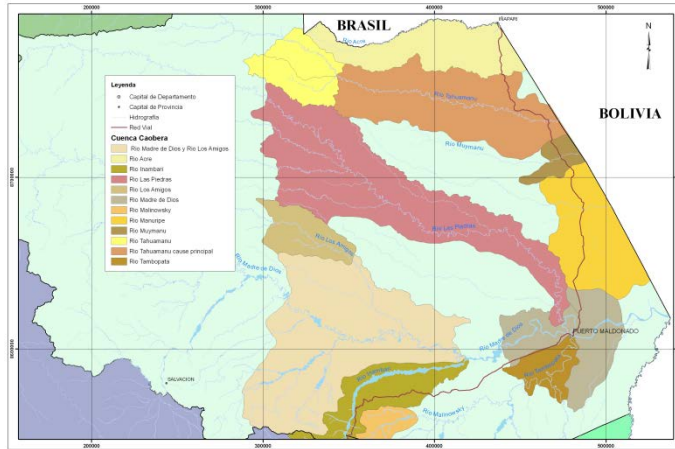
2. Map of potential distribution of Big-leaf mahogany



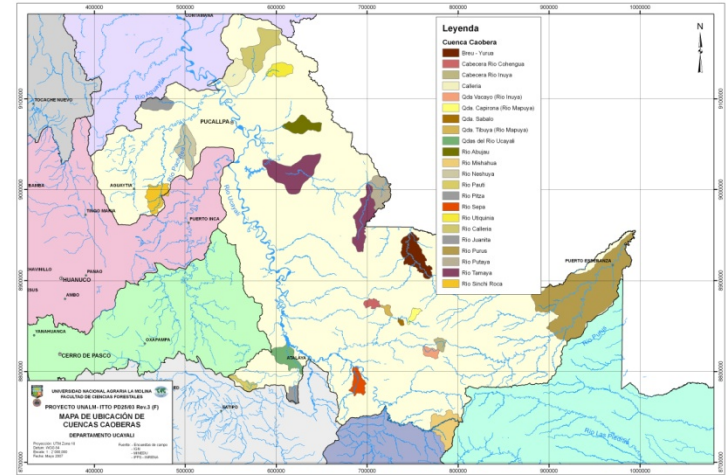


4. Identification of Big-leaf mahogany basins

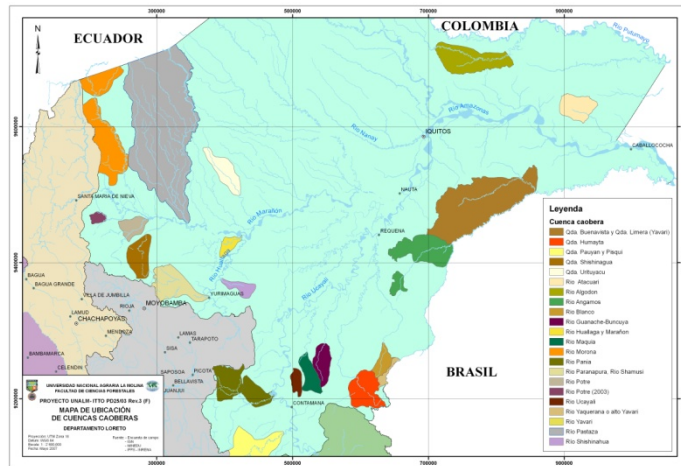
Madre de Dios



Ucayali



Loreto



San Martín

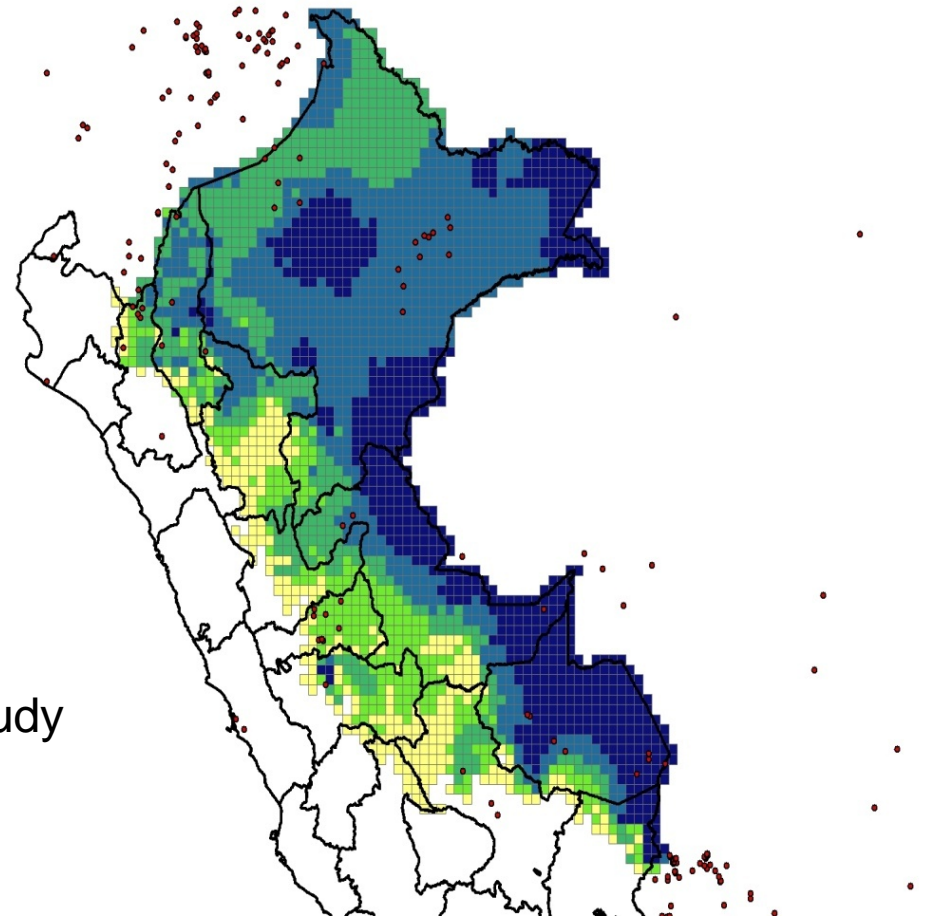




5. Distribution, concentration areas and impact levels of cedar, 1/250000 scale

Probabilidad de ocurrencia de Cedro en el Perú

0.0519	0.0992	
0.0992	0.1938	
0.1938	0.2883	
0.2883	0.4775	
0.4775	0.6193	
0.6193	0.7139	
0.7139	0.8085	
0.8085	0.903	
> 0.903		



Datos del Jardín Botánico de Missouri

6. Tree dimensions data : form factor study for Mahogany and Cedar.



7. Identification of the potencial pollinator of big-leaf mahogany (Fam. Vespidae)



8. Methodologies to assess seedlings and natural regeneration

9. Technical documents about confirmation of forestry census

10. Methodologies to assess behaviour and phenology of the big-leaf and cedar seed stands natural regeneration in Tahuamanu



11. Publications

- Manual evaluation of seedlings and natural regeneration for big-leaf and cedar species.
- Evaluation of recovery natural populations of mahogany and cedar species in Peru.
- Techniques to confirm the validity of commercial census of mahogany and cedar (In progress).
- Manual for phenology monitoring and natural regeneration of mahogany and cedar (In progress).
- Reproductive strategies of mahogany and cedar seedlings (In progress).





PROJECTS helps to make NDF

ITTO-CITES projects have allowed to estimate the populations size of mahogany to establish the number of individuals that could be harvest annually, as well as determine relevants recommendations to support sostenible management and to promote the specie conservation.



Inventario de Cedros
Manejo de Rodal Semillero en la provincia de Tahuamanu





PROJECTS contribute to the conservation and sustainable management

Knowledge of species associated to endangered species make possible to identify the level of habitat conservation and bring recommendations to promote the recovery of the species.

These projects support the implementation of forest management plans, knowing the role played by seedlings and the importance to improve silvicultural practice to establish the species in the forest.

Count for methodologies applied in the field as important contribution to promote the researches and assesments.

Methods to confirm the forest inventories.





Thank you!!

Further information: ilombardi@lanolina.edu.pe